

**NOTES:**

1. THIS PLAN SHEET IS NOT TO SCALE AND SHALL ONLY BE USED AS A GUIDE FOR THE PLACEMENT OF THE HARDWARE LISTED. THE CONTRACTOR SHALL CONFIRM ALL LOCATIONS IN THE FIELD WITH THE ENGINEER PRIOR TO INSTALLATION. LOCATIONS MAY BE REVISED AS A RESULT OF THE SITE SURVEY.
2. THE CONTRACTOR SHALL VERIFY IN THE FIELD THAT THERE IS ADEQUATE SPACE IN THE CONDUIT FOR DETECTION CABLE AND EQUIPMENT. IF ADDITIONAL CONDUIT INSTALLATION IS REQUIRED, ALL WORK ASSOCIATED FOR INSTALLATION WILL BE INCIDENTAL TO ITEM 900.620 - SPECIAL PROVISION (VEHICLE PREEMPTION/VIDEO VEHICLE DETECTION SYSTEM)(US 7 @ COLD RIVER RD.). MATERIALS AND CONSTRUCTION TO BE IN ACCORDANCE WITH SECTION 678.
3. FOR INFORMATION REGARDING THE INSTALLATION OF THE ACCESSIBLE PEDESTRIAN PUSH BUTTON ASSEMBLIES (ORIENTATION, HEIGHT, ETC.), SEE SECTION 4E08-PEDESTRIAN DETECTORS IN THE 2009 EDITION OF THE MUTCD.
4. THE ACTUAL STOP BAR DETECTOR LOCATION WILL BE DETERMINED DURING CONSTRUCTION BASED ON THE OPTIMAL LOCATION FOR TYPE OF DETECTOR SELECTED. FINAL LOCATION SHALL BE APPROVED BY THE ENGINEER.
5. STOP BAR DETECTION AREAS SHALL EXTEND FIVE FEET PAST THE STOP BAR. ACTUAL DETECTION ZONES SHALL BE SET UP FOR OPTIMAL DETECTION BY THE CONTRACTOR BASED ON THE FINAL PAVEMENT MARKINGS.
6. ALL PEDESTRIAN SIGNAL EQUIPMENT SHALL HAVE FLAT BLACK HOUSING.
7. ANY THINNING AND TRIMMING AND/OR REMOVAL OF TREES APPROVED BY THE ENGINEER FOR INSTALLING VEHICLE STOP BAR DETECTION SYSTEM SHALL BE PERFORMED IN ACCORDANCE WITH SECTION 201 AND WILL BE CONSIDERED INCIDENTAL TO ITEM 900.620 - SPECIAL PROVISION (VEHICLE STOP BAR DETECTION SYSTEM).
8. SALVAGE EXISTING SIGNAL EQUIPMENT (SIGNAL CONTROLLER, PEDESTRIAN COUNTDOWN HEADS, PEDESTRIAN PUSH BUTTONS, DETECTION EQUIPMENT) TO VTRANS. CONTACT THE DISTRICT 6 SIGNAL TECHNICIAN AT (802)655-1680 TO COORDINATE TRANSFER OF EQUIPMENT. PAYMENT WILL BE CONSIDERED INCIDENTAL TO ITEM 900.620 - SPECIAL PROVISION (VEHICLE SIGNAL HEADS, LED)(US 7 @ COLD RIVER RD.)
9. THE TRAFFIC SIGNAL CONTROLLER AND RELATED EQUIPMENT SHALL BE AN ECONOLITE ASC/3-2100 (NEMA TS2 TYPE 2) IN THE EXISTING CONTROLLER CABINET.
10. SWITCH-OVER NEW SIGNAL SYSTEM SHALL NOT OCCUR DURING PEAK OPERATING PERIODS. UNIFORMED TRAFFIC OFFICERS SHALL CONTROL TRAFFIC DURING SWITCH-OVER.
11. ALL SIGNALS SHALL DWELL ON THE US ROUTE 7 THRU MOVEMENT.
12. THE US ROUTE 7 THRU PHASE SHALL BE USED FOR THE START-UP PHASE FOLLOWING FLASHING OPERATION.

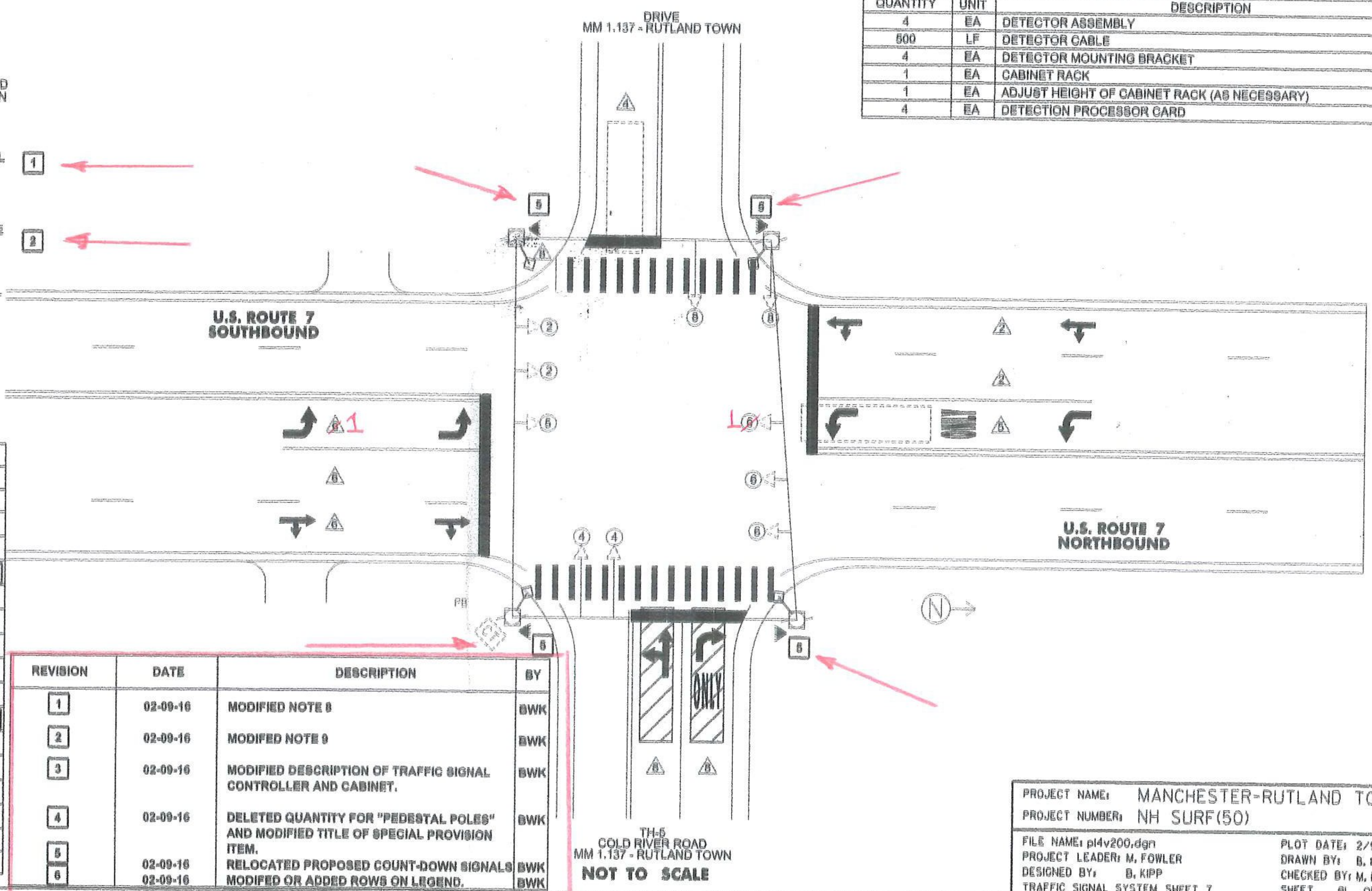
LEGEND	
DESCRIPTION	
EXISTING CONDUIT	
EXISTING JUNCTION BOX	
EXISTING CONTROLLER CABINET	
PROPOSED CONTROLLER CABINET	6
EXISTING POLE	
EXISTING DETECTION AREA	
DETECTION AREA	
EXISTING DETECTOR	
EXISTING VEHICLE SIGNAL	
PROPOSED VEHICLE SIGNAL	6
EXISTING PULL BOX	PB
EXISTING PEDESTRIAN SIGNAL	
PROPOSED COUNT-DOWN PEDESTRIAN SIGNAL	
EXISTING WIRELESS INTERCONNECT ANTENNA	
VEHICLE STOP BAR DETECTOR LOCATION	
ALTERNATIVE VEHICLE STOP BAR DETECTOR LOCATION	

REVISION	DATE	DESCRIPTION	BY
1	02-09-16	MODIFIED NOTE 8	BWK
2	02-09-16	MODIFIED NOTE 9	BWK
3	02-09-16	MODIFIED DESCRIPTION OF TRAFFIC SIGNAL CONTROLLER AND CABINET.	BWK
4	02-09-16	DELETED QUANTITY FOR "PEDESTAL POLES" AND MODIFIED TITLE OF SPECIAL PROVISION ITEM.	BWK
5	02-09-16	RELOCATED PROPOSED COUNT-DOWN SIGNALS	BWK
6	02-09-16	MODIFIED OR ADDED ROWS ON LEGEND.	BWK

ITEM 900.620 SPECIAL PROVISION (REMOVE AND REPLACE TRAFFIC SIGNAL CONTROLLER) (US 7 @ COLD RIVER RD.) RUTLAND TOWN MM 1.137		
QUANTITY	UNIT	DESCRIPTION
1	EA	TRAFFIC SIGNAL CONTROLLER (ECONOLITE ASC/3 TS2 TYPE 2)

ITEM 900.620 SPECIAL PROVISION (PEDESTRIAN SIGNAL HEAD, COUNTDOWN) (US 7 @ COLD RIVER RD.) RUTLAND TOWN MM 1.137		
QUANTITY	UNIT	DESCRIPTION
4	EA	COUNT-DOWN PEDESTRIAN SIGNAL WITH MOUNTING HARDWARE
4	EA	ACCESSIBLE PEDESTRIAN PUSHBUTTON ASSEMBLY (SEE NOTE 3)

ITEM 900.620 SPECIAL PROVISION (VEHICLE STOP BAR DETECTION SYSTEM) (US 7 @ COLD RIVER RD.) RUTLAND TOWN MM 0.684		
QUANTITY	UNIT	DESCRIPTION
4	EA	DETECTOR ASSEMBLY
500	LF	DETECTOR CABLE
4	EA	DETECTOR MOUNTING BRACKET
1	EA	CABINET RACK
1	EA	ADJUST HEIGHT OF CABINET RACK (AS NECESSARY)
4	EA	DETECTION PROCESSOR CARD



PROJECT NAME: MANCHESTER-RUTLAND TOWN  
 PROJECT NUMBER: NH SURF(50)  
 FILE NAME: pl4v200.dgn PLOT DATE: 2/9/2016  
 PROJECT LEADER: M. FOWLER DRAWN BY: B. KIPP  
 DESIGNED BY: B. KIPP CHECKED BY: M. FOWLER  
 TRAFFIC SIGNAL SYSTEM SHEET 7 SHEET 91 OF 105

TH-5  
 COLD RIVER ROAD  
 MM 1.137 - RUTLAND TOWN  
**NOT TO SCALE**