

NOTES:

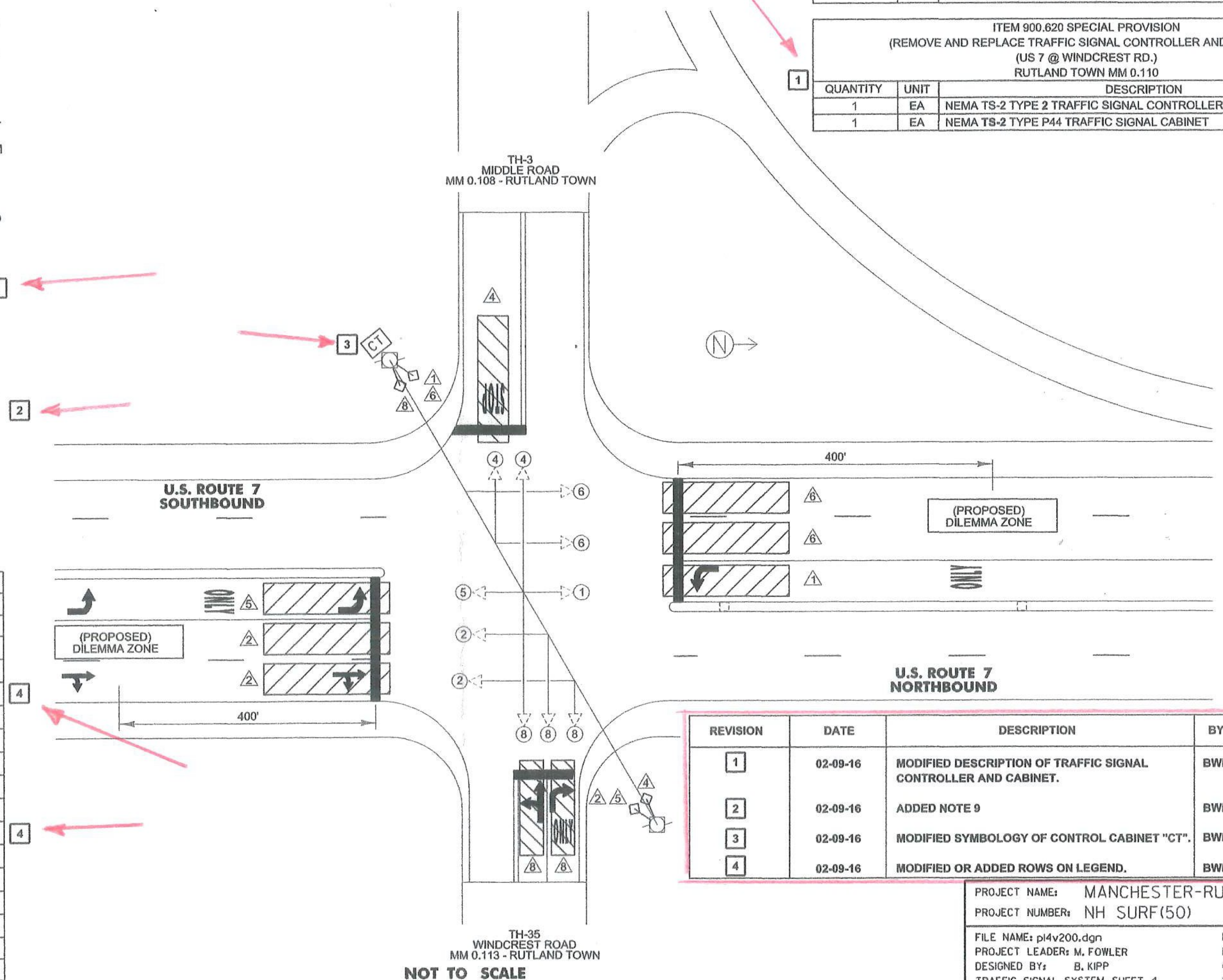
- THIS PLAN SHEET IS NOT TO SCALE AND SHALL ONLY BE USED AS A GUIDE FOR THE PLACEMENT OF THE HARDWARE LISTED. THE CONTRACTOR SHALL CONFIRM ALL LOCATIONS IN THE FIELD WITH THE ENGINEER PRIOR TO INSTALLATION. LOCATIONS MAY BE REVISED AS A RESULT OF THE SITE SURVEY.
- THE CONTRACTOR SHALL VERIFY IN THE FIELD THAT THERE IS ADEQUATE SPACE IN THE CONDUIT FOR DETECTION CABLE AND EQUIPMENT. IF ADDITIONAL CONDUIT INSTALLATION IS REQUIRED, ALL WORK ASSOCIATED FOR INSTALLATION WILL BE CONSIDERED INCIDENTAL TO ITEM 900.620 - SPECIAL PROVISION (VEHICLE STOP BAR DETECTION SYSTEM)(US 7 @ WINDCREST RD.). MATERIALS AND CONSTRUCTION TO BE IN ACCORDANCE WITH SECTION 678.
- THE ACTUAL STOP BAR DETECTOR LOCATION WILL BE DETERMINED DURING CONSTRUCTION BASED ON THE OPTIMAL LOCATION FOR TYPE OF DETECTOR SELECTED. FINAL LOCATION SHALL BE APPROVED BY THE ENGINEER.
- STOP BAR DETECTION AREAS SHALL EXTEND FIVE FEET PAST THE STOP BAR. ACTUAL DETECTION ZONES SHALL BE SET UP FOR OPTIMAL DETECTION BY THE CONTRACTOR BASED ON THE FINAL PAVEMENT MARKINGS.
- STOP BAR DETECTION SYSTEM SHALL BE OPERATIONAL PRIOR TO CUTTING LOOPS. EXISTING VEHICLE DETECTOR LOOPS SHALL BE CUT AT THE CURB LINE PRIOR TO MICRO-MILLING/RESURFACING AS DIRECTED BY THE ENGINEER. PAYMENT WILL BE CONSIDERED INCIDENTAL TO ITEM 900.620-SPECIAL PROVISION (VEHICLE STOP BAR DETECTION SYSTEM)(US 7 @ WINDCREST RD.).
- ANY THINNING AND TRIMMING AND/OR REMOVAL OF TREES APPROVED BY THE ENGINEER FOR INSTALLING VEHICLE STOP BAR DETECTION SYSTEM SHALL BE PERFORMED IN ACCORDANCE WITH SECTION 201 AND WILL BE CONSIDERED INCIDENTAL TO ITEM 900.620-SPECIAL PROVISION (VEHICLE STOP BAR DETECTION SYSTEM)(US 7 @ WINDCREST RD.).
- NEW TRAFFIC SIGNAL CONTROLLER SHALL BE NEMA TS-2, TYPE 2 ECONOLITE ASC3-2100, TRAFFICWARE ATC TRAFFIC CONTROLLER, MCCAIN ATC EX NEMA, TS2 P44 GROUND-MOUNTED CABINET WITH A FLAT BLACK FINISH. THE TRAFFIC CONTROL CABINET SHALL BE ORIENTED SO THAT THE DOOR DOES NOT FACE THE ROADWAY.
- ADVANCED DETECTION ZONES SHALL BE A MINIMUM OF 400' FROM THE STOP BAR AND SET UP PER MANUFACTURER'S INSTRUCTIONS AND RECOMMENDATIONS.
- SALVAGE EXISTING SIGNAL EQUIPMENT (SIGNAL CONTROLLER, CONTROLLER CABINET) TO VTRANS. CONTACT THE DISTRICT 5 SIGNAL TECHNICIAN AT (802)655-1580 TO COORDINATE TRANSFER OF EQUIPMENT. PAYMENT WILL BE CONSIDERED INCIDENTAL TO ITEM 900.620 - SPECIAL PROVISION (VEHICLE SIGNAL HEADS, LED)(US 7 @ WINDCREST RD.).

ITEM 900.620 SPECIAL PROVISION (ADVANCED VEHICLE DETECTION SYSTEM) (US 7 @ WINDCREST RD.) RUTLAND TOWN MM 0.110		
QUANTITY	UNIT	DESCRIPTION
2	EA	DETECTOR ASSEMBLY
1000	LF	DETECTOR CABLE
2	EA	DETECTOR MOUNTING BRACKET
1	EA	CABINET RACK
2	EA	DETECTION PROCESSOR CARD

ITEM 900.620 SPECIAL PROVISION (VEHICLE STOP BAR DETECTION SYSTEM) (US 7 @ WINDCREST RD.) RUTLAND TOWN MM 0.110		
QUANTITY	UNIT	DESCRIPTION
4	EA	DETECTOR ASSEMBLY
500	LF	DETECTOR CABLE
4	EA	DETECTOR MOUNTING BRACKET
1	EA	CABINET RACK
1	EA	ADJUST HEIGHT OF CABINET RACK (AS NECESSARY)
4	EA	DETECTION PROCESSOR CARD
1	EA	VEHICLE DETECTOR POWER SUPPLY

ITEM 900.620 SPECIAL PROVISION (REMOVE AND REPLACE TRAFFIC SIGNAL CONTROLLER AND CABINET) (US 7 @ WINDCREST RD.) RUTLAND TOWN MM 0.110		
QUANTITY	UNIT	DESCRIPTION
1	EA	NEMA TS-2 TYPE 2 TRAFFIC SIGNAL CONTROLLER
1	EA	NEMA TS-2 TYPE P44 TRAFFIC SIGNAL CABINET

LEGEND	
DESCRIPTION	
EXISTING CONDUIT	
EXISTING JUNCTION BOX	
EXISTING CONTROLLER CABINET	
PROPOSED CONTROLLER CABINET	
EXISTING POLE	
EXISTING DETECTION AREA	
DETECTION AREA	
EXISTING DETECTOR	
EXISTING VEHICLE SIGNAL	
PROPOSED VEHICLE SIGNAL	
EXISTING PULL BOX	
EXISTING PEDESTRIAN SIGNAL	
PROPOSED COUNT-DOWN PEDESTRIAN SIGNAL	
EXISTING WIRELESS INTERCONNECT ANTENNA	
VEHICLE STOP BAR DETECTOR LOCATION	
ALTERNATIVE VEHICLE STOP BAR DETECTOR LOCATION	



REVISION	DATE	DESCRIPTION	BY
1	02-09-16	MODIFIED DESCRIPTION OF TRAFFIC SIGNAL CONTROLLER AND CABINET.	BWK
2	02-09-16	ADDED NOTE 9	BWK
3	02-09-16	MODIFIED SYMBOLOGY OF CONTROL CABINET "CT".	BWK
4	02-09-16	MODIFIED OR ADDED ROWS ON LEGEND.	BWK

PROJECT NAME: MANCHESTER-RUTLAND TOWN
 PROJECT NUMBER: NH SURF(50)
 FILE NAME: p14v200.dgn
 PROJECT LEADER: M. FOWLER
 DESIGNED BY: B. KIPP
 TRAFFIC SIGNAL SYSTEM SHEET 4
 PLOT DATE: 2/9/2016
 DRAWN BY: B. KIPP
 CHECKED BY: M. FOWLER
 SHEET 88 OF 105

NOT TO SCALE