

SPECIAL PROVISION(DURABLE 4 INCH WHITE LINE, POLYUREA)(28 MILS)

RUTLAND TOWN:
MM 0.844 EDGE LINES RT (DIAMOND RUN MALL PLACE)
MM 0.844 EDGE LINES LT (HOLIDAY INN)
MM 0.844 LANE LINE LT (HOLIDAY INN)

SPECIAL PROVISION(DURABLE 4 INCH YELLOW LINE, POLYUREA)(28 MILS)

RUTLAND TOWN:
MM 0.844 DOUBLE YELLOW RT (DIAMOND RUN MALL PLACE)
MM 0.844 DOUBLE YELLOW LT (HOLIDAY INN)

SPECIAL PROVISION(DURABLE 6 INCH WHITE LINE, POLYUREA)(28 MILS)

RUTLAND TOWN (NORTHBOUND):
MM 0.587 - MM 0.675 DASHED CL
MM 0.587 - MM 0.675 SOLID RT
MM 0.600 - MM 0.651 DOTTED LANE LINE RT
MM 0.613 - MM 0.651 DOTTED LANE LINE LT
MM 0.651 - MM 0.675 SOLID LANE LINE RT
MM 0.651 - MM 0.675 SOLID LANE LINE LT
MM 0.692 - MM 0.765 DASHED CL
MM 0.692 - MM 0.765 SOLID RT

RUTLAND TOWN (SOUTHBOUND):
MM 0.587 - MM 0.675 DASHED CL
MM 0.587 - MM 0.675 SOLID LT
MM 0.692 - MM 0.765 DASHED CL
MM 0.692 - MM 0.765 SOLID LT
MM 0.692 - MM 0.737 SOLID LANE LINE RT
MM 0.737 - MM 0.763 DOTTED LANE LINE RT

TEMPORARY 4 INCH WHITE LINE, PAINT

RUTLAND TOWN:
MM 0.844 EDGE LINES RT (DIAMOND RUN MALL PLACE)
MM 0.844 EDGE LINES LT (HOLIDAY INN)
MM 0.844 LANE LINE LT (HOLIDAY INN)

TEMPORARY 4 INCH YELLOW LINE, PAINT

RUTLAND TOWN:
MM 0.844 DOUBLE YELLOW RT (DIAMOND RUN MALL PLACE)
MM 0.844 DOUBLE YELLOW LT (HOLIDAY INN)

TEMPORARY 6 INCH WHITE LINE, PAINT

RUTLAND TOWN (NORTHBOUND):
MM 0.587 - MM 0.675 DASHED CL
MM 0.587 - MM 0.675 SOLID RT
MM 0.600 - MM 0.651 DOTTED LANE LINE RT
MM 0.613 - MM 0.651 DOTTED LANE LINE LT
MM 0.651 - MM 0.675 SOLID LANE LINE RT
MM 0.651 - MM 0.675 SOLID LANE LINE LT
MM 0.692 - MM 0.765 DASHED CL
MM 0.692 - MM 0.765 SOLID RT

RUTLAND TOWN (SOUTHBOUND):
MM 0.587 - MM 0.675 DASHED CL
MM 0.587 - MM 0.675 SOLID LT
MM 0.692 - MM 0.765 DASHED CL
MM 0.692 - MM 0.765 SOLID LT
MM 0.692 - MM 0.737 SOLID LANE LINE RT
MM 0.737 - MM 0.763 DOTTED LANE LINE RT

SPECIAL PROVISION(DURABLE 6 INCH YELLOW LINE, POLYUREA)(28 MILS)

RUTLAND TOWN (NORTHBOUND):
MM 0.587 - MM 0.675 SOLID LT
MM 0.692 - MM 0.737 SOLID LT
MM 0.737 - MM 0.765 DOUBLE SOLID LT

DIAMOND RUN PLACE:

MM 0.684 RT, DOUBLE SOLID CL
RUTLAND TOWN (SOUTHBOUND):
MM 0.587 - MM 0.675 SOLID RT
MM 0.692 - MM 0.737 SOLID RT
MM 0.737 - MM 0.765 DOUBLE SOLID RT

HOLIDAY INN:

MM 0.684 LT, DOUBLE SOLID CL

SPECIAL PROVISION(DURABLE 8 INCH YELLOW LINE, POLYUREA)(28 MILS)

RUTLAND TOWN:
MM 0.737 - MM 0.765 GORE AREA

TEMPORARY 6 INCH YELLOW LINE, PAINT

RUTLAND TOWN (NORTHBOUND):
MM 0.587 - MM 0.675 SOLID LT
MM 0.692 - MM 0.737 SOLID LT
MM 0.737 - MM 0.765 DOUBLE SOLID LT

DIAMOND RUN PLACE:

MM 0.684 RT, DOUBLE SOLID CL
RUTLAND TOWN (SOUTHBOUND):
MM 0.587 - MM 0.675 SOLID RT
MM 0.692 - MM 0.737 SOLID RT
MM 0.737 - MM 0.765 DOUBLE SOLID RT

HOLIDAY INN:

MM 0.684 LT, DOUBLE SOLID CL

TEMPORARY 8 INCH YELLOW LINE, PAINT

RUTLAND TOWN:
MM 0.737 - MM 0.765 GORE AREA

SPECIAL PROVISION(DURABLE LETTER OR SYMBOL, POLYUREA)(28 MILS)

RUTLAND TOWN (NORTHBOUND):
MM 0.651 RT, ARROW (1 EA)
MM 0.651 LT, ARROW (1 EA)
MM 0.662 RT, "O,N,L,Y" (4 EA)
MM 0.662 LT, "O,N,L,Y" (4 EA)
MM 0.673 RT, ARROW (1 EA)
MM 0.673 LT, ARROW (1 EA)

DIAMOND RUN PLACE:
MM 0.684 RT, ARROW (1 EA)
MM 0.684 RT, DOUBLE ARROW (2 EA)

RUTLAND TOWN (SOUTHBOUND):
MM 0.694 RT, ARROW (1 EA)
MM 0.694 RT, DOUBLE ARROW (2 EA)
MM 0.703 RT, "O,N,L,Y" (4 EA)
MM 0.712 RT, ARROW (1 EA)
MM 0.712 RT, DOUBLE ARROW (2 EA)
MM 0.721 RT, "O,N,L,Y" (4 EA)
MM 0.730 RT, ARROW (1 EA)
MM 0.730 RT, DOUBLE ARROW (2 EA)

HOLIDAY INN:
MM 0.684 LT, ARROW (1 EA)
MM 0.684 LT, DOUBLE ARROW (2 EA)

SPECIAL PROVISION(DURABLE 24 INCH STOP BAR, POLYUREA)(28 MILS)

RUTLAND TOWN (NORTHBOUND):
MM 0.675
MM 0.684 (DIAMOND RUN PLACE)

RUTLAND TOWN (SOUTHBOUND):
MM 0.684 (HOLIDAY INN)
MM 0.692

MILLED RUMBLE STRIPS

RUTLAND TOWN (SOUTHBOUND):
MM 0.587 - MM 0.675 LT

TEMPORARY LETTER OR SYMBOL, PAINT

RUTLAND TOWN (NORTHBOUND):
MM 0.651 RT, ARROW (1 EA)
MM 0.651 LT, ARROW (1 EA)
MM 0.662 RT, "O,N,L,Y" (4 EA)
MM 0.662 LT, "O,N,L,Y" (4 EA)
MM 0.673 RT, ARROW (1 EA)
MM 0.673 LT, ARROW (1 EA)

DIAMOND RUN PLACE:
MM 0.684 RT, ARROW (1 EA)
MM 0.684 RT, DOUBLE ARROW (2 EA)

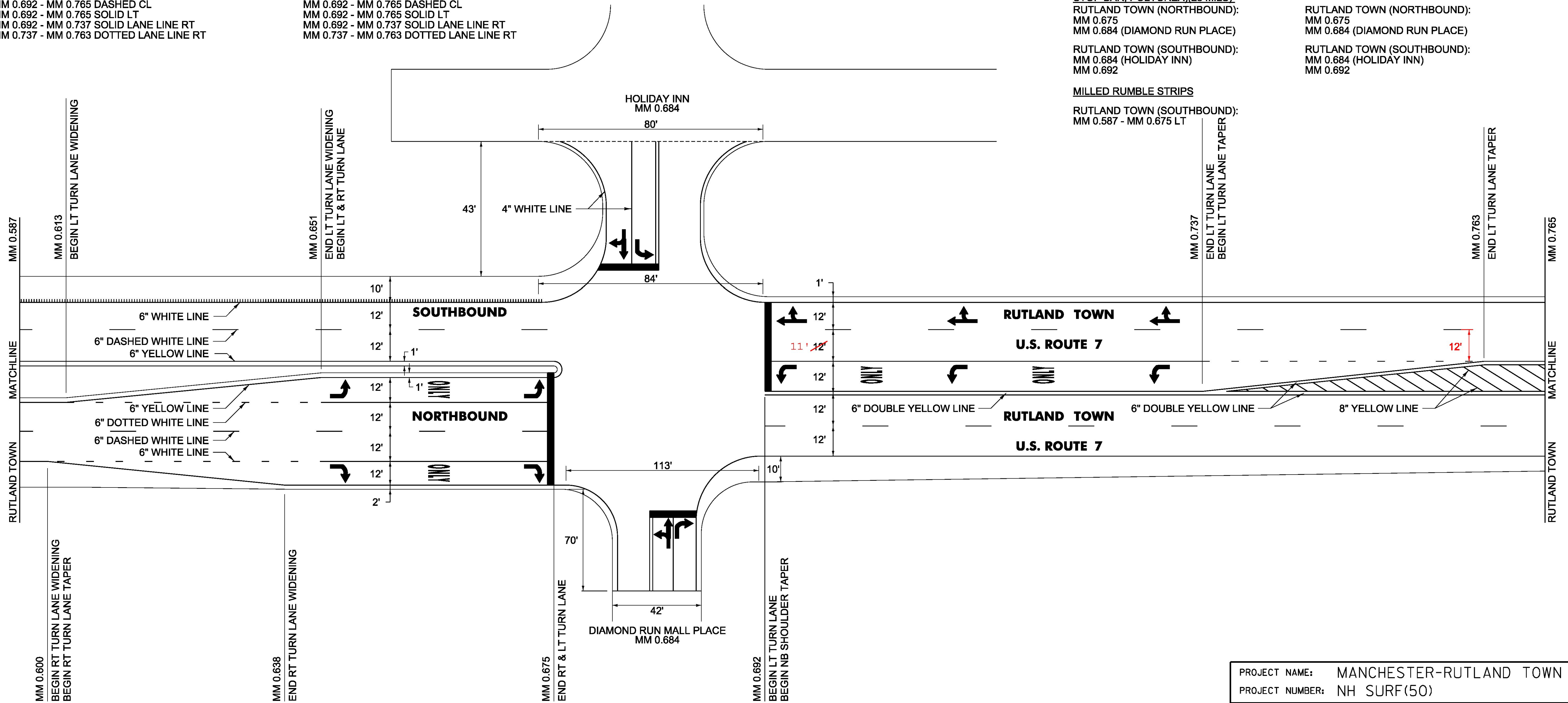
RUTLAND TOWN (SOUTHBOUND):
MM 0.694 RT, ARROW (1 EA)
MM 0.694 RT, DOUBLE ARROW (2 EA)
MM 0.703 RT, "O,N,L,Y" (4 EA)
MM 0.712 RT, ARROW (1 EA)
MM 0.712 RT, DOUBLE ARROW (2 EA)
MM 0.721 RT, "O,N,L,Y" (4 EA)
MM 0.730 RT, ARROW (1 EA)
MM 0.730 RT, DOUBLE ARROW (2 EA)

HOLIDAY INN:
MM 0.684 LT, ARROW (1 EA)
MM 0.684 LT, DOUBLE ARROW (2 EA)

TEMPORARY 24 INCH STOP BAR, PAINT

RUTLAND TOWN (NORTHBOUND):
MM 0.675
MM 0.684 (DIAMOND RUN PLACE)

RUTLAND TOWN (SOUTHBOUND):
MM 0.684 (HOLIDAY INN)
MM 0.692



PROJECT NAME:	MANCHESTER-RUTLAND TOWN
PROJECT NUMBER:	NH SURF(50)
FILE NAME:	layout67.dgn
DESIGNED BY:	B. KIPP
PLANNED BY:	B. KIPP
PROJECT LEADER:	M. FOWLER
CHECKED BY:	M. FOWLER
PLOT DATE:	1/14/2016
DRAWN BY:	B. KIPP
SHEET	81 OF 105