

**SPECIAL PROVISION(DURABLE 6 INCH WHITE LINE, POLYUREA)(28 MILS)**  
 CLARENDON (NORTHBOUND):  
 MM 5.400 - MM 5.633 SOLID RT  
 MM 5.400 - MM 5.633 DASHED CL  
 MM 5.461 - MM 5.500 DOTTED LANE LINE LT  
 MM 5.500 - MM 5.527 SOLID LANE LINE LT  
 MM 5.527 - MM 5.581 DOTTED LANE LINE RT  
 MM 5.581 - MM 5.633 SOLID LANE LINE RT

CLARENDON (SOUTHBOUND):  
 MM 5.400 - MM 5.549 SOLID LT  
 MM 5.400 - MM 5.633 DASHED CL  
 MM 5.563 - MM 5.609 SOLID LT  
 MM 5.609 - MM 5.633 SOLID LT

**SPECIAL PROVISION(DURABLE 6 INCH YELLOW LINE, POLYUREA)(28 MILS)**  
 CLARENDON (NORTHBOUND):  
 MM 5.400 - MM 5.527 SOLID LT  
 MM 5.560 - MM 5.633 SOLID LT

CLARENDON (SOUTHBOUND):  
 MM 5.400 - MM 5.527 SOLID RT  
 MM 5.560 - MM 5.633 SOLID RT

**TEMPORARY 6 INCH WHITE LINE, PAINT**  
 CLARENDON (NORTHBOUND):  
 MM 5.400 - MM 5.633 SOLID RT  
 MM 5.400 - MM 5.633 DASHED CL  
 MM 5.461 - MM 5.500 DOTTED LANE LINE LT  
 MM 5.500 - MM 5.527 SOLID LANE LINE LT  
 MM 5.527 - MM 5.581 DOTTED LANE LINE RT  
 MM 5.581 - MM 5.633 SOLID LANE LINE RT

CLARENDON (SOUTHBOUND):  
 MM 5.400 - MM 5.549 SOLID LT  
 MM 5.400 - MM 5.633 DASHED CL  
 MM 5.563 - MM 5.609 SOLID LT  
 MM 5.609 - MM 5.633 SOLID LT

**TEMPORARY 6 INCH YELLOW LINE, PAINT**  
 CLARENDON (NORTHBOUND):  
 MM 5.400 - MM 5.527 SOLID LT  
 MM 5.560 - MM 5.633 SOLID LT

CLARENDON (SOUTHBOUND):  
 MM 5.400 - MM 5.527 SOLID RT  
 MM 5.560 - MM 5.633 SOLID RT

**SPECIAL PROVISION(DURABLE 12 INCH WHITE LINE, POLYUREA)(28 MILS)**  
 CLARENDON (NORTHBOUND):  
 MM 5.609 - MM 5.633 GORE AREA LT

**SPECIAL PROVISION(DURABLE LETTER OR SYMBOL, POLYUREA)(28 MILS)**  
 CLARENDON (NORTHBOUND):  
 MM 5.501 LT, ARROW (1 EA)  
 MM 5.512 LT, "O,N,L,Y" (4 EA)  
 MM 5.523 LT, ARROW (1 EA)  
 MM 5.590 RT, "S,I,G,N,A,L" (6 EA)  
 MM 5.590 LT, "S,I,G,N,A,L" (6 EA)  
 MM 5.598 RT, "A,H,E,A,D" (5 EA)  
 MM 5.598 LT, "A,H,E,A,D" (5 EA)  
 MM 5.604 RT, ARROW (1 EA)  
 MM 5.619 RT, "O,N,L,Y" (4 EA)  
 MM 5.634 RT, ARROW (1 EA)

CLARENDON (SOUTHBOUND):  
 VT ROUTE 7B:  
 MM 5.556 LT, "S,T,O,P" (4 EA)

**TEMPORARY 12 INCH WHITE LINE, PAINT**  
 CLARENDON (NORTHBOUND):  
 MM 5.609 - MM 5.633 GORE AREA LT

**TEMPORARY LETTER OR SYMBOL, PAINT**  
 CLARENDON (NORTHBOUND):  
 MM 5.501 LT, ARROW (1 EA)  
 MM 5.512 LT, "O,N,L,Y" (4 EA)  
 MM 5.523 LT, ARROW (1 EA)  
 MM 5.590 RT, "S,I,G,N,A,L" (6 EA)  
 MM 5.590 LT, "S,I,G,N,A,L" (6 EA)  
 MM 5.598 RT, "A,H,E,A,D" (5 EA)  
 MM 5.598 LT, "A,H,E,A,D" (5 EA)  
 MM 5.604 RT, ARROW (1 EA)  
 MM 5.619 RT, "O,N,L,Y" (4 EA)  
 MM 5.634 RT, ARROW (1 EA)

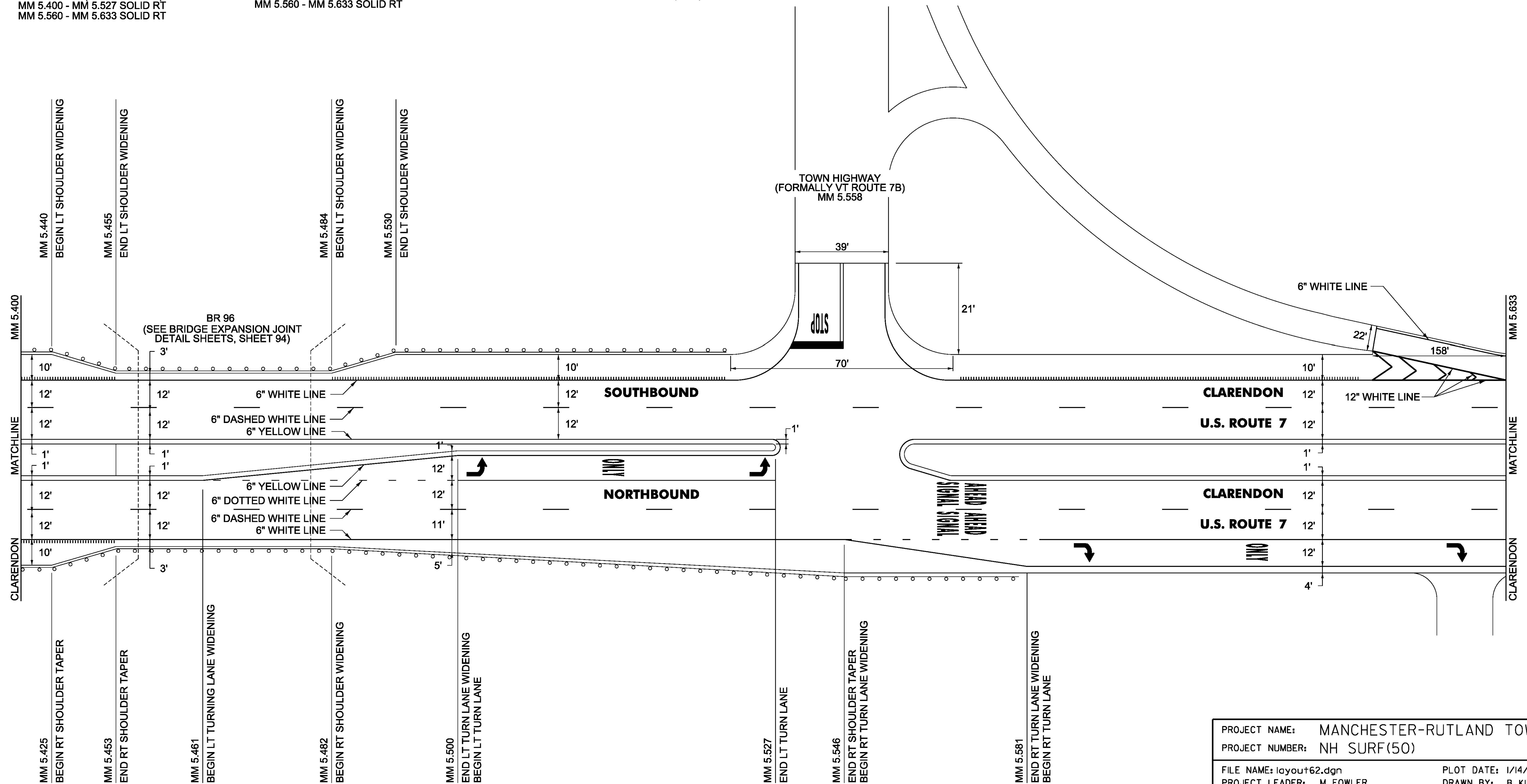
CLARENDON (SOUTHBOUND):  
 VT ROUTE 7B:  
 MM 5.556 LT, "S,T,O,P" (4 EA)

**SPECIAL PROVISION(DURABLE 24 INCH STOP BAR, POLYUREA)(28 MILS)**  
 CLARENDON (SOUTHBOUND):  
 MM 5.558 LT, VT ROUTE 7B

**TEMPORARY 24 INCH STOP BAR, PAINT**  
 CLARENDON (SOUTHBOUND):  
 MM 5.558 LT, VT ROUTE 7B

**MILLED RUMBLE STRIPS (SHOULDER)**  
 CLARENDON (NORTHBOUND):  
 MM 5.400 - MM 5.436 RT

CLARENDON (SOUTHBOUND):  
 MM 5.400 - MM 5.450 LT  
 MM 5.493 - MM 5.544 LT  
 MM 5.573 - MM 5.609 LT



**NOT TO SCALE**

PROJECT NAME:	MANCHESTER-RUTLAND TOWN
PROJECT NUMBER:	NH SURF(50)
FILE NAME:	layout62.dgn
PROJECT LEADER:	M. FOWLER
DESIGNED BY:	B. KIPP
PLAN SHEET	62
PLOT DATE:	1/14/2016
DRAWN BY:	B. KIPP
CHECKED BY:	M. FOWLER
SHEET	76 OF 105