

SPECIAL PROVISION(DURABLE 6 INCH WHITE LINE, POLYUREA)(28 MILS)
 CLARENDON (NORTHBOUND):
 MM 5.000 - MM 5.171 SOLID RT
 MM 5.000 - MM 5.171 DASHED CL
 MM 5.091 - MM 5.121 DOTTED LANE LINE LT
 MM 5.121 - MM 5.171 SOLID LANE LINE LT
 MM 5.202 - MM 5.400 SOLID RT
 MM 5.202 - MM 5.400 DASHED CL

CLARENDON (SOUTHBOUND):
 MM 5.000 - MM 5.171 SOLID LT
 MM 5.000 - MM 5.171 DASHED CL
 MM 5.202 - MM 5.400 SOLID LT
 MM 5.202 - MM 5.400 DASHED CL
 MM 5.202 - MM 5.240 SOLID LANE LINE RT
 MM 5.202 - MM 5.246 SOLID LANE LINE LT
 MM 5.240 - MM 5.269 DOTTED LANE LINE RT
 MM 5.246 - MM 5.269 DOTTED LANE LINE LT

SPECIAL PROVISION(DURABLE 6 INCH YELLOW LINE, POLYUREA)(28 MILS)
 CLARENDON (NORTHBOUND):
 MM 5.000 - MM 5.171 SOLID RT
 MM 5.202 - MM 5.400 SOLID RT

TH-4:
 MM 5.182 RT SOLID RT & LT

CLARENDON (SOUTHBOUND):
 MM 5.000 - MM 5.171 SOLID LT
 MM 5.202 - MM 5.400 SOLID RT

TH-4:
 MM 5.182 LT SOLID RT & LT

TEMPORARY 6 INCH WHITE LINE, PAINT
 CLARENDON (NORTHBOUND):
 MM 5.000 - MM 5.171 SOLID RT
 MM 5.000 - MM 5.171 DASHED CL
 MM 5.091 - MM 5.121 DOTTED LANE LINE LT
 MM 5.121 - MM 5.171 SOLID LANE LINE LT
 MM 5.202 - MM 5.400 SOLID RT
 MM 5.202 - MM 5.400 DASHED CL

CLARENDON (SOUTHBOUND):
 MM 5.000 - MM 5.171 SOLID LT
 MM 5.000 - MM 5.171 DASHED CL
 MM 5.202 - MM 5.400 SOLID LT
 MM 5.202 - MM 5.400 DASHED CL
 MM 5.202 - MM 5.240 SOLID LANE LINE RT
 MM 5.202 - MM 5.246 SOLID LANE LINE LT
 MM 5.240 - MM 5.269 DOTTED LANE LINE RT
 MM 5.246 - MM 5.269 DOTTED LANE LINE LT

TEMPORARY 6 INCH YELLOW LINE, PAINT
 CLARENDON (NORTHBOUND):
 MM 5.000 - MM 5.171 SOLID RT
 MM 5.202 - MM 5.400 SOLID RT

TH-4:
 MM 5.182 RT SOLID RT & LT

CLARENDON (SOUTHBOUND):
 MM 5.000 - MM 5.171 SOLID LT
 MM 5.202 - MM 5.400 SOLID RT

TH-4:
 MM 5.182 LT SOLID RT & LT

SPECIAL PROVISION(DURABLE LETTER OR SYMBOL, POLYUREA)(28 MILS)
 CLARENDON (NORTHBOUND):
 MM 5.030 RT, "S,I,G,N,A,L" (6 EA)
 MM 5.030 LT, "S,I,G,N,A,L" (6 EA)
 MM 5.037 RT, "A,H,E,A,D" (5 EA)
 MM 5.037 LT, "A,H,E,A,D" (5 EA)
 MM 5.122 RT, ARROW (1 EA)
 MM 5.122 LT, DOUBLE ARROW (2 EA)
 MM 5.135 RT, "O,N,L,Y" (4 EA)
 MM 5.148 RT, ARROW (1 EA)
 MM 5.148 RT, DOUBLE ARROW (2 EA)

TH-4:
 MM 5.171 RT, "S,T,O,P" (4 EA)

CLARENDON (SOUTHBOUND):
 MM 5.203 RT, ARROW (1 EA)
 MM 5.203 LT, ARROW (1 EA)
 MM 5.217 RT, "O,N,L,Y" (4 EA)
 MM 5.217 LT, "O,N,L,Y" (4 EA)
 MM 5.231 RT, ARROW (1 EA)
 MM 5.231 LT, ARROW (1 EA)
 MM 5.337 RT, "A,H,E,A,D" (5 EA)
 MM 5.337 LT, "A,H,E,A,D" (5 EA)
 MM 5.344 RT, "S,I,G,N,A,L" (6 EA)
 MM 5.344 LT, "S,I,G,N,A,L" (6 EA)

TH-4:
 MM 5.171 LT, "S,T,O,P" (4 EA)

TEMPORARY LETTER OR SYMBOL, PAINT
 CLARENDON (NORTHBOUND):
 MM 5.030 RT, "S,I,G,N,A,L" (6 EA)
 MM 5.030 LT, "S,I,G,N,A,L" (6 EA)
 MM 5.037 RT, "A,H,E,A,D" (5 EA)
 MM 5.037 LT, "A,H,E,A,D" (5 EA)
 MM 5.122 RT, ARROW (1 EA)
 MM 5.122 LT, DOUBLE ARROW (2 EA)
 MM 5.135 RT, "O,N,L,Y" (4 EA)
 MM 5.148 RT, ARROW (1 EA)
 MM 5.148 RT, DOUBLE ARROW (2 EA)

TH-4:
 MM 5.171 RT, "S,T,O,P" (4 EA)

CLARENDON (SOUTHBOUND):
 MM 5.203 RT, ARROW (1 EA)
 MM 5.203 LT, ARROW (1 EA)
 MM 5.217 RT, "O,N,L,Y" (4 EA)
 MM 5.217 LT, "O,N,L,Y" (4 EA)
 MM 5.231 RT, ARROW (1 EA)
 MM 5.231 LT, ARROW (1 EA)
 MM 5.337 RT, "A,H,E,A,D" (5 EA)
 MM 5.337 LT, "A,H,E,A,D" (5 EA)
 MM 5.344 RT, "S,I,G,N,A,L" (6 EA)
 MM 5.344 LT, "S,I,G,N,A,L" (6 EA)

TH-4:
 MM 5.202 LT, "S,T,O,P" (4 EA)

SPECIAL PROVISION(DURABLE 24 INCH STOP BAR, POLYUREA)(28 MILS)
 CLARENDON (NORTHBOUND):
 MM 5.171
 MM 5.186 RT, TH-4

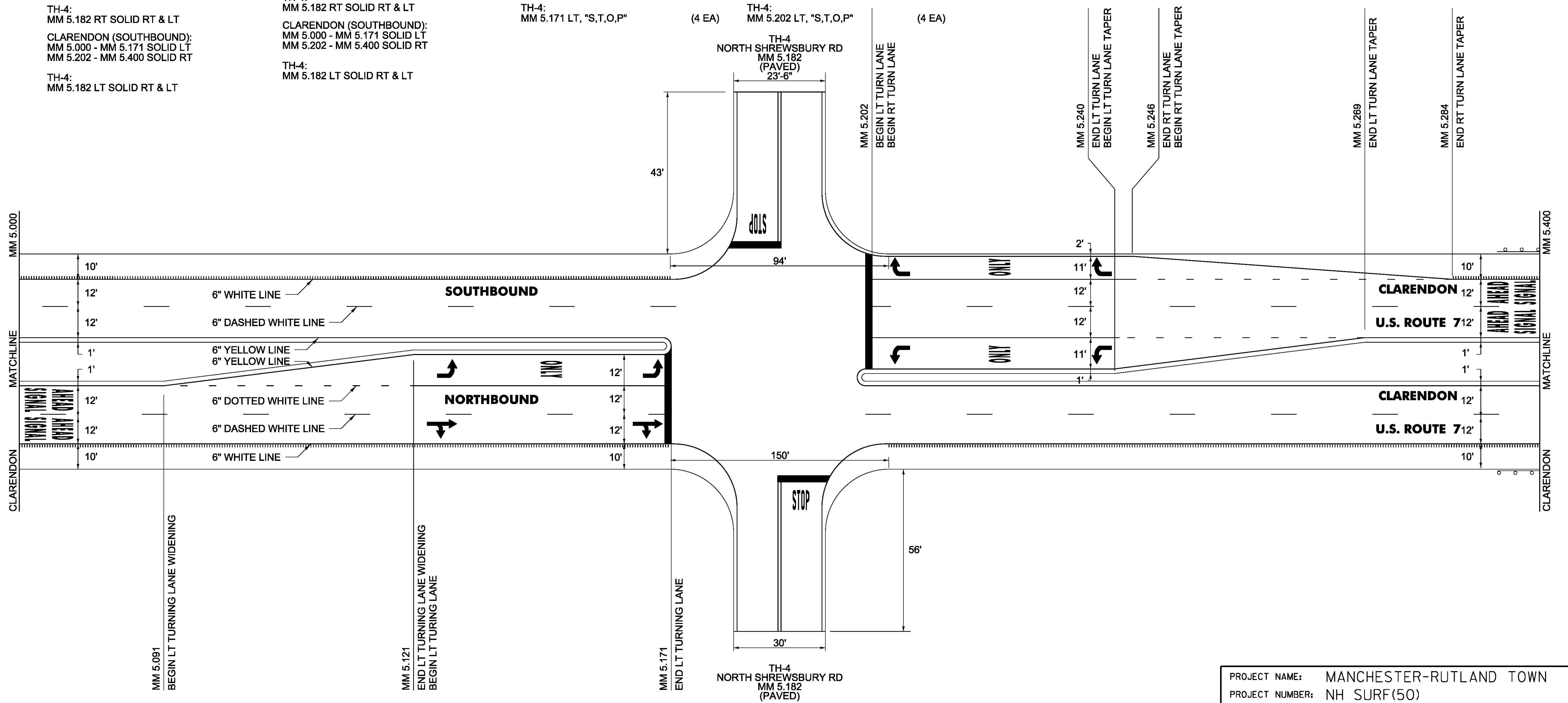
CLARENDON (SOUTHBOUND):
 MM 5.189 LT, TH-4
 MM 5.202

TEMPORARY 24 INCH STOP BAR, PAINT
 CLARENDON (NORTHBOUND):
 MM 5.171
 MM 5.186 RT, TH-4

CLARENDON (SOUTHBOUND):
 MM 5.189 LT, TH-4
 MM 5.202

MILLED RUMBLE STRIPS (SHOULDER)
 CLARENDON (NORTHBOUND):
 MM 5.000 - MM 5.171 RT
 MM 5.202 - MM 5.400 RT

CLARENDON (SOUTHBOUND):
 MM 5.000 - MM 5.171 LT
 MM 5.284 - MM 5.400 LT



NOT TO SCALE

PROJECT NAME:	MANCHESTER-RUTLAND TOWN
PROJECT NUMBER:	NH SURF(50)
FILE NAME:	layout61.dgn
PROJECT LEADER:	M. FOWLER
DESIGNED BY:	B. KIPP
PLAN SHEET 61	
PLOT DATE:	1/14/2016
DRAWN BY:	B. KIPP
CHECKED BY:	M. FOWLER
SHEET 75	OF 105