

SPECIAL PROVISION(DURABLE 6 INCH WHITE LINE, POLYUREA)(28 MILS)

CLARENDON (NORTHBOUND):
MM 2.750 - MM 2.861 SOLID RT
MM 2.750 - MM 3.310 DASHED CL
MM 2.873 - MM 3.390 SOLID RT
MM 3.206 - MM 3.263 DOTTED LANE LINE RT
MM 3.222 - MM 3.263 DOTTED LANE LINE LT
MM 3.263 - MM 3.310 SOLID LANE LINE RT
MM 3.263 - MM 3.310 SOLID LANE LINE LT
MM 3.334 - MM 3.447 DASHED CL
MM 3.379 - MM 3.447 SOLID LANE LINE RT

CLARENDON (SOUTHBOUND):
MM 2.750 - MM 3.310 DASHED CL
MM 2.750 - MM 3.312 SOLID LT
MM 3.335 - MM 3.447 SOLID LT
MM 3.334 - MM 3.447 DASHED CL
MM 3.334 - MM 3.390 SOLID LANE LINE RT
MM 3.390 - MM 3.451 DOTTED LANE LINE RT

SPECIAL PROVISION(DURABLE 8 INCH YELLOW LINE, POLYUREA)(28 MILS)

CLARENDON (NORTHBOUND):
MM 2.869 HATCHED AREA RT

SPECIAL PROVISION(DURABLE 4 INCH YELLOW LINE, POLYUREA)(28 MILS)

TH 19 (CROSSROAD ROAD)
MM 2.869 DOUBLE YELLOW LT

SPECIAL PROVISION(DURABLE 12 INCH WHITE LINE, POLYUREA)(28 MILS)

CLARENDON (NORTHBOUND):
MM 3.310 - MM 3.319 GORE AREA RT
MM 3.391 - MM 3.447 GORE AREA RT

TEMPORARY 6 INCH WHITE LINE, PAINT

CLARENDON (NORTHBOUND):
MM 2.750 - MM 2.861 SOLID RT
MM 2.750 - MM 3.310 DASHED CL
MM 2.873 - MM 3.390 SOLID RT
MM 3.206 - MM 3.263 DOTTED LANE LINE RT
MM 3.222 - MM 3.263 DOTTED LANE LINE LT
MM 3.263 - MM 3.310 SOLID LANE LINE RT
MM 3.263 - MM 3.310 SOLID LANE LINE LT
MM 3.334 - MM 3.447 DASHED CL
MM 3.379 - MM 3.447 SOLID LANE LINE RT

CLARENDON (SOUTHBOUND):
MM 2.750 - MM 3.310 DASHED CL
MM 2.750 - MM 2.863 SOLID LT
MM 2.871 - MM 3.447 SOLID LT
MM 3.334 - MM 3.447 DASHED CL
MM 3.334 - MM 3.390 SOLID LANE LINE RT
MM 3.390 - MM 3.451 DOTTED LANE LINE RT

TEMPORARY 8 INCH YELLOW LINE, PAINT

CLARENDON (NORTHBOUND):
MM 2.869 HATCHED AREA RT

TEMPORARY 4 INCH YELLOW LINE, PAINT

TH 19 (CROSSROAD ROAD)
MM 2.869 DOUBLE YELLOW LT

TEMPORARY 12 INCH WHITE LINE, PAINT

CLARENDON (NORTHBOUND):
MM 3.310 - MM 3.319 GORE AREA RT
MM 3.391 - MM 3.447 GORE AREA RT

SPECIAL PROVISION(DURABLE 6 INCH YELLOW LINE, POLYUREA)(28 MILS)

CLARENDON (NORTHBOUND):
MM 2.750 - MM 3.310 SOLID LT
MM 2.874 - MM 3.447 SOLID LT

CLARENDON (SOUTHBOUND):
MM 2.750 - MM 3.310 SOLID RT
MM 2.874 - MM 3.447 SOLID RT

SPECIAL PROVISION(DURABLE 24 INCH STOP BAR, POLYUREA)(28 MILS)

CLARENDON (NORTHBOUND):
MM 3.310 CL, US ROUTE 7
MM 3.328 RT, VT ROUTE 103

CLARENDON (SOUTHBOUND):
MM 3.319 LT, TH-19 (CROSSROAD ROAD)
MM 3.334 CL, US ROUTE 7

TEMPORARY 6 INCH YELLOW LINE, PAINT

CLARENDON (NORTHBOUND):
MM 2.750 - MM 3.310 SOLID LT
MM 2.874 - MM 3.447 SOLID LT

CLARENDON (SOUTHBOUND):
MM 2.750 - MM 3.310 SOLID RT
MM 2.874 - MM 3.447 SOLID RT

TEMPORARY 24 INCH STOP BAR, PAINT

CLARENDON (NORTHBOUND):
MM 3.310 CL, US ROUTE 7
MM 3.328 RT, VT ROUTE 103

CLARENDON (SOUTHBOUND):
MM 3.319 LT, TH-19 (CROSSROAD ROAD)
MM 3.334 CL, US ROUTE 7

SPECIAL PROVISION(DURABLE LETTER OR SYMBOL, POLYUREA)(28 MILS)

CLARENDON (NORTHBOUND):
MM 3.162 RT, "S,I,G,N,A,L" (6 EA)
MM 3.162 LT, "S,I,G,N,A,L" (6 EA)
MM 3.169 RT, "A,H,E,A,D" (5 EA)
MM 3.169 LT, "A,H,E,A,D" (5 EA)
MM 3.253 RT, ARROW (1 EA)
MM 3.253 LT, ARROW (1 EA)
MM 3.266 RT, "O,N,L,Y" (4 EA)
MM 3.266 LT, "O,N,L,Y" (4 EA)
MM 3.277 RT, ARROW (1 EA)
MM 3.277 LT, ARROW (1 EA)
MM 3.288 RT, "O,N,L,Y" (4 EA)
MM 3.288 LT, "O,N,L,Y" (4 EA)
MM 3.299 RT, ARROW (1 EA)
MM 3.299 LT, ARROW (1 EA)

VT ROUTE 103:
MM 3.321 RT, YIELDING MARKERS (5 EA)
MM 3.330 RT, "S,T,O,P" (4 EA)

CLARENDON (SOUTHBOUND):
MM 3.319 LT, "S,T,O,P" (4 EA)
MM 3.338 RT, ARROW (1 EA)
MM 3.353 RT, "O,N,L,Y" (4 EA)
MM 3.368 RT, ARROW (1 EA)
MM 3.383 RT, "O,N,L,Y" (4 EA)
MM 3.398 RT, ARROW (1 EA)

TEMPORARY LETTER OR SYMBOL, PAINT

CLARENDON (NORTHBOUND):
MM 3.162 RT, "S,I,G,N,A,L" (6 EA)
MM 3.162 LT, "S,I,G,N,A,L" (6 EA)
MM 3.169 RT, "A,H,E,A,D" (5 EA)
MM 3.169 LT, "A,H,E,A,D" (5 EA)
MM 3.253 RT, ARROW (1 EA)
MM 3.253 LT, ARROW (1 EA)
MM 3.266 RT, "O,N,L,Y" (4 EA)
MM 3.266 LT, "O,N,L,Y" (4 EA)
MM 3.277 RT, ARROW (1 EA)
MM 3.277 LT, ARROW (1 EA)
MM 3.288 RT, "O,N,L,Y" (4 EA)
MM 3.288 LT, "O,N,L,Y" (4 EA)
MM 3.299 RT, ARROW (1 EA)
MM 3.299 LT, ARROW (1 EA)

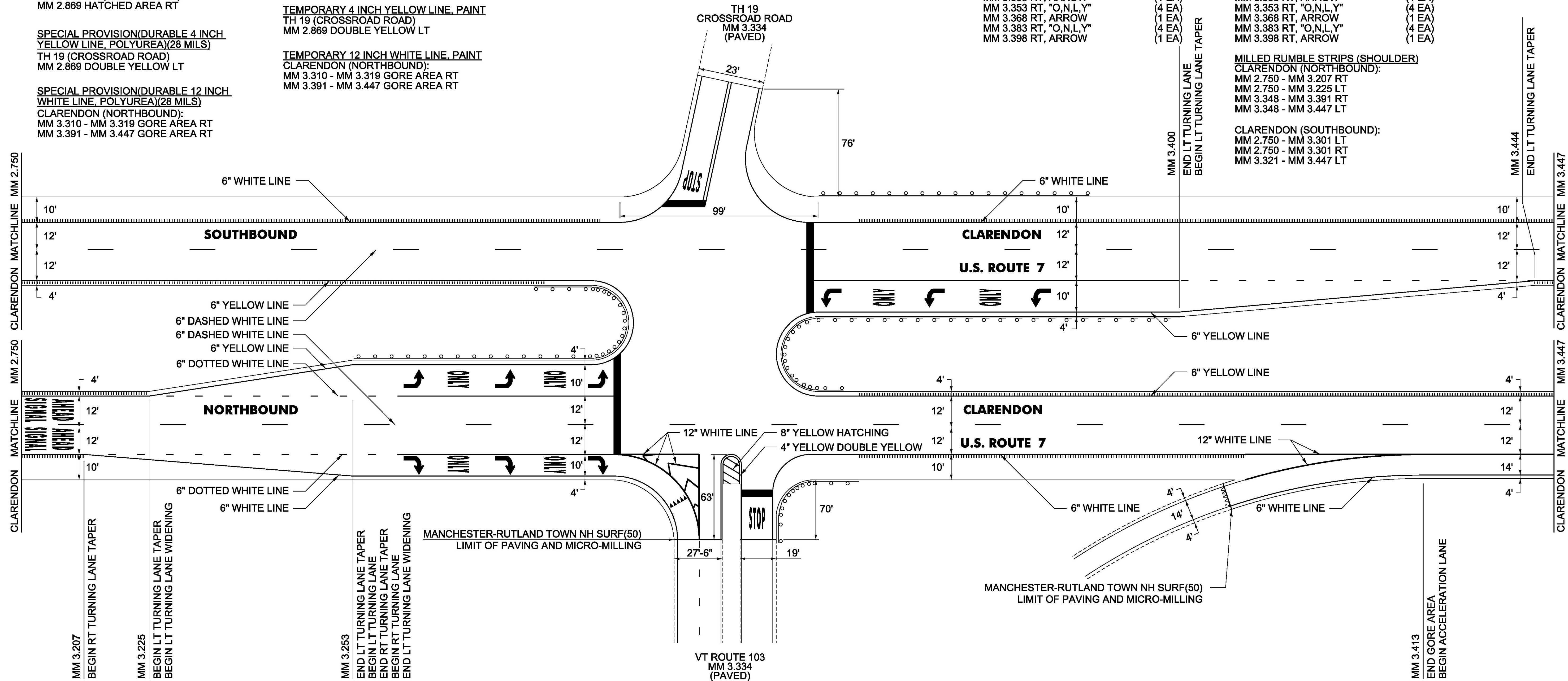
VT ROUTE 103:
MM 3.321 RT, YIELDING MARKERS (5 EA)
MM 3.330 RT, "S,T,O,P" (4 EA)

CLARENDON (SOUTHBOUND):
MM 3.319 LT, "S,T,O,P" (4 EA)
MM 3.338 RT, ARROW (1 EA)
MM 3.353 RT, "O,N,L,Y" (4 EA)
MM 3.368 RT, ARROW (1 EA)
MM 3.383 RT, "O,N,L,Y" (4 EA)
MM 3.398 RT, ARROW (1 EA)

MILLED RUMBLE STRIPS (SHOULDER)

CLARENDON (NORTHBOUND):
MM 2.750 - MM 3.207 RT
MM 2.750 - MM 3.225 LT
MM 3.348 - MM 3.391 RT
MM 3.348 - MM 3.447 LT

CLARENDON (SOUTHBOUND):
MM 2.750 - MM 3.301 LT
MM 2.750 - MM 3.301 RT
MM 3.321 - MM 3.447 LT



NOT TO SCALE

PROJECT NAME:	MANCHESTER-RUTLAND TOWN
PROJECT NUMBER:	NH SURF(50)
FILE NAME:	layout57.dgn
PROJECT LEADER:	M. FOWLER
DESIGNED BY:	B. KIPP
PLAN SHEET	57
PLOT DATE:	1/14/2016
DRAWN BY:	B. KIPP
CHECKED BY:	M. FOWLER
SHEET	71 OF 105