

SPECIAL PROVISION(DURABLE 6 INCH WHITE LINE, POLYUREA)(28 MILS)
 CLARENDON (US ROUTE 7):
 MM 0.500 - MM 1.000 SOLID EDGE LINE RT (NORTHBOUND)
 MM 0.500 - MM 1.000 DASHED CL (NORTHBOUND)
 MM 0.500 - MM 1.000 DASHED CL (SOUTHBOUND)
 MM 0.500 - MM 0.744 SOLID EDGE LINE LT (SOUTHBOUND)
 MM 0.762 - MM 1.000 SOLID EDGE LINE LT (SOUTHBOUND)
 MM 0.762 - MM 0.803 SOLID LANE LINE LT (SOUTHBOUND)
 MM 0.803 - MM 0.852 DOTTED LANE LINE LT (SOUTHBOUND)

VT ROUTE 7B:
 MM 0.736 SOLID EDGE LINE RT & LT (MEDIAN)

TEMPORARY 6 INCH WHITE LINE, PAINT
 CLARENDON (US ROUTE 7):
 MM 0.500 - MM 1.000 SOLID EDGE LINE RT (NORTHBOUND)
 MM 0.500 - MM 1.000 DASHED CL (NORTHBOUND)
 MM 0.500 - MM 1.000 DASHED CL (SOUTHBOUND)
 MM 0.500 - MM 0.744 SOLID EDGE LINE LT (SOUTHBOUND)
 MM 0.762 - MM 1.000 SOLID EDGE LINE LT (SOUTHBOUND)
 MM 0.762 - MM 0.803 SOLID LANE LINE LT (SOUTHBOUND)
 MM 0.803 - MM 0.852 DOTTED LANE LINE LT (SOUTHBOUND)

VT ROUTE 7B:
 MM 0.736 SOLID EDGE LINE RT & LT (MEDIAN)

SPECIAL PROVISION(DURABLE 6 INCH YELLOW LINE, POLYUREA)(28 MILS)
 CLARENDON (US ROUTE 7):
 MM 0.500 - MM 0.733 SOLID EDGE LINE LT (NORTHBOUND)
 MM 0.746 - MM 1.000 SOLID EDGE LINE LT (NORTHBOUND)
 MM 0.500 - MM 0.744 SOLID EDGE LINE RT (SOUTHBOUND)
 MM 0.762 - MM 1.000 SOLID EDGE LINE RT (SOUTHBOUND)

VT ROUTE 7B:
 MM 0.736 SOLID RT & LT (MEDIAN)

TEMPORARY 6 INCH YELLOW LINE, PAINT
 CLARENDON (US ROUTE 7):
 MM 0.500 - MM 0.733 SOLID EDGE LINE LT (NORTHBOUND)
 MM 0.746 - MM 1.000 SOLID EDGE LINE LT (NORTHBOUND)
 MM 0.500 - MM 0.744 SOLID EDGE LINE RT (SOUTHBOUND)
 MM 0.762 - MM 1.000 SOLID EDGE LINE RT (SOUTHBOUND)

VT ROUTE 7B:
 MM 0.736 SOLID RT & LT (MEDIAN)

SPECIAL PROVISION(DURABLE 24 INCH STOP BAR, POLYUREA)(28 MILS)

VT ROUTE 7B:
 MM 0.752 LT (SOUTHBOUND, US 7)
 MM 0.752 RT (SOUTHBOUND, US 7)
 MM 0.752 LT (NORTHBOUND, US 7)

TEMPORARY 24 INCH STOP BAR, PAINT

VT ROUTE 7B:
 MM 0.752 LT (SOUTHBOUND, US 7)
 MM 0.752 RT (SOUTHBOUND, US 7)
 MM 0.752 LT (NORTHBOUND, US 7)

SPECIAL PROVISION(DURABLE 4 INCH WHITE LINE, POLYUREA)(28 MILS)
 VT ROUTE 7B:
 MM 0.736 SOLID RT & LT

TEMPORARY 4 INCH WHITE LINE, PAINT
 VT ROUTE 7B:
 MM 0.736 SOLID RT & LT

SPECIAL PROVISION(DURABLE 4 INCH YELLOW LINE, POLYUREA)(28 MILS)
 VT ROUTE 7B:
 MM 0.736 SOLID RT & LT

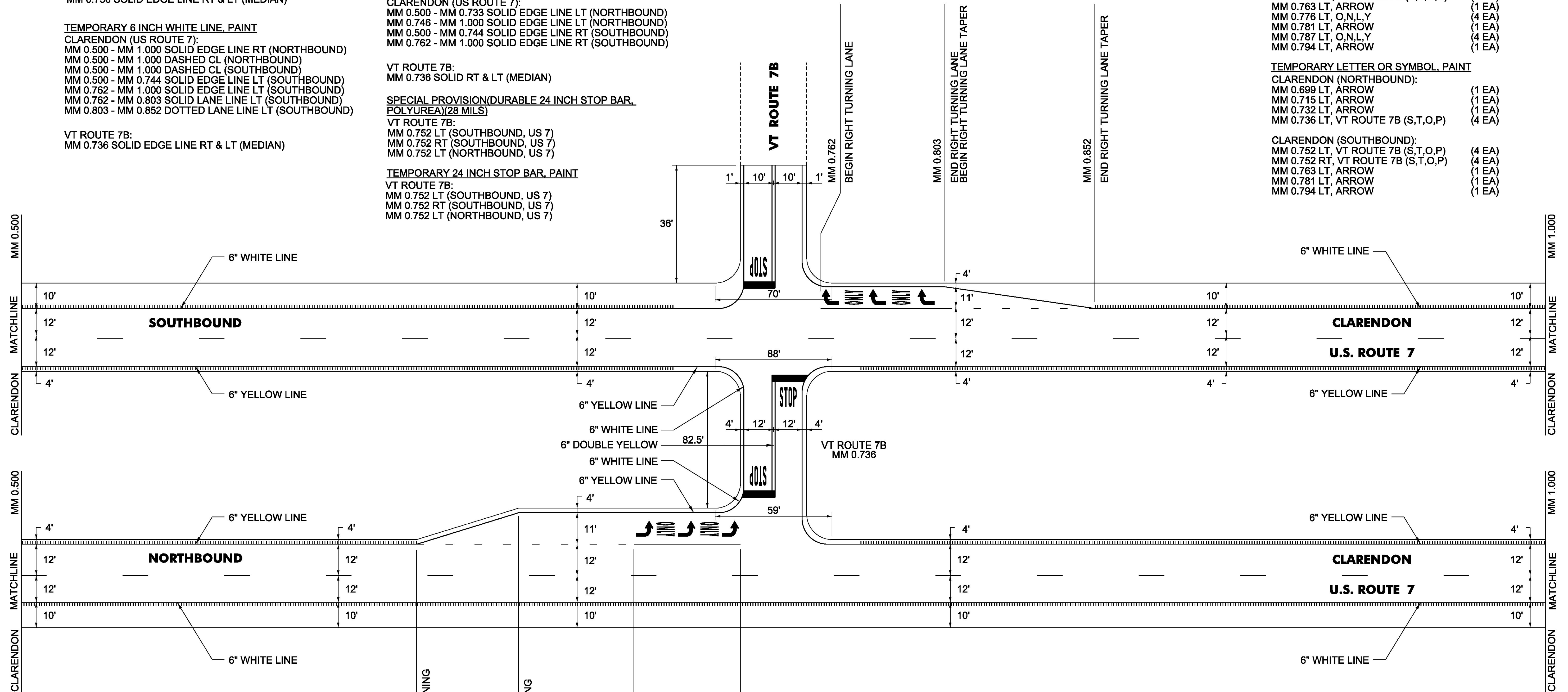
TEMPORARY 4 INCH YELLOW LINE, PAINT
 VT ROUTE 7B:
 MM 0.736 SOLID RT & LT

SPECIAL PROVISION(DURABLE LETTER OR SYMBOL, POLYUREA)(28 MILS)
 CLARENDON (NORTHBOUND):
 MM 0.699 LT, ARROW (1 EA)
 MM 0.707 LT, O,N,L,Y (4 EA)
 MM 0.715 LT, ARROW (1 EA)
 MM 0.724 LT, O,N,L,Y (4 EA)
 MM 0.732 LT, ARROW (1 EA)
 MM 0.736 LT, VT ROUTE 7B (S,T,O,P) (4 EA)

CLARENDON (SOUTHBOUND):
 MM 0.752 LT, VT ROUTE 7B (S,T,O,P) (4 EA)
 MM 0.752 RT, VT ROUTE 7B (S,T,O,P) (4 EA)
 MM 0.763 LT, ARROW (1 EA)
 MM 0.776 LT, O,N,L,Y (4 EA)
 MM 0.781 LT, ARROW (1 EA)
 MM 0.787 LT, O,N,L,Y (4 EA)
 MM 0.794 LT, ARROW (1 EA)

TEMPORARY LETTER OR SYMBOL, PAINT
 CLARENDON (NORTHBOUND):
 MM 0.699 LT, ARROW (1 EA)
 MM 0.715 LT, ARROW (1 EA)
 MM 0.732 LT, ARROW (1 EA)
 MM 0.736 LT, VT ROUTE 7B (S,T,O,P) (4 EA)

CLARENDON (SOUTHBOUND):
 MM 0.752 LT, VT ROUTE 7B (S,T,O,P) (4 EA)
 MM 0.752 RT, VT ROUTE 7B (S,T,O,P) (4 EA)
 MM 0.763 LT, ARROW (1 EA)
 MM 0.781 LT, ARROW (1 EA)
 MM 0.794 LT, ARROW (1 EA)



MILLED RUMBLE STRIPS (SHOULDER)
 CLARENDON:
 MM 0.500 - MM 0.630 LT (NORTHBOUND)
 MM 0.500 - MM 1.000 RT (NORTHBOUND)
 MM 0.500 - MM 0.738 LT (SOUTHBOUND)
 MM 0.500 - MM 0.737 RT (SOUTHBOUND)
 MM 0.750 - MM 1.000 LT (NORTHBOUND)
 MM 0.765 - MM 1.000 RT (SOUTHBOUND)
 MM 0.852 - MM 1.000 LT (SOUTHBOUND)

MM 0.630
 BEGIN LEFT TURNING LANE WIDENING

MM 0.663
 END LEFT TURNING LANE WIDENING

MM 0.701
 BEGIN LEFT TURNING LANE

MM 0.738
 END LEFT TURNING LANE

NOT TO SCALE

PROJECT NAME:	MANCHESTER-RUTLAND TOWN
PROJECT NUMBER:	NH SURF(50)
FILE NAME:	layout52.dgn
PROJECT LEADER:	M. FOWLER
DESIGNED BY:	B. KIPP
PLAN SHEET	52
PLOT DATE:	1/14/2016
DRAWN BY:	N. PAPPAS
CHECKED BY:	M. FOWLER
SHEET	66 OF 105