

SPECIAL PROVISION(DURABLE 6 INCH WHITE LINE, POLYUREA)(28 MILS)

US ROUTE 7:  
70+00 TO 79+00 SOLID RT & LT  
70+00 TO 79+00 DASHED LT  
72+40 TO 79+00 DASHED RT  
78+40 TO 79+00 DOTTED RT

TEMPORARY 6 INCH WHITE LINE, PAINT

US ROUTE 7:  
70+00 TO 79+00 SOLID RT & LT  
70+00 TO 79+00 DASHED LT  
72+40 TO 79+00 DASHED RT  
78+40 TO 79+00 DOTTED RT

SPECIAL PROVISION(DURABLE 6 INCH YELLOW LINE, POLYUREA)(28 MILS)

US ROUTE 7:  
70+00 TO 70+40 SOLID RT & LT  
70+40 TO 79+00 DOUBLE SOLID MEDIAN RT & LT

TEMPORARY 6 INCH YELLOW LINE, PAINT

US ROUTE 7:  
70+00 TO 70+40 SOLID RT & LT  
70+40 TO 79+00 DOUBLE SOLID MEDIAN RT & LT

SPECIAL PROVISION(DURABLE 12 INCH YELLOW LINE, POLYUREA)(28 MILS)

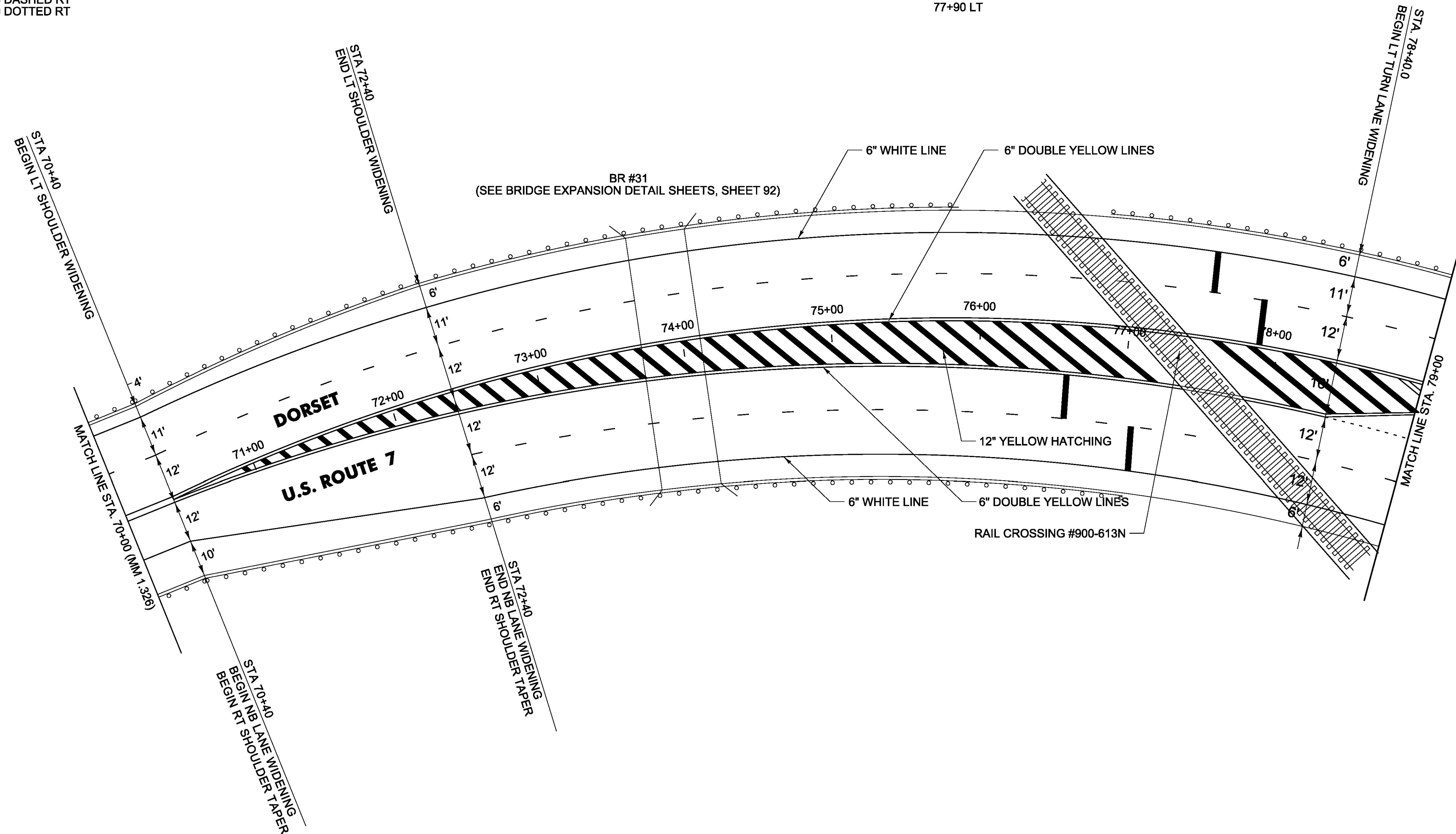
US ROUTE 7:  
70+40 TO 79+00 DOUBLE HATCHED MEDIAN RT & LT

SPECIAL PROVISION(DURABLE 24 INCH STOP BAR, POLYUREA)(28 MILS)

US ROUTE 7:  
76+60 RT  
77+05 RT  
77+50 LT  
77+90 LT

TEMPORARY 24 INCH STOP BAR, PAINT

US ROUTE 7:  
76+60 RT  
77+05 RT  
77+50 LT  
77+90 LT



NOT TO SCALE

PROJECT NAME:	MANCHESTER-RUTLAND TOWN
PROJECT NUMBER:	NH SURF(50)
FILE NAME:	layout11.dgn
PROJECT LEADER:	M. FOWLER
DESIGNED BY:	B. KIPP
PLAN SHEET II	
PLOT DATE:	1/14/2016
DRAWN BY:	B. KIPP
CHECKED BY:	M. FOWLER
SHEET	25 OF 105