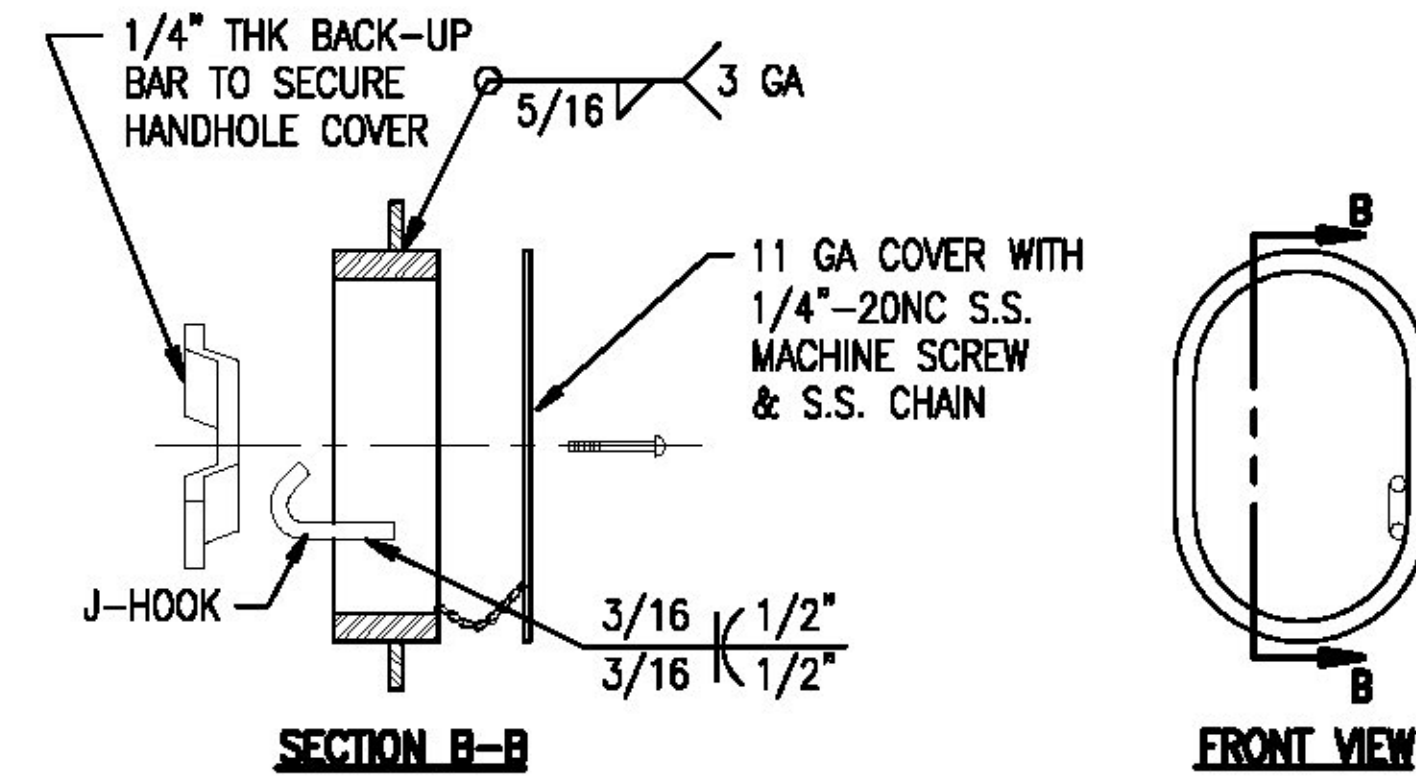
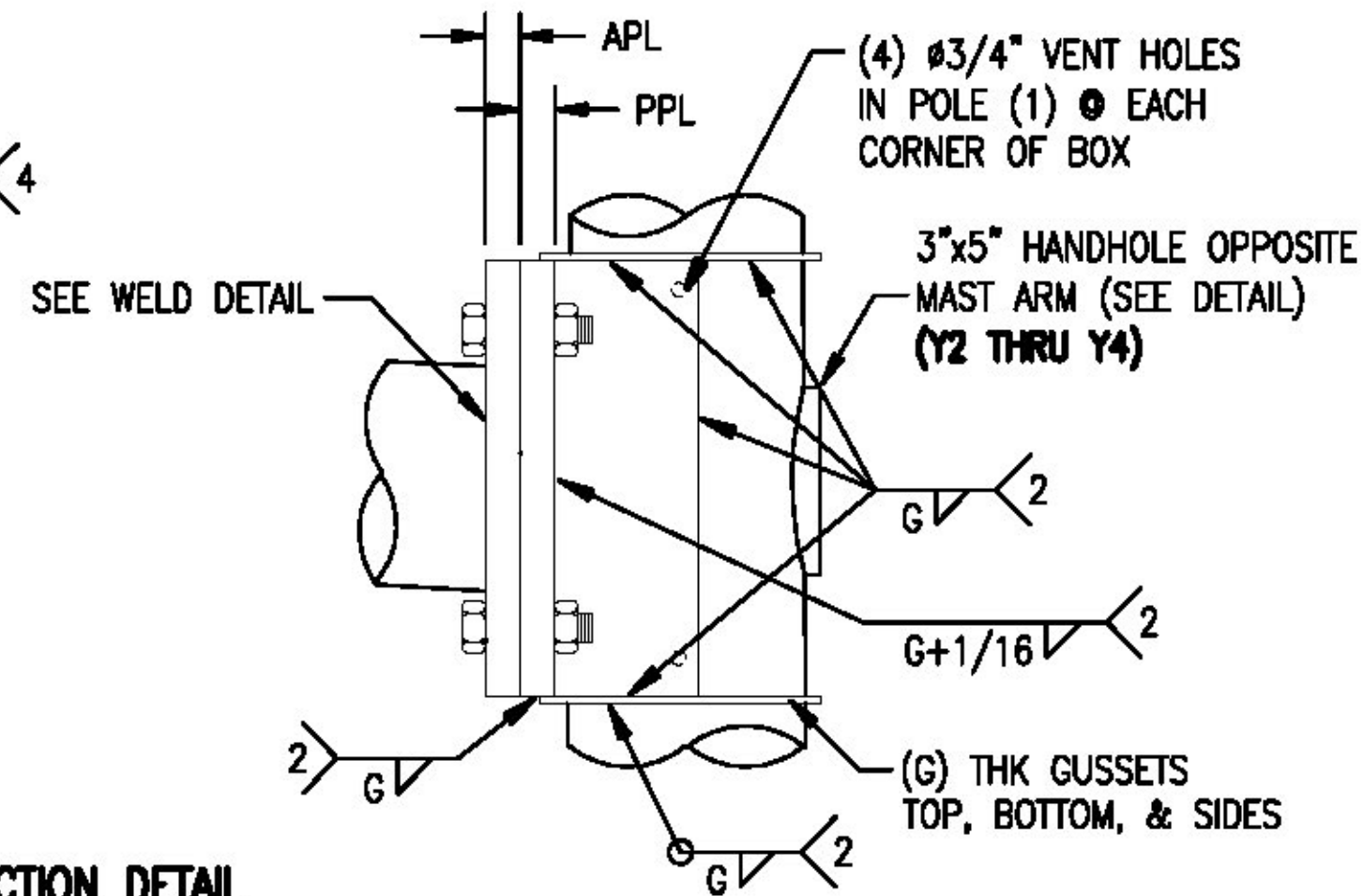
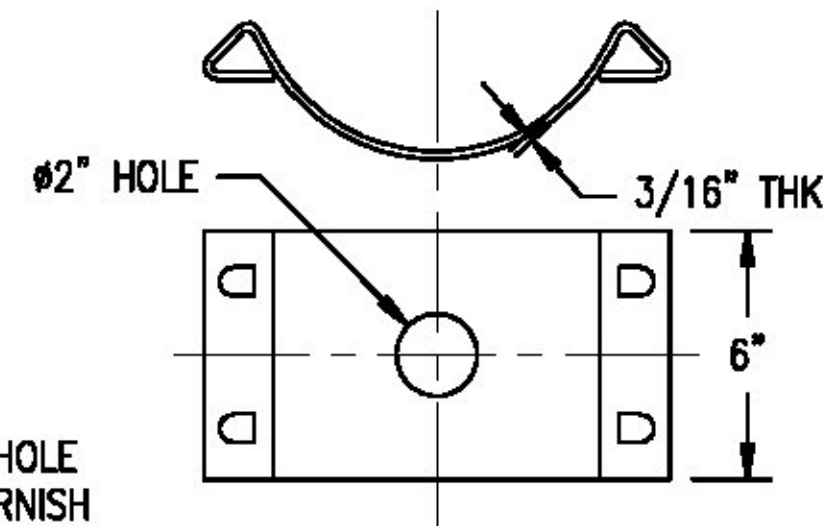
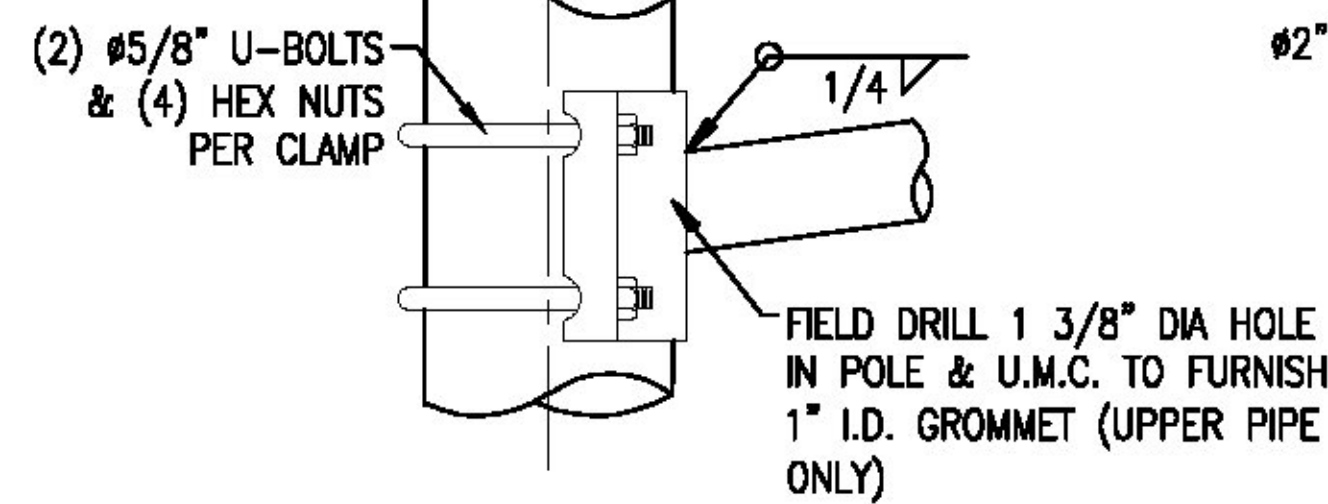


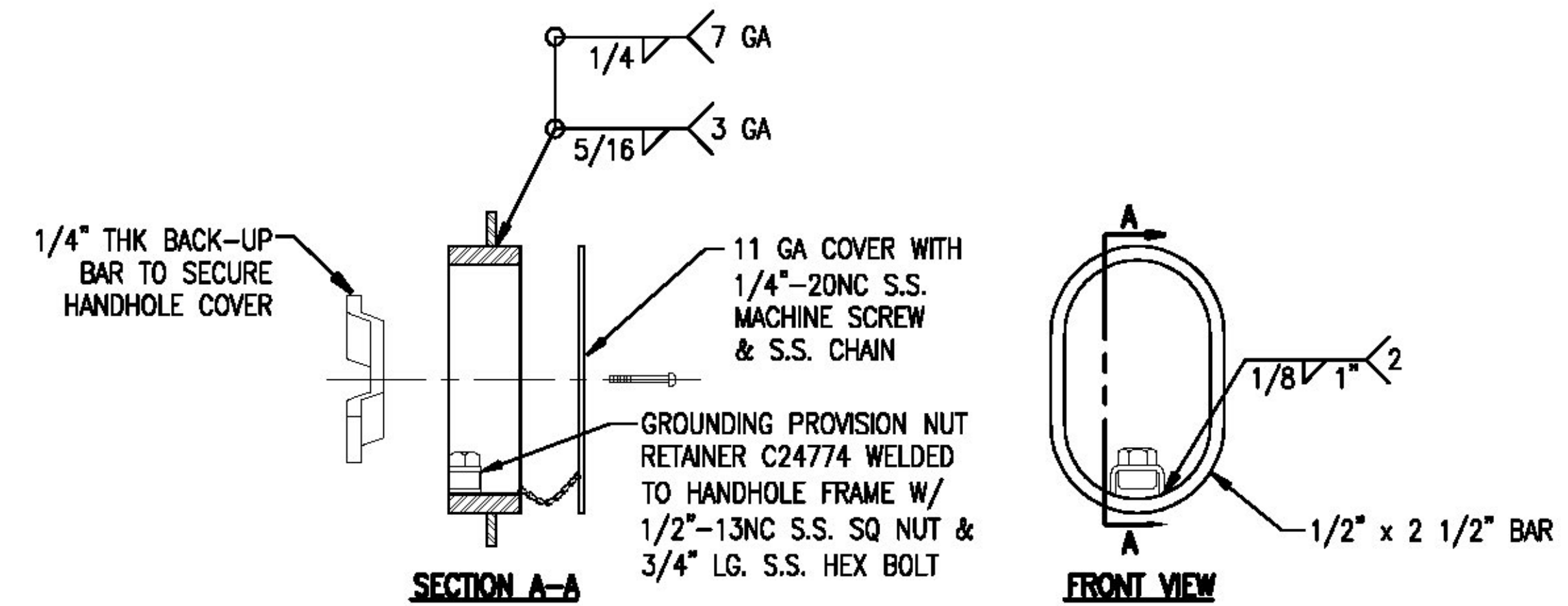
MAST ARM CONNECTION DETAIL



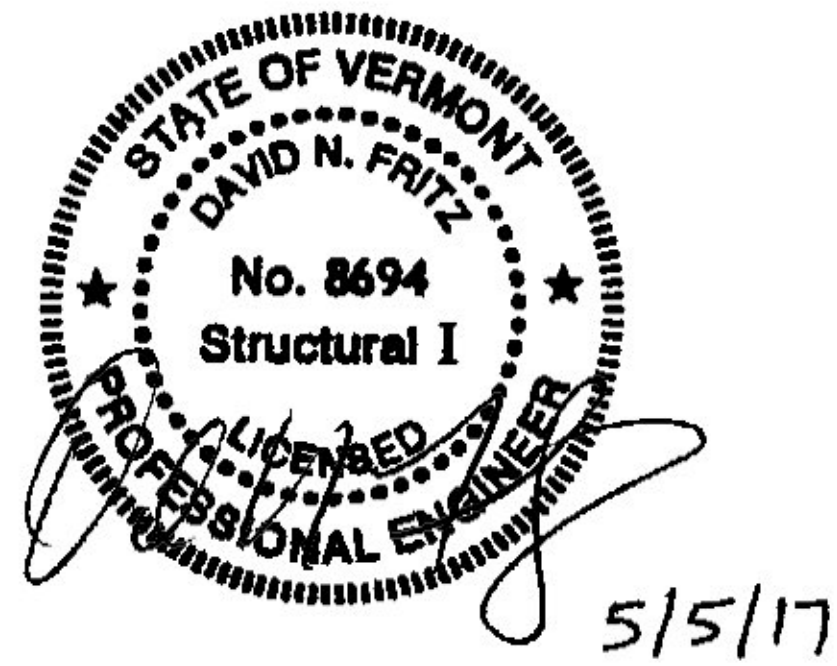
3"x5" UPPER HANDHOLE FRAME DETAIL (Y2 THRU Y4 ONLY)



LUMINAIRE ARM CONNECTION DETAIL (REF B85 SERIES)



4"x6 1/2" LOWER HANDHOLE FRAME DETAIL



STATE: VT	REQ / SO# : DVT-0810-2	REV	DESCRIPTION	DATE	REV BY/CHK BY
PROJECT NAME: PROJ. NO. NHG-019-3(60)		REVISIONS			
ROUND TAPERED STEEL TRAFFIC CONTROL STRUCTURES RUTLAND, VERMONT					
	This document and the contents herein are proprietary and the property of Union Metal Corporation. This document is not to be copied, reproduced, or used for any reason except for the purpose which it was issued without the express written consent of Union Metal Corporation. Furthermore, Union Metal Corporation reserves the right to recall this document and all copies at any time for any reason.	DESIGNED BY	CHECKED BY	DATE	SCALE
		JEF	JAD	4/21/17	NTS
50400-B775				ENG REF	50400-B775
				REVISION	SHEET
				RO	3 of 3