

**TRAFFIC CONTROL SIGNAL SYSTEM, INTERSECTION**

SEE LIST OF MAJOR EQUIPMENT,  
TRAFFIC SIGNAL INFORMATION SHEET

**MAST ARM POLES**

MAP-1 = STA. 201+45.09, LT 37.51'  
MAP-2 = STA. 44+90.75, RT 50.53'  
MAP-3 = STA. 43+95.10, LT 46.97'  
MAP-4 = STA. 600+51.68, RT 27.55'

**PEDESTRIAN PEDESTAL POSTS**

PP-1 = STA. 44+77.62, RT 48.93'  
PP-2 = STA. 44+04.10, LT 52.48'  
PP-3 = STA. 43+92.22, RT 52.86'

**CONTROLLER CABINET (GROUND-MOUNTED)**

STA. 44+94.50, RT 52.69' 45+04.18, RT 54.14'

**PEDESTRIAN SIGNAL HEADS**

STA. 43+92.22, RT 52.86'  
STA. 43+95.10, LT 46.97'  
STA. 44+04.10, LT 52.48'  
STA. 44+29.45, RT 51.45' 44+20.46, RT 51.14'  
STA. 44+77.62, RT 48.93'  
STA. 44+86.97, LT 54.59'

**SPECIAL PROVISION (JUNCTION BOX, HEAVY DUTY)**

JB-1 = STA. 45+01.98, LT 49.51' 45+12.96, RT 53.01'  
JB-2 = STA. 45+08.09, RT 63.17' 45+10.59, RT 72.45'  
JB-3 = STA. 44+07.15, LT 56.86' 44+05.94, RT 56.87'  
JB-4 = STA. 44+27.05, RT 59.29' 44+23.42, RT 66.11'  
JB-5 = STA. 43+77.92, RT 43.98'

**WIRED CONDUIT**

SEE TRAFFIC SIGNAL  
INFORMATION SHEET

**ELECTRICAL CONDUIT**

SEE TRAFFIC SIGNAL  
INFORMATION SHEET

**SPECIAL PROVISION (HORIZONTAL DIRECTIONAL DRILLING)(10" CASING PIPE)**

STA. 44+14.74, LT 56.54' - STA. 44+90.95, LT 51.03' (79)  
STA. 44+27.96, RT 59.25' - STA. 44+70.11, RT 61.87' (42)  
STA. 45+03.20, LT 47.99' - STA. 45+04.17, RT 50.47' (98)

**SPECIAL PROVISION (LUMINAIRE, LED) (MAST ARM POLE MOUNTED)**

STA. 201+45.09, LT 37.51' (MAP-1)  
STA. 44+90.75, RT 50.52' (MAP-2)  
STA. 43+95.10, LT 46.97' (MAP-3)

**BRACKET ARM (MAST ARM POLE MOUNTED)**

STA. 201+45.09, LT 37.51' (MAP-1)  
STA. 44+90.75, RT 50.52' (MAP-2)  
STA. 43+95.10, LT 46.97' (MAP-3)

**REMOVAL OF EXISTING TRAFFIC CONTROL SIGNAL SYSTEM**

**REMOVE EXISTING STRAIN POLES**

STA. 44+00.13, LT  
STA. 44+83.29, RT

**REMOVE EXISTING SPAN WIRE**

STA. 44+00.13, LT - STA. 44+83.29, RT

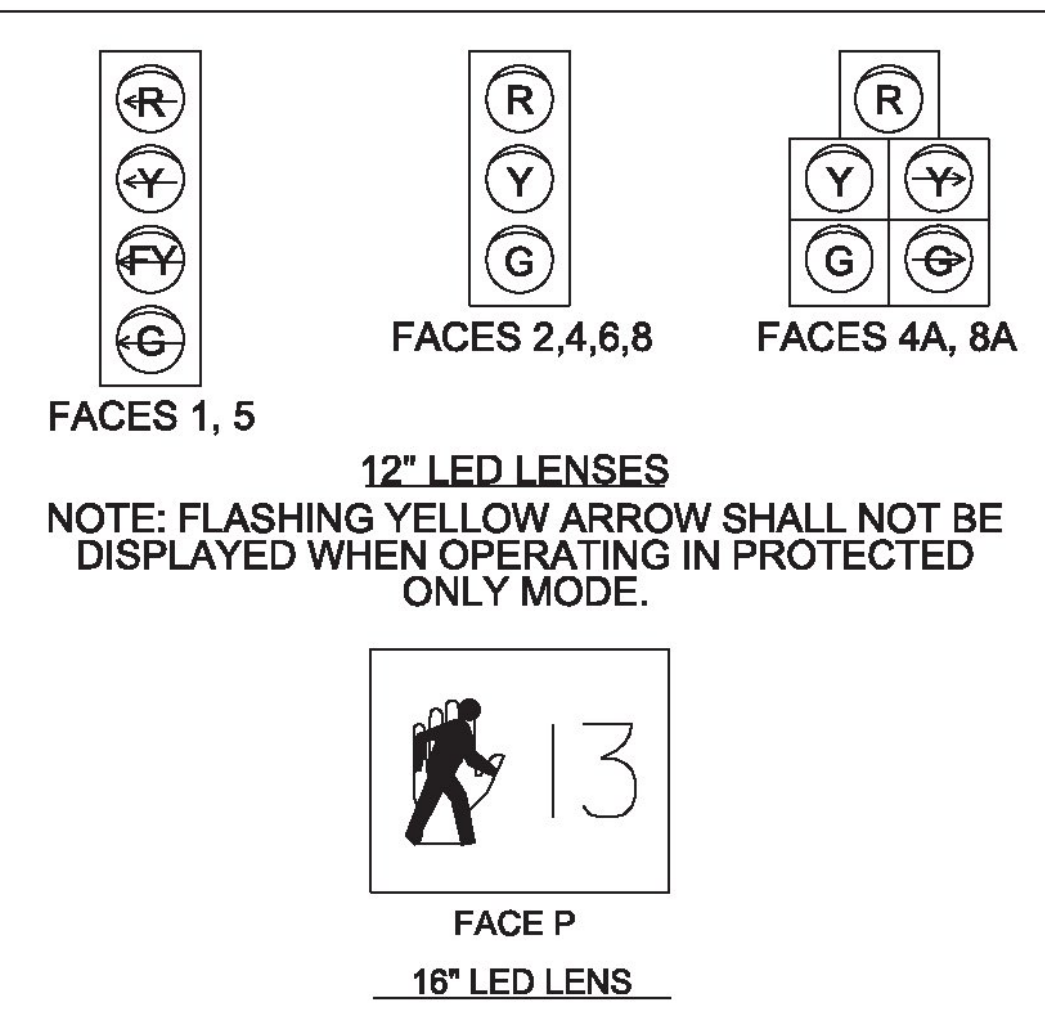
**REMOVE EXISTING SIGNAL CONTROLLER CABINET**

STA. 44+94.50, RT

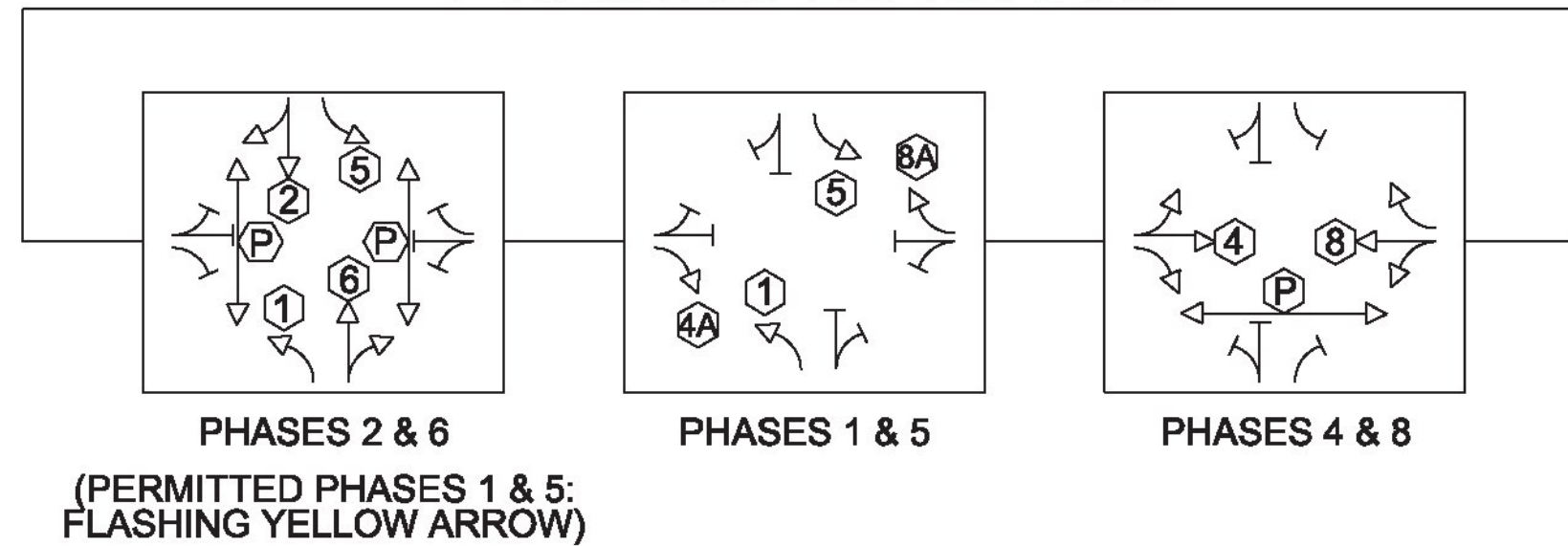
**SPECIAL PROVISION (HORIZONTAL DIRECTIONAL DRILLING)(10" CASING PIPE)**

STA. 43+78.00, RT 39.13' - STA. 43+79.09, LT 42.90' (88)  
STA. 44+28.61, RT 66.39' - STA. 44+69.19, RT 37.98' (48)  
STA. 45+11.01, RT 48.48' - STA. 45+12.87, LT 47.88' (98)

**PROPOSED SIGNAL  
FACE ARRANGEMENTS**



**PHASING DIAGRAM**



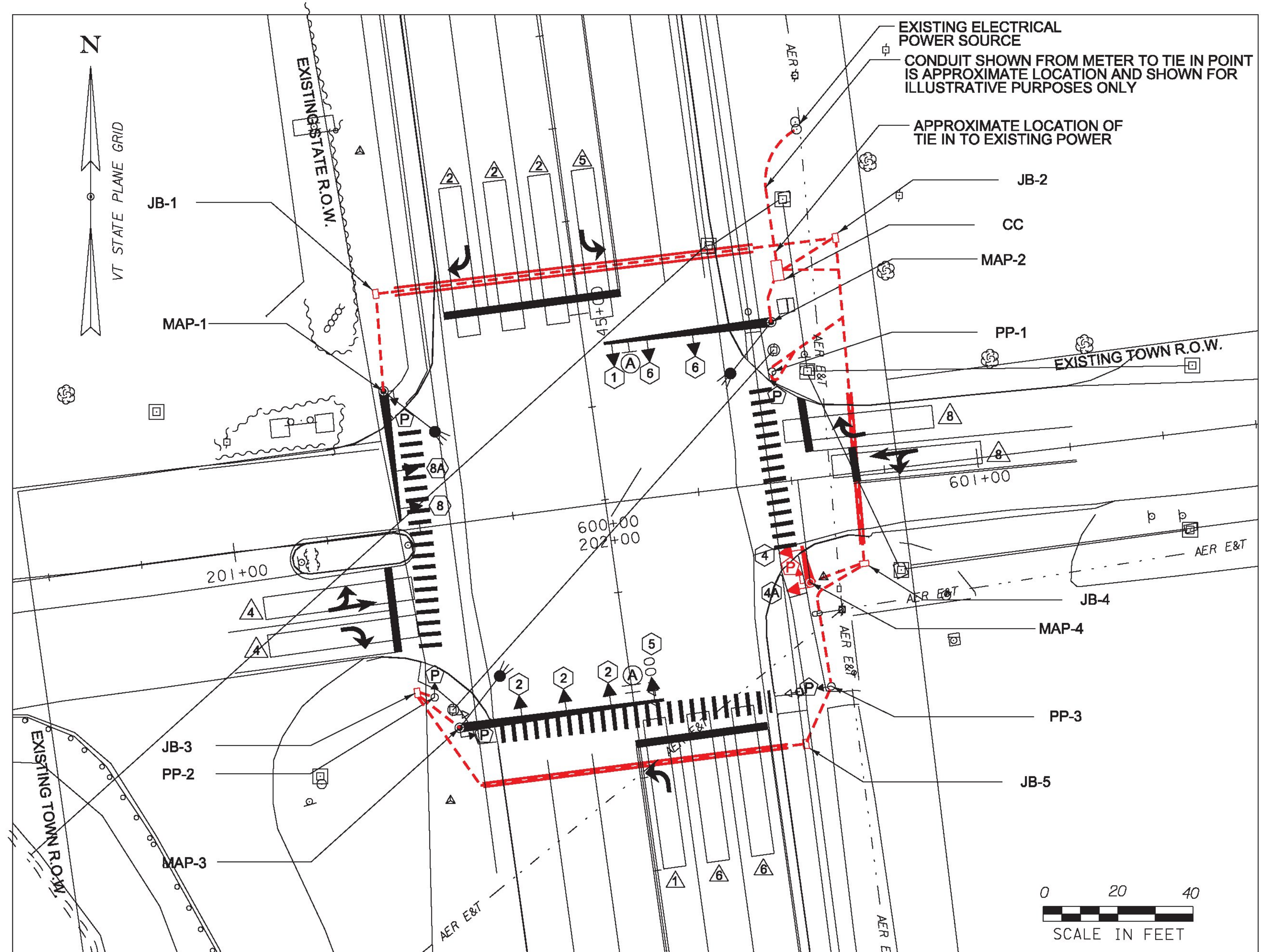
**SIGN DETAIL**



**NOTES:**

- CALL DIG SAFE PRIOR TO PERFORMING ANY EXCAVATION WORK. 1-888-DIG-SAFE
- ALL EXISTING PAVEMENT MARKINGS AND SIGNS TO REMAIN UNLESS OTHERWISE NOTED.
- PAVEMENT MARKINGS ARE NOT PROPOSED WITH THIS PROJECT BUT ARE SHOWN FOR LOCATION PURPOSES ONLY.
- AREAS NEEDING TURF RE-ESTABLISHMENT WILL REQUIRE 4 INCHES MINIMUM OF TOPSOIL APPLICATION.
- REMOVAL OF EXISTING TRAFFIC SIGNAL SYSTEM SHALL NOT OCCUR UNTIL THE PROPOSED SYSTEM IS CONSTRUCTED AND OPERATIONAL.
- REMOVAL OF EXISTING TRAFFIC SIGNAL SYSTEM WILL BE PAID UNDER ITEM NUMBER 678.45- REMOVAL OF EXISTING TRAFFIC CONTROL SIGNAL SYSTEM.
- EXISTING SIGNAL CONTROLLER, MALFUNCTION MANAGEMENT UNIT, DETECTION EQUIPMENT, AND SIGNAL HEADS WILL REMAIN THE PROPERTY OF THE STATE AND WILL BE SALVAGED TO MENDON TRAFFIC SHOP, 84 US 4, MENDON, VT 05701. COORDINATE MATERIAL TRANSFER WITH VTRANS SIGNAL TECH STEVE GUYETTE, (802)655-1580.
- SEWER LINE AT STATION 45+03.00, RT IS APPROXIMATELY 8 FEET BELOW FINISHED GRADE.
- DRAINAGE PIPE AT STATION 45+03.00, RT IS APPROXIMATELY 10 FEET BELOW FINISHED GRADE.
- WATER LINE AT STATION 45+02.00, LT IS APPROXIMATELY 5 FEET BELOW FINISHED GRADE.
- DRAINAGE PIPE AT STATION 600+61.00, LT IS APPROXIMATELY 6 FEET BELOW FINISHED GRADE.
- EXISTING STRAIN POLE FOUNDATION SHALL BE REMOVED TO A DEPTH THAT IS A MINIMUM OF 18" BELOW FINISH GRADE.

**AS BUILT SIGNAL LAYOUT SHEET**



**LEGEND**

- MAST ARM & POLE
- CC CONTROLLER CABINET
- JB JUNCTION BOX, HEAVY DUTY
- PEDESTAL POST
- SIGNAL HEAD WITH PHASE NO.
- ⊕ PEDESTRIAN SIGNAL HEAD
- WIRED CONDUIT
- WIRED CONDUIT IN ELECTRICAL CONDUIT SLEEVE
- ⊙ MAST ARM-MOUNTED SIGN
- △ STOP BAR DETECTION AREA
- LUMINAIRE

AM	OFF	PM
81	395	390
3	4	0
22	120	166

AM	OFF	PM
27	42	31
2	14	5
10	25	32

AM	OFF	PM
25	85	851
969	826	14
28		

2014 HOURLY VOLUMES  
US ROUTE 7 & SEWARD ROAD

<b>PROJECT NAME:</b> RUTLAND TOWN	<b>PLOT DATE:</b> ****DATE***
<b>PROJECT NUMBER:</b> NHG 019-3(60)	<b>DRAWN BY:</b> ****NAME***
<b>FILE NAME:</b> ****NAME***	<b>CHECKED BY:</b> ****NAME***
<b>PROJECT LEADER:</b> ****NAME***	<b>SHEET 9 OF 17</b>
<b>DESIGNED BY:</b> ****NAME***	
<b>TRAFFIC SIGNAL LAYOUT SHEET</b>	