

BOOTHBAY SILTY LOAM  
8% TO 15% SLOPES  
K = 0.32  
HYDRO. GROUP = C

VT ROUTE 100 STA. 41+50.53  
END PROJECT  
HES 030-2(34)

CENTER OF ROUNDABOUT  
VT ROUTE 15 STA. 96+37.69 =  
VT ROUTE 100 STA. 40+00.00 (MM 0.00) =  
TH 5 STA. 63+59.48

ADAMS LOAMY FINE SAND  
8% TO 15% SLOPES  
K = 0.17  
HYDRO. GROUP = A

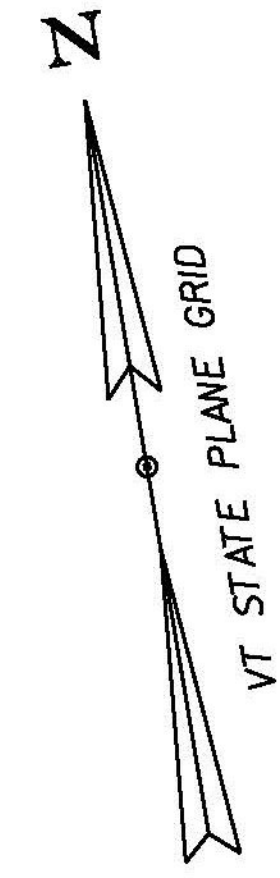
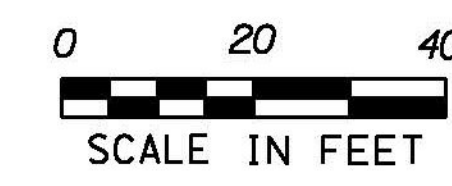
VT ROUTE 15 STA. 94+80.66  
BEGIN PROJECT  
HES 030-2(34)

VT ROUTE 15 STA. 97+80.66  
END PROJECT  
HES 030-2(34)

ADAMS LOAMY FINE SAND  
15% TO 25% SLOPES  
K = 0.17  
HYDRO. GROUP = A

T.H. 5 STA. 62+00.00  
BEGIN PROJECT  
HES 030-2(34)

ADAMS LOAMY FINE SAND  
15% TO 25% SLOPES  
K = 0.17  
HYDRO. GROUP = A



PROJECT NAME: HYDE PARK  
PROJECT NUMBER: HES 030-2(34)

FILE NAME: +14b104ero.dgn  
PROJECT LEADER: P. COBURN  
DESIGNED BY: M. BOGACZYK  
EPSC - EXISTING CONDITIONS PLAN

PLOT DATE: 11/12/2015  
DRAWN BY: M. BOGACZYK  
CHECKED BY: M. LACROIX  
SHEET 12 OF 26