

GPS CONTROL POINTS

**HVCTRL #1**

CHAUVIN

NORTH = 761053.757  
EAST = 1613842.175  
ELEV. = 619.725

GENERAL LOCATION, HYDE PARK, VT. OWNERSHIP, RAYMOND CHAUVIN, HYDE PARK, VT.  
BUSINESS ADDRESS, CCS, 138 MUNSON DRIVE, MORRISTOWN, VT.

TO REACH FROM THE INTERSECTION OF VT ROUTE 15, CHURCH STREET, AND VT ROUTE 100 GO SOUTHEAST ALONG VT ROUTE 15 FOR 0.8 MI (1.3 KM) TO THE INTERSECTION OF NORTH MAIN STREET RIGHT. CONTINUE STRAIGHT AHEAD AND GO SOUTHEAST ALONG VT ROUTE 15 TO THE INTERSECTION OF A GRAVEL DRIVE LEFT LEADING TO HOUSE NO 951. TURN LEFT AND GO NORTHEAST ALONG THE DRIVE FOR ABOUT 10 M (32.8 FT) AND THEN NORTHWEST ALONG A DIM DRIVE ON THE EDGE OF THE LAWN FOR ABOUT 30 M (98.4 FT) TO A NORTHEASTERLY BEND IN THE DRIVE. BEAR RIGHT AND GO NORTHEAST ALONG THE DRIVE FOR ABOUT 75 M (246.1 FT), PASSING BETWEEN A LARGE SLURRYSTORE SYSTEM AND THE NORTH END OF A LARGE MILKING BARN, TO THE NORTHWEST CORNER OF A CONCRETE PARKING AREA WITH CURBING AND THE SITE OF THE MARK STRAIGHT AHEAD IN THE EMBANKMENT ON THE EAST SIDE OF THE PARKING AREA. THE MARK IS SET 10 CM (4 INCHES) BELOW GROUND SURFACE IN THE TOP OF A MASSIVE ROCK OUTCROP WHICH IS COVERED WITH TOPSOIL. IT IS 9.9 M (32.5 FT) NORTHWEST OF THE SOUTHWEST CORNER OF A WOODEN EQUIPMENT SHED, 11.0 M (36.1 FT) WEST SOUTHWEST OF THE NORTHWEST CORNER OF THE SHED, 30.9 M (101.4 FT) EAST SOUTHEAST OF THE NORTHEAST CORNER OF THE MILKING BARN, 20.0 M (65.6 FT) NORTHEAST OF POLE NO 6A WITH TRANSFORMER, 20.6 M (67.6 FT) SOUTH SOUTHEAST OF AN ANGLE POINT IN THE CONCRETE CURBING, AND 11.7 M (38.4 FT) NORTHEAST OF THE SOUTH END OF THE CURB AND A FIBERGLASS WITNESS POST.

**HVCTRL #2**

FITCH

NORTH = 763896.948  
EAST = 1611039.521  
ELEV. = 731.914

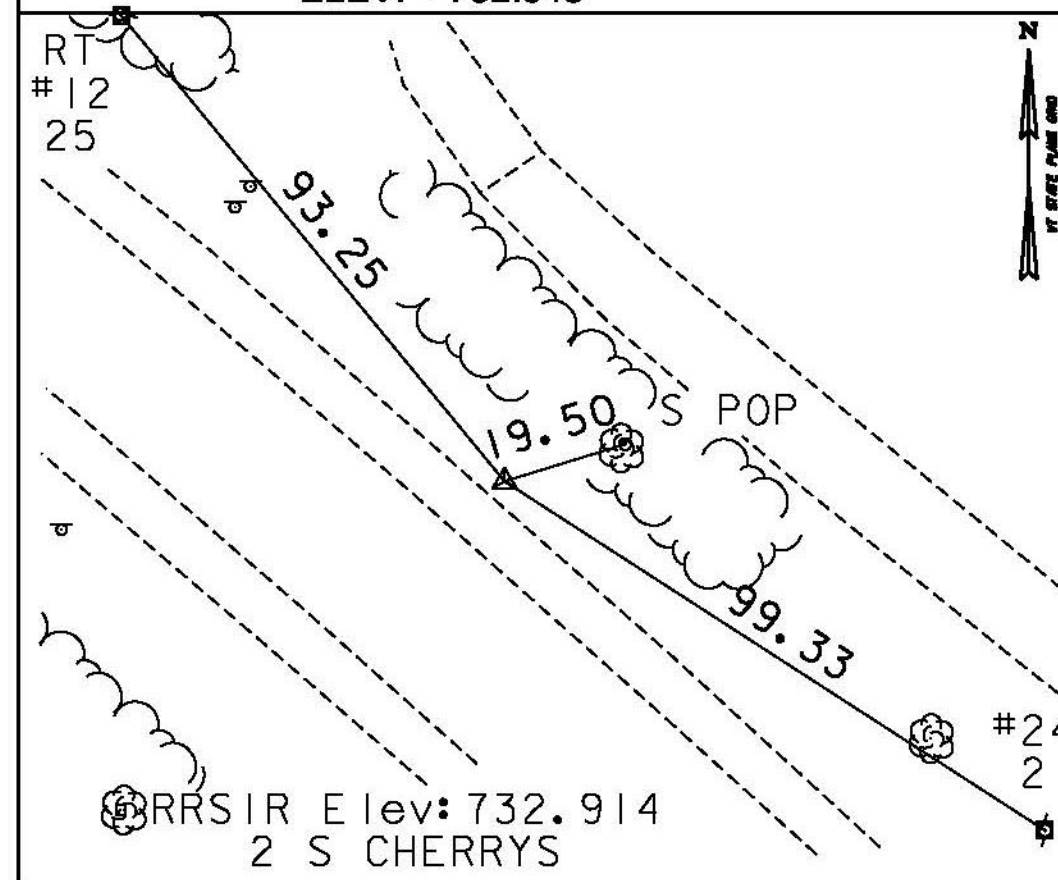
GENERAL LOCATION, HYDE PARK, VT

TO REACH FROM THE INTERSECTION OF VT ROUTE 15, CHURCH STREET, AND VT ROUTE 100 GO SOUTHEAST ALONG VT ROUTE 15 FOR 0.2 MI (0.3 KM) TO THE INTERSECTION OF EDEN STREET RIGHT AND FITCH HILL ROAD LEFT AND THE SITE OF THE MARK ON THE LEFT. THE MARK IS SET IN THE TOP OF A MASSIVE ROCK OUTCROP IN THE EAST QUADRANT OF THE INTERSECTION. IT IS 14.3 M (46.9 FT) NORTHEAST OF AND ABOUT 1.3 M (4.3 FT) HIGHER THAN THE CENTERLINE OF VT ROUTE 15, 23.6 M (77.4 FT) SOUTHEAST OF THE CENTERLINE OF FITCH HILL ROAD, 17.0 M (55.8 FT) WEST SOUTHWEST OF THE WEST CORNER OF A ONE STORY RANCH HOUSE, AND 14.2 M (46.6 FT) SOUTH SOUTHEAST OF POLE NO 21/1/RT/21/22/21/9+1/2/21-2 AND A FIBERGLASS WITNESS POST.

TRAVERSE TIES

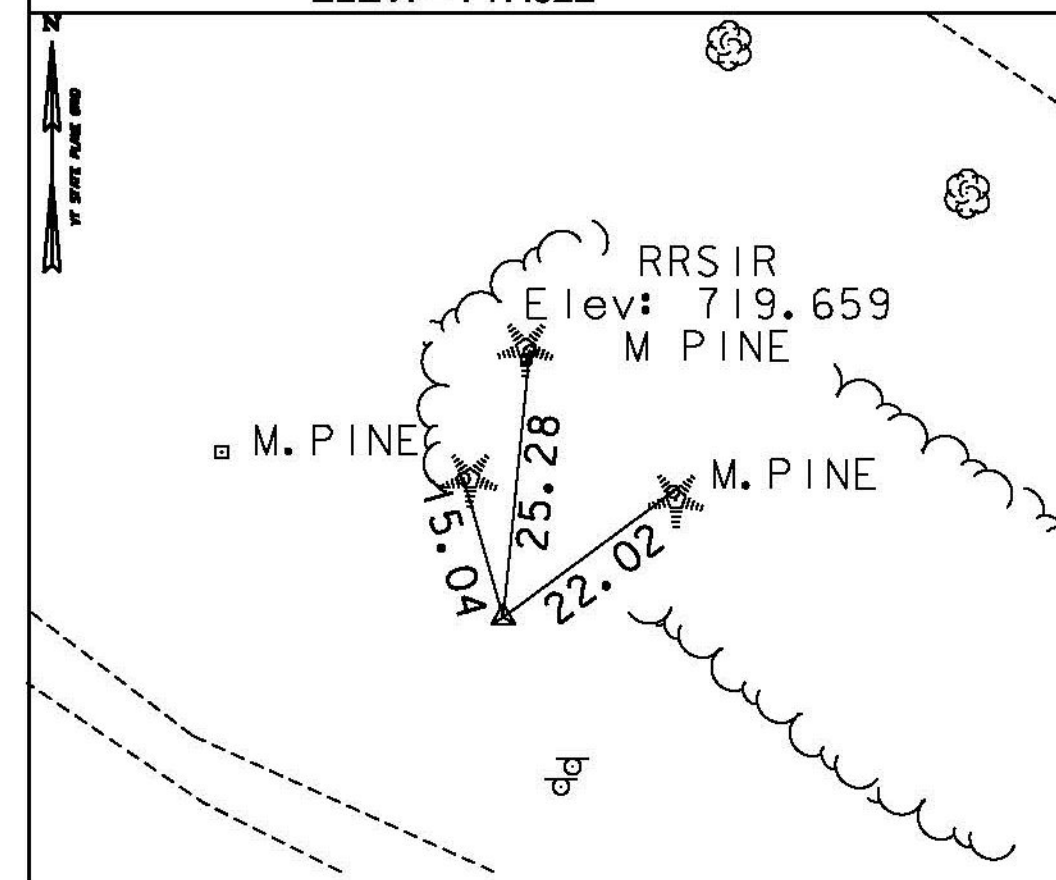
**HVCTRL #3**

NORTH = 764225.377  
EAST = 1610643.971  
ELEV. = 732.045



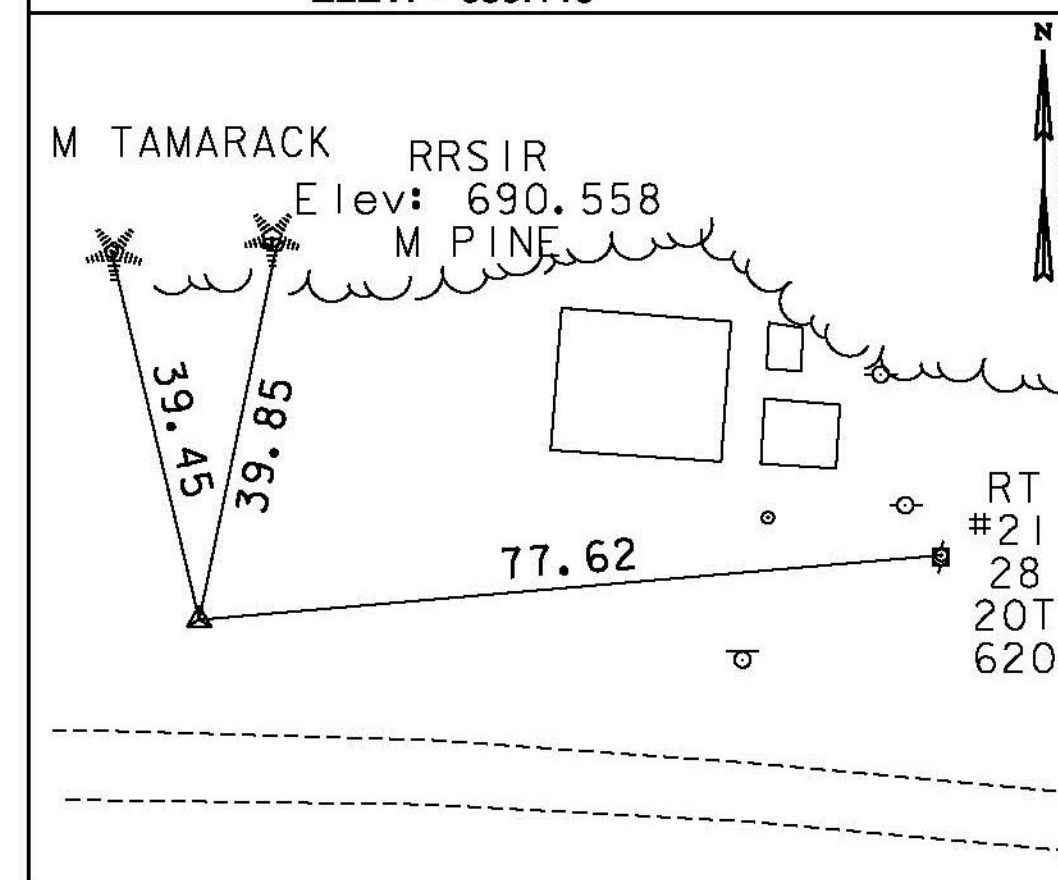
**HVCTRL #4**

NORTH = 764467.536  
EAST = 1610312.203  
ELEV. = 717.022



**HVCTRL #5**

NORTH = 764548.620  
EAST = 1609872.678  
ELEV. = 689.115



\* Main Traverse Completed 1/8/08 by R.Gilman P.C. & P.Winters

ALIGNMENT TIES

SEE SHEET 6

DATUM

VERTICAL: NAVD 88  
HORIZONTAL: NAD 83 (CONUS)  
ADJUSTMENT: COMPASS

PROJECT NAME: HYDE PARK  
PROJECT NUMBER: HES 030-2(34)

FILE NAME: t14b104frm.dgn  
PROJECT LEADER: P. COBURN  
DESIGNED BY: M. BOGACZYK  
TIE SHEET

PLOT DATE: 11/12/2015  
DRAWN BY: M. BOGACZYK  
CHECKED BY: M. LACROIX  
SHEET 5 OF 26