

GPS CONTROL POINTS

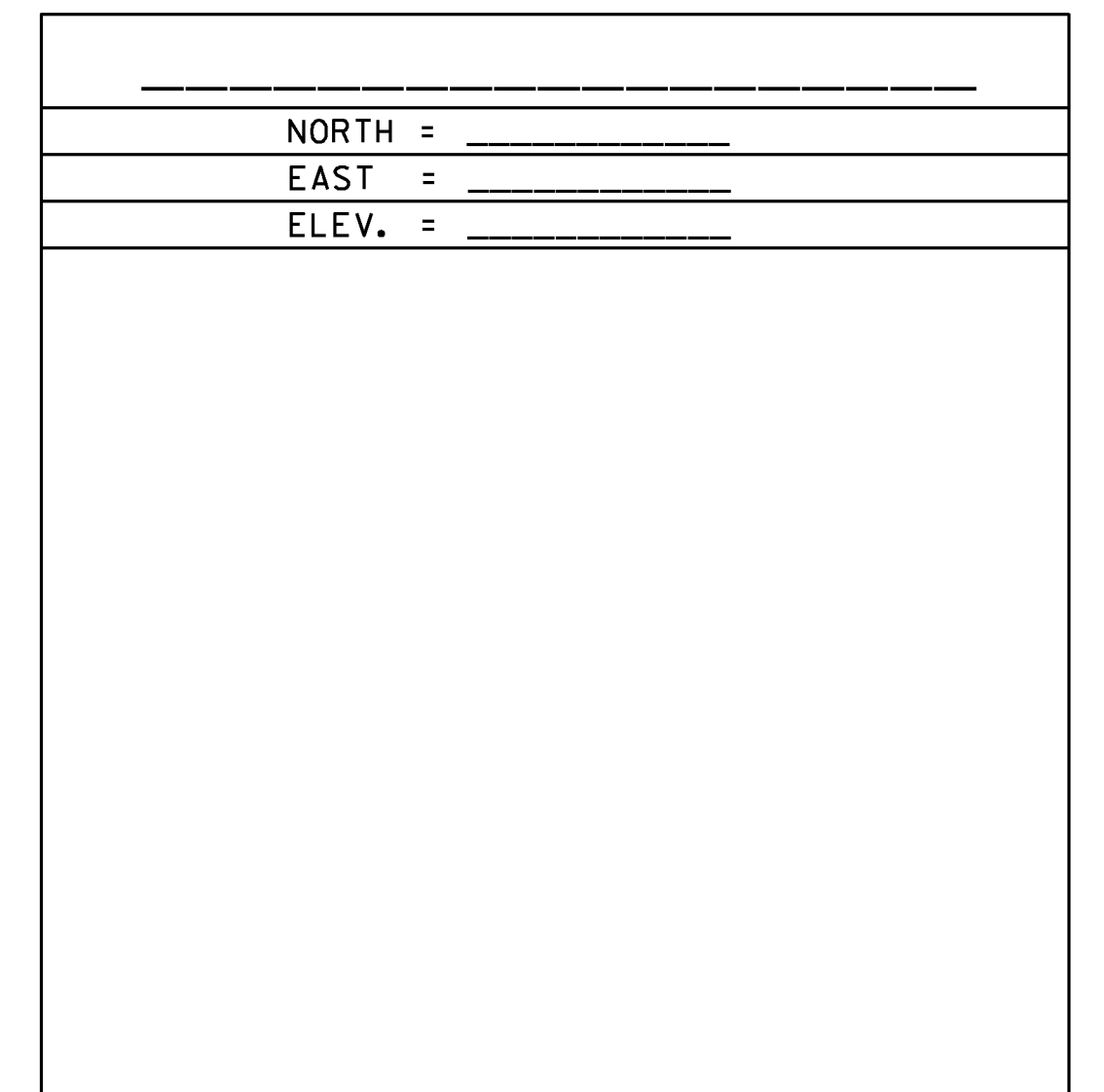
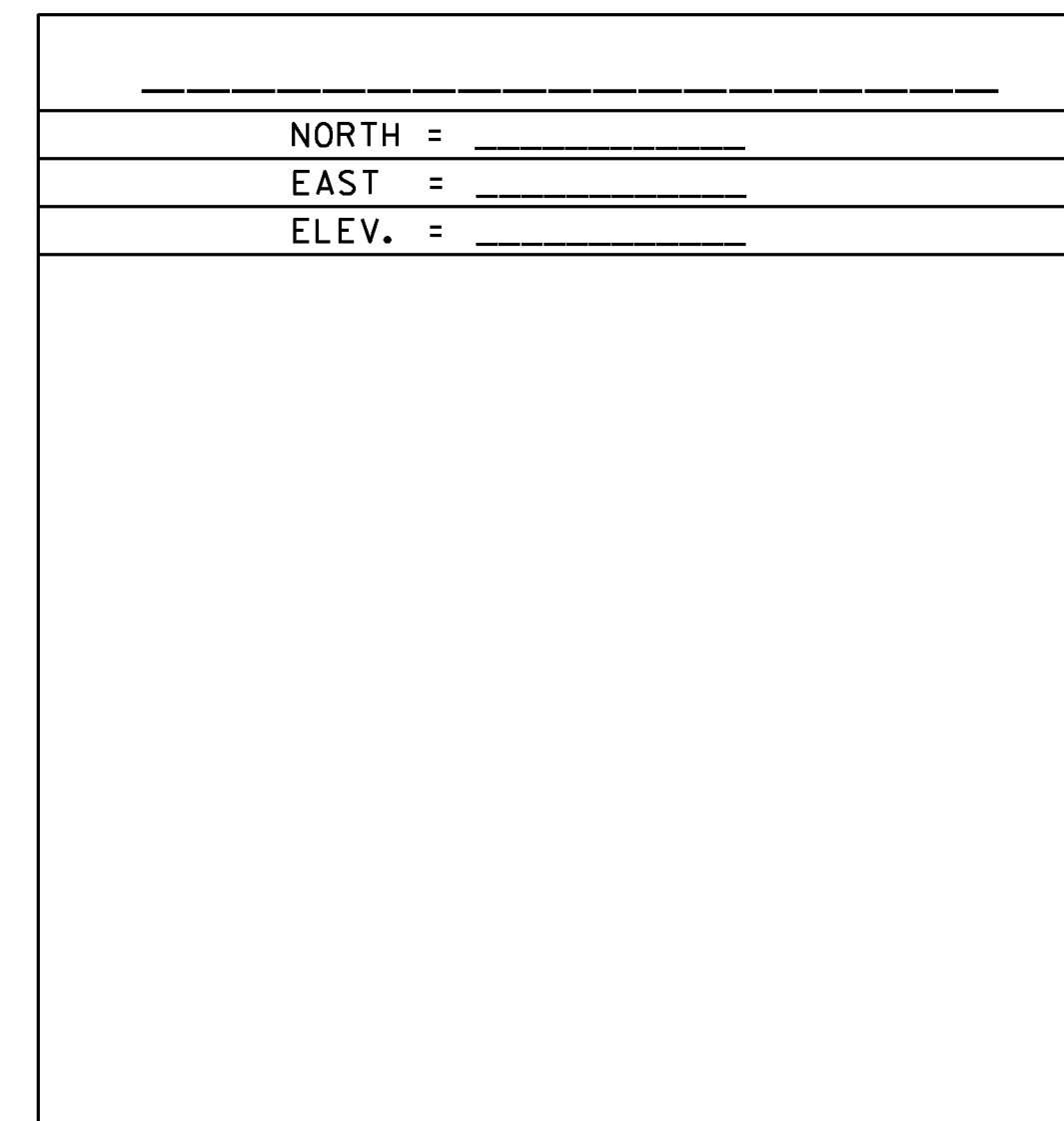
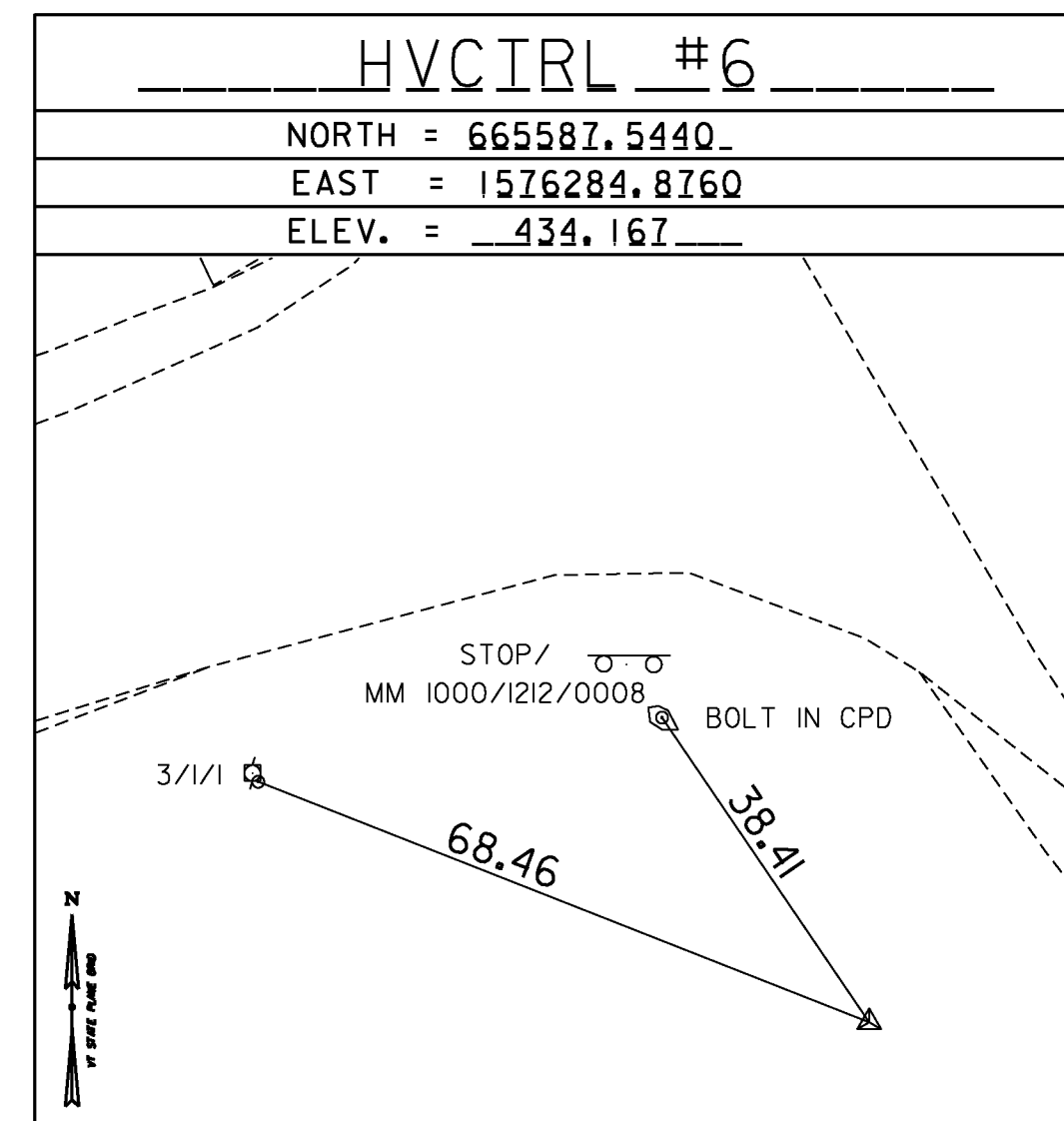
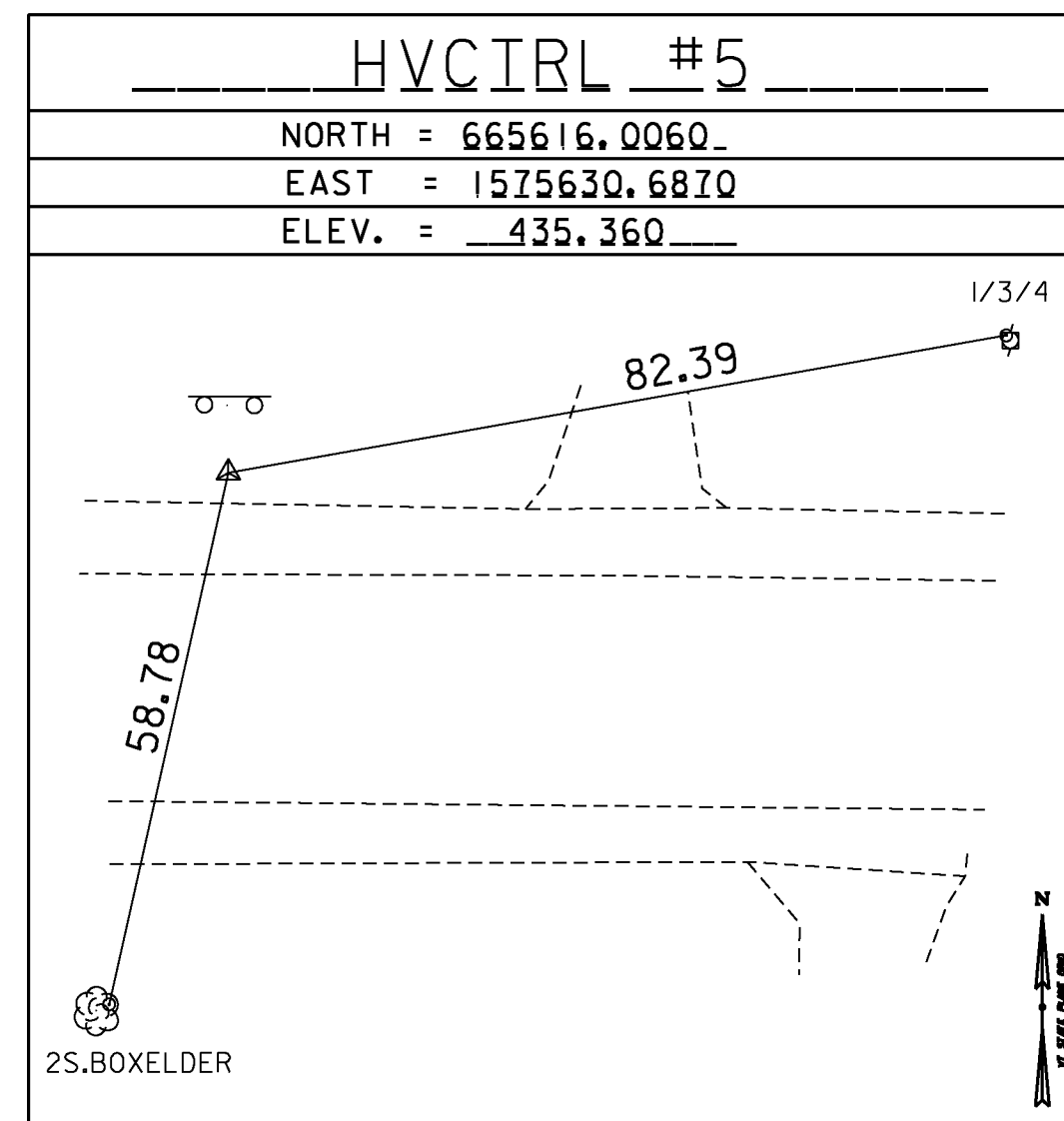
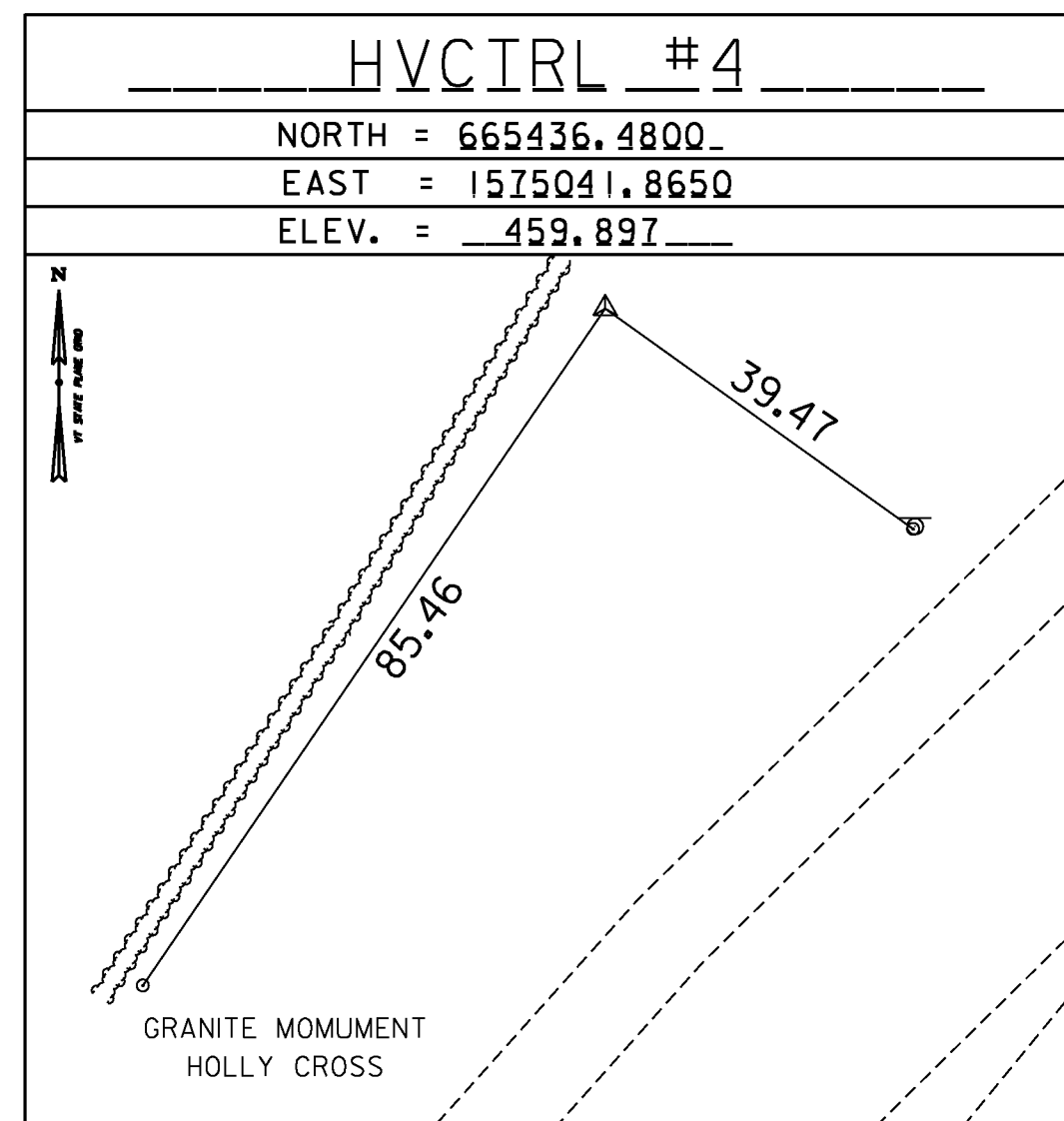
PI #1 PERRY_AZ_MK
 NORTH = 664617.3550
 EAST = 1573527.1190
 ELEV. = 533.540

GENERAL LOCATION, DUXBURY VT.
 THE MARK SET IN THE TOP OF A 30 CM DIAMETER CONCRETE MONUMENT WHICH PROJECTS SLIGHTLY ABOVE GROUND SURFACE. IT IS 7.4 M SOUTH OF AND 0.1 M HIGHER THAN THE CENTERLINE OF MAIN STREET, 9.2 M WEST-SOUTHWEST OF A HYDRANT, 28.6 M WEST-SOUTHWEST OF POLE NO 23/3-1/10, 20.8 M EAST-SOUTHEAST OF AND ACROSS THE ROAD FROM POLE NO 11/24 AND 16.2 M SOUTHWEST OF AND ACROSS THE ROAD FROM THE SOUTHWEST CORNER OF THE COVERED PORCH ON HOUSE NO 79.

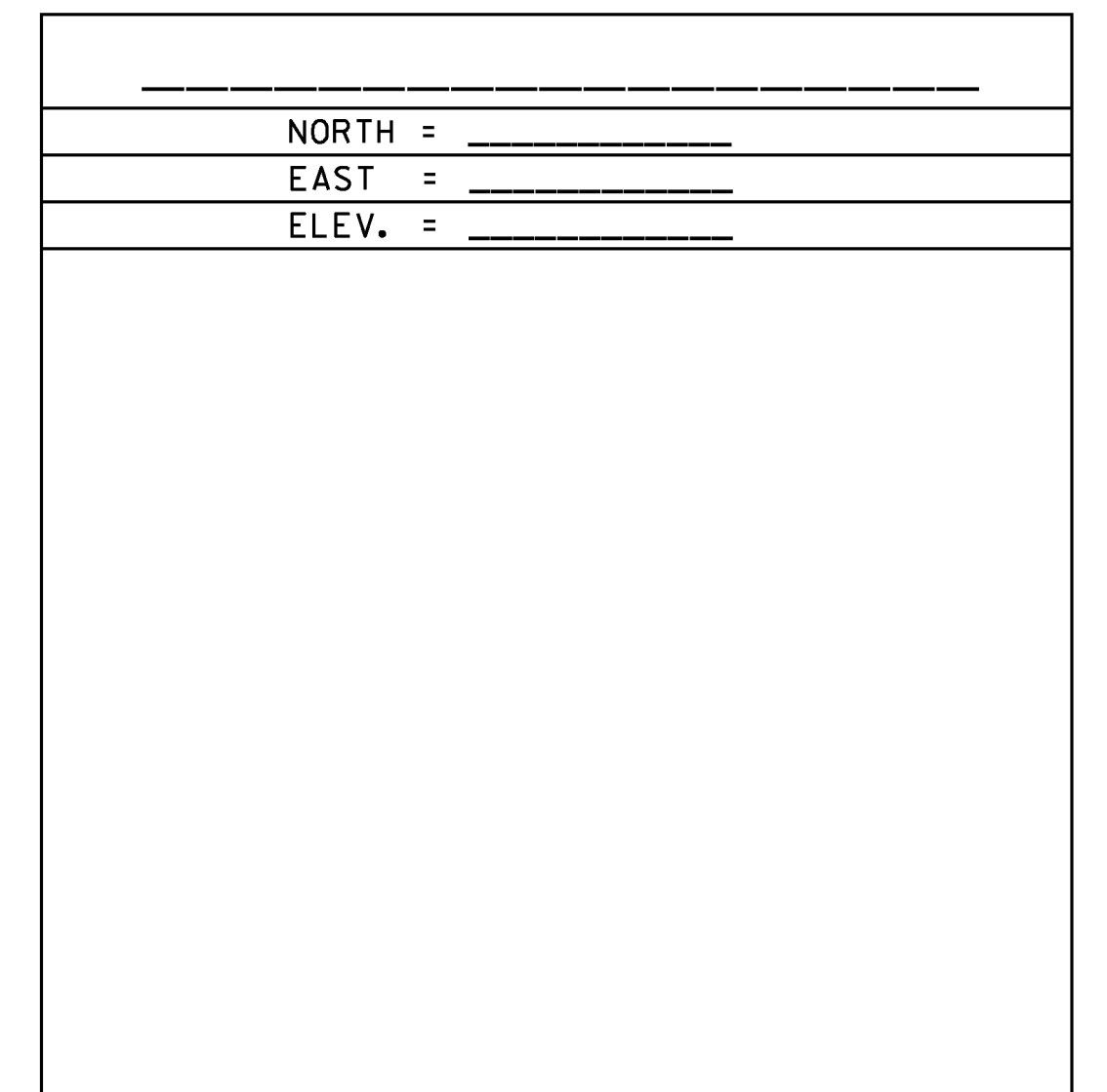
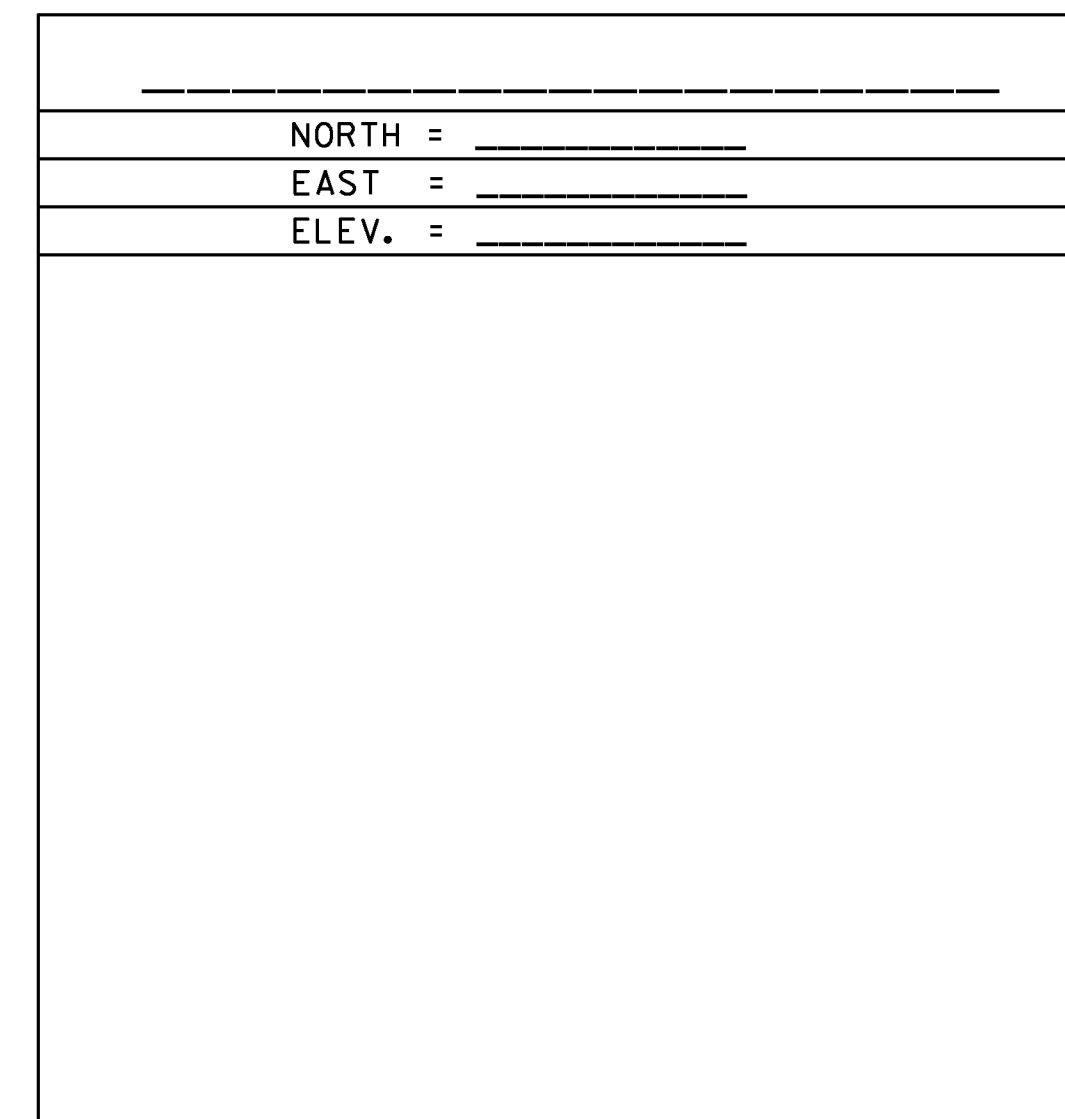
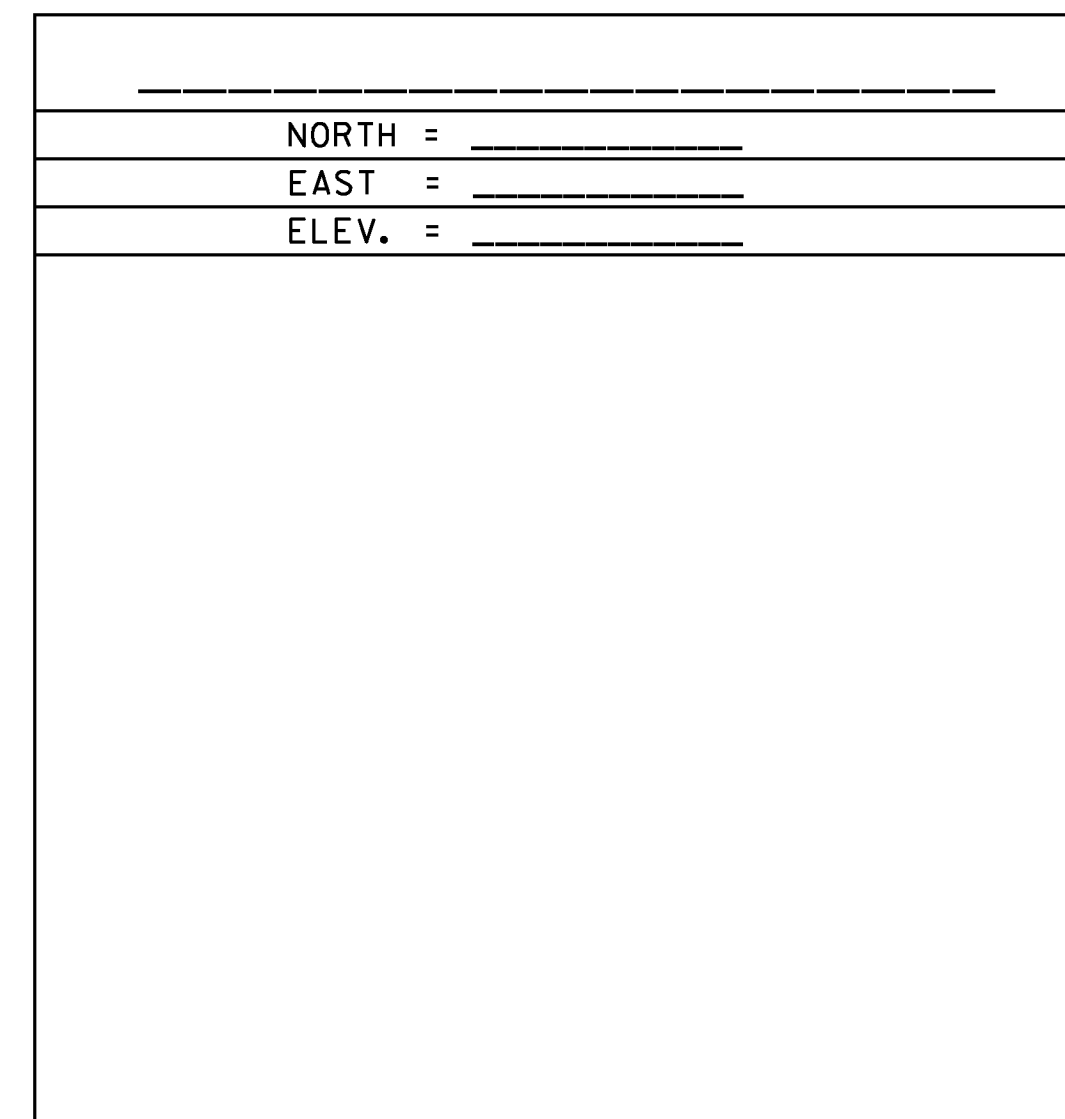
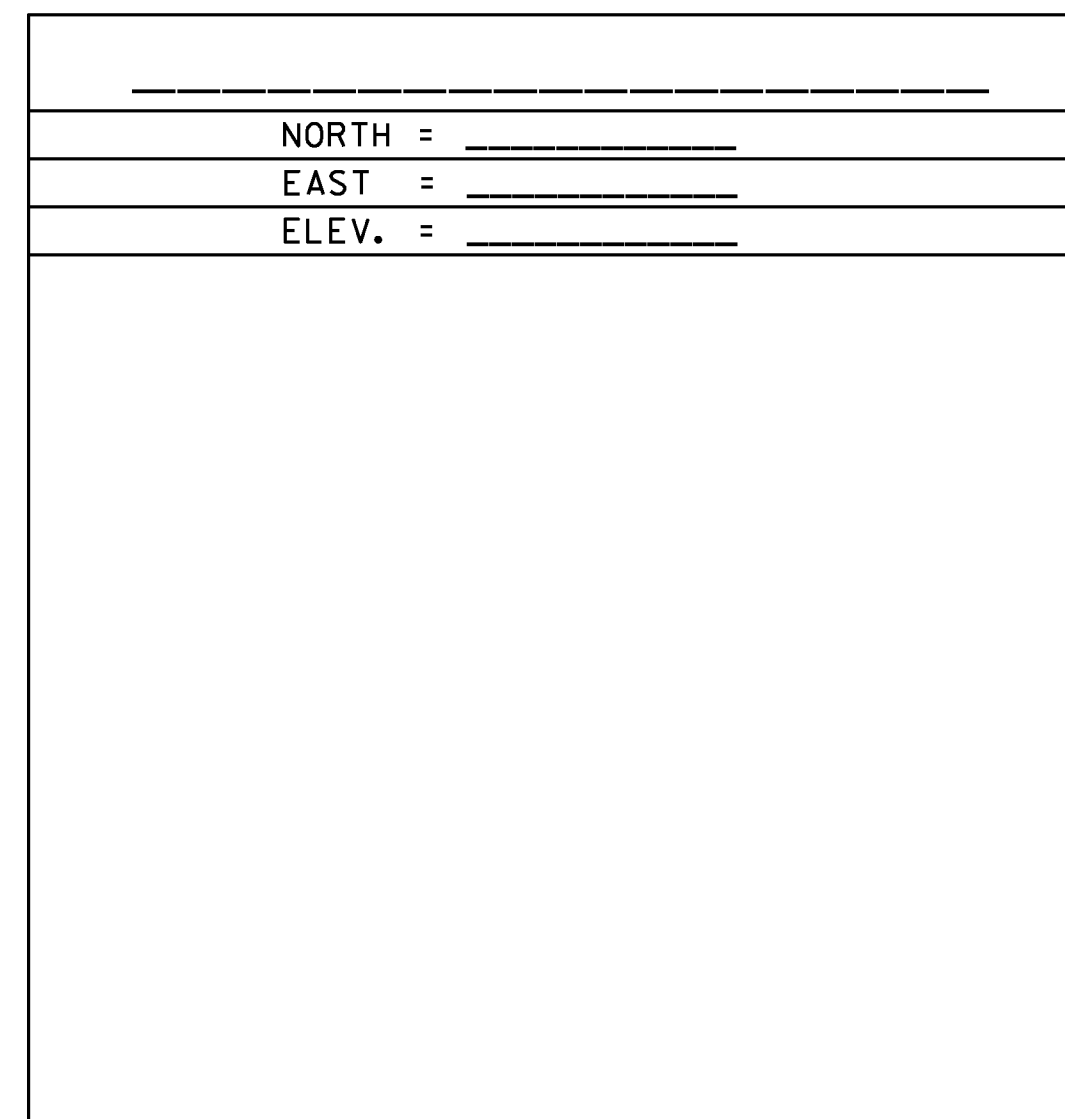
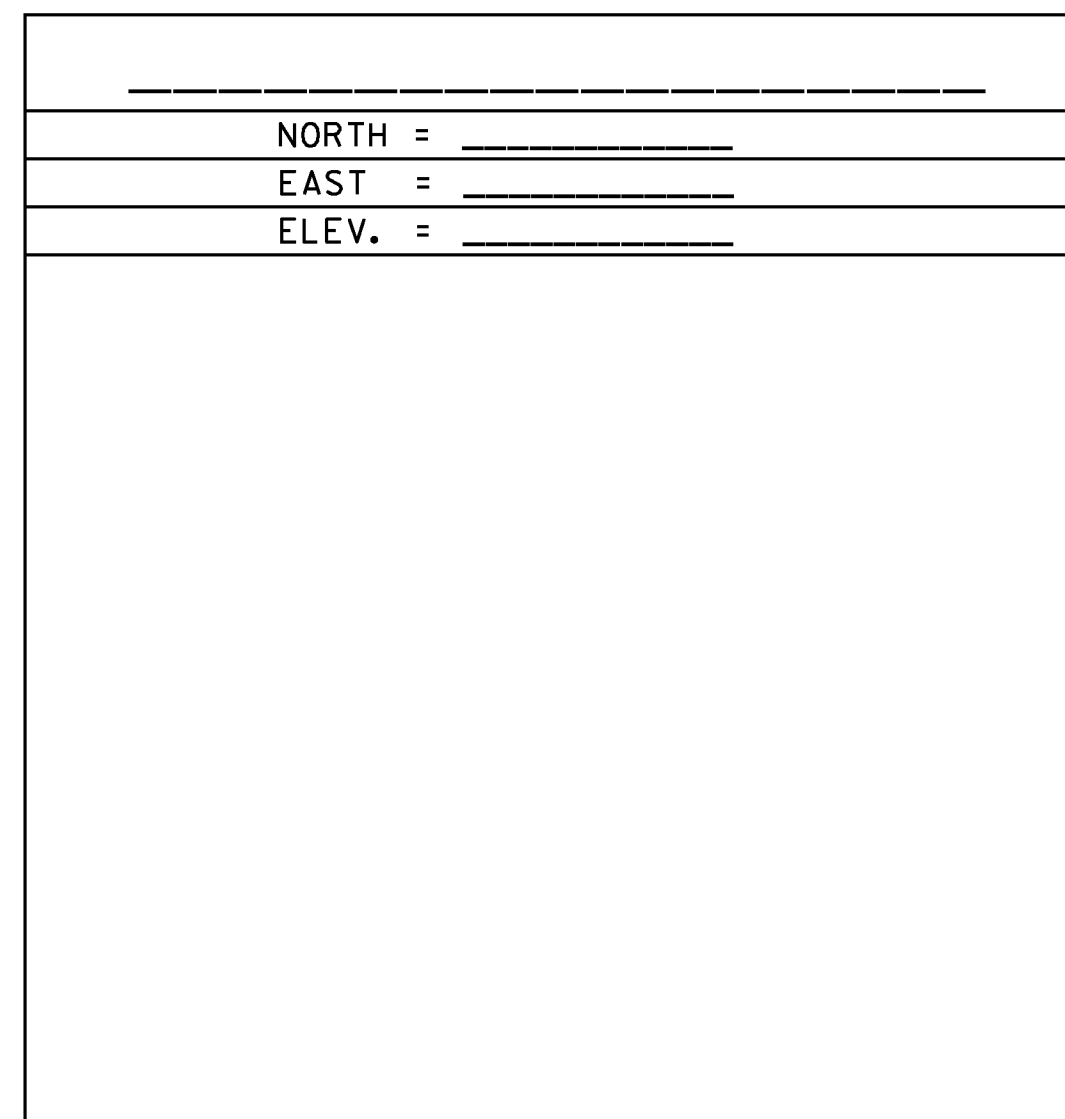
PI #99 STATE_FARM
 NORTH = 665405.4870
 EAST = 1575241.4920
 ELEV. = 456.740

GENERAL LOCATION, DUXBURY VT.
 THE MARK IS SET FLUSH WITH GROUND SURFACE IN THE TOP OF A 30 CM DIAMETER CONCRETE MONUMENT, AT THE SITE OF THE FORMER STATE OF VERMONT FARM STORAGE BARN. IT IS 24.7 M SOUTH OF AND 1.5 M HIGHER THAN THE CENTERLINE OF VT ROUTE 100, 9.4 M EAST-NORTHEAST OF THE CENTERLINE OF A PAVED DRIVE LEADING TO THE BARN, 36.1 M NORTH-NORTHWEST OF THE NORTH CORNER OF THE BARN, 23.1 M EAST-NORTHEAST OF POLE NO 2/2, AND 1.9 M SOUTH OF THE GRAVEL DRIVE LEADING TO HOUSE NO 11.

TRAVERSE TIES



ALIGNMENT TIES



DATUM	
VERTICAL	NAVD88
HORIZONTAL	NAOD83(2011)
ADJUSTMENT	COMPASS

PROJECT NAME:	WATERBURY
PROJECT NUMBER:	STP WKZN(9) C/2
FILE NAME:	t13k670frm.dgn
PROJECT LEADER:	P. COBURN
DESIGNED BY:	I. DEGUTIS
TIE SHEET	
PLOT DATE:	10/21/2014
DRAWN BY:	C. CYR
CHECKED BY:	I. DEGUTIS
SHEET	4 OF 13