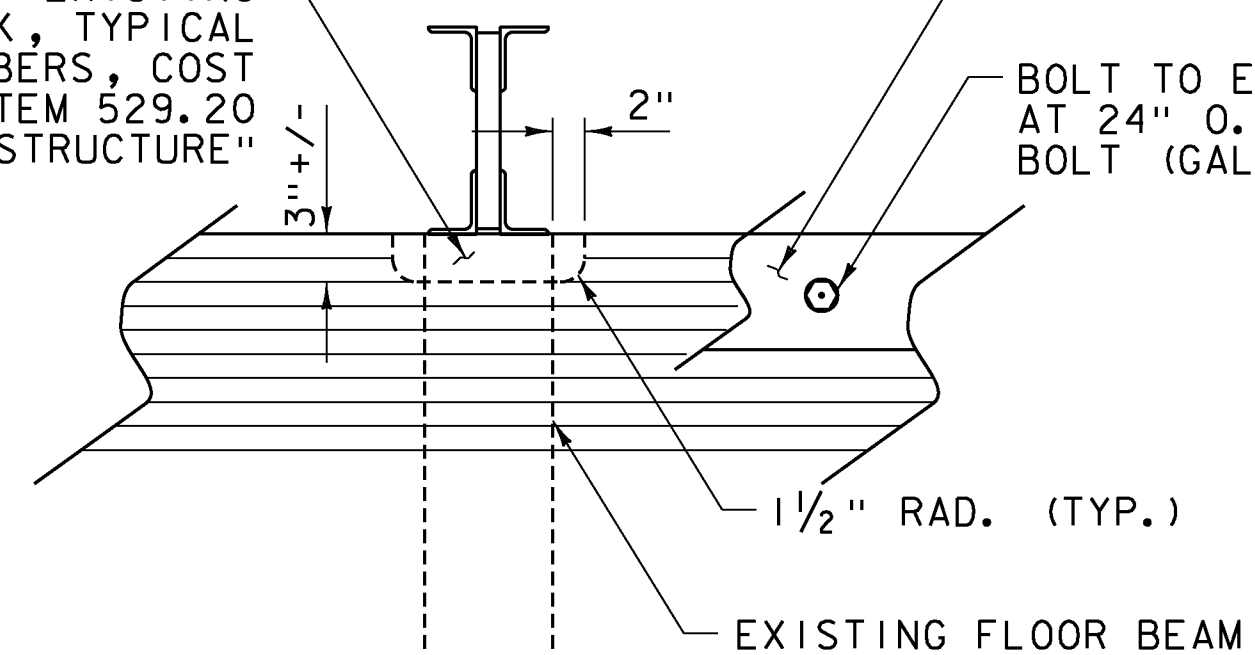


CURB ATTACHMENT DETAIL
SCALE 1" = 1'-0"

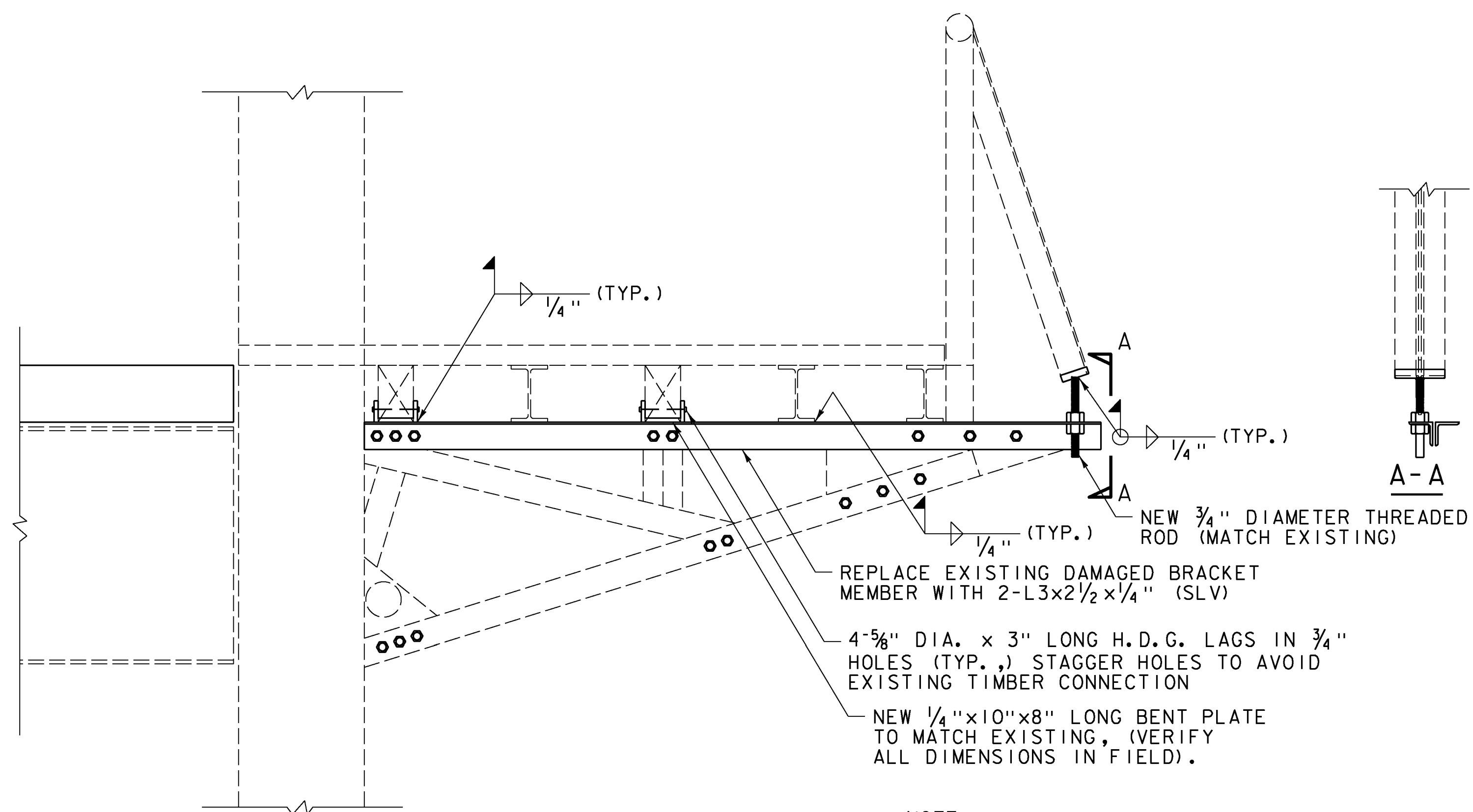
PARTIAL REMOVAL OF EXISTING
GLULAM TIMBER DECK, TYPICAL
AT ALL TRUSS MEMBERS, COST
TO BE INCLUDED UNDER ITEM 529.20
"PARTIAL REMOVAL OF STRUCTURE"



**TYPICAL PARTIAL DECK REMOVAL
AT TRUSS MEMBERS**
SCALE 1" = 1'-0"

REMOVE EXISTING TIMBER CURB
REPLACE WITH 4 1/2" x 7 1/4"
ITEM 616.35 - TREATED TIMBER
CURB

BOLT TO EXISTING DECK
AT 24" O.C. WITH 3/4" DIA.
BOLT (GALVANIZED)



SIDEWALK BRACKET REPAIR
SCALE 1" = 1'-0"

REPLACE EXISTING DAMAGED BRACKET
MEMBER WITH 2-L3x2 1/2 x 1/4" (SLV)

4-5/8" DIA. x 3" LONG H.D.G. LAGS IN 3/4"
HOLES (TYP.) STAGGER HOLES TO AVOID
EXISTING TIMBER CONNECTION

NEW 1/4" x 10" x 8" LONG BENT PLATE
TO MATCH EXISTING, (VERIFY
ALL DIMENSIONS IN FIELD).

NOTE:
1. REMOVAL OF EXISTING STEEL AND SUPPORT OF
EXISTING STRUCTURE INCIDENTAL TO ITEM 506.60.

PROJECT NAME: MONTPELIER
PROJECT NUMBER: BF BPNT (17)

FILE NAME: z13j290framing.dgn
PROJECT LEADER: T. KNIGHT
DESIGNED BY: T. KNIGHT
MISCELLANEOUS DETAILS

PLOT DATE: 5/12/2014
DRAWN BY: L. BUXTON
CHECKED BY: T. KNIGHT
SHEET 10 OF 16

