

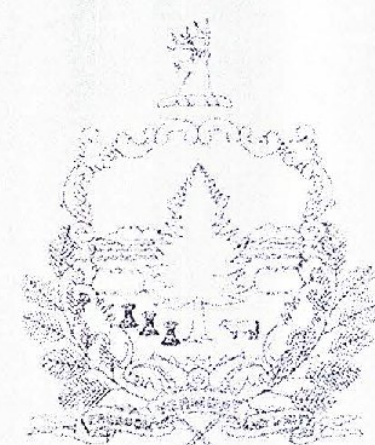
INDEX OF SHEETS

- 1 TITLE SHEET
- 2 PROJECT NOTES
- 3 QUANTITY SHEET - QTY 1
- 4 TRAFFIC CONTROL SHEET - TCSI
- 5 TRAFFIC SIGN SHEET - TSS 1
- 6 UTILITY PLAN - UTL 1
- 7-9 RAILING DETAILS 1-3
- 10 MISCELLANEOUS DETAILS
- 11 BLANK
- 12-16 REFERENCE PLANS

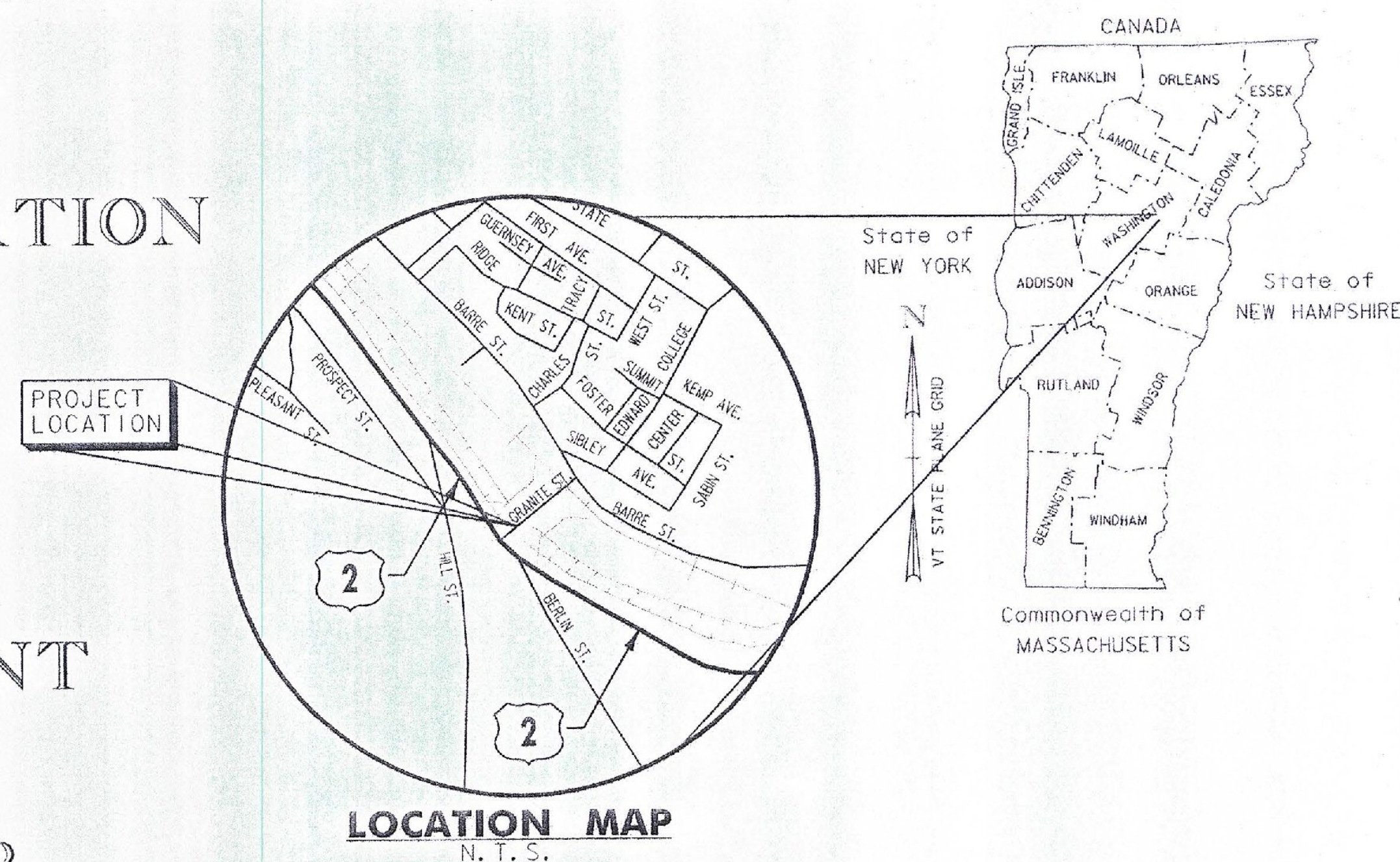
INDEX OF STANDARDS

E-121	STANDARD SIGN PLACEMENT CONVENTIONAL ROAD	08/08/1995
C-1	STEEL BEAM GUARDRAIL WITH STEEL POSTS	02/10/2014
	STEEL BEAM GUARDRAIL WITH WOOD POSTS	
G-1D	STEEL BEAM GUARDRAIL APPROACH END TERMINAL	02/10/2014
	STEEL BEAM GUARDRAIL TRAILING END TERMINAL	
	ANCHOR FOR STEEL BEAM GUARD RAIL	
	STEEL BEAM MEDIAN BARRIER	
G-16	STEEL BEAM GUARDRAIL ATTACHMENTS TO EXISTING BRIDGE	06/01/1994
	TERMINAL CONNECTOR FOR STEEL BEAM GUARDRAIL	
T-1	TRAFFIC CONTROL GENERAL NOTES	08/06/2012

STATE OF VERMONT
AGENCY OF TRANSPORTATION



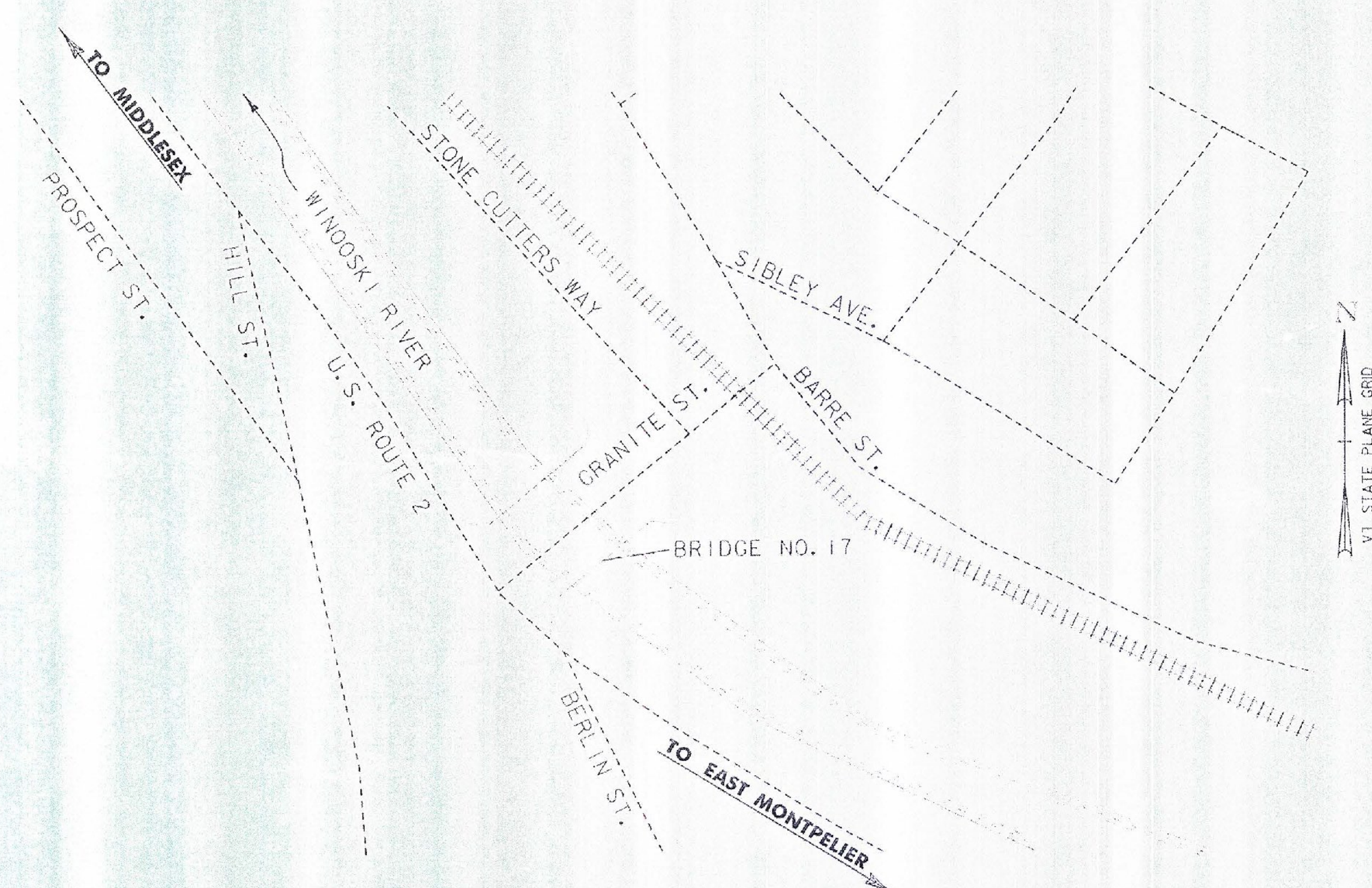
PROPOSED IMPROVEMENT
BRIDGE PROJECT
CITY OF MONTPELIER
COUNTY OF WASHINGTON
BRIDGE NO. 17



BEGINNING AT A POINT ON GRANITE STREET APPROXIMATELY 225 FEET NORTHEAST OF THE INTERSECTION OF GRANITE STREET AND RIVER STREET (U.S. ROUTE 2) AND EXTENDING SOUTHWESTERLY ALONG GRANITE STREET FOR APPROXIMATELY 205.6 FEET.

THIS PROJECT INVOLVES CLEANING AND PAINTING THE EXISTING STEEL SUPERSTRUCTURE AND MINOR ASSOCIATED WORK.

RECORD PLANS	
CONTRACTOR:	MODERN PROTECTIVE COATINGS, INC. - BERLIN, VT
RESIDENT ENGINEER:	JOSH HULETT
CONSTRUCTION BEGAN:	SEPTEMBER 8, 2014
CONSTRUCTION COMPLETE:	NOVEMBER 21, 2014
RECORD PLANS BY:	JOSH HULETT & PERCY BANNERMAN
I HEREBY CERTIFY THAT ALL THE CONSTRUCTION REQUIRED BY THIS SET OF DRAWINGS HAS BEEN ACCOMPLISHED AS INDICATED HEREIN.	
BY	<i>Josh Hulett</i> RESIDENT ENGINEER
DATE	MAY 7, 2015
NOTE: Any further information concerning final quantities, amounts or other details relative to this project may be found at Central Files in the electronic archives.	



THESE PLANS ARE SUBJECT TO SUCH ENGINEERING CHANGES AS MAY BE REQUIRED BY THE FEDERAL HIGHWAY ADMINISTRATION OR THE DIRECTOR OF PROGRAM DEVELOPMENT.

CONSTRUCTION IS TO BE CARRIED ON IN ACCORDANCE WITH THESE PLANS AND THE STANDARD SPECIFICATIONS FOR CONSTRUCTION DATED 2011, AS APPROVED BY THE FEDERAL HIGHWAY ADMINISTRATION ON JULY 20, 2011 FOR USE ON THIS PROJECT, INCLUDING ALL SUBSEQUENT REVISIONS AND SUCH REVISED SPECIFICATIONS AND SPECIAL PROVISIONS AS ARE INCORPORATED IN THESE PLANS.

QUALITY ASSURANCE PROGRAM : LEVEL 3

DATUM
VERTICAL N/A
HORIZONTAL N/A

		DIRECTOR OF PROGRAM DEVELOPMENT
	Stantec Consulting Services Inc.	APPROVED: <i>Richard Sargent</i> 6-11-14
	55 Green Mountain Drive South Burlington VT U.S.A. 05403 Phone: (802) 864-0235 Fax: (802) 864-0165 www.stantec.com	PROJECT MANAGER : MARK SARGENT
		PROJECT NAME : MONTPELIER
		PROJECT NUMBER : BF BPNT (17)
		SHEET 1 OF 16 SHEETS