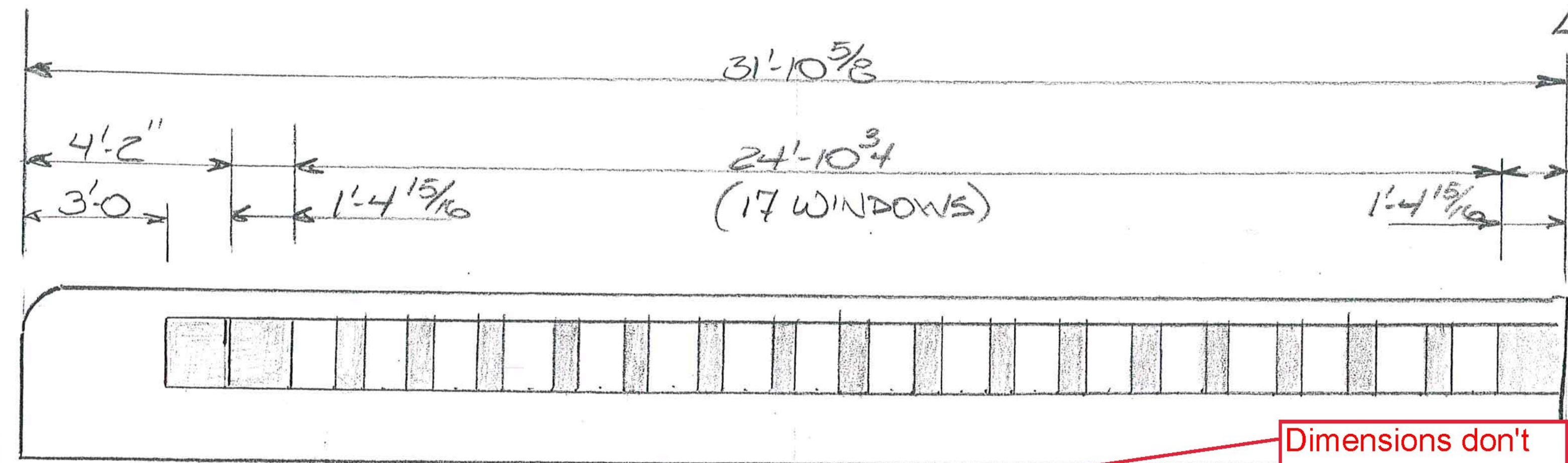


LEFT RAIL (NORTH BRIDGE)

10" to kick back vertex (per Note 3 Sheet 17 of Contract plans)
 + [1'-10" (min) + 5 1/16" = 10" + 2'-3 1/16"]

Dimension check:
 10" + 2'-3 1/16" + 12'-10 3/4" + 1'-3 1/16" + 4'-2" = 21'-4 7/8"



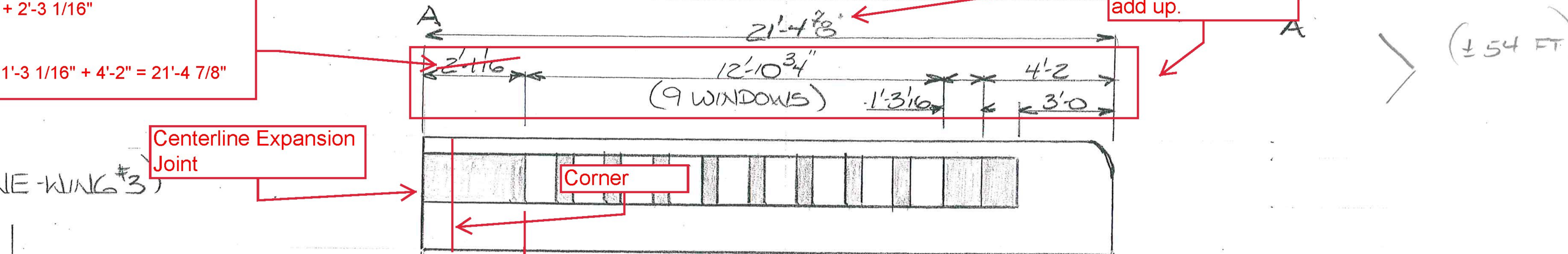
Centerline Expansion Joint

Dimensions don't add up.

LEFT RAIL (NE-WING #3)

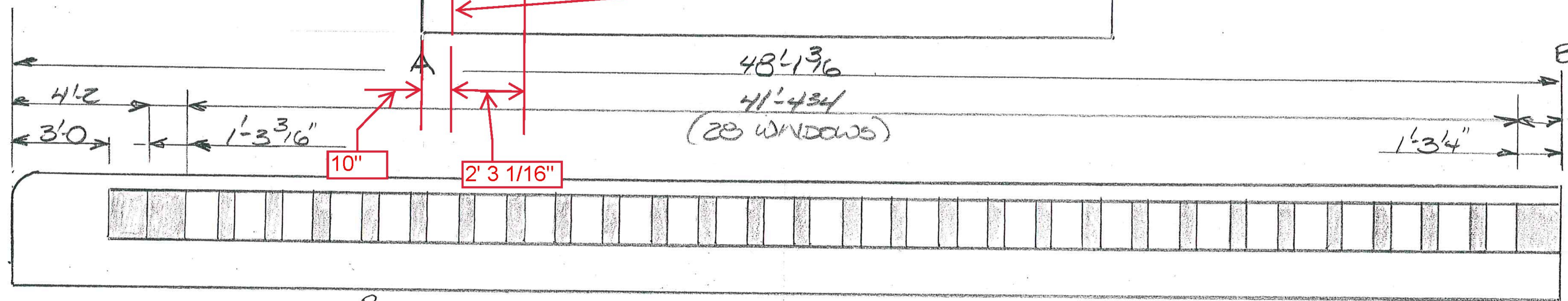
Centerline Expansion Joint

Corner



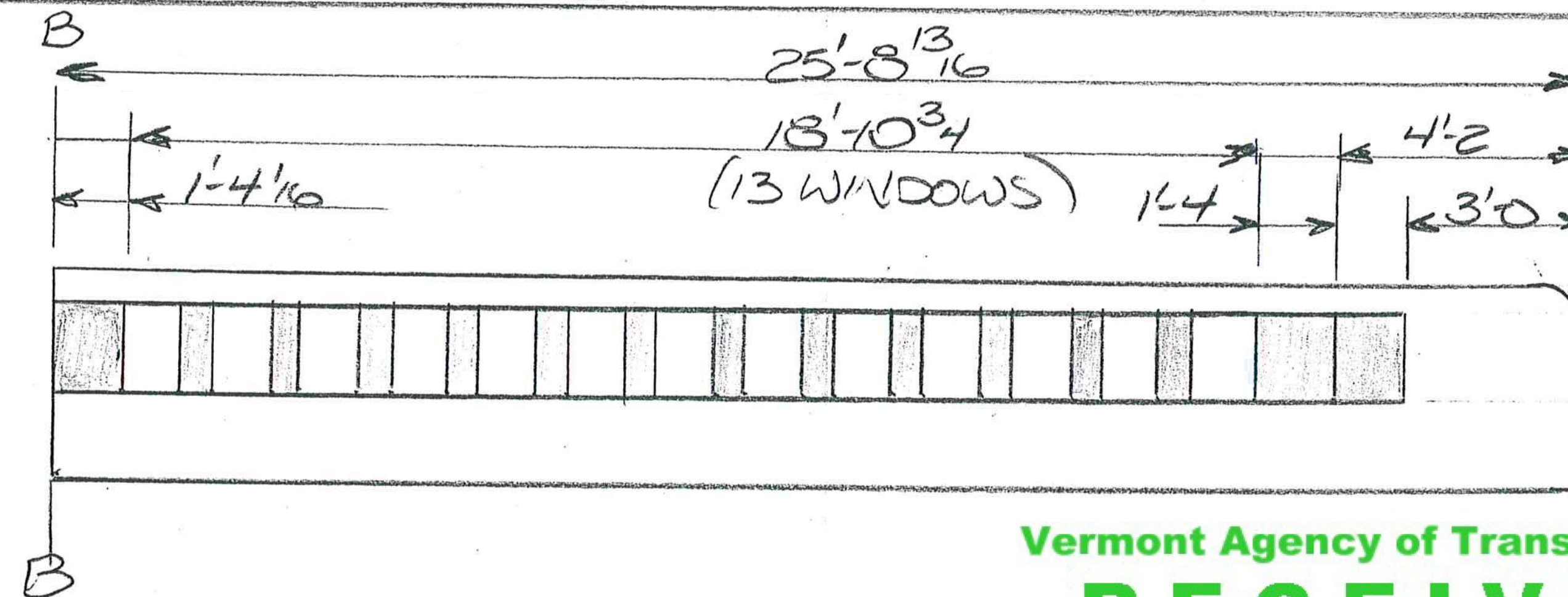
(± 54 FT)

RIGHT RAIL (SOUTH BRIDGE)



(± 75 FT)

RIGHT RAIL (SW-RET. WL)



Vermont Agency of Transportation

RECEIVED

CK'D BY Stephen Coley OK'D BY Rob Young

January 2, 2018

RESUBMIT No Approved AsNoted

BY Rob Young DATE 01/19/2018

WOODSTOCK - BTE 4
 NEW RAILING DETAILS
 SCALE 1/4" = 1'-0"