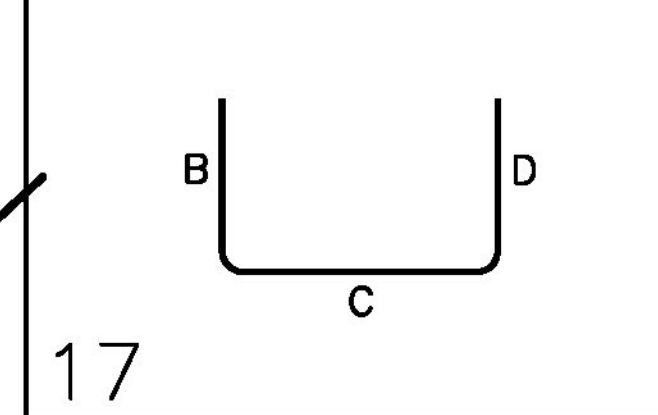
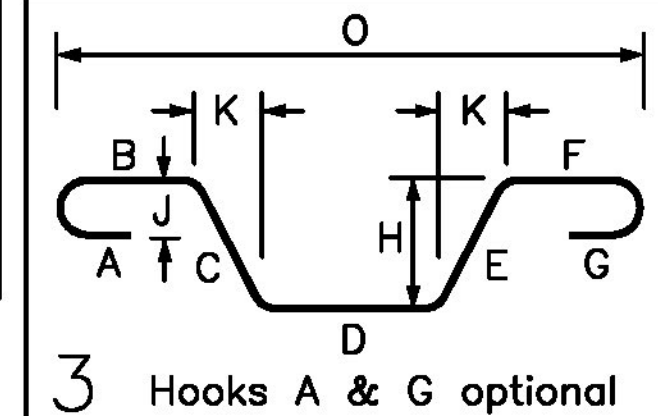


Release Number:				BAR LIST												
Bar Mark	Qty	Size	Total Length	Type	'A'	'B'	'C'	'D'	'E'	'F'	'G'	'H'	'J'	'K'	'O'	'R'
31BR01	92	#3	2'-7"	17		1'-2"	0'-3"	1'-2"								
41BR01	8	#4	7'-11"	17		3'-4 1/2"	1'-2"	3'-4 1/2"								
41BR02	2	#4	6'-6"	17		2'-8"	1'-2"	2'-8"								
41BR03	2	#4	7'-9"	17		3'-3 1/2"	1'-2"	3'-3 1/2"								
41BR04	4	#4	2'-2 1/2"	3		1'-10"	0'-4 1/2"			0'-3"		0'-3 1/2"	2'-1 1/2"			
41BR05	5	#4	2'-11 1/2"	3		2'-6"	0'-5 1/2"			0'-4"		0'-4 1/2"	2'-10 1/2"			
41BR06	2	#4	2'-10 1/2"	3		2'-6"	0'-4 1/2"			0'-3"		0'-3 1/2"	2'-9 1/2"			
41BR07	26	#4	3'-10"	17		1'-4"	1'-2"	1'-4"								
41BR08	4	#4	4'-2 1/2"	3		2'-9"	1'-5 1/2"			0'-7"		1'-4 1/2"	4'-1 1/2"			
51BR01	66	#5	7'-2 1/2"	17		3'-4"	0'-6 1/2"	3'-4"								

FOR APPROVAL

WORK THIS DRAWING WITH DRAWING B1.1



LEGEND:

CONT.-CONTINUOUS	E.E.-EACH END
TRANS.-TRANSVERSE	E.F.-EACH FACE
DWLS.-DOWELS	F.F.-FRONT FACE
VERTS.-VERTICAL	R.F.-REAR FACE
HORIZ.-HORIZONTAL	E.W.-EACH WAY
T&B -TOP & BOTTOM	O.C.-ON CENTER
I.F.-INNER FACE	L.W.-LONG WAY
O.F.-OUTER FACE	S.W.-SHORT WAY

ELEVATIONS & DIMENSIONS SHOWN ON THIS DWG. ARE FOR REINF. DETAILING PURPOSES ONLY AND ARE NOT INTENDED FOR DIMENSIONAL CONSTRUCTION.

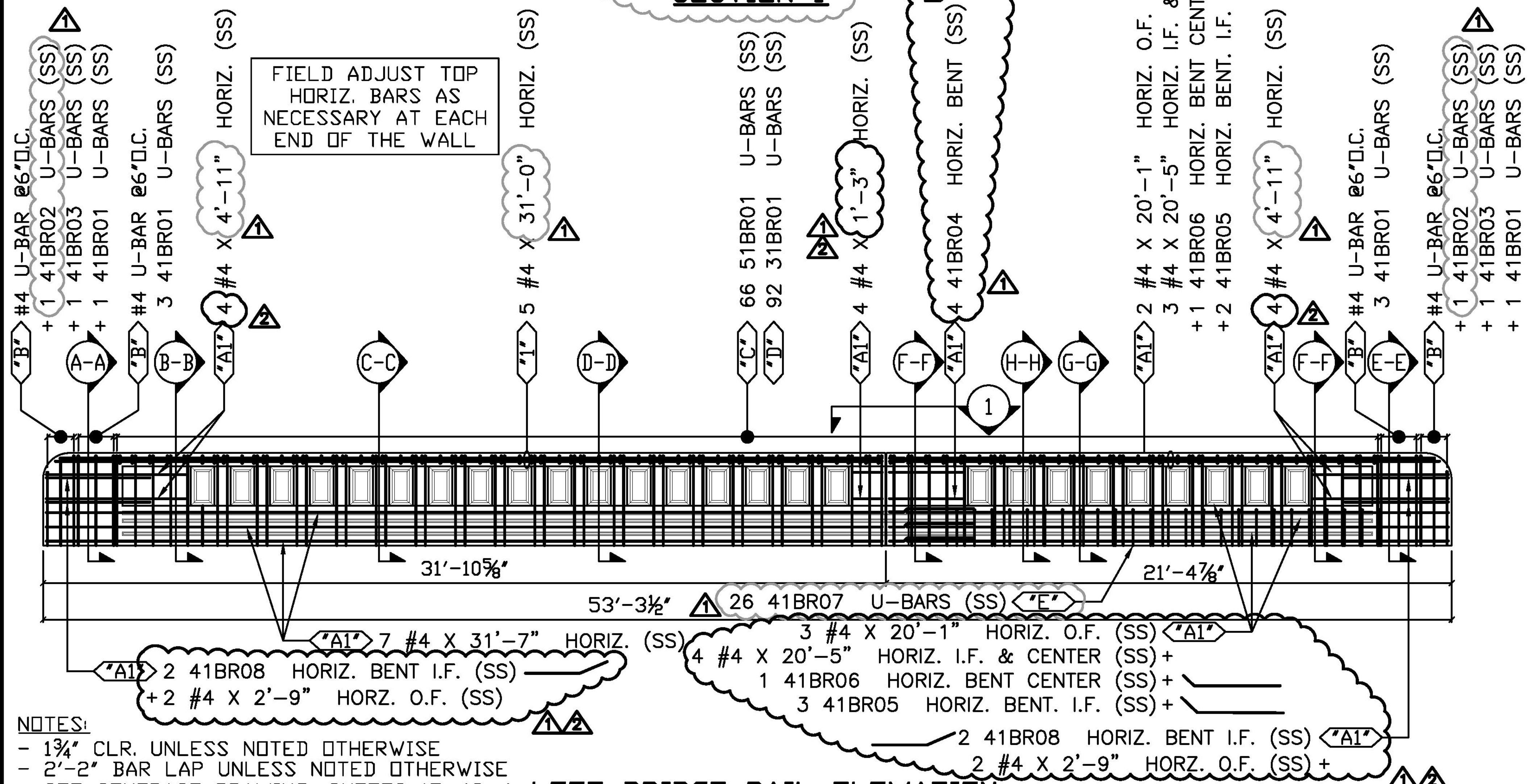
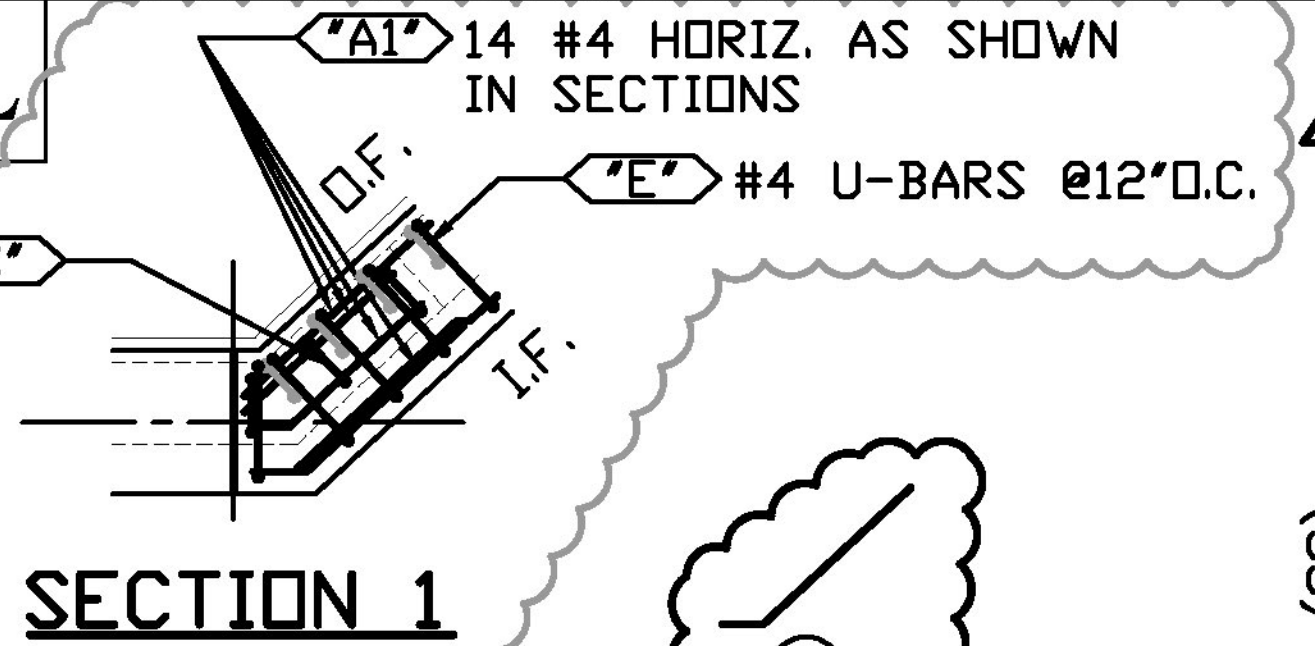
REINF. BARS ASTM A955 GRADE 60

VERIFICATION OF UNCLEAR INFORMATION MAY BE REQUESTED ON THIS DRAWING. SHOULD VERIFICATION BE LEFT UN-ADDRESSED IT WILL REMAIN AS SHOWN AND ASSUME TO BE CORRECT.

ALL REINF. STAINLESS STEEL

Vermont Agency of Transportation
RECEIVED
 CK'D BY Stephen Coley OK'D BY Rob Young
 January 23, 2018
 RESUBMIT No Approved
 BY Rob Young DATE 01/26/2018

#5 U-BARS @8"O.C. MAX. (2 BAR MIN. BETWEEN WINDOWS)



NOTES:
 - 1 1/4" CLR. UNLESS NOTED OTHERWISE
 - 2'-2" BAR LAP UNLESS NOTED OTHERWISE
 - SEE CONTRACT DRAWING, SHEETS 17, 18, & 41 FOR BARS NOT LISTED ON THIS SHEET.

LEFT BRIDGE RAIL ELEVATION
 CONTRACT DWG. REF. 17 OF 53

6			
5			
4			
3	1/22/12	2	REVISED AS NOTED/FOR APPROVAL
2	1/10/18	1	REVISED AS NOTED/FOR APPROVAL
1	12/6/17	-	FOR APPROVAL
	DATE	REV.#	SENT FOR

 DIMENSION FABRICATORS INC. www.dimensionfabricators.com 2000 7TH STREET SCOTIA, N.Y. 12302 PH: (518) 374-1936 FAX (518) 374-4830		STRUCTURE	VTAOT WOODSTOCK BF 020-2(43)
		LOCATION	US RTE 4 (CENTRAL AVE) OVER KEDRON BROOK WOODSTOCK, VT
ARCHITECT			
ENGINEER		VHB	
CUSTOMER		COLD RIVER BRIDGES, LLC	
DRAWN BY	DATE	DPI #	
SDB	12/4/17	10551	
DRAWING COVERS		DRAWING #	
LEFT BRIDGE RAILING ELEVATION		B1	