

Swift Lift System



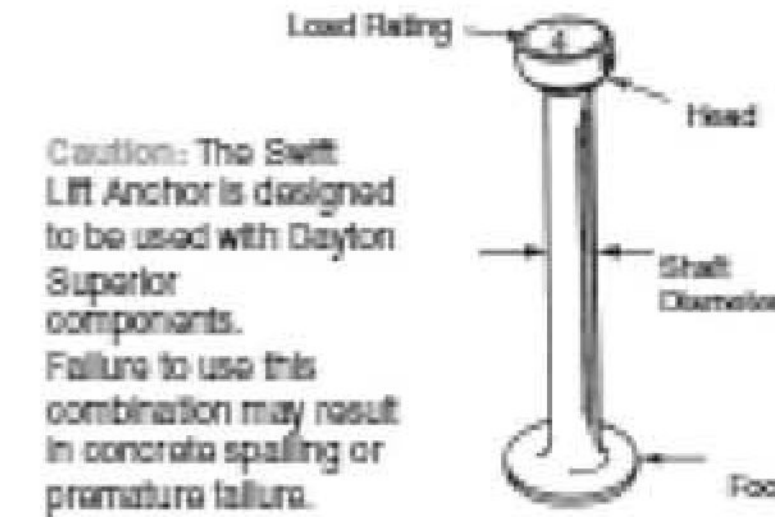
P-52 Swift Lift Anchor

The P-52 Swift Lift Anchor is hot forged from carbon steel. The formed head provides spherical seating that the Lifting Eye engages, while a disc-shaped foot is embedded in the concrete.

Due to its being a forged part, the Swift Lift Anchor does not depend on welds or thread engagement to develop its safe working load. Forging provides maximum safety with its advantageous material structure. This allows the anchor to easily meet the OSHA requirement of a 4 to 1 factor of safety.

In addition to the carbon steel anchors, Type 304 or 316 Stainless Steel Swift Lift Anchors are available on special order. Use stainless steel anchors when maximum protection against corrosion is required.

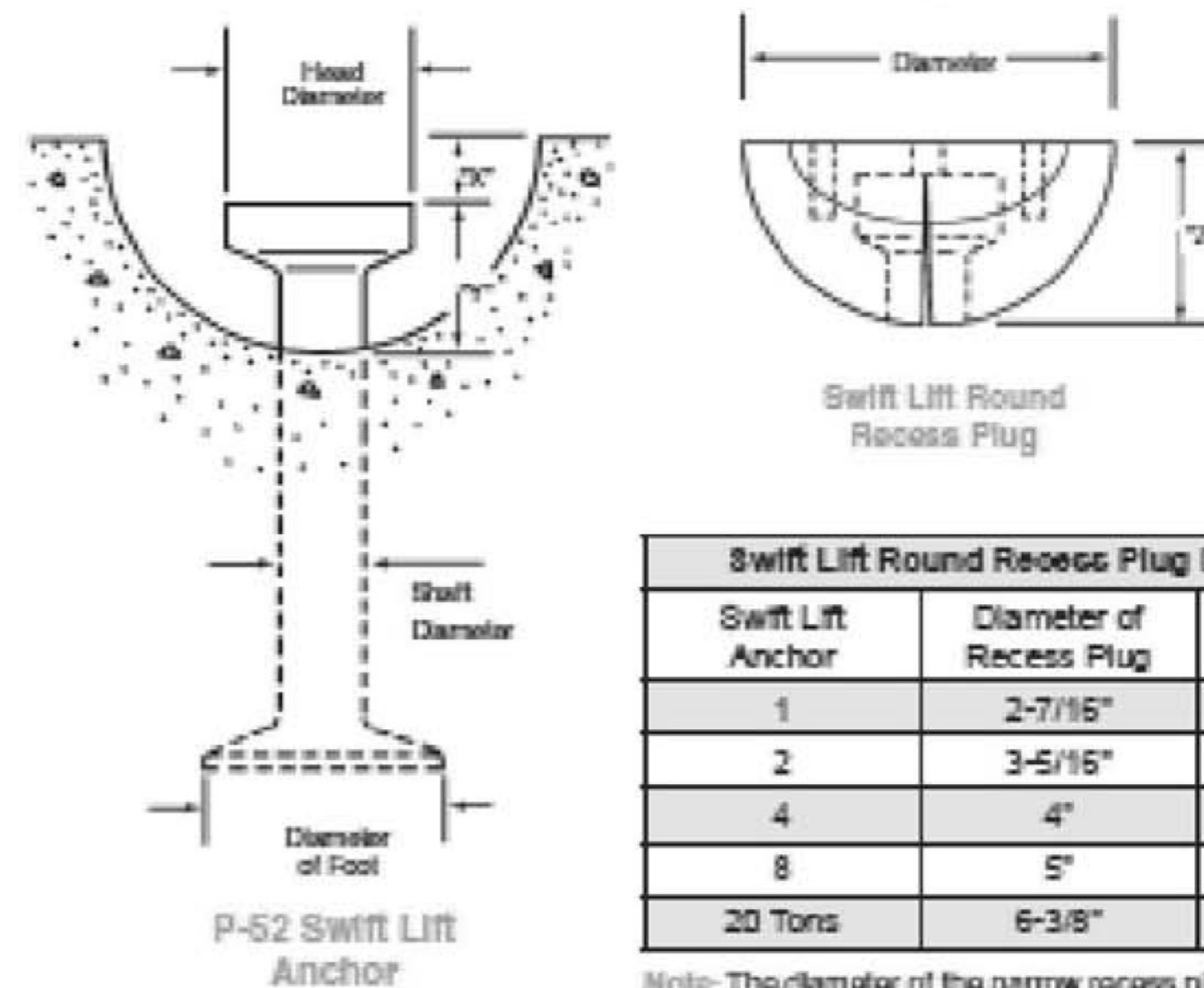
For safety, refer to the P-52 Swift Lift Anchor Selection Chart on page 31 to determine the actual safe working load of an individual anchor. The MAXIMUM safe working load is clearly visible on the head of the anchor for easy recognition of the appropriate hardware and accessories for use with each Swift Lift Anchor.



Caution: The Swift Lift Anchor is designed to be used with Dayton Superior components. Failure to use this combination may result in concrete spalling or premature failure.

To Order:
Specify: (1) quantity, (2) name, (3) system size, (4) length
Example:
200, P-52 Swift Lift Anchors, 4 ton, 9-1/2" long

P-52 Swift Lift Anchor and Recess Plug Dimensions



Swift Lift Round Recess Plug Dimensions		
Swift Lift Anchor	Diameter of Recess Plug	Dimension "Z"
1	2-7/16"	1-3/16"
2	3-5/16"	1-7/16"
4	4"	1-13/16"
8	5"	2-5/16"
20 Tons	6-3/8"	3-1/8"

Note: The diameter of the narrow recess plug is the same as the diameter of the round recess plug.

P-52 Swift Lift Anchor Dimensions					
Swift Lift Anchor	Dimension "X"	Dimension "Y"	Shaft Diameter	Foot Diameter	Head Diameter
1	5/16"	7/8"	3/8"	1"	1 1/16"
2	7/16"	1-1/16"	9/16"	1-3/8"	1-1/32"
4	9/16"	1-5/16"	3/4"	1-7/8"	1-11/32"
8	9/16"	1-5/8"	1-3/32"	2-5/8"	1-7/8"
20 Tons	9/16"	2-5/8"	1-1/2"	3-3/4"	2-3/4"

28

07/07

PER DAYTON SUPERIOR LIFTING DESIGN USE: 4 TON SWIFT LIFT ANCHORS X9.5" WITH 4 TON SWIFT LIFT RECESS PLUGS

Notes:

All lifting eye recesses will be filled with an approved grout from the Vermont Approved products list.

Vermont Agency of Transportation
RECEIVED

CK'D BY Stephen Coley OK'D BY Rob Young

January 26, 2018

RESUBMIT No Approved

BY Rob Young DATE 02-06-2018

COLD RIVER BRIDGES, LLC
10 LANBRO LANE
WALPOLE, NH
TEL 603-756-9800 FAX 603-756-9803

WOODSTOCK BF 020-2(43)

SWIFT LIFT ANCHORS	SHEET NUMBER
REVISION #1 1/26/18	8
DATE 2/21/17	