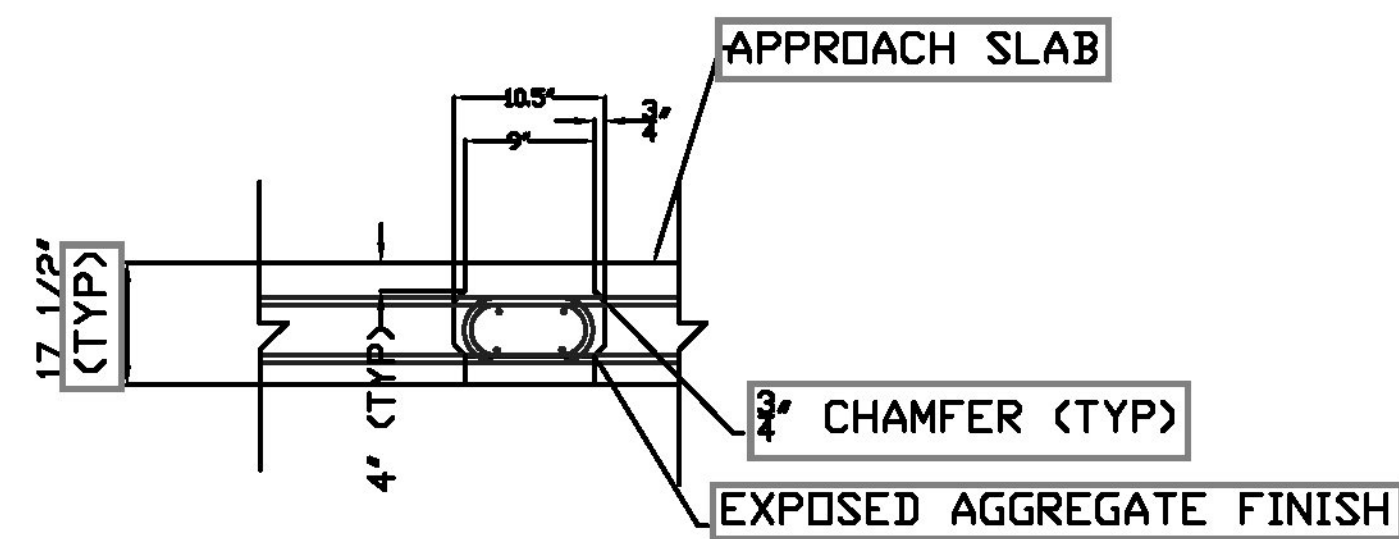
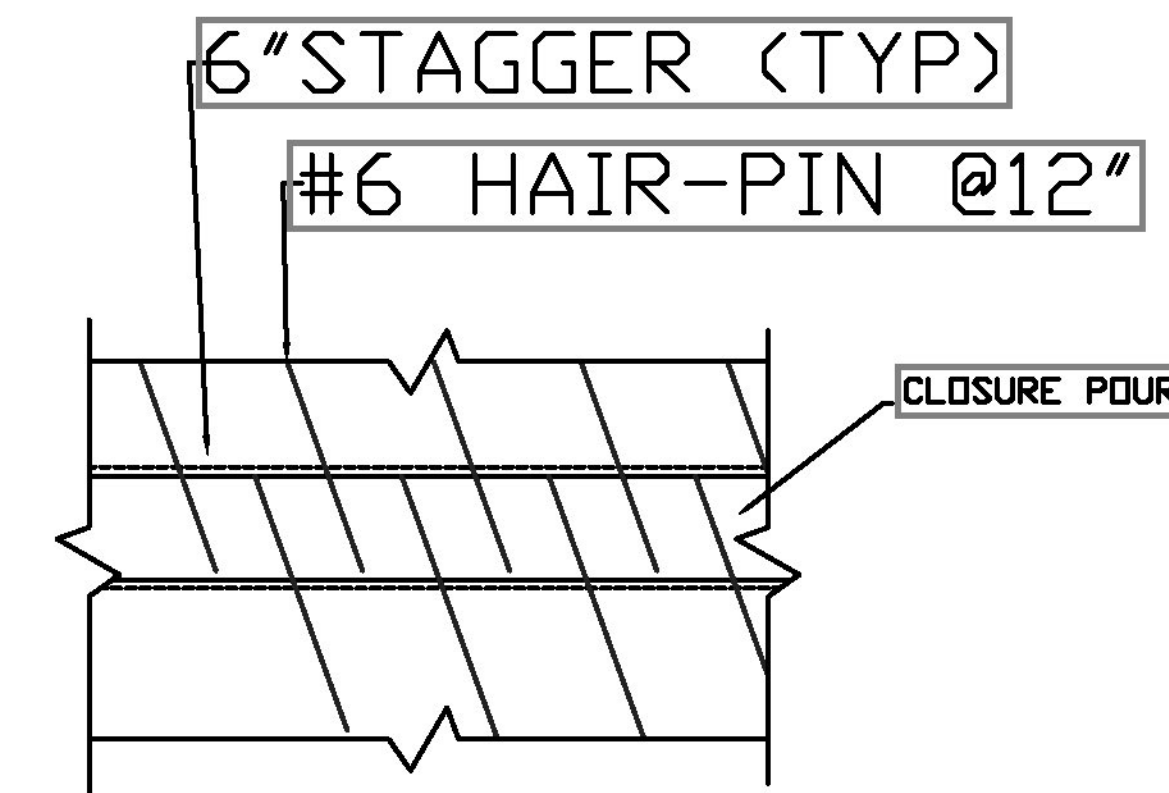
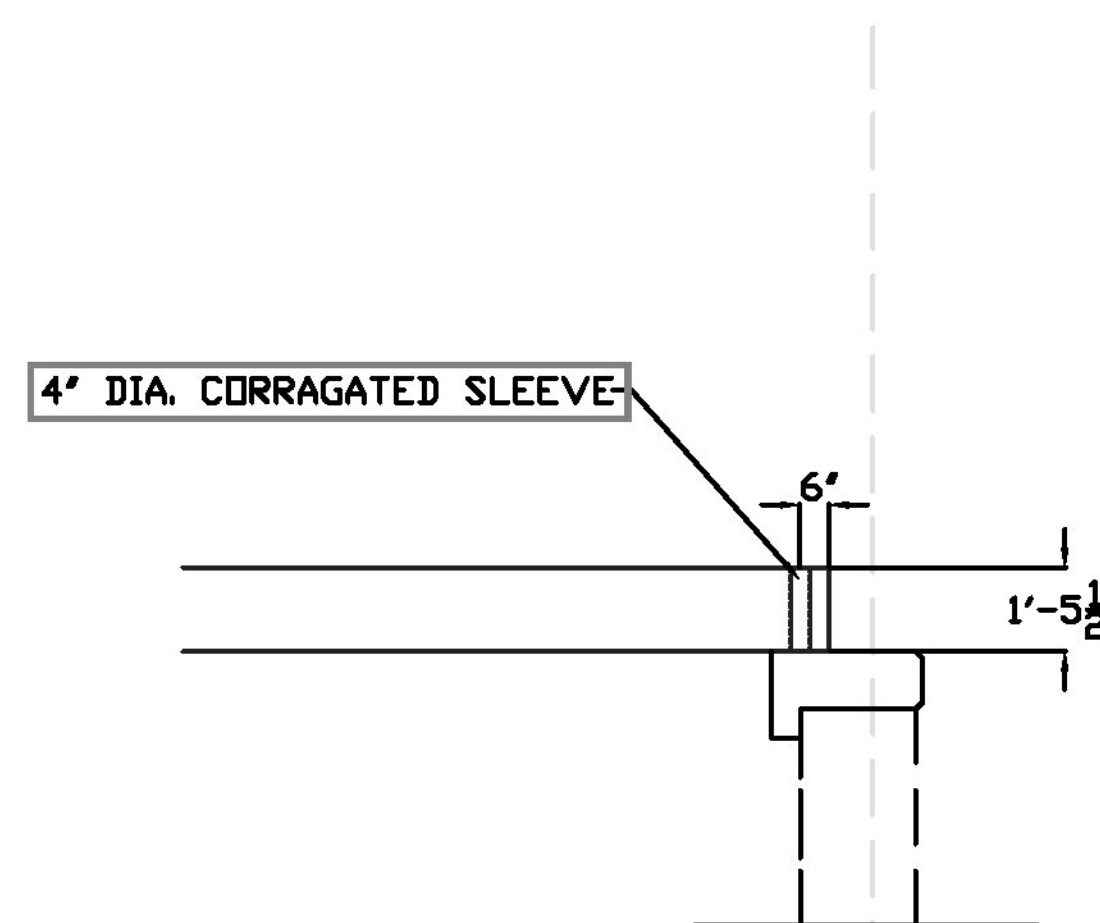


APPROACH SLAB ELEVATION VIEW

***** SPECIAL ATTENTIONS:**
 APPROACH SLAB KEY-WAY REINFORCING BETWEEN ADJACENT SECTIONS (#6 HAIR-PINS) MUST BE OFF-SET 1/2 BAR SPACING TO ALLOW FOR PROPER ALIGNMENT



CLOSURE POUR SECTION



Vermont Agency of Transportation

RECEIVED

Woodstock Village BF 020-2(43) contractor fabricated approach slabs resubmit 1/26/18.pdf

CK'D BY Stephen Coley OK'D BY Rob Young

January 26, 2018

RESUBMIT No Approved
 BY Rob Young DATE 02-06-2018

COLD RIVER BRIDGES, LLC	
10 LANBRO LANE	
TEL 603-756-9800	WALPOLE, NH FAX 603-756-9803
WOODSTOCK BF 020-2(43)	
DETAILS/TYP SECT	SHEET NUMBER
REVISION #1 1/26/18	3
DATE 2/20/17	