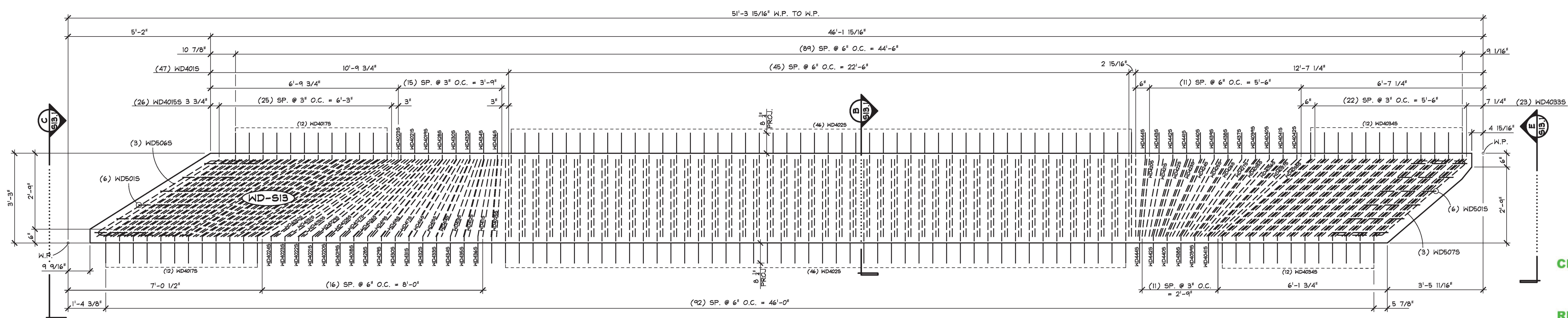
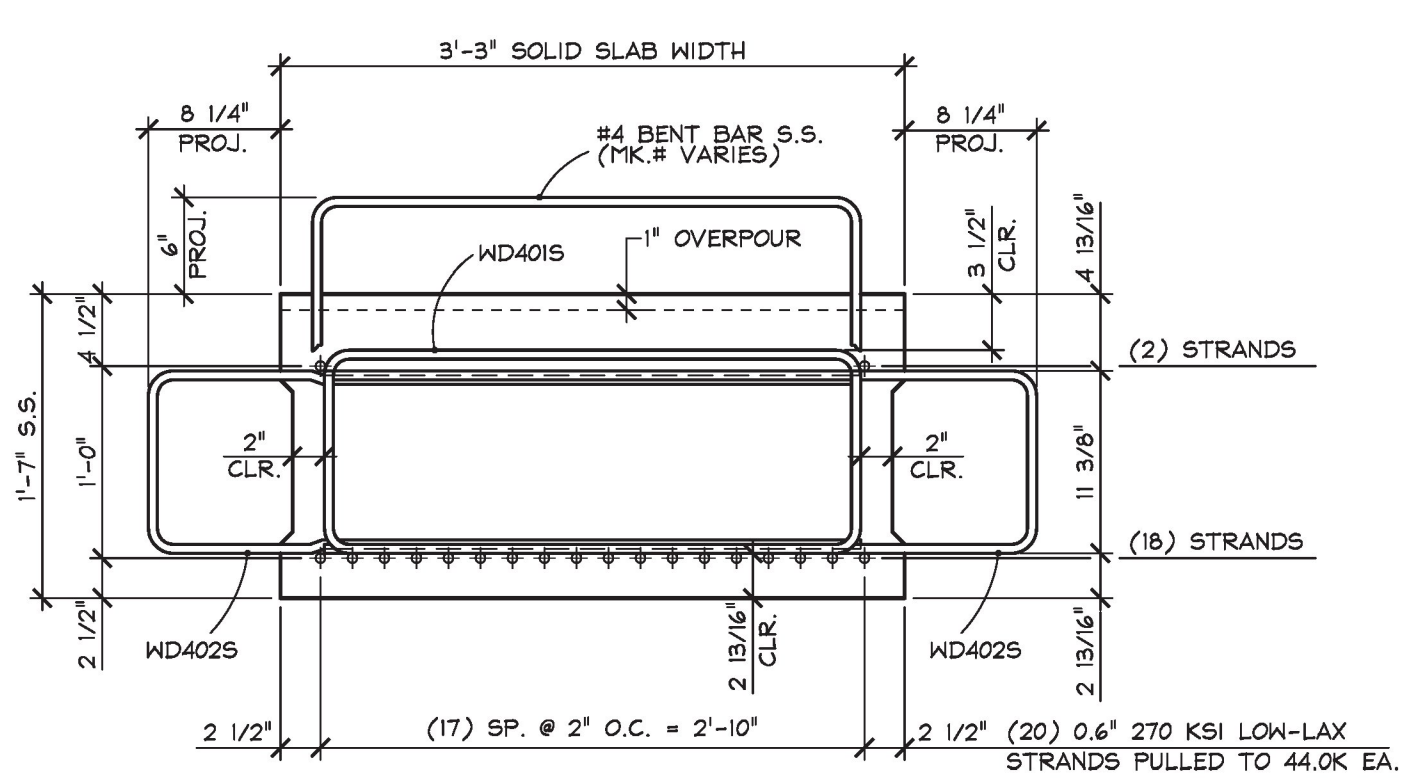


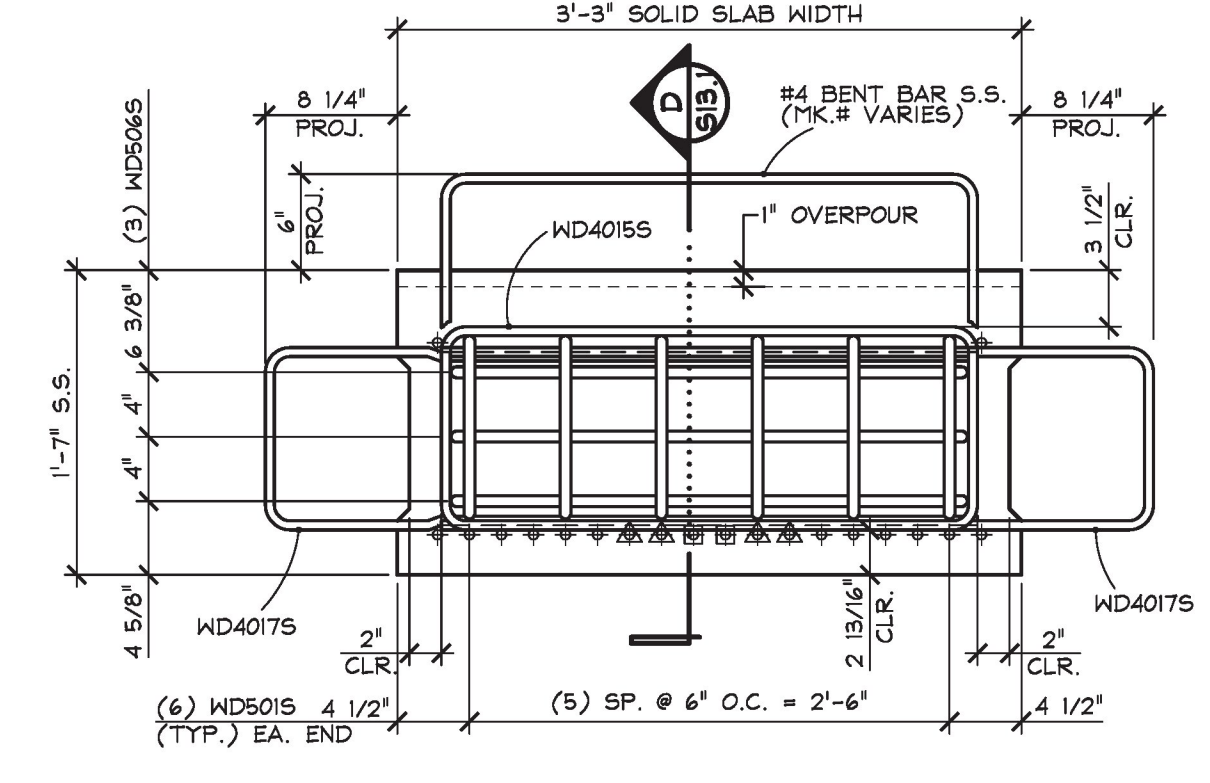
Vermont Agency of Transportation
RECEIVED
 CK'D BY Stephen Coley OK'D BY Rob Young
 February 13, 2017
 RESUBMIT No Approved
 BY Rob Young DATE 02/13/2017



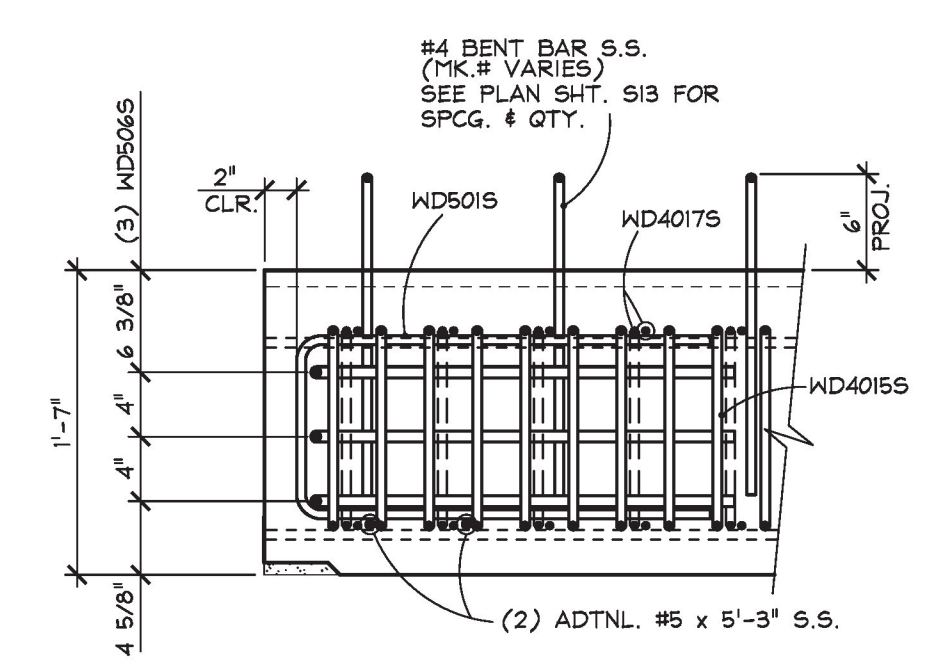
A SOLID SLAB REINFORCING PLAN IN FORM
 S13.1 1/2" = 1'-0"



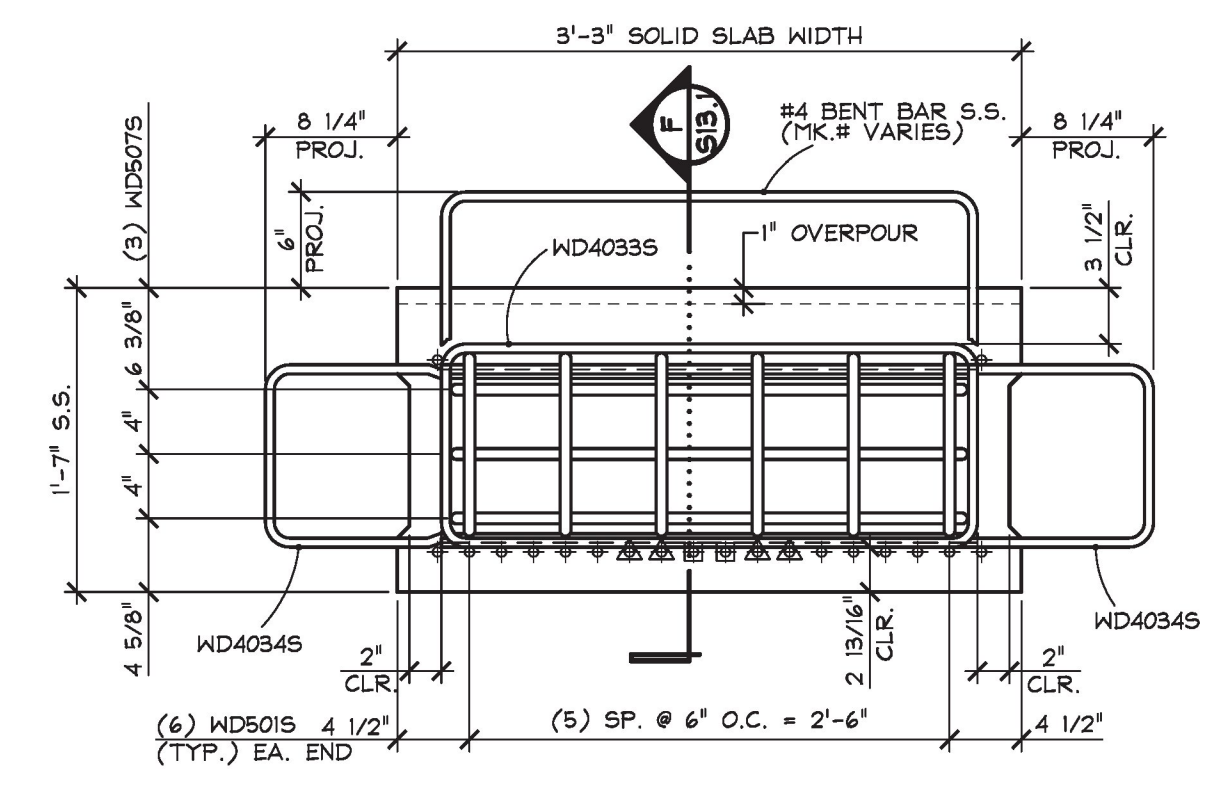
B REINFORCING SECTION
 S13.1 1" = 1'-0"



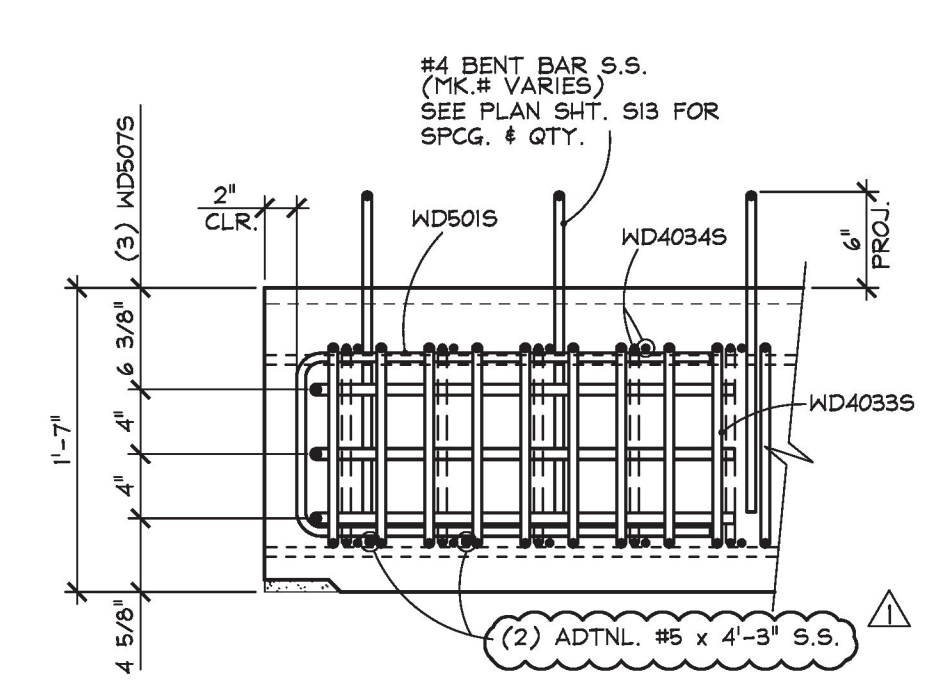
C END REINFORCING SECTION
 S13.1 1" = 1'-0"



D END REINFORCING SECTION
 S13.1 1" = 1'-0"



E END REINFORCING SECTION
 S13.1 1" = 1'-0"



F END REINFORCING SECTION
 S13.1 1" = 1'-0"

① ②

3	5	7	9	11	13	15	17	19	20	18	16	14	12	10	8	6	4
---	---	---	---	----	----	----	----	----	----	----	----	----	----	----	---	---	---

DETENSIONING SCHEDULE
 N.T.S.

▲ STRANDS TO BE DETENSIONED 4'-0" EA. END OF SOLID SLAB
 ■ STRANDS TO BE DETENSIONED 6'-0" EA. END OF SOLID SLAB

ITEM	MARK	DESCRIPTION	WD-S13 QTY.
33	WD4335	#4 BENT BAR (STAINLESS STEEL)	1
34	WD4345	#4 BENT BAR (STAINLESS STEEL)	2
35	WD4355	#4 BENT BAR (STAINLESS STEEL)	1
36	WD4365	#4 BENT BAR (STAINLESS STEEL)	2
37	WD4375	#4 BENT BAR (STAINLESS STEEL)	1
38	WD4385	#4 BENT BAR (STAINLESS STEEL)	2
39	WD4395	#4 BENT BAR (STAINLESS STEEL)	1
40	WD4405	#4 BENT BAR (STAINLESS STEEL)	2
41	WD4415	#4 BENT BAR (STAINLESS STEEL)	1
42	WD4425	#4 BENT BAR (STAINLESS STEEL)	2
43	WD4435	#4 BENT BAR (STAINLESS STEEL)	1
44	WD4445	#4 BENT BAR (STAINLESS STEEL)	2
45			
46	WD4015	#4 BENT BAR (STAINLESS STEEL)	1
47	WD4015	#4 BENT BAR (STAINLESS STEEL)	2
48	WD4020	#4 BENT BAR (STAINLESS STEEL)	1
49	WD4025	#4 BENT BAR (STAINLESS STEEL)	2
50	WD4025	#4 BENT BAR (STAINLESS STEEL)	1
51	WD4025	#4 BENT BAR (STAINLESS STEEL)	2
52	WD4025	#4 BENT BAR (STAINLESS STEEL)	1
53	WD4025	#4 BENT BAR (STAINLESS STEEL)	1
54	WD4025	#4 BENT BAR (STAINLESS STEEL)	1
55	WD4025	#4 STIRRUP (STAINLESS STEEL)	1
56	WD4025	#4 STIRRUP (STAINLESS STEEL)	1
57	WD4025	#4 STIRRUP (STAINLESS STEEL)	1
58	WD4030	#4 STIRRUP (STAINLESS STEEL)	1
59	WD4035	#4 STIRRUP (STAINLESS STEEL)	1
60	WD4035	#4 STIRRUP (STAINLESS STEEL)	1
61	WD4035	#4 STIRRUP (STAINLESS STEEL)	1
62	WD4035	#4 STIRRUP (STAINLESS STEEL)	1
63	WD4035	#4 STIRRUP (STAINLESS STEEL)	1
64	WD4035	#4 STIRRUP (STAINLESS STEEL)	1
65	WD4035	#4 BENT BAR (STAINLESS STEEL)	2
66	WD4040	#4 BENT BAR (STAINLESS STEEL)	1
67	WD4045	#4 BENT BAR (STAINLESS STEEL)	2
68	WD4045	#4 BENT BAR (STAINLESS STEEL)	1
69			
70	WD5015	#5 BENT BAR (STAINLESS STEEL)	12
71	WD5065	#5 BENT BAR (STAINLESS STEEL)	3
72	WD5075	#5 BENT BAR (STAINLESS STEEL)	3
73		#5 x 5'-3" (STAINLESS STEEL)	2
74		#5 x 4'-3" (STAINLESS STEEL)	2

MARK: WD-S13 QTY.: 1 WT.: 17.84 T VOL.: 8.81 cy

MATERIAL LIST / P/S SOLID SLAB

ITEM	MARK	DESCRIPTION	WD-S13 QTY.
1	WD4015	#4 STIRRUP (STAINLESS STEEL)	47
2	WD4025	#4 BENT BAR (STAINLESS STEEL)	92
3			
4			
5			
6			
7	WD4015	#4 STIRRUP (STAINLESS STEEL)	26
8	WD4035	#4 STIRRUP (STAINLESS STEEL)	23
9	WD4015	#4 BENT BAR (STAINLESS STEEL)	24
10	WD4035	#4 BENT BAR (STAINLESS STEEL)	24
11	WD415	#4 STIRRUP (STAINLESS STEEL)	1
12	WD415	#4 STIRRUP (STAINLESS STEEL)	1
13	WD415	#4 STIRRUP (STAINLESS STEEL)	1
14	WD415	#4 STIRRUP (STAINLESS STEEL)	1
15	WD415	#4 STIRRUP (STAINLESS STEEL)	1
16	WD415	#4 STIRRUP (STAINLESS STEEL)	1
17	WD415	#4 STIRRUP (STAINLESS STEEL)	1
18	WD415	#4 STIRRUP (STAINLESS STEEL)	1
19	WD415	#4 STIRRUP (STAINLESS STEEL)	1
20	WD4205	#4 STIRRUP (STAINLESS STEEL)	1
21	WD4215	#4 STIRRUP (STAINLESS STEEL)	1
22	WD4225	#4 STIRRUP (STAINLESS STEEL)	1
23	WD4235	#4 STIRRUP (STAINLESS STEEL)	1
24	WD4245	#4 STIRRUP (STAINLESS STEEL)	1
25	WD4255	#4 STIRRUP (STAINLESS STEEL)	1
26	WD4265	#4 STIRRUP (STAINLESS STEEL)	1
27	WD4275	#4 STIRRUP (STAINLESS STEEL)	1
28	WD4285	#4 BENT BAR (STAINLESS STEEL)	2
29	WD4295	#4 BENT BAR (STAINLESS STEEL)	1
30	WD4305	#4 BENT BAR (STAINLESS STEEL)	2
31	WD4315	#4 BENT BAR (STAINLESS STEEL)	1
32	WD4325	#4 BENT BAR (STAINLESS STEEL)	2

SHOP NOTE:
 F_c = 8,000 PSI
 F_{ci} = 5,500 PSI
 MIX #430M ROCK

APPROVAL STAMP:

J.P. CARRARA & SONS INC.
 Precast & Prestress Manufacturer
 2484 CASE STR., MIDDLEBURY, VERMONT 05753 Phone:(802)388-6361 Fax:(802)388-9010

Cold River Bridges CONTRACTOR
 WALPOLE, NEW HAMPSHIRE

STATE OF VERMONT AGENCY OF TRANSPORTATION
 COUNTY OF WINDSOR

DATE: JAN. 18, 2018
 SCALE: NOTED
 CHKD: A.S. DFTM: T.D.
 JOB NO: 23522-017

WOODSTOCK VILLAGE
 VT. ROUTE 4 (CLASS 1), VILLAGE PRINCIPAL ARTERIAL
 BRIDGE NO.: 51 PROJECT NO.: BF 020-2 (43)

SOLID SLAB REINF. DETAILS

DWG. NO: S13.1

Production/Record Set
 2.13.18
 J.P. CARRARA & SONS, INC.
 MIDDLEBURY, VT 05753

2/12/18 REVISED AS PER ENGINEERS COMM. T.D.