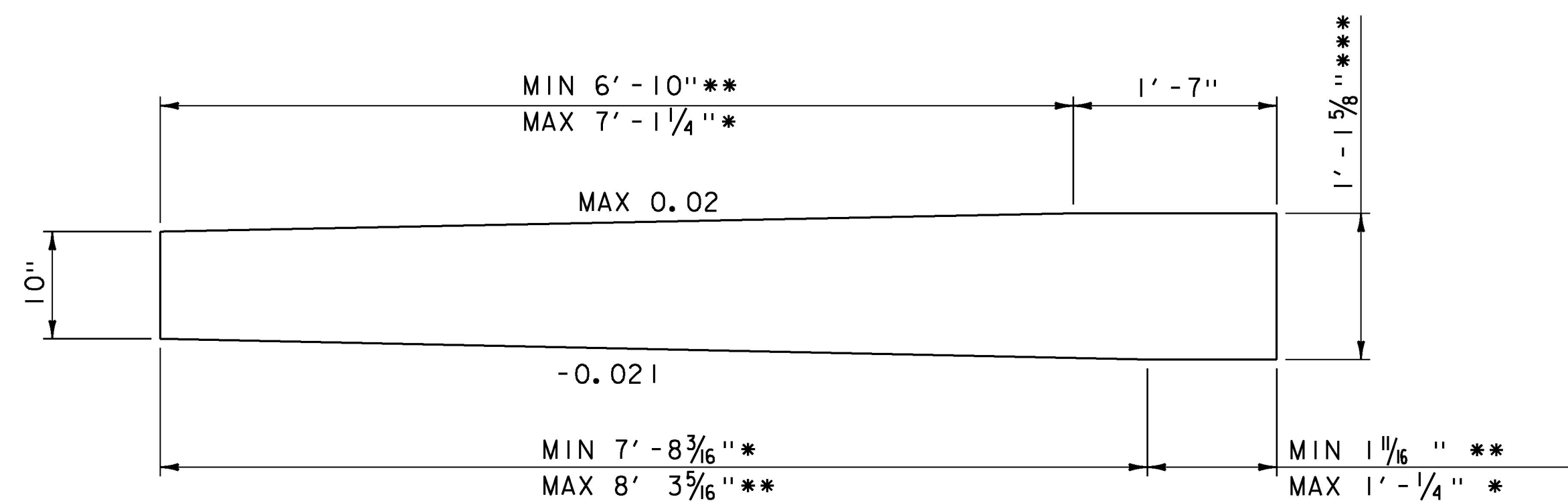


LEFT BRIDGE SIDEWALK

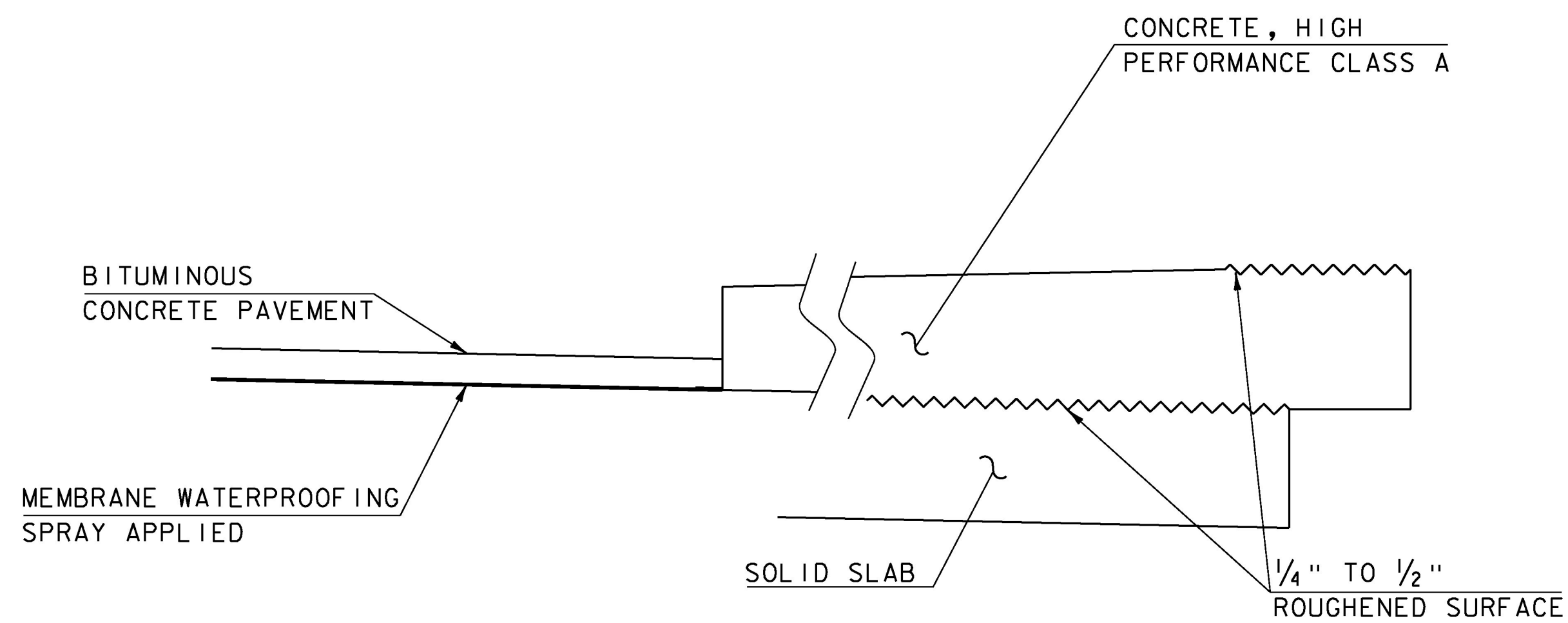
SCALE 1" = 1'-0"



RIGHT BRIDGE SIDEWALK

SCALE 1" = 1'-0"

- * LOCATED AT STA 334+15.61
- ** LOCATED AT STA 334+65.31
- *** THICKNESS MAY VARY

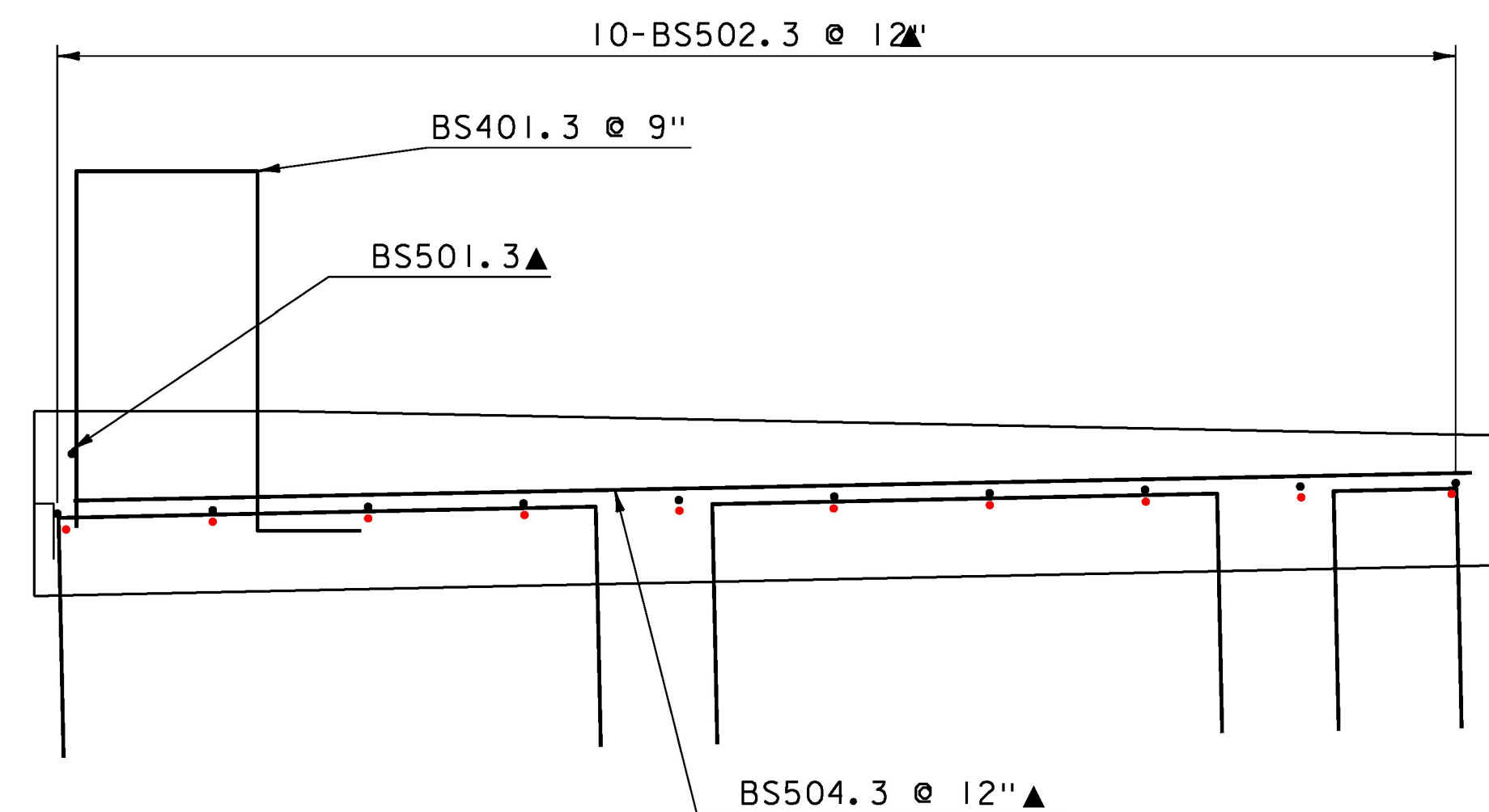


TYPICAL SIDEWALK THROUGH CONCRETE SIDEWALK CONSTRUCTION JOINT

NTS

SIDEWALK NOTES:

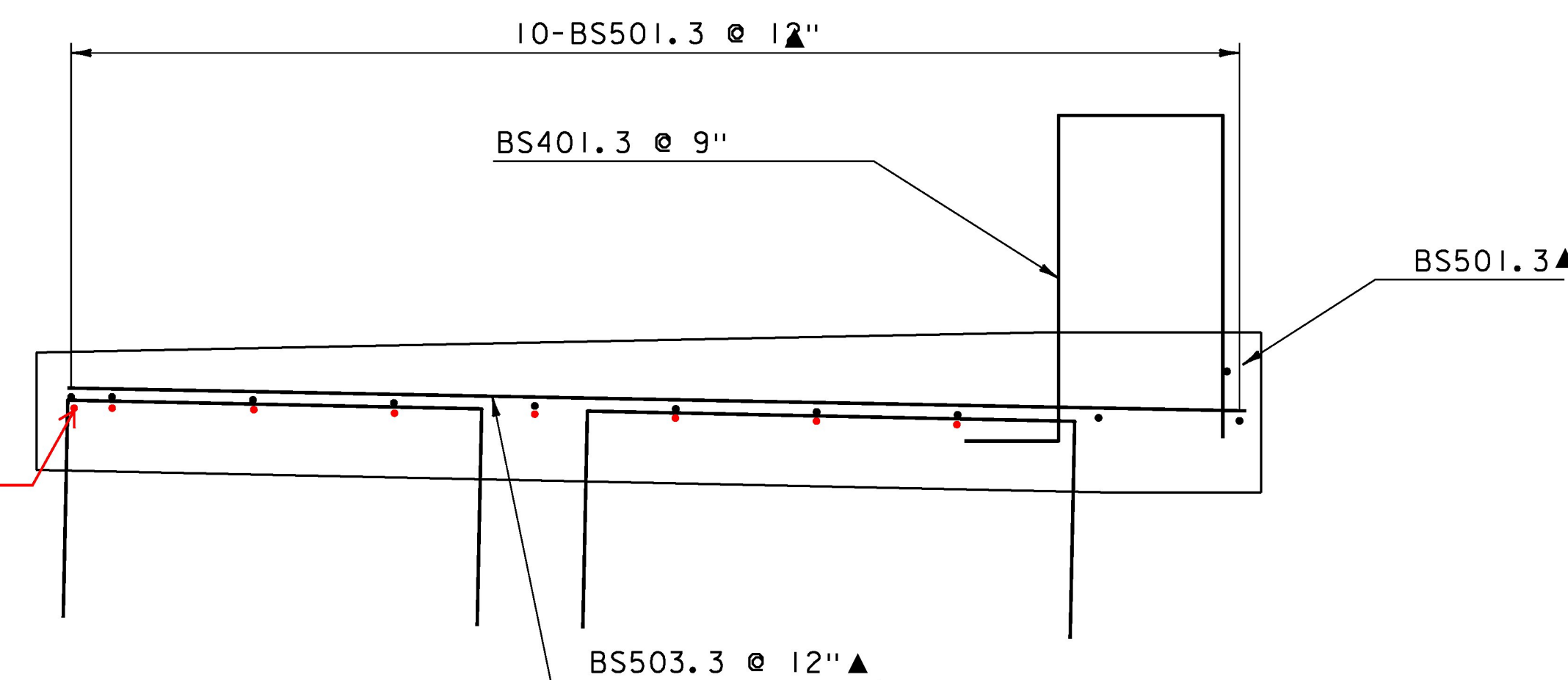
1. THE SIDEWALKS SHALL BE CONSTRUCTED WITH DUMMY JOINTS IN ACCORDANCE WITH SUBSECTION 618.03 (e). CONCRETE SIDEWALKS MAY BE PLACED IN ONE CONTINUOUS OPERATION.
2. LONGITUDINAL REINFORCING SHALL BE CONTINUOUS THROUGH BRIDGE SIDEWALK.
3. PLACEMENT OF BAR BS401.3 SHOULD BE BASE ON BRIDGE RAIL DRAWINGS.



LEFT BRIDGE SIDEWALK REINFORCING

SCALE 1" = 1'-0"

REINFORCING BARS MOVED TO BOTTOM OF MAT.



RIGHT BRIDGE SIDEWALK REINFORCING

SCALE 1" = 1'-0"

NOTES:

2'-2" BAR LAP UNLESS OTHERWISE SPECIFIED ON PLANS

1 1/2" CLEAR, UNLESS OTHERWISE SPECIFIED ON PLANS.

▲ = CUT IN FIELD

REINFORCING IN THE BRIDGE SIDEWALK WILL BE PAID UNDER ITEM 507.13 REINFORCING STEEL, LEVEL III

PROJECT NAME: WOODSTOCK VILLAGE

PROJECT NUMBER: BF 020-2(43)

FILE NAME: s13j280sup.dgn

PROJECT LEADER: R. YOUNG

DESIGNED BY: S. COLEY

BRIDGE SIDEWALK DETAILS

PLOT DATE: 09-AUG-2017

DRAWN BY: S. COLEY

CHECKED BY: W. LAMMER

SHEET 38 OF 53