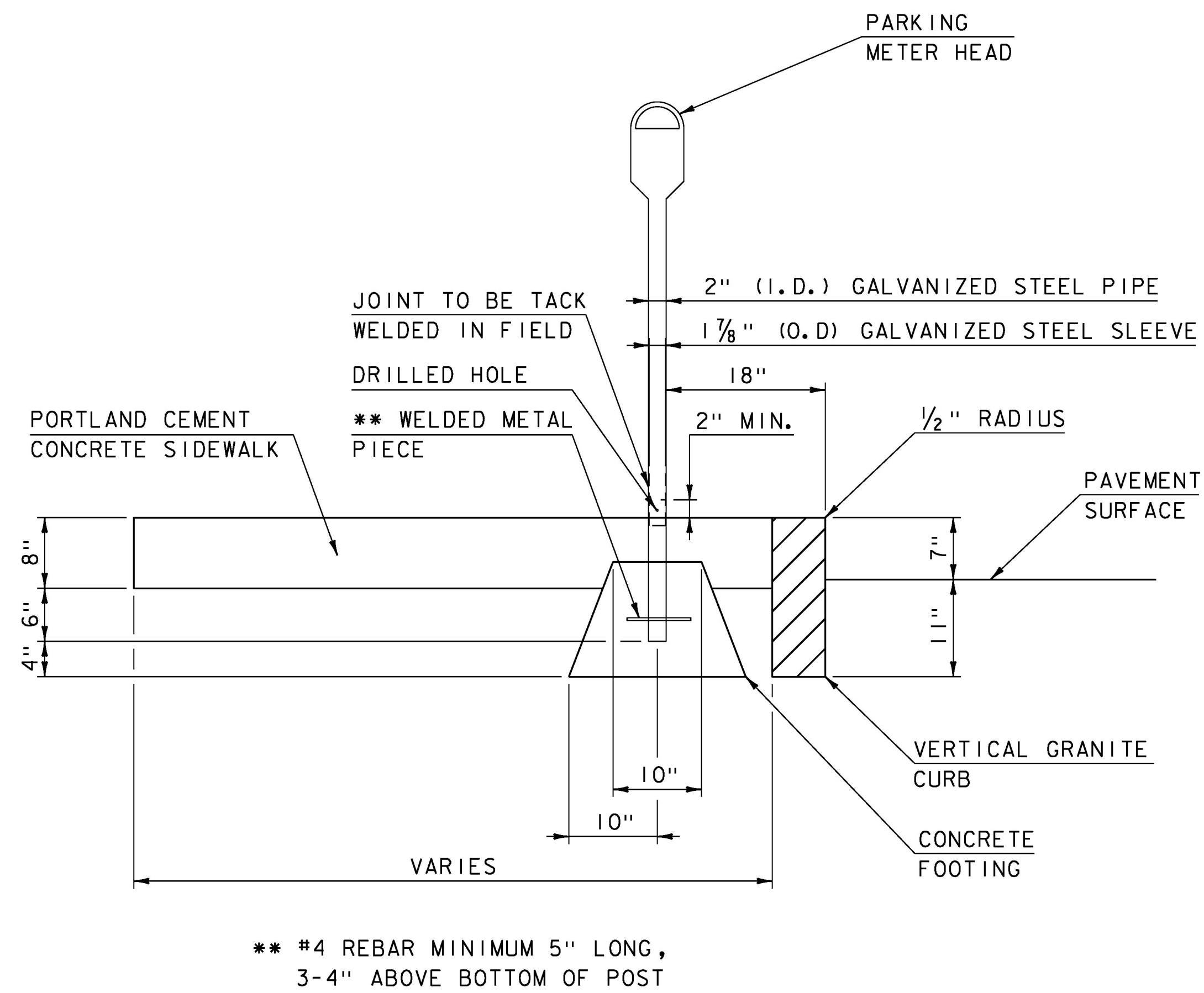


BUILDING ENTRANCE AT STA. 334+66.50 RT

SCALE: 1/4" = 1'-0"



TYPICAL PARKING METER POST INSTALLATION

SCALE: 1" = 1'-0"

NOTES:

- 1) SLOPE OF THE SIDEWALK SHALL MATCH THE 2% SLOPE OF THE SIDEWALK ON THE BRIDGE TO A POINT ON A STRAIGHT LINE BETWEEN THE FACE OF THE BRIDGE RAIL AND THE CORNER OF THE BUILDING.
- 2) SLOPE THE SIDEWALK DOWN TO THE EXISTING ELEVATION AT THE STAIRS FROM THE POINT WHERE THE 2% SLOPE ENDS.
- 3) PROPOSED SIDEWALK TO END ABOUT 3 INCHES FROM THE EXISTING STAIRS.
- 4) MINIMUM DEPTH OF THE SUBBASE BELOW THE SIDEWALK IS TO BE 1 FOOT.
- 5) DEPTH OF MATERIAL REMOVAL SHALL VARY FROM THE REQUIRED DEPTH AT BRIDGE SEAT TO THE MINIMUM DEPTH.
- 6) THE STONE RETAINING WALL AT STA 334+63.13 SHALL BE REMOVED AND RESET. THE LIMITS WILL BE ONE FOOT BELOW THE PROPOSED BRIDGE SEAT BOTTOM MOVING UP AT AN ANGLE UNTIL IT MEETS THE SIDEWALK THAT IS TO BE LEFT.

NOTE: Slope of the sidewalk in front of existing building on ROW parcel 3, leased at the time of construction by PI Brick Oven Trattoria, from approximately STA 334+74 - 335+17 RT was controlled by the building foundation, entrance, and concrete patio.

PROJECT NAME: WOODSTOCK VILLAGE

PROJECT NUMBER: BF 020-2(43)

FILE NAME: s13j280sidewalk.dgn

PROJECT LEADER: R. YOUNG

DESIGNED BY: S. COLEY

SIDEWALK DETAILS

PLOT DATE: 18-JUL-2017

DRAWN BY: S. COLEY

CHECKED BY: W. LAMMER

SHEET 13 OF 53