

GPS CONTROL POINTS

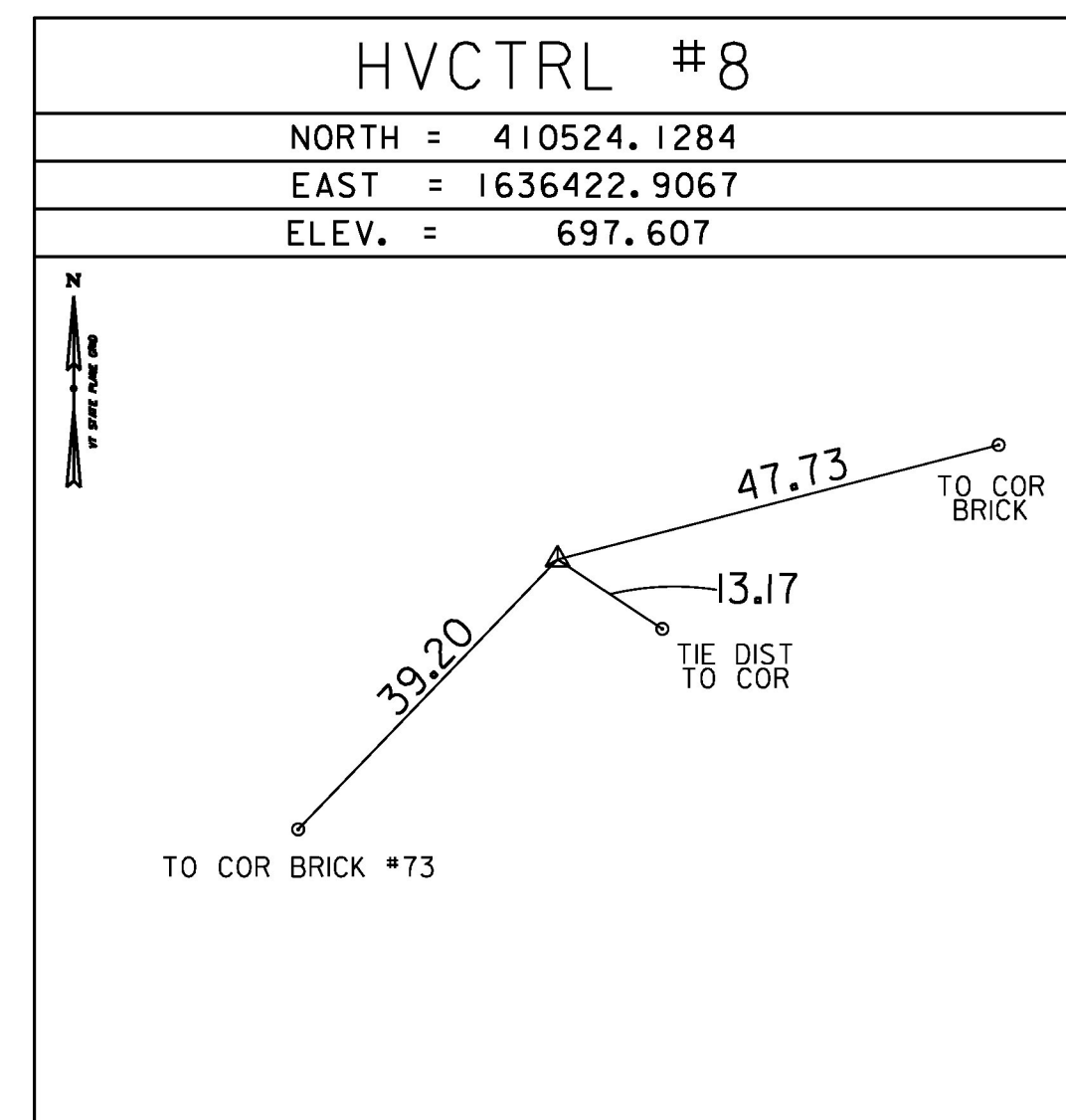
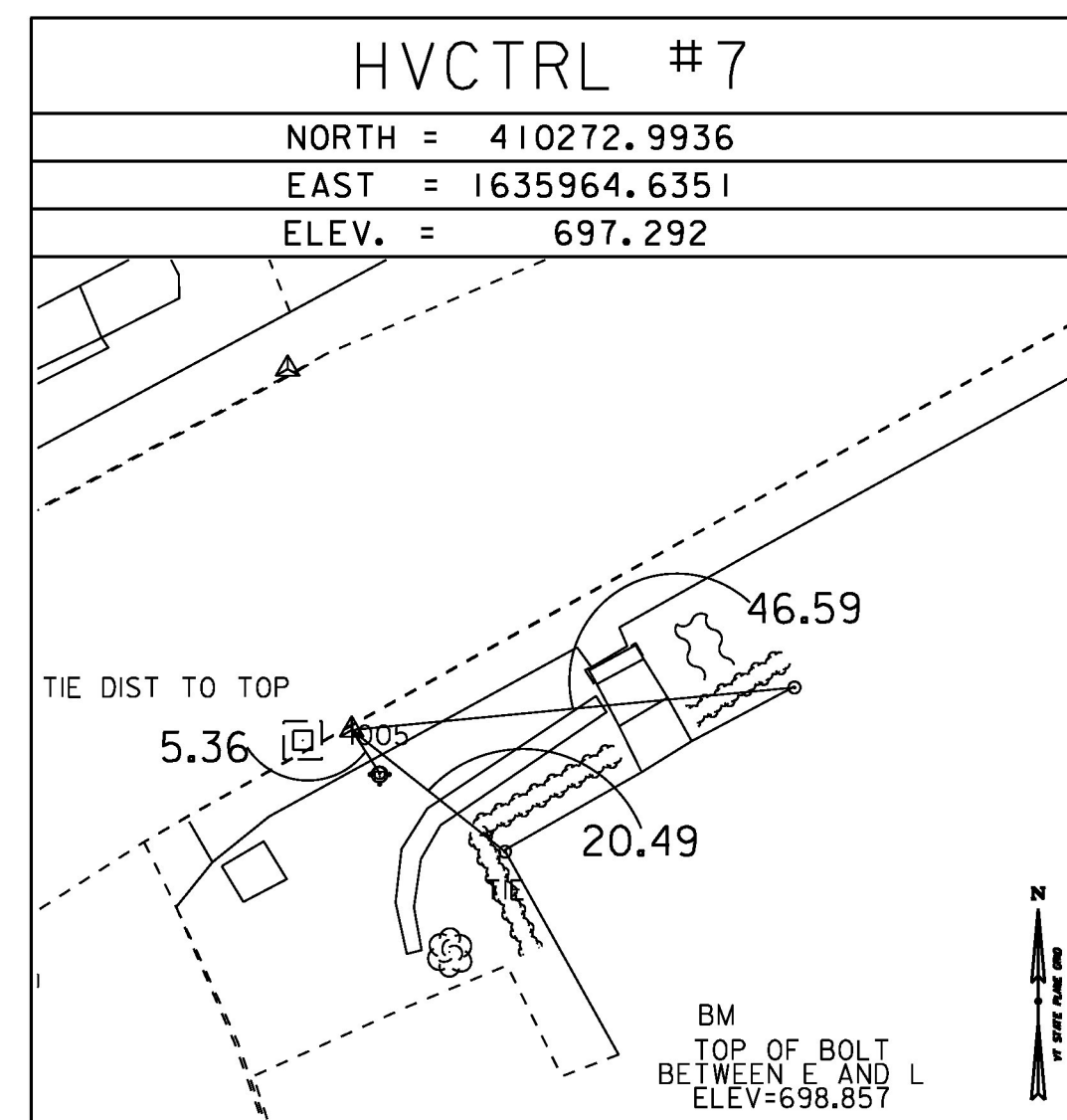
PT #1 B94058
 NORTH = 412873.7600
 EAST = 1639247.4000
 ELEV. = 703.100

GENERAL LOCATION, WOODSTOCK, ABOUT 1 MI (1.6 KM) NORTHEAST OF WOODSTOCK VILLAGE, ABOUT 9.5 MI (15.3 KM) WEST OF WHITE RIVER JUNCTION. TO REACH FROM THE INTERSECTION OF U.S. ROUTE 4 AND VT ROUTE 12 NORTH IN THE CENTER OF WOODSTOCK VILLAGE GO EAST ALONG U.S. ROUTE 4 FOR 1.1 MI (1.8 KM) TO THE INTERSECTION OF A PAVED ENTRANCE DRIVE TO THE CENTRAL VERMONT PUBLIC SERVICE CORPORATION AND THE MARK ON THE LEFT IN A MOWED AREA IN THE NORTHWEST QUADRANT OF THE INTERSECTION. THE MARK IS 5.9 M (19.4 FT) NORTH OF AND ABOUT LEVEL WITH THE NORTH EDGE OF PAVEMENT OF U.S. ROUTE 4, 2.1 M (6.9 FT) NORTHWEST OF THE NORTHWEST EDGE OF PAVEMENT OF THE DRIVE TO CVPS, 4.1 M (13.5 FT) EAST OF THE SOUTHEAST CORNER OF A WOOD CRIB SIGN SUPPORT FOR A CVPS SIGN, AND 4.6 M (15.1 FT) SOUTHWEST OF A FIBERGLASS WITNESS POST AND POLE NO. 9A, SET FLUSH WITH THE GROUND SURFACE IN THE TOP OF A 30-CM DIAMETER CONCRETE MONUMENT Poured TO A DEPTH OF 1.8 M.

PT #2 B94057
 NORTH = 411766.6800
 EAST = 1638855.0200
 ELEV. = 702.350

GENERAL LOCATION, WOODSTOCK VILLAGE, VT. TO REACH FROM THE INTERSECTION OF U.S. ROUTE 4 AND VT ROUTE 12 NORTH IN THE CENTER OF WOODSTOCK VILLAGE GO EAST ALONG U.S. ROUTE 4 FOR 0.8 MI (1.3 KM) TO THE WOODSTOCK NATIONAL BANK AND THE MARK ON THE LEFT IN A MOWED GRASS STRIP BETWEEN U.S. ROUTE 4 AND THE PAVED BANK PARKING LOT, 2.5 M (8.2 FT) NORTHWEST OF AND 0.1 M (0.3 FT) LOWER THAN THE NORTHWEST EDGE OF PAVEMENT OF U.S. ROUTE 4, 1.4 M (4.6 FT) SOUTHWEST OF THE SOUTHWEST EDGE OF THE PAVED BANK PARKING LOT, 35.8 M (117.5 FT) NORTHEAST OF THE EAST CORNER OF THE BANK, 17.4 M (57.1 FT) SOUTH OF A FLAGPOLE, AND 15.8 M (51.8 FT) SOUTHWEST OF A FIBERGLASS WITNESS POST. IT IS SET FLUSH WITH THE GROUND SURFACE IN THE TOP OF A 30-CM DIAMETER CONCRETE MONUMENT Poured TO A DEPTH OF 1.8 M.

TRAVERSE TIES



PT #10 B94055
 NORTH = 410658.3000
 EAST = 1636526.6400
 ELEV. = 696.270

TO REACH FROM THE INTERSECTION OF U.S. ROUTE 4 AND VT ROUTE 12 NORTH IN THE CENTER OF WOODSTOCK VILLAGE GO EAST ALONG U.S. ROUTE 4 FOR 0.2 MI (0.3 KM) TO THE MARK ON THE LEFT IN A TRIANGULAR SHAPED PARK BETWEEN U.S. ROUTE 4 AND PLEASANT STREET. THE MARK IS 10.2 M (33.5 FT) NORTH OF AND ABOUT 0.1 M (0.3 FT) HIGHER THAN THE NORTH CURB OF U.S. ROUTE 4 (CENTRAL STREET), 8.9 M (29.2 FT) SOUTH OF THE SOUTH CURB OF PLEASANT STREET, 5.5 M (18.0 FT) EAST OF THE EAST END OF A CANNON BARREL, AND 6.2 M (20.3 FT) WEST OF A FLAGPOLE. IT IS SET FLUSH WITH THE GROUND SURFACE IN THE TOP OF A 30-CM DIAMETER CONCRETE MONUMENT Poured TO A DEPTH OF 1.8 M.

ALIGNMENT TIES

NORTH =
EAST =
ELEV. =

NORTH =
EAST =
ELEV. =

NORTH =
EAST =
ELEV. =

NORTH =
EAST =
ELEV. =

NORTH =
EAST =
ELEV. =

DATUM
 VERTICAL NAVD88
 HORIZONTAL NAD83(2011)
 ADJUSTMENT COMPASS

PROJECT NAME: WOODSTOCK VILLAGE
 PROJECT NUMBER: BF 020-2(43)
 FILE NAME: s13j280+tie.dgn PLOT DATE: 09-AUG-2017
 PROJECT LEADER: R. YOUNG DRAWN BY: C. CYR
 DESIGNED BY: VTRANS CHECKED BY: W. LAMMER
 TIE SHEET SHEET 10 OF 53