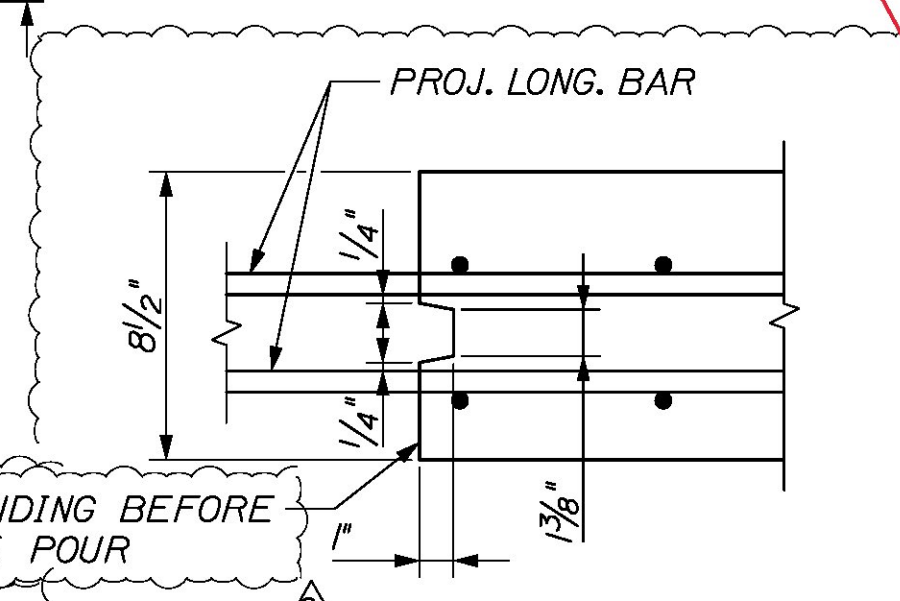
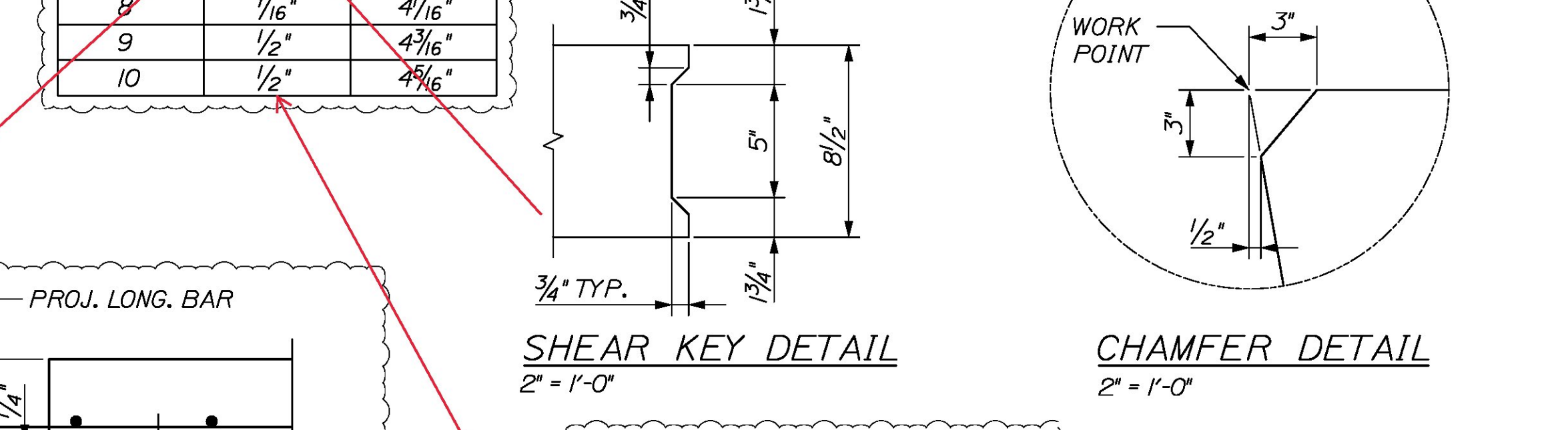
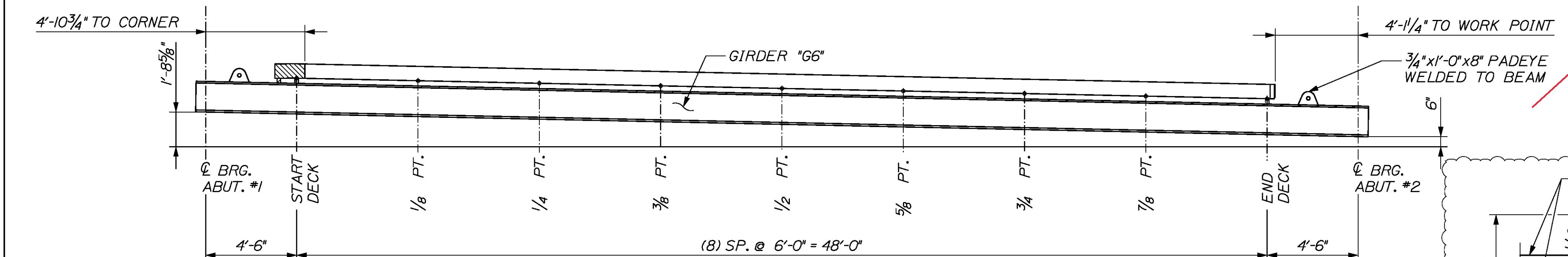


TEMP. REFERENCE LINE MEASURED 6" FROM ABUT #2 END OF G5 & G6

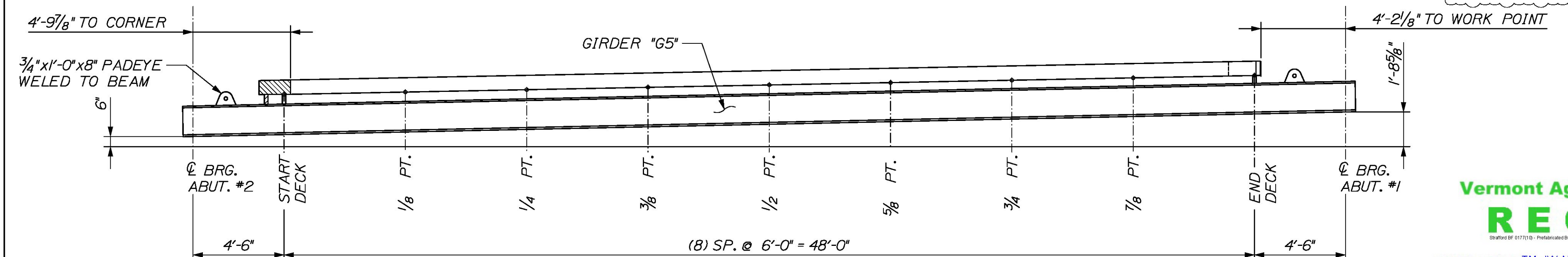
SECTION	"A"	"B"
1	3/8"	3/16"
2	3/8"	3/16"
3	3/8"	3/16"
4	3/8"	3/16"
5	1/16"	3/16"
6	7/16"	3/16"
7	7/16"	3/16"
8	7/16"	4/16"
9	1/2"	4/16"
10	1/2"	4/16"



DESIGN NOTES:
 CONCRETE f'c @ FINAL = 4,000 PSI
 f'c @ LIFTING = 4,000 PSI
 FINISH -
 TOP - SMOOTH TROWEL U.N.O.
 SIDES - FORM FINISH
 BOTTOM - FORM FINISH
 (1) PBU-3 REQ'D APPROX. WT - 34.8 TONS

BOX OF DECK SLAB TABLE - PBU-3

LOCATION	"H5"	"H6"
START DECK	2'-7 1/4"	3'-4 1/2"
1/8 POINT	2'-10 3/8"	3'-3 7/8"
1/4 POINT	3'-1 1/8"	3'-3 3/8"
3/8 POINT	3'-1 3/4"	3'-2"
1/2 POINT	3'-3 3/8"	3'-3/4"
5/8 POINT	3'-4 1/8"	2'-11"
3/4 POINT	3'-4 3/4"	2'-9 1/8"
7/8 POINT	3'-5 1/4"	2'-7"
END DECK	3'-6 1/2"	2'-4 3/8"



BILL OF MATERIALS FOR PBU-3

ITEM #	QTY	TOTAL	DESCRIPTION
1	1	1	STEEL ASSEMBLY ~ GIRDERS "G5" & "G6"
2	13.5 CY	13.5 CY	VA07 CLASS "A" CONCRETE
3	4	4	3/4" x 8" x 1'-0" STEEL PADEYE WELDED TO GIRDER

Vermont Agency of Transportation
RECEIVED
 CK'D BY TM, JW, NVDB, KM, RK OK'D BY JG
 April 12, 2017
 RESUBMIT No Approved AsNoted
 BY K. Higgins DATE 04/13/17

This information is unnecessary as Beam Profiles will need to be submitted prior to forming.

CALDERWOOD ENGINEERING, ETC.
 STRUCTURAL ENGINEERING • DETAILING SERVICES
 222 RIVER RD., RICHMOND, ME 04357 PH/FX (207) 737-2007 / 737-2008
 PREPARED FOR: **MILLER CONSTRUCTION**
 STRAFFORD BF 01777(10)

STATE OF VERMONT
 No. 8714
 JEFFREY F. CALDERWOOD
 LICENSED PROFESSIONAL ENGINEER

DATE	BY	DESCRIPTION
JAN 2017	ETC	DESIGN-DETAILED
		CHECKED-REVIEWED
		REVISIONS 1
		REVISIONS 2
		REVISIONS 3
		REVISIONS 4
		FIELD CHANGES

STRAFFORD VERMONT
ABUTMENT SHOP DETAILS
PBU-3 DIMENSIONAL DETAILS

SHEET NUMBER **4**