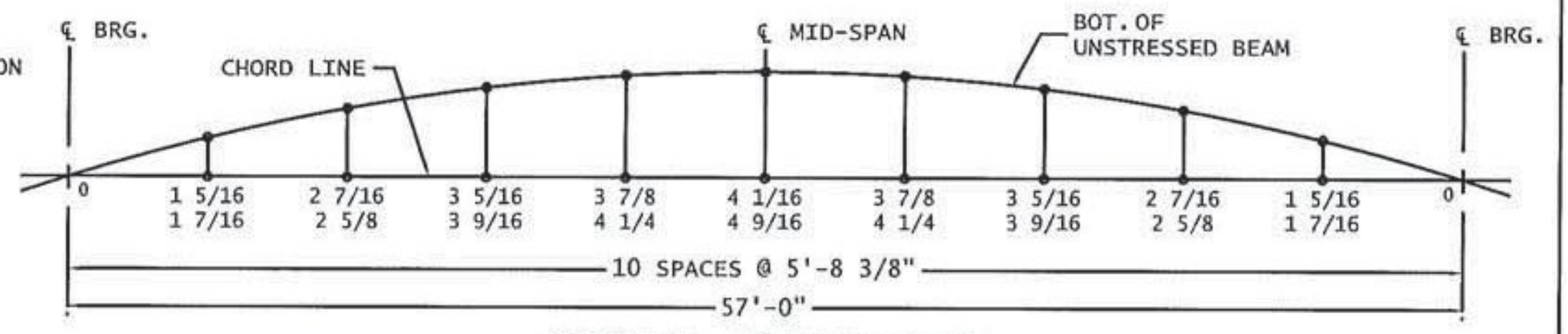
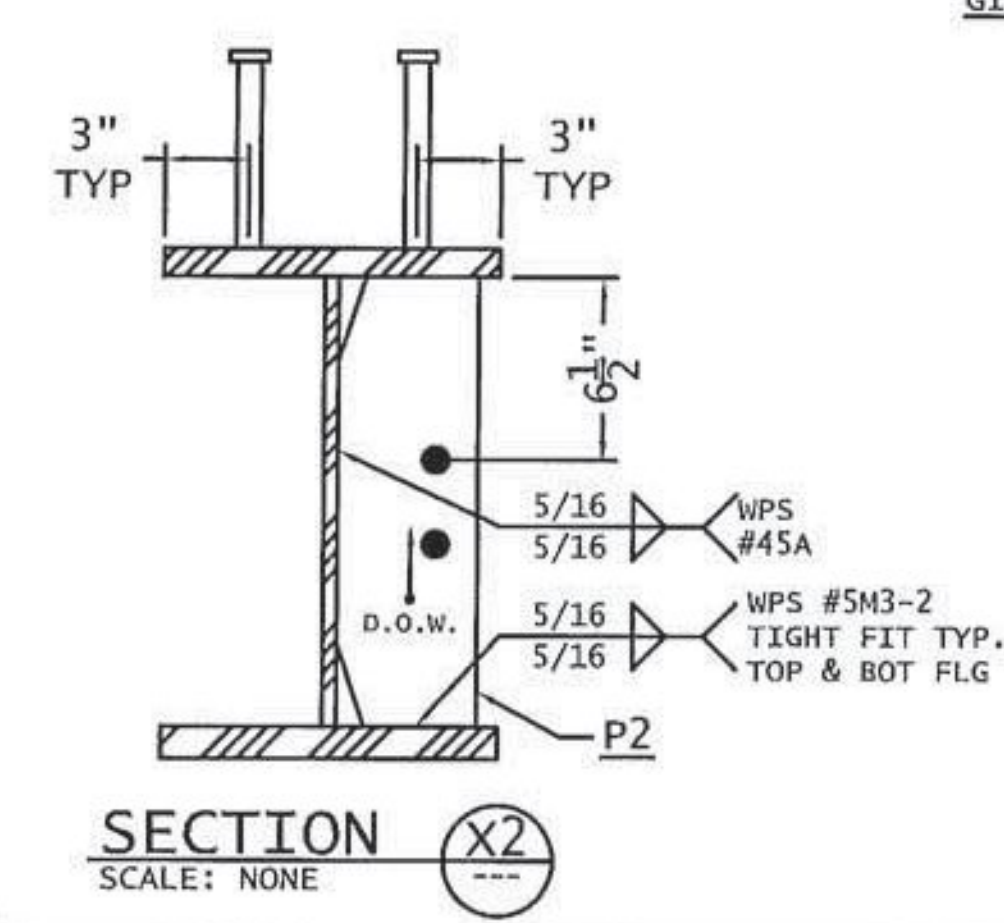
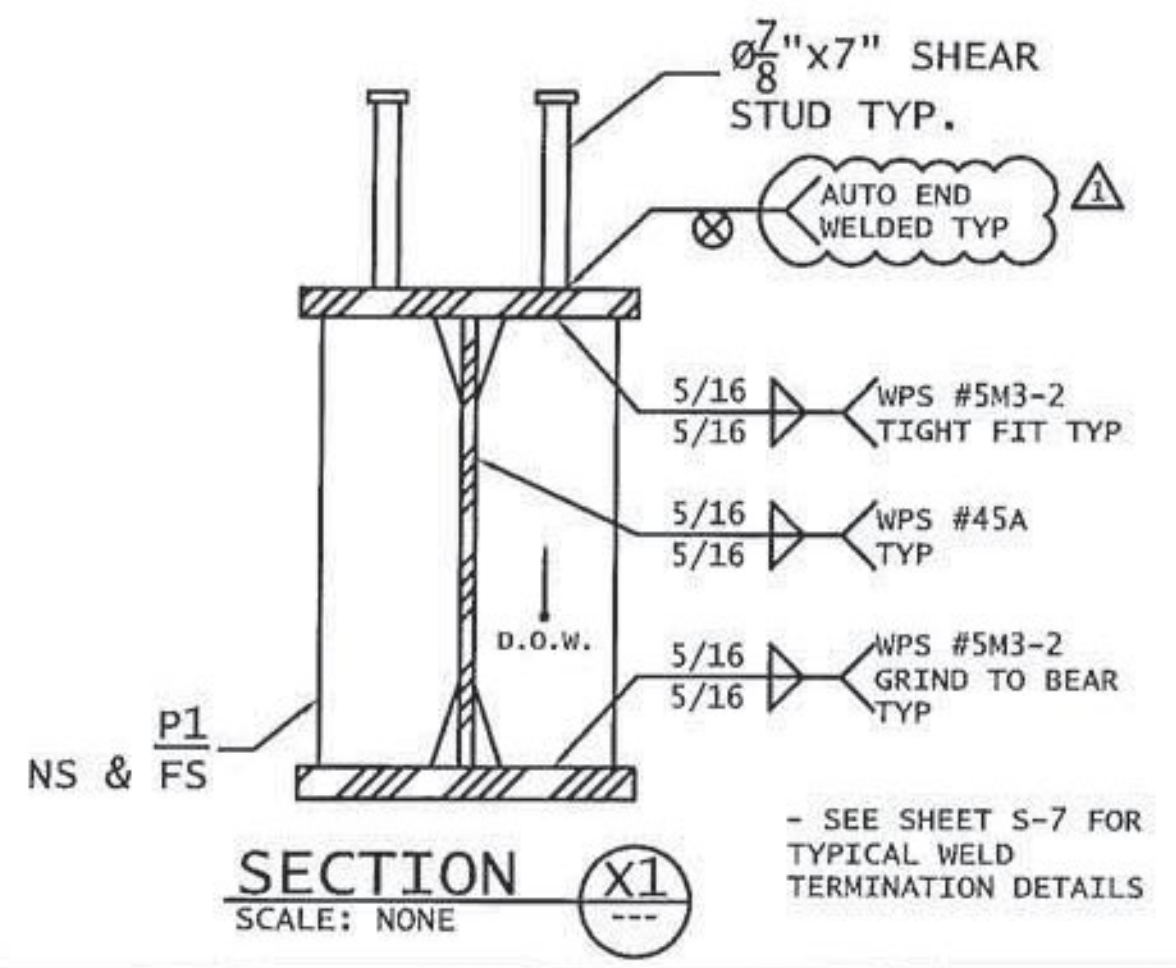


Vermont Agency of Transportation  
**RECEIVED**  
 CK'D BY RSF, TAM OK'D BY JDG  
 February 9, 2017  
 RESUBMIT No Approved  
 BY Kristin Higgins DATE 2/14/2017

THE TWO CAMBER DIMENSIONS REPRESENT THE FOLLOWING:  
 -TOP DIMENSION = TOTAL CAMBER IN FINISHED BEAM  
 -BOTTOM DIMENSION = TOTAL CAMBER @ TIME OF FABRICATION



BILL OF MATERIALS									
SHIP MARK	SHIP QTY	PIECE MARK	PC. QTY	DESCRIPTION	LENGTH		WT. lbs. ea.	WT. lbs. tot.	MAT'L
					Ft.	In.			
G6	1			GIRDER ASSEMBLY	58	13/16	6704.3	6704.3	
		WP6	1	PL 1/2 " x 16 "	58	13/16	1580.4	1580.4	CVN
		TF6	1	PL 1 " x 12 "	58	9/16	2369.7	2369.7	CVN
		BF6	1	PL 1 1/8 " x 12 "	58	9/16	2665.9	2665.9	CVN
		P1	4	PL 1/2 " x 5 "	1	4	10.9	43.6	
		P2	4	PL 1/2 " x 5 "	1	4	10.9	43.6	
		DB1	1	PL 1/4 " x 3 1/8 "	0	8 5/8	1.1	1.1	
			138	7/8" DIA. SHEAR STUD	0	7			
TOTAL WEIGHT =							6704.3		



GIRDERS G1 - G6 CAMBER DIAGRAM UNITS IN INCHES			
FINISH:	HOT-DIP GALVANIZED		
MATERIAL:	AASHTO M270 GR. 50		
HOLES:	Ø 1/2" U.N.O		
ELECTRODES:	PER WELD PROCEDURE	REVISOR	1/6/17
WELDS:	PER WELD PROCEDURE	ISSUED FOR APPROVAL	12/6/16
SURFACE PREP:	SSPC-SP6	No.	Revision
Author:	ARC ENTERPRISES INC.	Detailer:	DRAFTWORKS DETAILING 11 CHESTNUT ST. AMESBURY, MA
Job Number:	16-181	Shop Drawing:	GIRDER G6 DETAILS
Original Submitted Date:	12/6/16	Sheet No.:	8 OF 10
Drawn By:	DAP	Checked By:	BLB
		QC:	MILLER CONSTRUCTION
			S-6