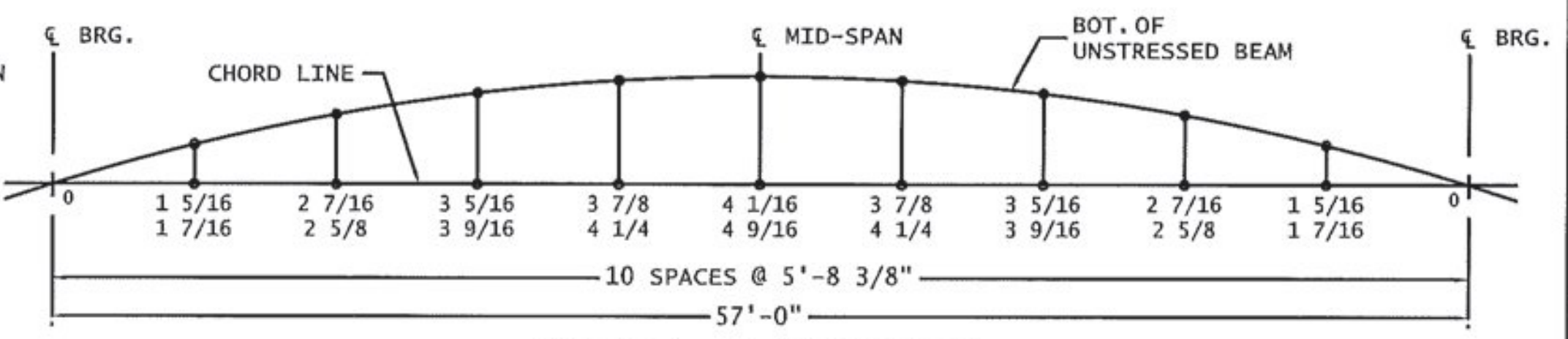
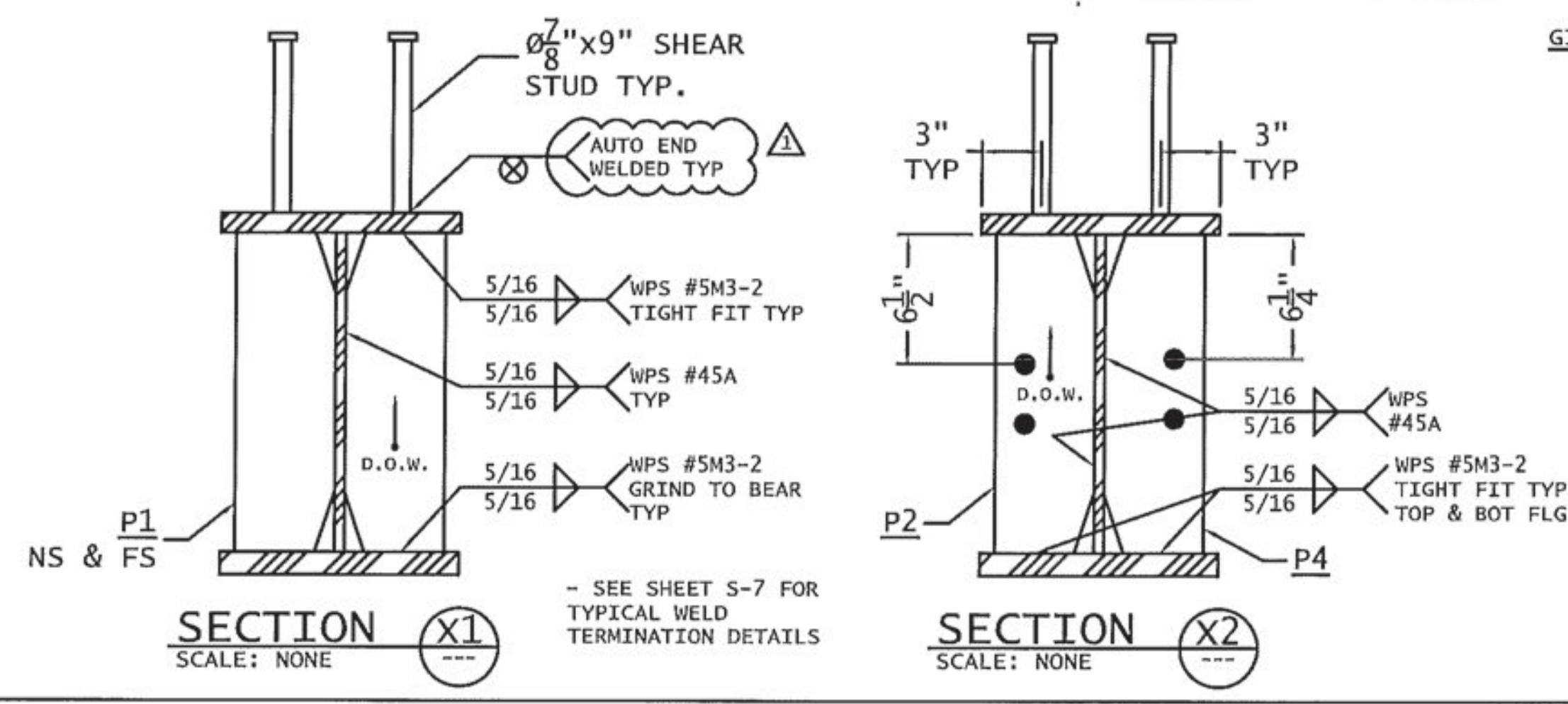


Vermont Agency of Transportation  
**RECEIVED**  
 CK'D BY RBF, TAM OK'D BY JDG  
 February 9, 2017  
 RESUBMIT No Approved  
 BY Kristin Higgins DATE 2/14/2017

THE TWO CAMBER DIMENSIONS REPRESENT THE FOLLOWING:  
 -TOP DIMENSION = TOTAL CAMBER IN FINISHED BEAM  
 -BOTTOM DIMENSION = TOTAL CAMBER @ TIME OF FABRICATION



BILL OF MATERIALS										
SHIP MARK	SHIP QTY	PIECE MARK	PC. QTY	DESCRIPTION	LENGTH		WT. lbs. ea.	WT. lbs. tot.	MAT'L	
					Ft.	In.				
G5	1			GIRDER ASSEMBLY	58	13/16	6746.9	6746.9		
		WP5	1	PL 1/2 " x 16 "	58	13/16	1580.4	1580.4	CVN	
		TF5	1	PL 1 " x 12 "	58	9/16	2369.7	2369.7	CVN	
		BF5	1	PL 1 1/8 " x 12 "	58	9/16	2665.9	2665.9	CVN	
		P1	4	PL 1/2 " x 5 "	1	4	10.9	43.6		
		P2	4	PL 1/2 " x 5 "	1	4	10.9	43.6		
		P4	4	PL 1/2 " x 5 "	1	4	10.9	43.6		
			138	7/8" DIA. SHEAR STUD	0	9				
TOTAL WEIGHT =								6746.9		



GIRDERS G1 - G6 CAMBER DIAGRAM			
UNITS IN INCHES			
FINISH:	HOT-DIP GALVANIZED		
MATERIAL:	AASHTO M270 GR. 50		
HOLES:	Ø 1 1/8" U.N.O		
ELECTRODES:	PER WELD PROCEDURE	REVISED PER REVIEWER COMMENTS	1/6/17
WELDS:	PER WELD PROCEDURE	ISSUED FOR APPROVAL	12/6/16
SURFACE PREP:	SSPC-SP6	No.	Revision Date
Fabricator:	ARC ENTERPRISES INC.	Detailer:	DRAFTWORKS DETAILING 11 CHESTNUT ST. AMESBURY, MA
Job Number:	16-181	Shop Drawing:	GIRDER G5 DETAILS
Original Submittal Date:	12/6/16	Project:	VTRANS, STRAFFORD VT BRIDGE REPLACEMENT PROJ# BF 0177 (10)
Drawn By:	DAP	Checked By:	BLB
		QC:	MILLER CONSTRUCTION
			Sheet No: 7 OF 10 Drawing No: S-5