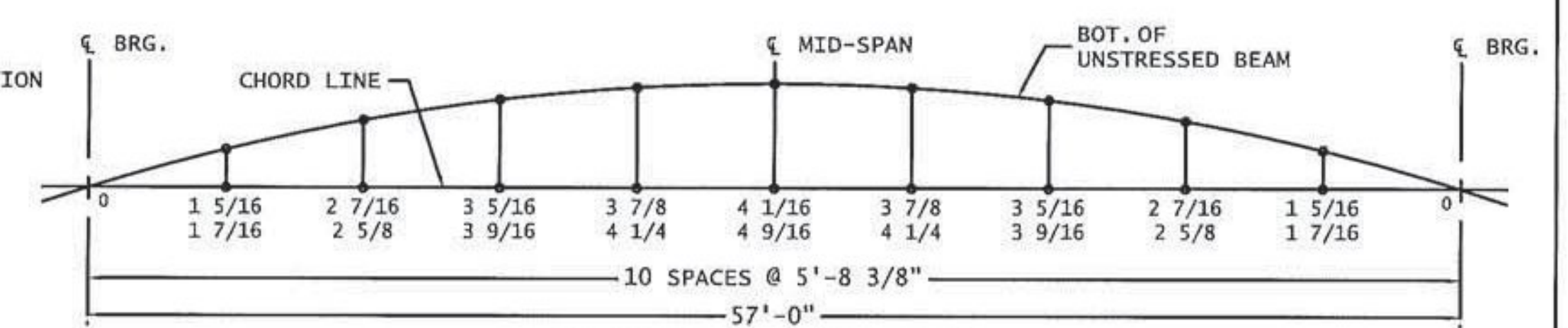


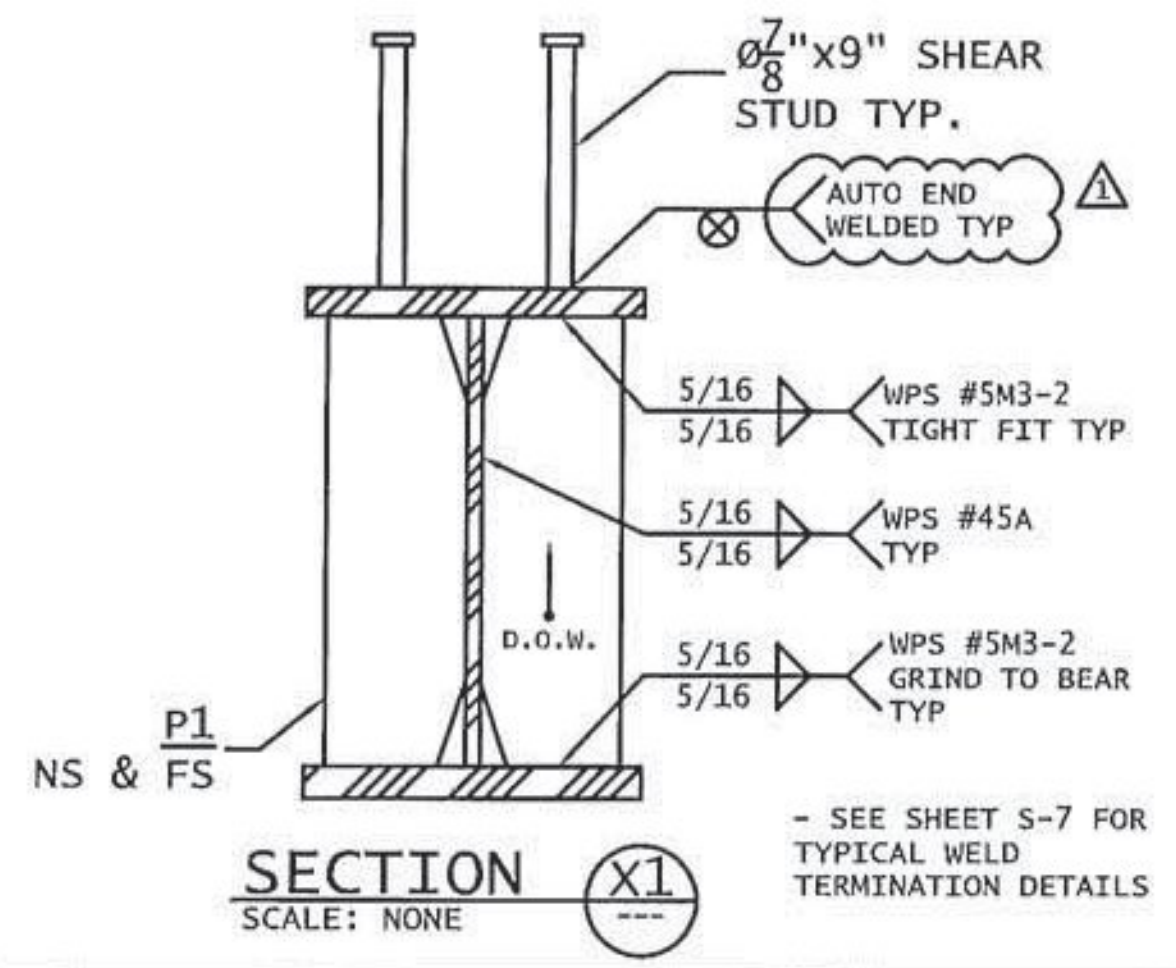
Vermont Agency of Transportation  
**RECEIVED**  
 CK'D BY RSF, TAM OK'D BY JDG  
 February 9, 2017  
 RESUBMIT No Approved  
 BY Kristin Higgins DATE 2/14/2017

THE TWO CAMBER DIMENSIONS REPRESENT THE FOLLOWING:  
 -TOP DIMENSION = TOTAL CAMBER IN FINISHED BEAM  
 -BOTTOM DIMENSION = TOTAL CAMBER @ TIME OF FABRICATION



GIRDERS G1 - G6 CAMBER DIAGRAM  
 UNITS IN INCHES

BILL OF MATERIALS										
SHIP MARK	SHIP QTY	PIECE MARK	PC. QTY	DESCRIPTION	LENGTH		WT. lbs. ea.	WT. lbs. tot.	MAT'L	
					Ft.	In.				
G1	1			GIRDER ASSEMBLY	58	13/16	6704.3	6704.3		
		WP1	1	PL 1/2" x 16"	58	13/16	1580.4	1580.4	CVN	
		TF1	1	PL 1" x 12"	58	9/16	2369.7	2369.7	CVN	
		BF1	1	PL 1 1/8" x 12"	58	9/16	2665.9	2665.9	CVN	
		P1	4	PL 1/2" x 5"	1	4	10.9	43.6		
		P2	4	PL 1/2" x 5"	1	4	10.9	43.6		
		DB1	1	PL 1/4" x 3 1/8"	0	8 5/8	1.1	1.1		
			138	7/8" DIA. SHEAR STUD	0	9				
TOTAL WEIGHT =								6704.3		



FINISH: HOT-DIP GALVANIZED		
MATERIAL: AASHTO M270 GR. 50		
HOLES: 15/16" U.N.O.		
ELECTRODES: PER WELD PROCEDURE	REVISOR	1/6/17
WELDS: PER WELD PROCEDURE	ISSUED FOR APPROVAL	12/6/16
SURFACE PREP: SSPC-SP6	No.	Revision
Author: ARC ENTERPRISES INC.	Checker: BLB	DATE: 12/6/16
Job Number: 16-181	SHOP DRAWING GIRDER G1 DETAILS	
Original Submittal Date: 12/6/16	VTRANS, STRAFFORD VT BRIDGE REPLACEMENT PROJ# BF 0177 (10)	
Drawn By: DAP	Checked By: BLB	DATE: MILLER CONSTRUCTION
		Sheet No: 3 OF 10 Drawing No: S-1