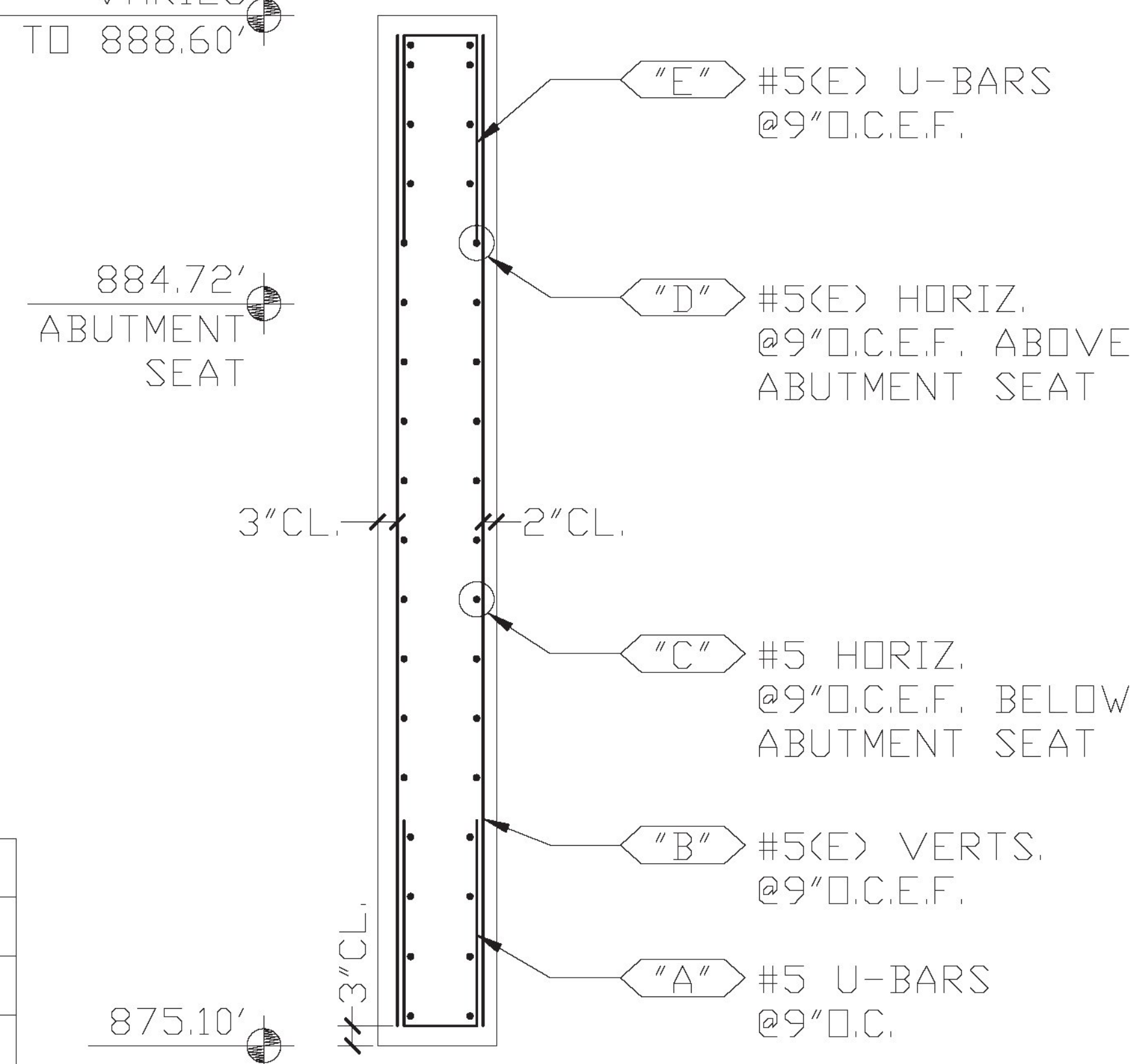


WINGWALL WW3 PLAN
CONTRACT DWG. REF. 34 OF 52

VARIES
888.10' TO 888.60'



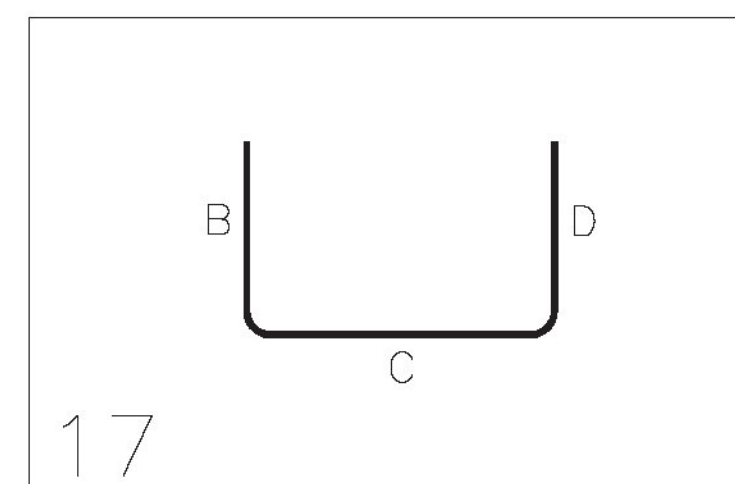
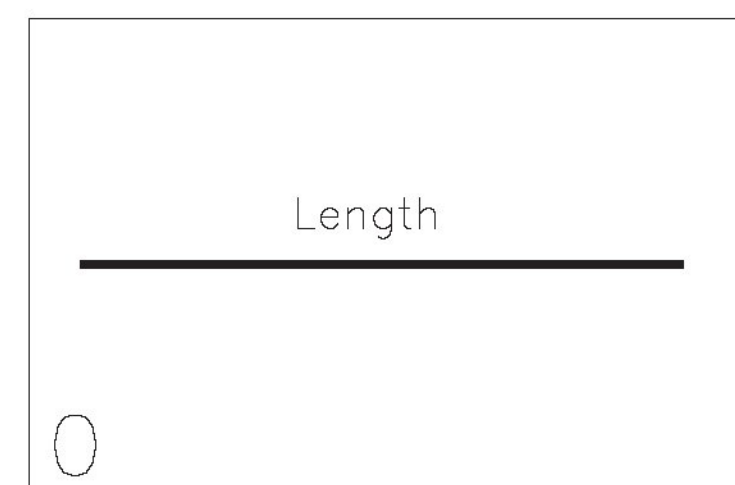
SECTION 1

CONTRACT DWG. REF. 34 OF 52

Release Number:

BAR LIST

Bar Mark	Qty	Size	Total Length	Type	'A'	'B'	'C'	'D'	'E'	'F'	'G'	'H'	'J'	'K'	'O'	'R'
5D01	13	#5	6'-3"	17		2'-7"	1'-1"	2'-7"								
5DE01a	10	#5	12'-6"	0		12'-6"										
Varies To																
5DE01c	6	#5	12'-11"	0		12'-11"										
5DE02	13	#5	6'-3"	17		2'-7"	1'-1"	2'-7"								



FOR APPROVAL

LEGEND:

CONT.-CONTINUOUS	E.E.-EACH END
TRANS.-TRANSVERSE	E.F.-EACH FACE
DWLS.-DOWELS	N.F.-NEAR FACE
VERTS.-VERTICAL	F.F.-FAR FACE
HORIZ.-HORIZONTAL	E.W.-EACH WAY
T&B -TOP & BOTTOM	O.C.-ON CENTER
I.F.-INNER FACE	L.W.-LONG WAY
O.F.-OUTER FACE	S.W.-SHORT WAY

EPOXY REINF. BARS ASTM A615
GRADE 60, MARKED (E).
EPOXY COATING TO MEET AASHTO
M284/ASTM A775.

REINF. BARS ASTM A615 GRADE 60

ELEVATIONS & DIMENSIONS SHOWN
ON THIS DWG. ARE FOR REINF.
DETAILING PURPOSES ONLY AND ARE
NOT INTENDED FOR DIMENSIONAL
CONSTRUCTION.

VERIFICATION OF UNCLEAR INFORMATION
MAY BE REQUESTED ON THIS DRAWING.
SHOULD VERIFICATION BE LEFT
UN-ADDRESSED IT WILL REMAIN AS
SHOWN AND ASSUME TO BE CORRECT.

Vermont Agency of Transportation

RECEIVED

CK'D BY NVDB, JW, KM, TM OK'D BY JG

March 21, 2017

RESUBMIT No Approved
BY K. Higgins DATE 03/23/2017

6			
5			
4			
3	3/9/17		REVISED PER APPROVAL / FOR APPROVAL
2	1/4/17	-	FOR APPROVAL
1	12/16/16	-	FOR APPROVAL
	DATE	REV.#	SENT FOR
			DIMENSION DIMENSION FABRICATORS INC.
			2000 7TH STREET SCOTIA, N.Y. 12302 PH: (518) 374-1936 FAX (518) 374-4830 www.dimensionfabricators.com
STRUCTURE	VTAOT STRAFFORD BF0177(10)		
LOCATION	TOWN OF STRAFFORD, ORANGE COUNTY, VT		
ARCHITECT			
ENGINEER			
CUSTOMER	MILLER CONSTRUCTION		
DRAWN BY	DATE	DFI #	
CMB	12/13/16	10098	
DRAWING COVERS			DRAWING #
ABUTMENT 2 - WINGWALL WW3			D