

**BEGIN R.O.W. PROJECT
STRAFFORD BF 0177(10)
STA. 10+91.52, 24.75' LT**

MAINLINE PT #1
STA 10+74.94
N = 486296.1699
E = 1677398.8689

MAINLINE POB/PC #1
STA 10+00.00
N = 486233.7153
E = 1677359.6785

BEGIN APPROACH
STA 10+25.00
MATCH EXISTING

MAINLINE CURVE #1:
DELTA = 35°47'00"
D = 47°44'47"
R = 120.00'
T = 38.74'
L = 74.94'
E = 6.10'

MAINLINE CURVE #2:
DELTA = 13°22'00"
D = 11°27'33"
R = 500.00'
T = 58.59'
L = 116.65'
E = 3.42'

CONSTRUCT DRIVE W/5'-0" PAVED
APRON AND 3" AGGREGATE SURFACE
COURSE BEYOND APRON
STA 11+24.65 - 11+62.99 LT
STA 11+51.96 - 11+87.03 RT

CONSTRUCT 5'-0" PAVED APRON
STA 14+36.73 - 14+69.72 RT

4" YELLOW LINE (DOUBLE)
STA 10+25 - 14+75 CL

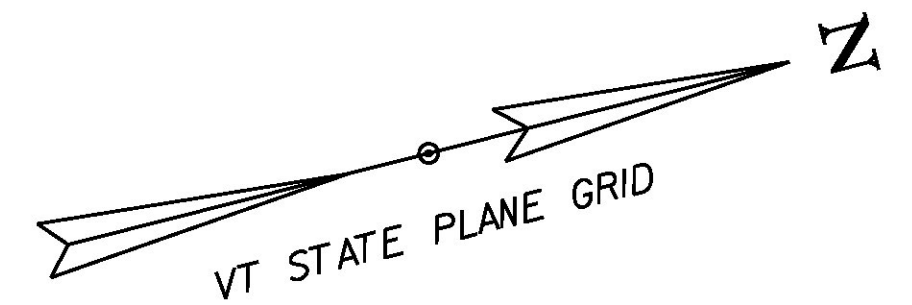
4" WHITE LINE
STA 10+25 - 14+75 LT
STA 10+25 - 14+75 RT

STONE FILL, TYPE I DITCH
STA 13+25 - 14+20 LT

REMOVAL OF CONCRETE OR MASONRY
STA 12+50 - 13+03 RT
STA 12+51 - 12+91 LT

REMOVAL AND DISPOSAL OF GUARDRAIL
STA 11+65 - 11+88 LT
STA 11+89 - 11+91 RT
STA 12+43 - 12+93 LT
STA 12+44 - 12+97 RT

SAWED PAVEMENT JOINT
ALONG APPROACH SLAB EDGE
STA 11+67.53 - 11+87.03 RT



CONCRETE CURB, TYPE B
STA 12+48 - 12+74 RT

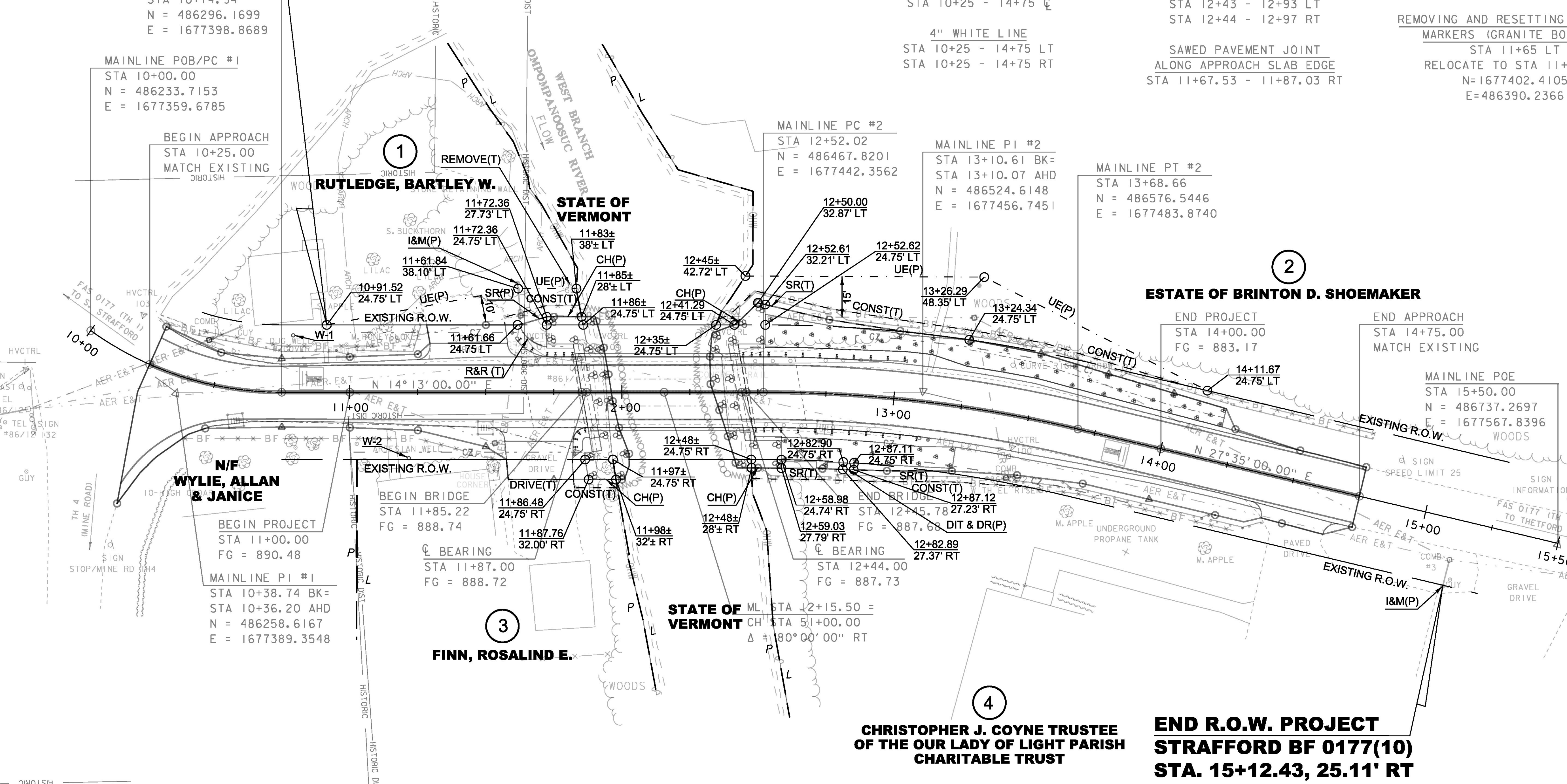
REMOVING AND RESETTING PROPERTY
MARKERS (GRANITE BOLLARD)
STA 11+65 LT

RELOCATE TO STA 11+67 LT
N=1677402.4105
E=486390.2366

MAINLINE PC #2
STA 12+52.02
N = 486467.8201
E = 1677442.3562

MAINLINE PI #2
STA 13+10.61 BK=
STA 13+10.07 AHD
N = 486524.6148
E = 1677456.7451

MAINLINE PT #2
STA 13+68.66
N = 486576.5446
E = 1677483.8740



1
RUTLEDGE, BARTLEY W.

STATE OF
VERMONT

2
ESTATE OF BRINTON D. SHOEMAKER

N/F
WYLIE, ALLAN
& JANICE

STATE OF
VERMONT

4
CHRISTOPHER J. COYNE TRUSTEE
OF THE OUR LADY OF LIGHT PARISH
CHARITABLE TRUST

**END R.O.W. PROJECT
STRAFFORD BF 0177(10)
STA. 15+12.43, 25.11' RT**

LINES SHOWN ON THIS PLAN AS EXISTING
PROPERTY LINES P/L ARE BELIEVED TO
BE ACCURATE BUT SHOULD NOT BE RELIED
UPON FOR PURPOSES UNRELATED TO THE
TOWN OF STRAFFORD'S ACQUISITION OF
LAND AND RIGHTS FOR THIS PROJECT.

**FOR R.O.W.
USE ONLY**

LAYOUT SHEET

SCALE 1" = 20' - 0"
20 0 20

NOTE:
ADJUST NEW CENTERLINE AND
EDGE LINES TO MATCH EXISTING
LINES AT BEGIN/END APPROACH

PROJECT NAME: STRAFFORD
PROJECT NUMBER: BF 0177(10)

FILE NAME: r13j088lay.dgn
PROJECT LEADER: K. HIGGINS, P.E.
DESIGNED BY: R. KLINEFELTER
R.O.W. LAYOUT SHEET 1 OF 1

PLOT DATE: 31-AUG-2016
DRAWN BY: A. EGIZI
CHECKED BY: R. CLOUTIER
SHEET 51 OF 52