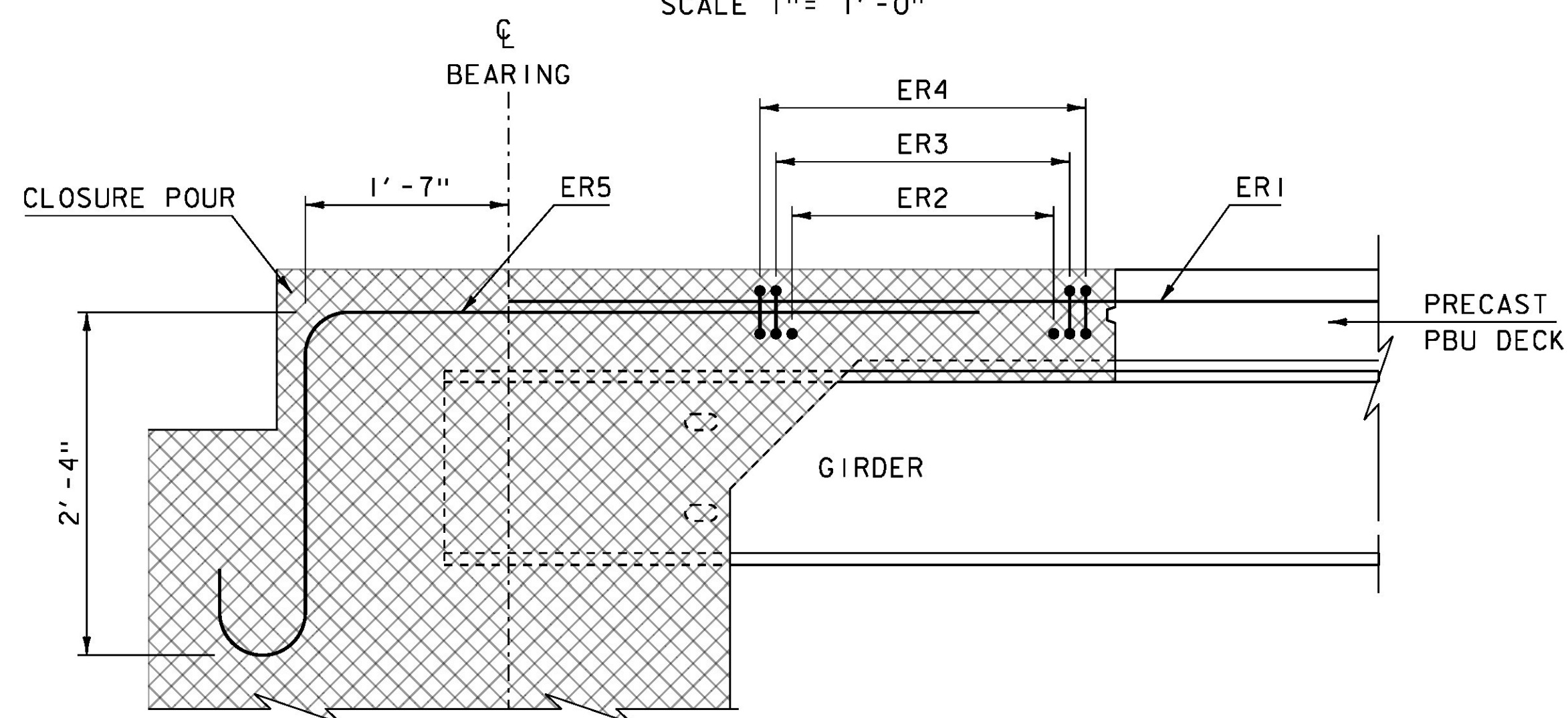
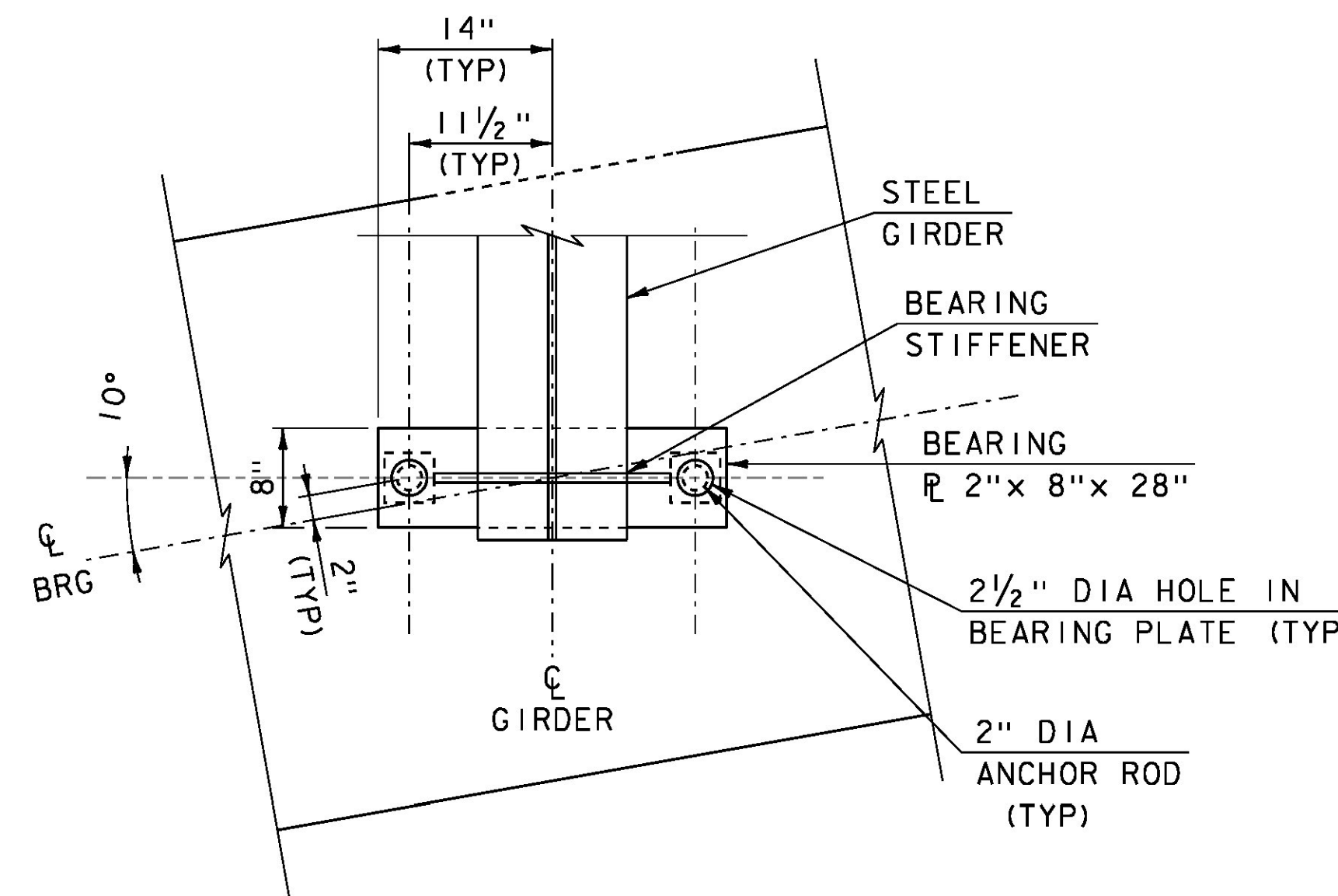


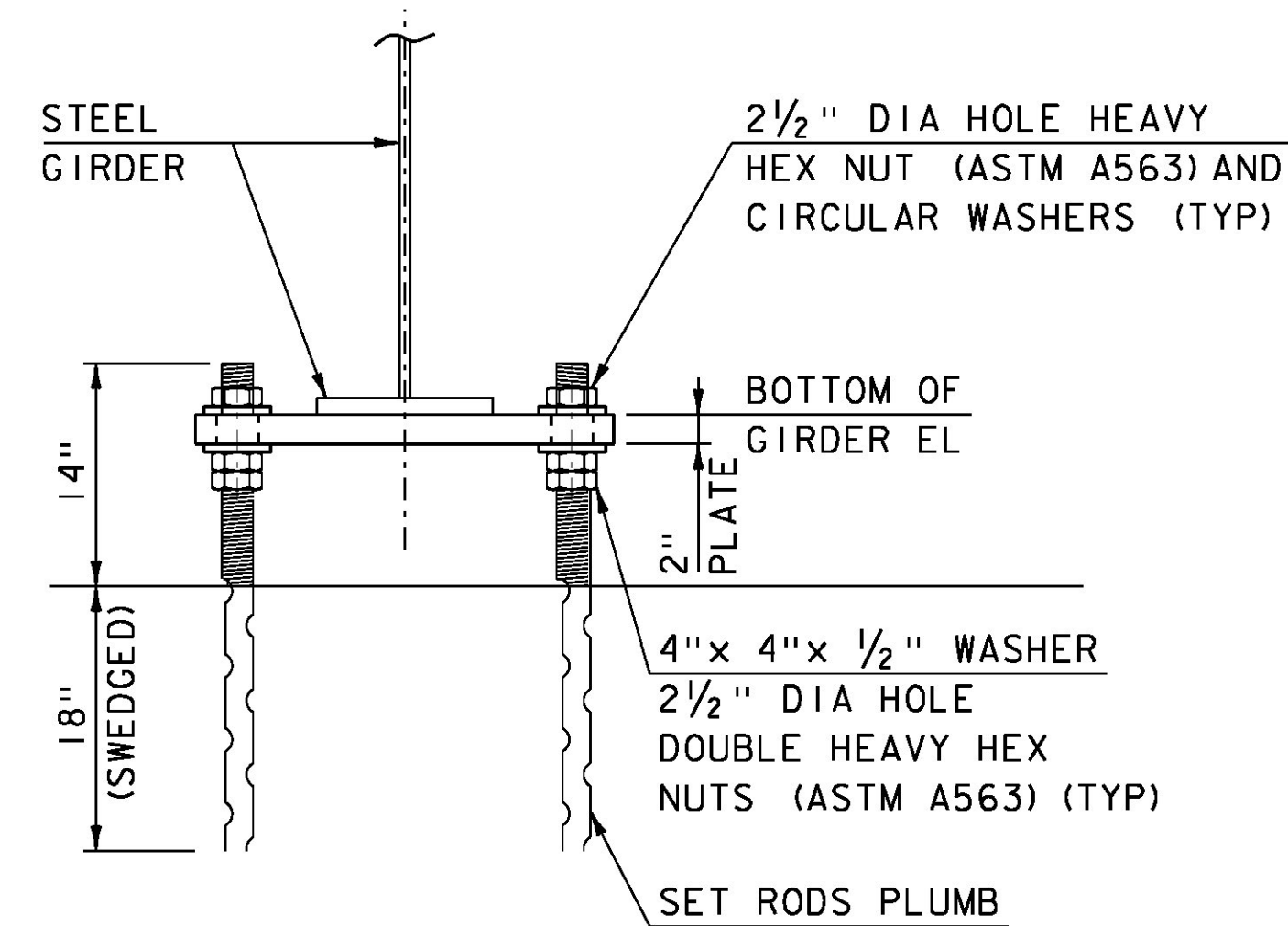
ADDITIONAL END REINFORCING  
PLAN VIEW  
SCALE 1" = 1'-0"



ADDITIONAL END REINFORCING  
ELEVATION VIEW  
SCALE 1" = 1'-0"



TEMPORARY BEARING ASSEMBLY PLAN  
SCALE 1" = 1'-0"



TEMPORARY BEARING ASSEMBLY ELEVATION  
SCALE 1" = 1'-0"

TEMPORARY BEARING NOTES

1. PAYMENT FOR TEMPORARY BEARING ASSEMBLIES WILL BE CONSIDERED INCIDENTAL TO THE APPROPRIATE PRECAST CONCRETE ABUTMENT ITEMS.
2. BEARING PLATES SHALL BE LEVEL PRIOR TO SETTING PREFABRICATED BRIDGE UNITS. ELEVATIONS SHALL BE ADJUSTED TO WITHIN 0.01FT OF ELEVATIONS NOTED DURING OFF-SITE FABRICATION OF THE UNITS.
3. BEARING PLATE STEEL SHALL CONFORM TO SUBSECTION 714.03. ANCHOR RODS SHALL MEET THE REQUIREMENTS OF SUBSECTION 714.08, AND SHALL BE GRADE 55.

BOTTOM OF GIRDER ELEVATIONS		
GIRDER	ABUTMENT #1	ABUTMENT #2
G1	886.28	885.39
G2	886.28	885.39
G3	886.00	884.95
G4	886.00	884.95
G5	885.72	884.50
G6	885.72	884.50

SPECIAL PROVISION (HIGH PERFORMANCE CONCRETE, RAPID SET)

NOTE:

NF = NEAR FACE  
FF = FAR FACE  
EF = EACH FACE  
3" CLEAR, UNLESS OTHERWISE SPECIFIED ON THE PLANS.  
2'-7" BAR LAP UNLESS OTHERWISE SPECIFIED ON THE PLANS.

ADDITIONAL END REINFORCING CHART

BAR	SIZE	SPACING	TYPE
ER1	5	9"	STR
ER2	4	6"	STR
ER3	4	6"	I
ER4	4	6"	I
ER5	8	6"	18

\* BAR LABELED SR2 IS OMITTED FOR CLARITY ALONG WITH BARS DETAILED IN PBU ABUTMENT REINFORCING SHEET AND PBU CLOSURE POUR REINFORCING SHEET.

PROJECT NAME: STRAFFORD  
PROJECT NUMBER: 0177(10)

FILE NAME: s13j088sup.dgn  
PROJECT LEADER: K. HIGGINS  
DESIGNED BY: T. MATTHEWS  
PBU AND BEARING DETAILS SHEET

PLOT DATE: 31-AUG-2016  
DRAWN BY: T. MATTHEWS  
CHECKED BY: J. GRIGAS  
SHEET 27 OF 52