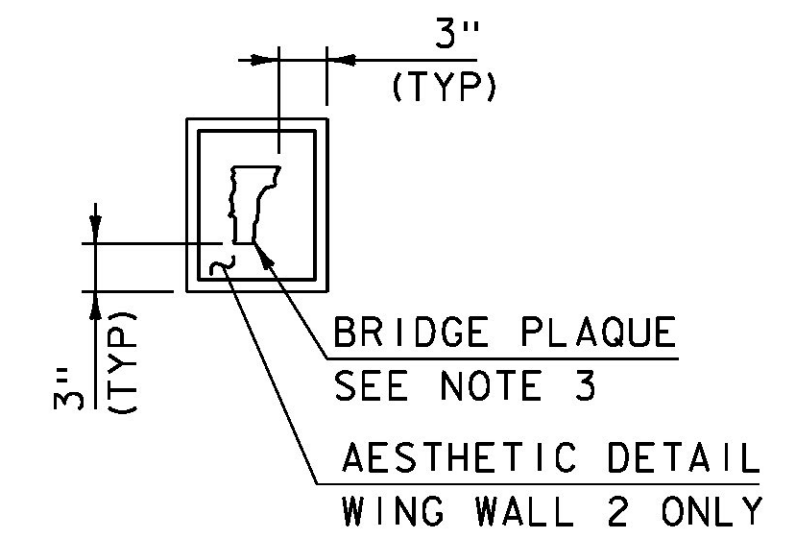


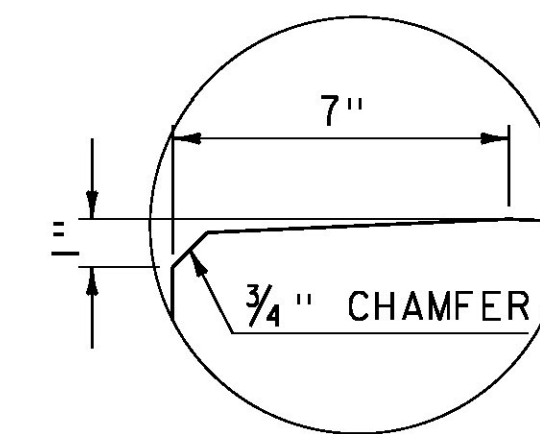
ROADWAY ELEVATION OF RAIL

SCALE: VERTICAL: 1" = 1'-0"
HORIZONTAL: 1/2" = 1'-0"



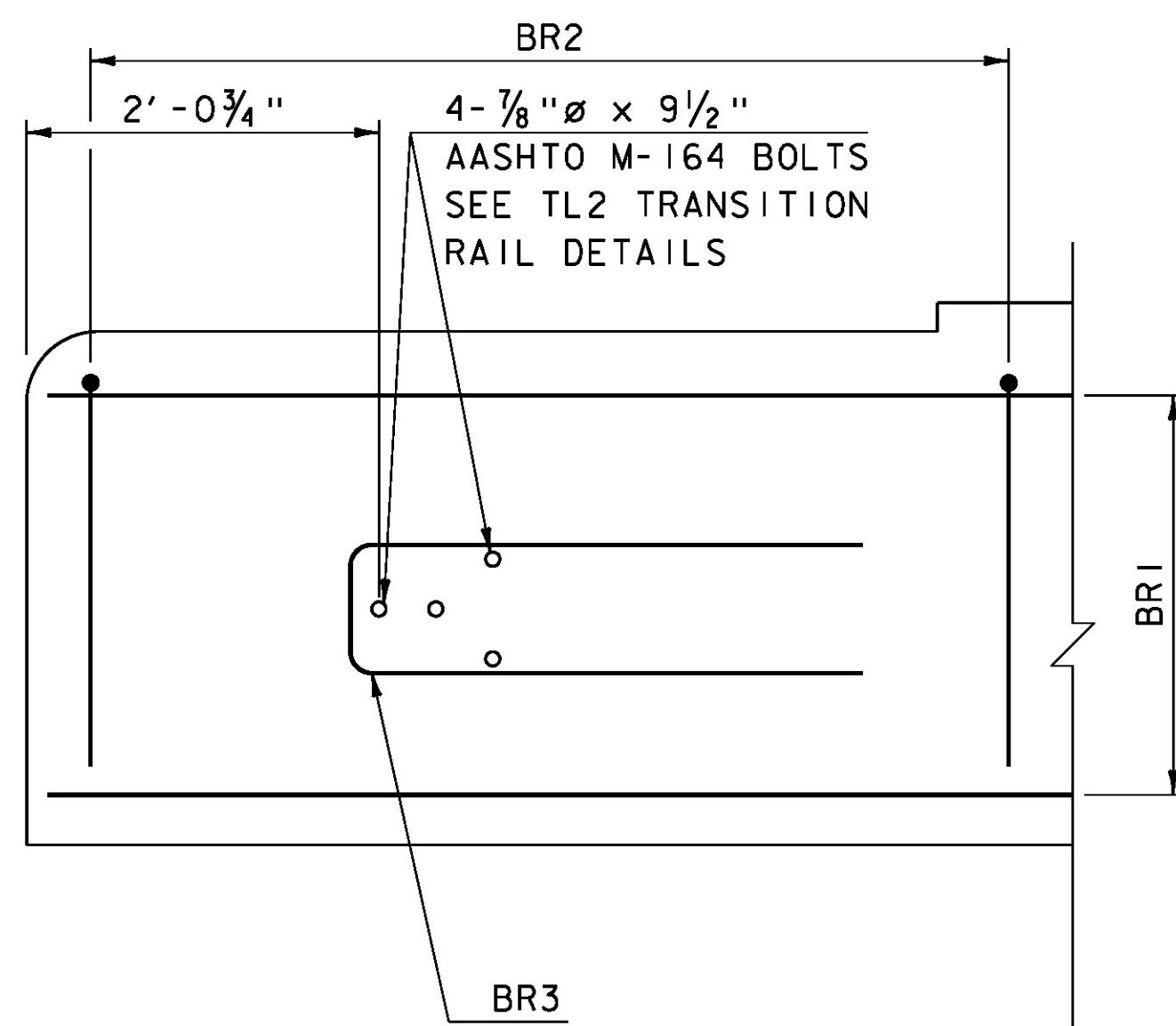
BRIDGE PLAQUE

SCALE 1" = 1'-0"



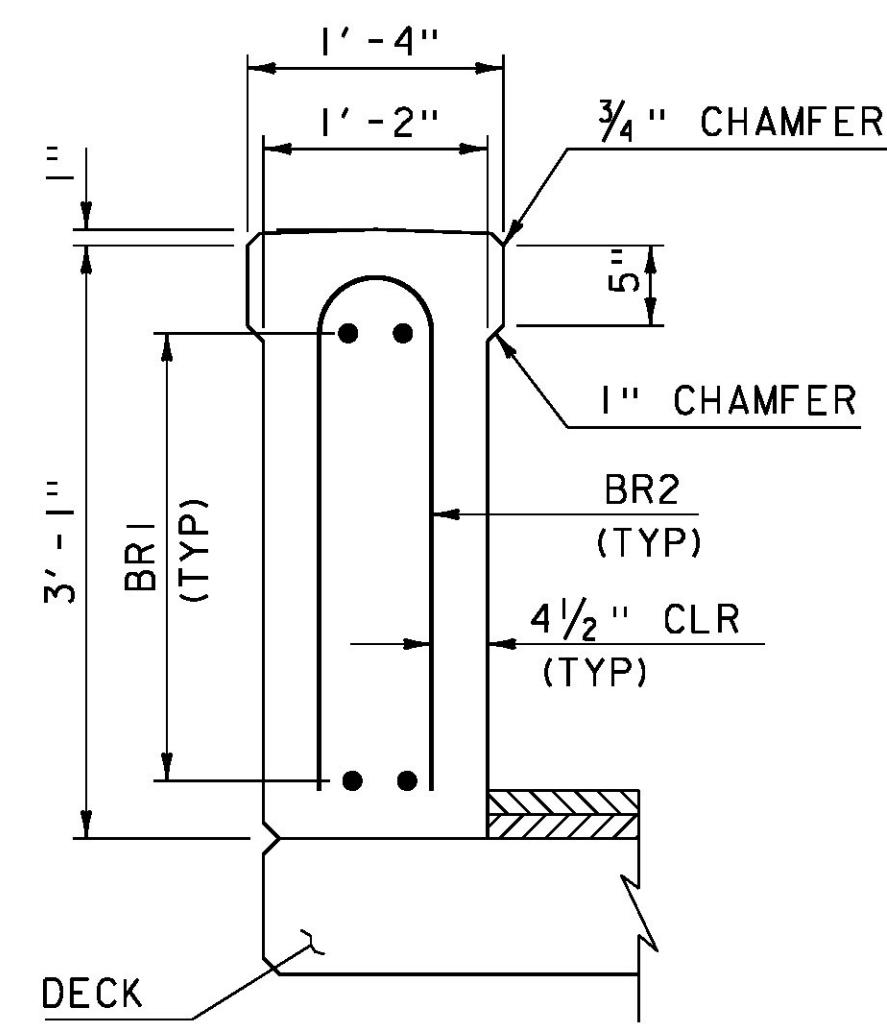
DETAIL "A"

SCALE 3" = 1'-0"



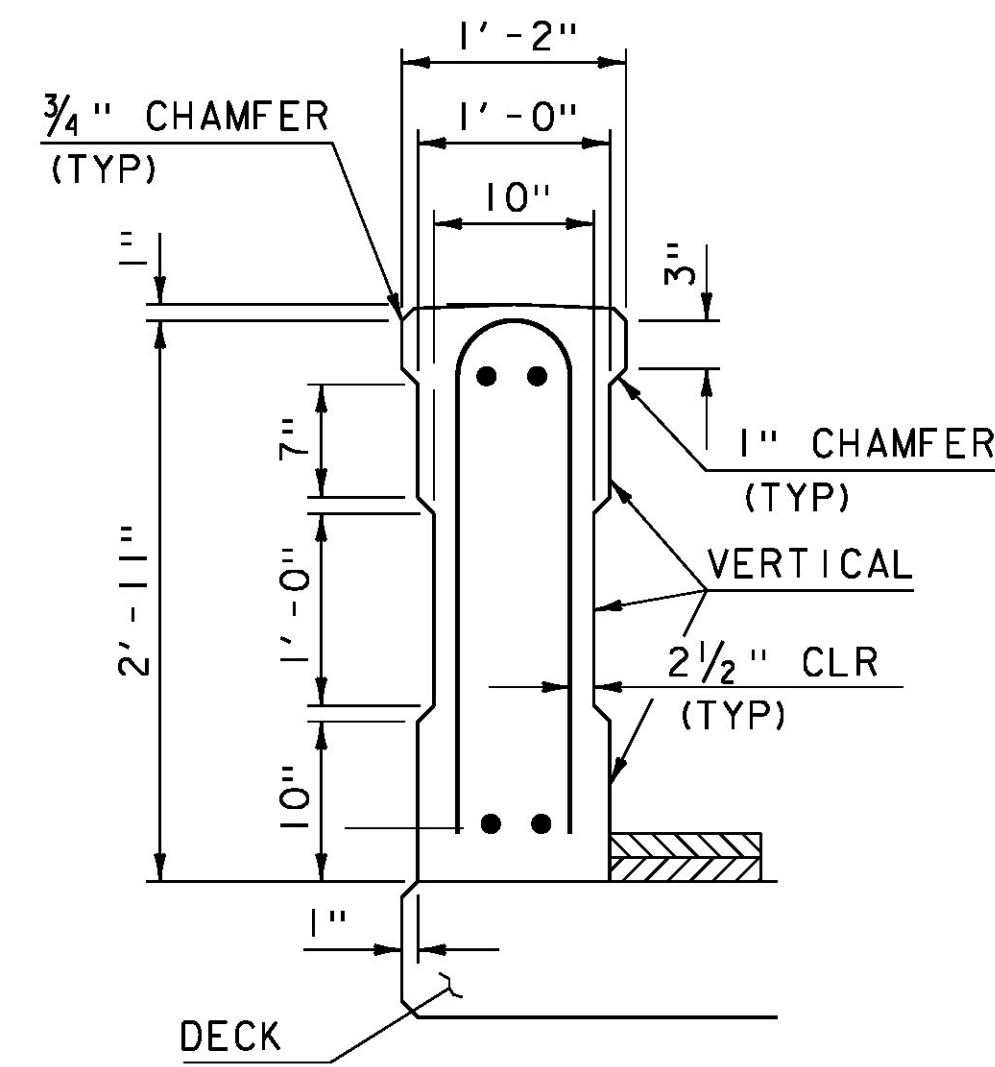
TYPICAL REINFORCING PLACEMENT

SCALE 1" = 1'-0"



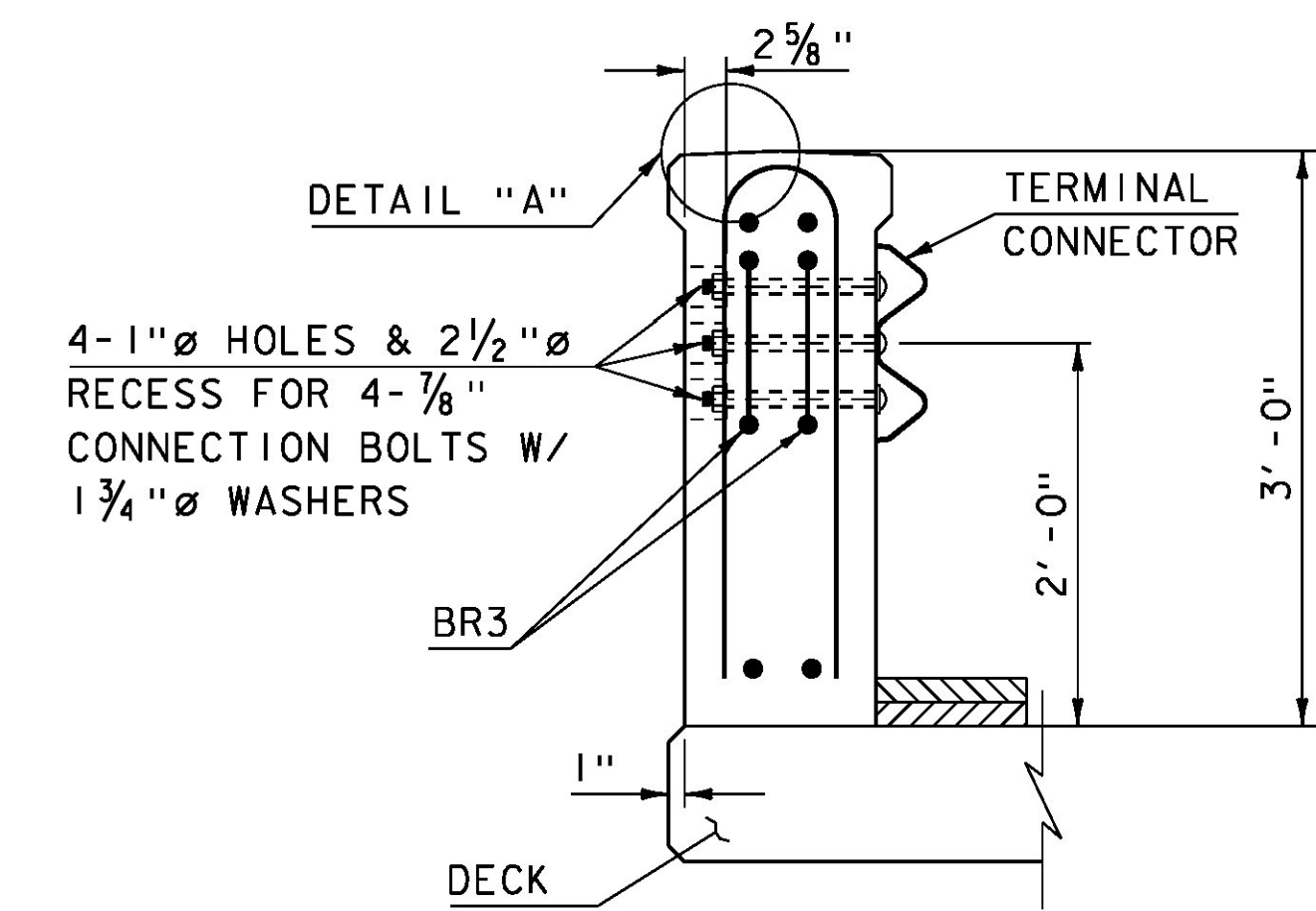
SECTION A-A

SCALE 1" = 1'-0"



SECTION B-B

SCALE 1" = 1'-0"



SECTION C-C

SCALE 1" = 1'-0"

HOLES AND RECESSES ARE TO BE FORMED OR CORED, PERCUSSION DRILLING IS NOT PERMITTED.

BRIDGE RAIL REINFORCING CHART

BAR	SIZE	SPACING	TYPE
BR1	4	10"	STR
BR2	4	8"	2
BR3	4	AS SHOWN	2

NOTES:

- 2'-1" NUMBER 4 BAR LAP LENGTH.
- SUPERSTRUCTURE BRIDGE RAIL CONNECTION REINFORCING STEEL OMITTED FOR CLARITY.
- BRIDGE PLAQUE IS TO BE PLACED ON THE PARAPET OFF OF WINGWALL 2. A BRIDGE PLAQUE AS SHOWN IN SD 502.00 WILL NOT BE REQUIRED. THE BRIDGE PLAQUE WILL BE SUPPLIED BY THE AGENCY OF TRANSPORTATION AND WILL BE CONSIDERED INCIDENTAL TO SPECIAL PROVISION BRIDGE RAIL.
- BRIDGE PLAQUE TO HAVE A 3" BORDER FOR THE AESTHETIC DETAIL.

PROJECT NAME: STRAFFORD
PROJECT NUMBER: BF 0177(10)

FILE NAME: s13j088raildet.dgn
PROJECT LEADER: K. HIGGINS
DESIGNED BY: S. COLEY
BRIDGE RAIL DETAIL SHEET

PLOT DATE: 31-AUG-2016
DRAWN BY: S. COLEY
CHECKED BY: J. GRIGAS
SHEET 22 OF 52