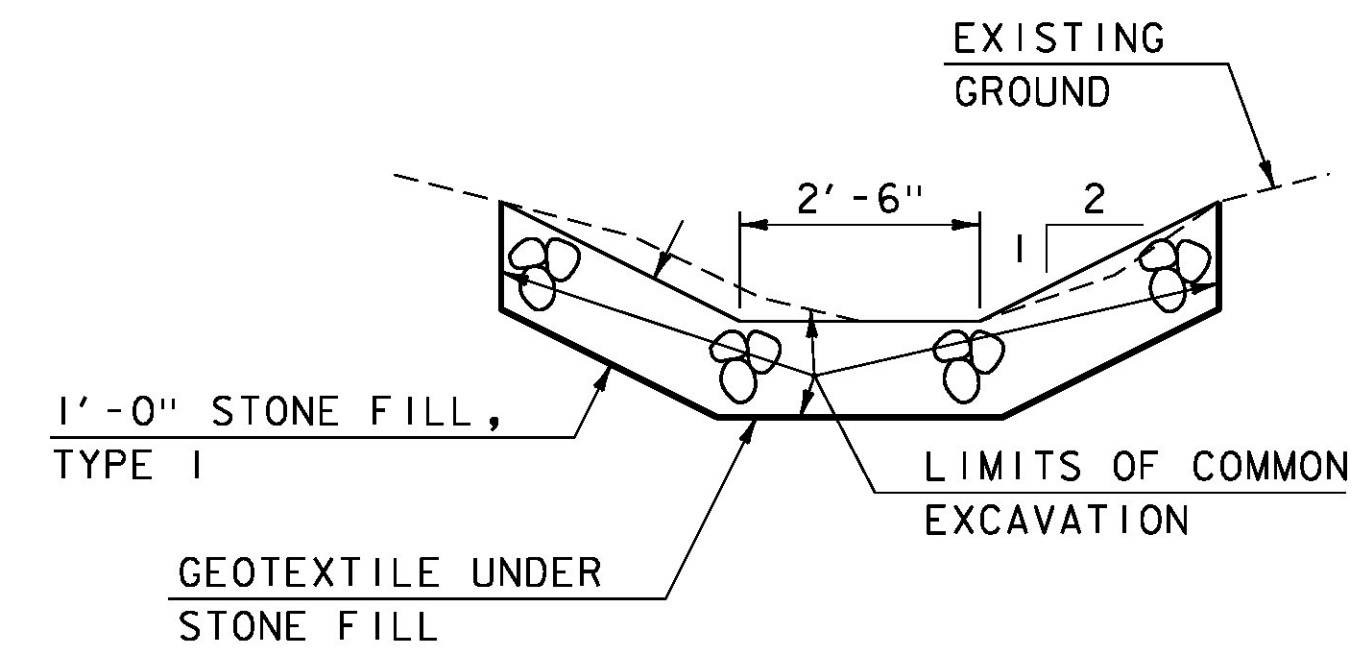
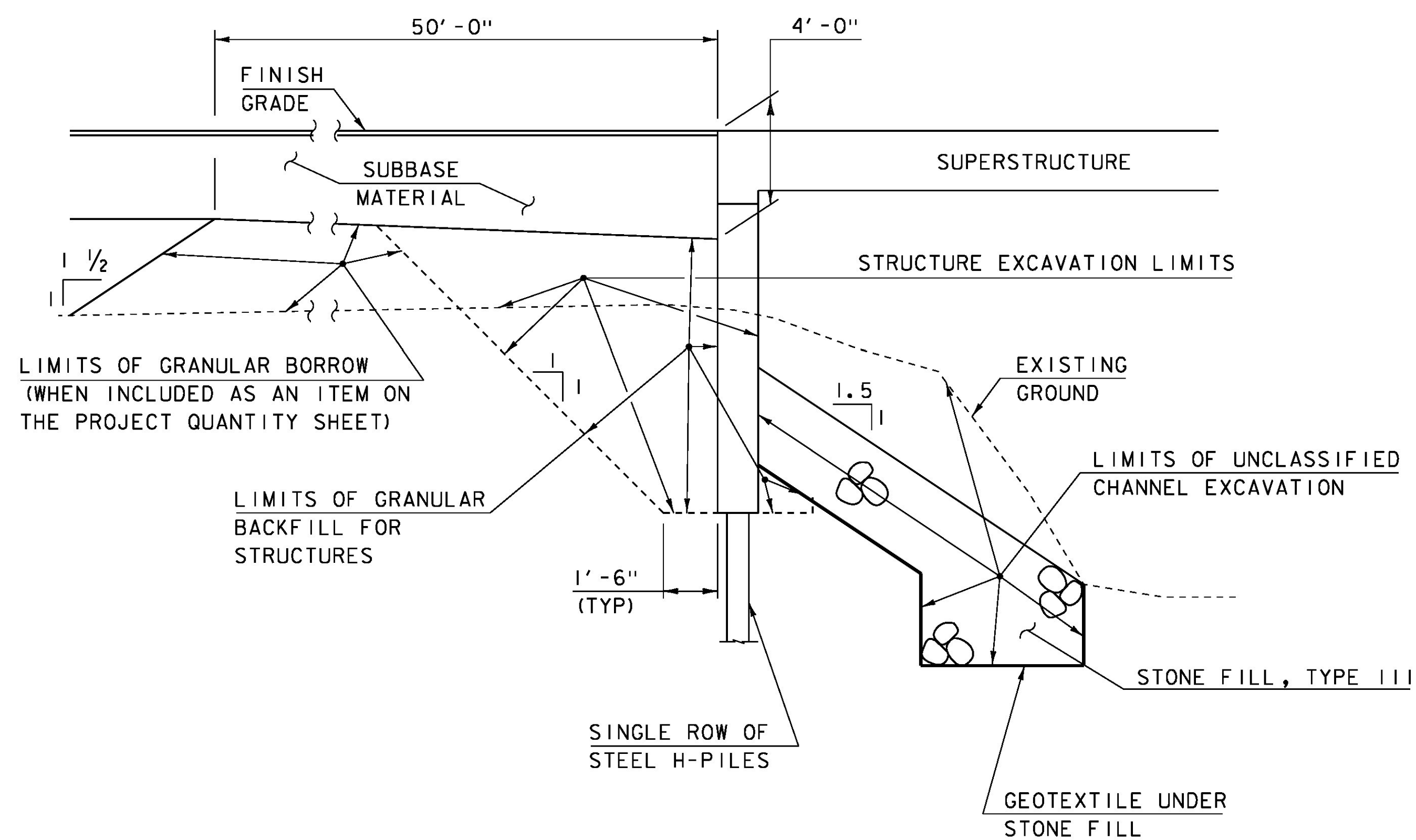


TYPICAL CHANNEL SECTION
(NOT TO SCALE)

*GRUBBING MATERIAL SHALL NOT BE PLACED ON THE STONE FILL IN THE AREA UNDER THE BRIDGE. WHENEVER CHANNEL SLOPE INTERSECTS ROADWAY SUBBASE, GRUBBING MATERIAL SHALL BEGIN AT THE BOTTOM OF SUBBASE.

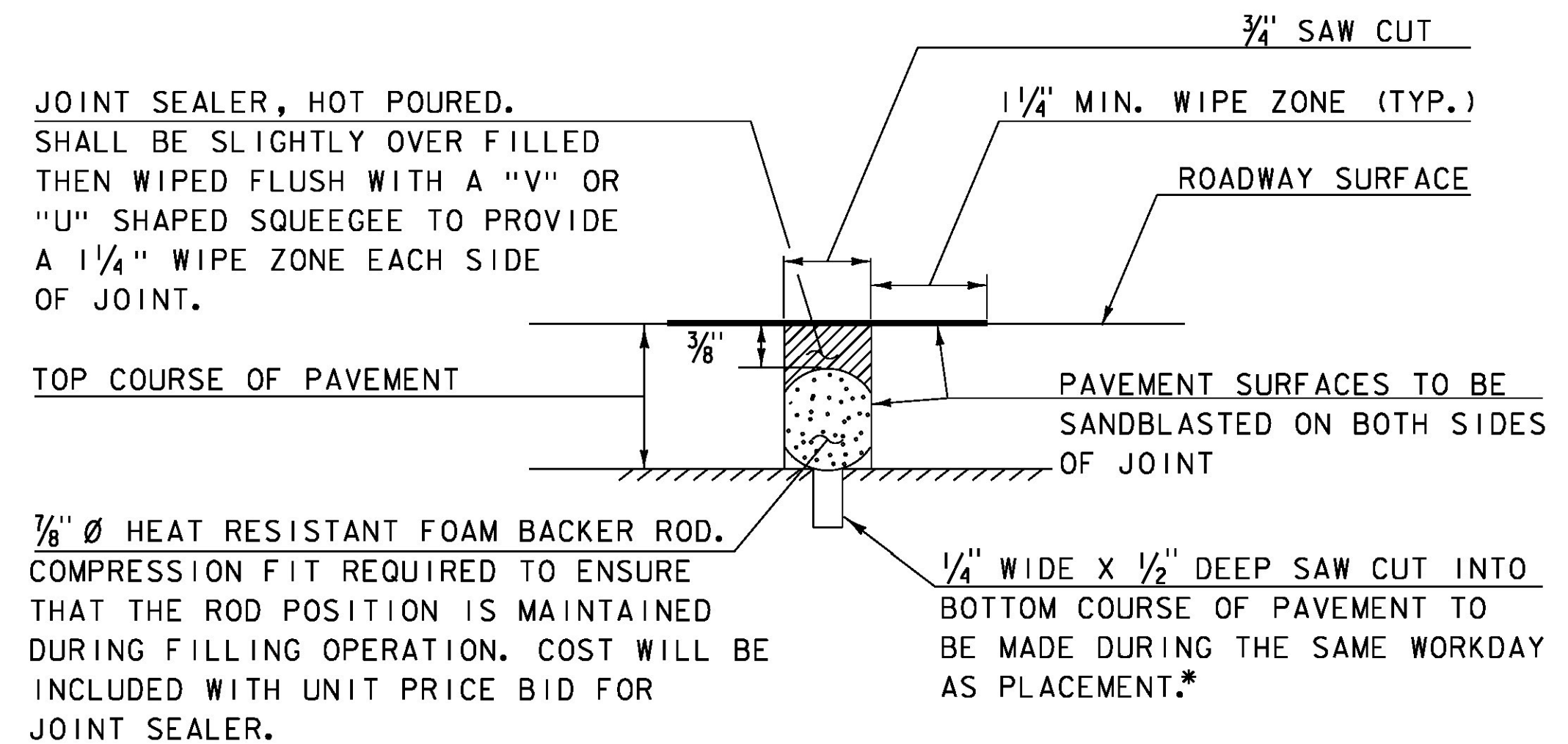


TYPICAL DITCH SECTION
(NOT TO SCALE)



TYPICAL INTEGRAL ABUTMENT SECTION
NOT TO SCALE

ACTUAL LIMITS OF STRUCTURE EXCAVATION SHALL BE DETERMINED BY THE CONTRACTOR. HOWEVER, ONLY EXCAVATION BETWEEN THE LIMITS SHOWN WILL BE PAID FOR UNDER ITEM 204.25 "STRUCTURE EXCAVATION". EXCAVATION BY THE CONTRACTOR OUTSIDE OF THESE LIMITS WILL BE AT THE EXPENSE OF THE CONTRACTOR.



SAWED PAVEMENT JOINT DETAIL
(NOT TO SCALE)

1. JOINT SHALL BE LOCATED ACCURATELY BY STRING LINING, OR OTHER MEANS, PRIOR TO PAVING, SO THAT THE SAW CUTS WILL BE MADE DIRECTLY OVER THE END OF CONCRETE DECK. JOINT SHALL BE CUT DRY IN A SINGLE PASS AND BE SEALED WITHIN 24 HOURS OR PRIOR TO EXPOSURE TO TRAFFIC. JOINT SHALL BE CLEANED PRIOR TO APPLYING THE JOINT SEALER.
2. SAWED PAVEMENT JOINTS SHALL BE LOCATED BETWEEN THE APPROACH SLABS AND EACH END OF THE BRIDGE AND BETWEEN THE APPROACH SLABS AND ANY PAVED APRONS FOR DRIVES.

* SAWED PAVEMENT JOINT AT APRON SHALL BE CUT TO FULL PAVEMENT DEPTH.

PROJECT NAME:	STRAFFORD
PROJECT NUMBER:	BF 0177(10)
FILE NAME:	sl3j088typ.dgn
PROJECT LEADER:	K. HIGGINS
DESIGNED BY:	J. GRIGAS
TYPICAL SECTIONS 2	
PLOT DATE:	31-AUG-2016
DRAWN BY:	J. GRIGAS
CHECKED BY:	G. LAROCHE
SHEET	9 OF 52