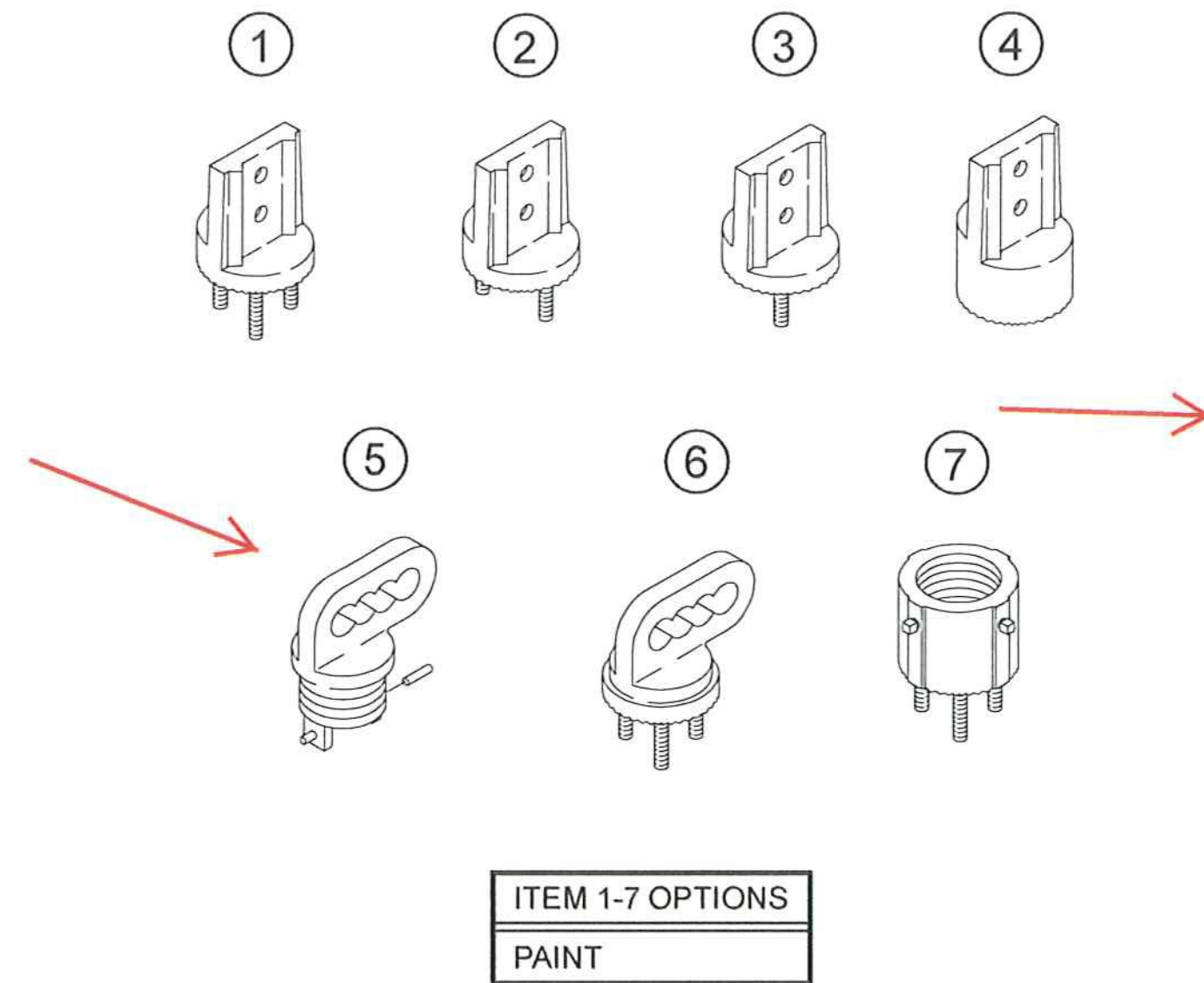




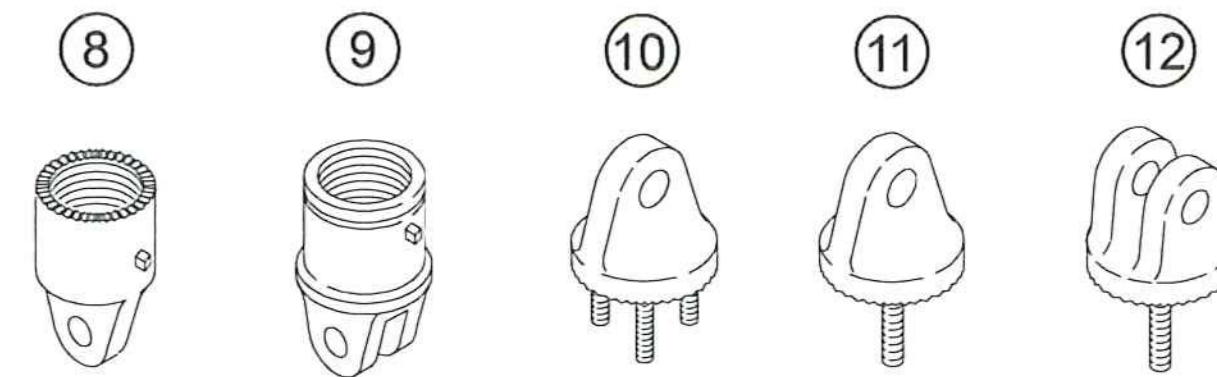
COMPONENTS

Span Wire



ITEM 1-7 OPTIONS
PAINT

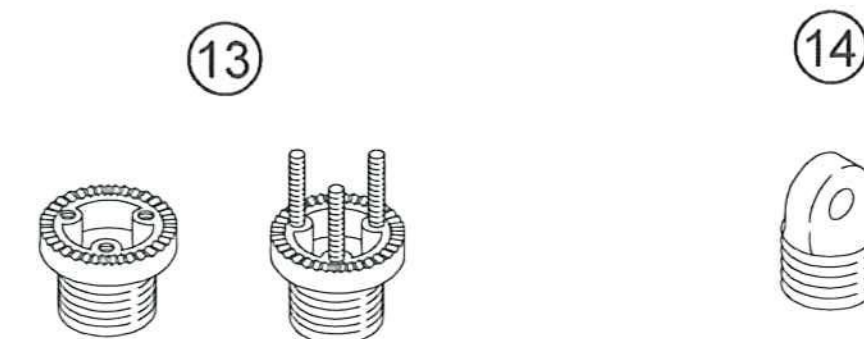
ITEM	DESCRIPTION	PART NO.
HANGER BODY:		
①	Tri-Stud, Alum	SE-0512
②	Double Stud, Alum	SE-0516
③	Tri-Stud, Alum	SE-0438
④	1 1/2" NPS, Alum	SE-0530
DISCONNECT BALANCER:		
⑤	1 1/2" NPS, 1/2" Wide Comb, Iron	SE-0380
⑥	Tri-Stud, 3/4" Wide Comb, Alum	SE-0505
⑦	TRI-STUD ADAPTER, 1 1/2" NPS, Alum	SE-0533
CLEVIS ADAPTER:		
⑧	1 1/2" NPS, 3/4" Clevis, Alum	SE-4030
⑨	1 1/2" NPS, Double, 3/4" Wide Slot, Alum	AB-0316
⑩	Tri-Stud, 3/4" Wide Clevis, Alum	SE-4031
⑪	Single Stud, 3/4" Wide Clevis, Alum	SE-0540
⑫	Single Stud, 3/4" Wide Slot, Alum	SE-0630
⑬	TRI-BOLT/TRI-STUD ADAPTER, 1 1/2" NPS, Alum	SE-0502
SPAN WIRE ADAPTER:		
⑭	1 1/2" NPS, Brass	SE-0345
	1 1/2" NPS, Alum w/ Stainless Bushing	SE-0371



ITEM 8-11 OPTIONS
STAINLESS BUSHING
PAINT

Notes:

1. All assemblies are supplied standard with stainless steel fasteners.
2. Specify options when ordering.



OPTIONS
TRI-BOLT or TRI-STUD