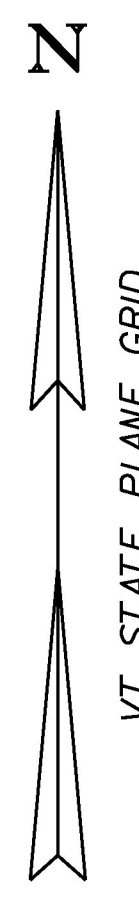
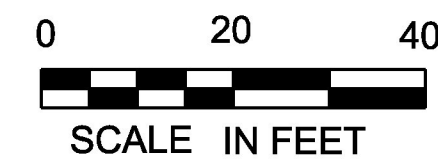


NOTE: TRAFFIC ITEMS LISTED ARE APPROXIMATE LOCATIONS AND MAY BE MODIFIED BY THE RESIDENT ENGINEER IN THE FIELD OR AS REQUIRED BY THE MANUFACTURER



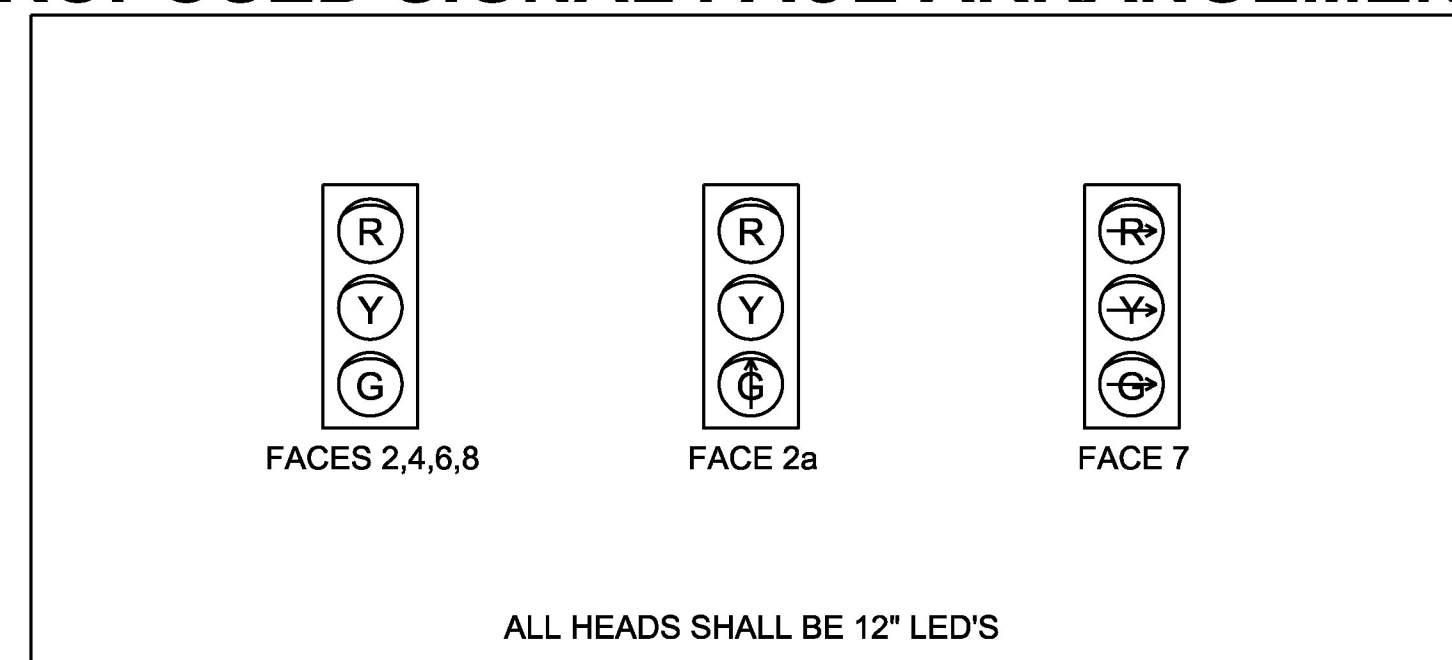
NOTES:

- EXISTING CONDUIT SHALL BE UTILIZED FOR NECESSARY WIRING.
- ANY OTHER MISCELLANEOUS EQUIPMENT AND LABOR NECESSARY TO PROVIDE A FULLY FUNCTIONAL TRAFFIC SIGNAL SYSTEM WILL BE CONSIDERED INCIDENTAL TO THE SIGNAL CONTRACT PAY ITEM(S) FOR THIS INTERSECTION.
- ALL NEW TRAFFIC SIGNAL EQUIPMENT IS TO BE INSTALLED AT THE LOCATION PROPOSED ON THE PLANS AND WILL BE PAID FOR UNDER THE APPROPRIATE SIGNAL CONTRACT PAY ITEM(S) FOR THIS INTERSECTION.
- THE EXISTING TRAFFIC SIGNAL EQUIPMENT REMOVED FROM THIS LOCATION IS TO BE SALVAGED AND RETURNED BY THE CONTRACTOR TO THE VILLAGE OF ESSEX JUNCTION WITHIN 48 HOURS OF REMOVAL. CONTACT RICK JONES AT 878-6944 WITH ANY QUESTIONS.
- CONSTRUCTION ACTIVITIES WILL BE SHORT DURATION AND WILL LIKELY RESULT IN MINIMAL IMPACT TO THE TRAVELING PUBLIC. ALL WORK SHALL BE PERFORMED DURING DAYTIME, OFF-PEAK HOURS. REFER TO THE VERMONT AGENCY OF TRANSPORTATION STANDARD DRAWINGS T-10 AND T-21 FOR ADDITIONAL INFORMATION. TRAFFIC CONTROL WARNING SIGNS SHALL BE PROVIDED AS NECESSARY ON EACH APPROACH PER THE 2009 MANUAL ON UNIFORM TRAFFIC CONTROL DEVICES (MUTCD). PAYMENT FOR THESE SIGNS, REFLECTORIZED DRUMS, ETC. SHALL BE CONSIDERED INCIDENTAL TO CONTRACT ITEM 641.10 TRAFFIC CONTROL (NH 2956(2)).
- ALL WORK TO BE COMPLETED WITHIN THE EXISTING RIGHT-OF-WAY. NOTIFY THE VILLAGE OF ESSEX JUNCTION PRIOR TO ANY WORK.
- ALL WIRE FROM CONTROLLER CABINET TO SIGNAL HEADS TO BE NEW #12 GAUGE.
- THE BOTTOM OF ALL SIGNAL HEADS SHALL BE AT THE SAME ELEVATION. EXTENSIONS MAY BE USED.
- PHASES TO BE WIRED PER NEMA REQUIREMENTS.
- SALVAGE AND REINSTALL EXISTING LEFT TURN YIELD ON GREEN BALL SIGNS.
- TRAIN PREEMPTION SHALL HAVE PRIORITY OVER EMERGENCY VEHICLE PREEMPTION CALLS.
- IF TRAIN PREEMPTION IS INITIATED DURING PHASES 2 & 6, ANY PEDESTRIAN CALLS FOR PHASE 4 SHOULD BE SKIPPED.
- FINAL EMERGENCY PREEMPTION TIMINGS TO BE DETERMINED AFTER INSTALLATION WITH INPUT FROM LOCAL EMERGENCY SERVICES DEPARTMENTS.

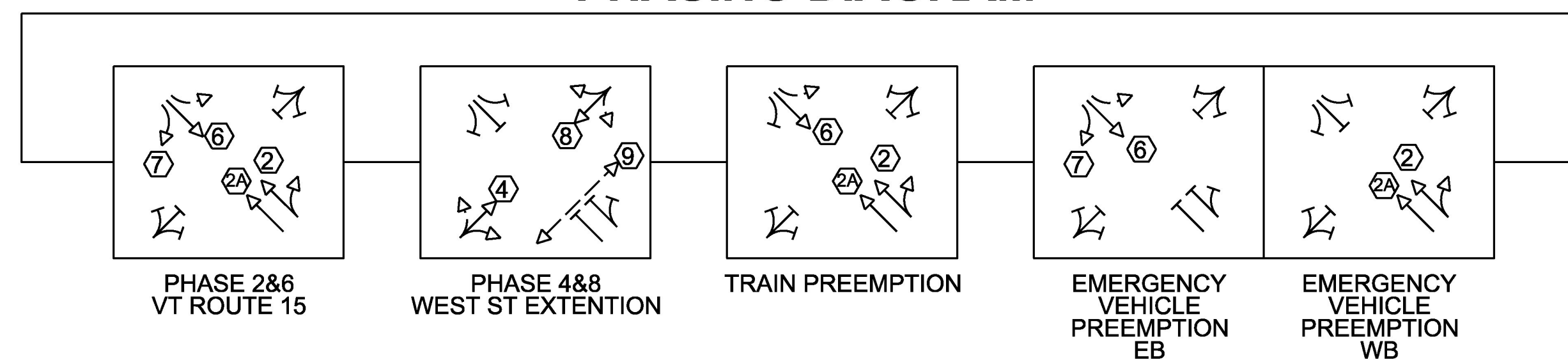
LIST OF MAJOR EQUIPMENT

ITEM 900.645 SPECIAL PROVISION (VEHICLE SIGNAL HEADS, LED)(VT 15 @ WEST STREET EXT.)	
NEW 12" LED SIGNAL HEADS (ONE-WAY, 3-SECTION, VISORS, DISCONNECT HANGERS, BACKPLATES, AND MOUNTING HARDWARE)	9
ITEM 900.620 SPECIAL PROVISION (PEDESTRIAN SIGNAL HEADS, COUNTDOWN)(VT 15 @ WEST STREET EXT.)	
ACCESSIBLE PEDESTRIAN PUSH BUTTONS	2
ACCESSIBLE COUNTDOWN PEDESTRIAN SIGNAL HEADS	2
ITEM 900.620 SPECIAL PROVISION (REMOVE AND REPLACE TRAFFIC SIGNAL CONTROLLER AND CABINET)(VT 15 @ WEST ST EXT.)	
NEMA POLE MOUNTED CONTROLLER CABINET GALVANIZED WITH ANCILLARY CONTROL EQUIPMENT	1
TRAFFIC SIGNAL CONTROLLER (NEMA TS2, Econolite ASC/3)	1
ITEM 900.620 SPECIAL PROVISION (VEHICLE PREEMPTION/STOP BAR DETECTION SYSTEM)(VT 15 @ WEST STREET EXT.)	
DETECTOR ASSEMBLY (Econolite Accuscan, EA)	2
DETECTION PROCESSOR (EA)	1
OPTICAL PREEMPTION DETECTORS	4
AC STROBE - RED	2
OPTICAL SIGNAL PROCESSOR CARD & CAGE	1

PROPOSED SIGNAL FACE ARRANGEMENTS



PHASING DIAGRAM



CONTROLLER TIMING CHART

PHASE	1	2	3	4	5	6	7	8	9	PREEMPTOR			
										1	2	3	
IN USE		X		X		X	X	X	X				
TRAFFIC MOVEMENT	←		↑		→	↓	↘	↙	PED	DIRECTION	TRAIN	VT 15 EB	VT 15 WB
MIN GREEN	8	8	8	8	8	8	8	8	8	HOLD PHASE	2&6	6	2
WALK	0	0	0	0	0	0	0	0	7	DET. LOCK	YES	YES	YES
PED CLR	0	0	0	0	0	0	0	0	19	DURATION TIME	DURATION	10	10
MAX 1-GREEN (OFF)	44	23	44	44	23	23	23	23	23	MIN. GREEN	15	4.0	4.0
MAX 2-GREEN (AM)	36	31	36	36	31	23	23	23	23	HOLD GREEN	5	12.0	12.0
MAX 3-GREEN (PM)	39	28	39	39	28	23	23	23	23	HOLD YELLOW	4	4.0	4.0
YELLOW CLEARANCE	4	4	4	4	4	4	4	4	4	HOLD RED	2	2.0	2.0
ALL RED CLEARANCE	2	2	2	2	2	2	2	2	3				
VEH. EXTENSION	0	1				0	0	1	2				
RECALL MODE	MAX					MAX	MAX						

LEGEND

- MAST ARM & POLE
- CONTROLLER CABINET
- PULLBOX
- DOUBLE PULLBOX OR JUNCTION BOX
- PEDESTAL POST
- SIGNAL HEAD WITH PHASE NO.
- CONDUIT
- MAST ARM MOUNTED SIGN
- VEHICLE DETECTOR
- VEHICLE DETECTION AREA
- PREEMPTION STROBE LIGHT & DETECTOR
- WIRELESS INTERCONNECT
- POWER STANCHION
- VEHICLE LOOPS

PROJECT NAME:	COLCHESTER-ESSEX
PROJECT NUMBER:	STPG SGNL (45)
FILE NAME:	004lay02.dgn
PROJECT LEADER:	S PALMER
DESIGNED BY:	S PALMER
MS552 SIGNAL PLAN	
PLOT DATE:	5/5/2016
DRAWN BY:	S PALMER
CHECKED BY:	D LYMAN
SHEET	171 OF 171