

**4 INCH WHITE LINE, LOW VOC CHLORINATED RUBBER PAINT AND TEMPORARY 4 INCH WHITE LINE, PAINT**  
 (ALL LINES WILL INCLUDE EDGE LINE BREAKS AND RADIUS FOR TOWN HIGHWAYS)  
**ESSEX JUNCTION:**  
 STA MA 47+00.00 - STA MA 47+42.00 SOLID LANE LINE RT  
 STA MA 47+00.00 - STA MA 52+50.00 EDGE LINE LT & RT  
 STA MA 47+30.00 - STA MA 48+20.00 EDGE LINE RT  
 STA MA 47+91.36 EDGE LINES LT, MAPLE STREET EXT  
 STA MA 47+91.36 EDGE LINES RT, ROBINSON PARKWAY  
 STA MA 48+36.00 - STA MA 52+28.00 SOLID LANE LINE LT  
 STA MA 49+34.00 - STA MA 49+67.00 EDGE LINE RT, RAMP  
 STA MA 52+28.00 - STA MA 52+50.00 DOTTED LANE LINE LT

**24 INCH STOP BAR, LOW VOC CHLORINATED RUBBER PAINT AND TEMPORARY 24 INCH STOP BAR, PAINT**  
**ESSEX JUNCTION:**  
 STA MA 47+85.00 RT  
 STA MA 47+91.36 LT, MAPLE STREET EXT  
 STA MA 47+91.36 RT, ROBINSON PARKWAY  
 STA MA 48+37.00 LT

**CROSSWALK MARKING, LOW VOC CHLORINATED RUBBER PAINT AND TEMPORARY CROSSWALK MARKING, PAINT**  
**ESSEX JUNCTION:**  
 STA MA 48+29.00 LT & RT  
 STA MA 51+34.00 LT & RT

**4 INCH YELLOW LINE, LOW VOC CHLORINATED RUBBER PAINT AND TEMPORARY 4 INCH YELLOW LINE, PAINT**  
 (ALL LINES WILL INCLUDE C/L LINE BREAKS FOR TOWN HIGHWAYS)  
 S = SOLID, D = DASHED  
**ESSEX JUNCTION:**  
 STA MA 48+36.00 - STA MA 52+28.00 S - S  
 STA MA 47+00.00 - STA MA 47+85.00 DOUBLE SOLID MEDIAN LT & C/L  
 STA MA 47+91.36 DOUBLE SOLID LT, MAPLE STREET EXT  
 STA MA 47+91.36 DOUBLE SOLID RT, ROBINSON PARKWAY  
 STA MA 49+26.00 - STA MA 49+67.00 EDGE LINE RT, RAMP  
 STA MA 52+28.00 - STA MA 52+50.00 DOUBLE SOLID MEDIAN LT & C/L

**PAINTED CURB (YELLOW)**  
**ESSEX JUNCTION:**  
 STA MA 47+78.00 - STA MA 48+02.00 RT

**TEMPORARY LETTER OR SYMBOL, PAINT**  
**ESSEX JUNCTION:**  
 STA MA 47+40.00 RT, ARROW (2 EA)  
 STA MA 47+91.36 RT, ROBINSON PARKWAY YIELD LINE (14 EA)  
 STA MA 47+91.36 RT, ROBINSON PARKWAY YIELD LINE (8 EA)  
 STA MA 47+91.36 RT, ROBINSON PARKWAY ARROW (2 EA)  
 STA MA 48+46.00 LT, ARROW (2 EA)  
 STA MA 49+72.00 LT, ARROW (2 EA)  
 STA MA 50+98.00 LT, ARROW (2 EA)  
 STA MA 52+24.00 LT, ARROW (2 EA)

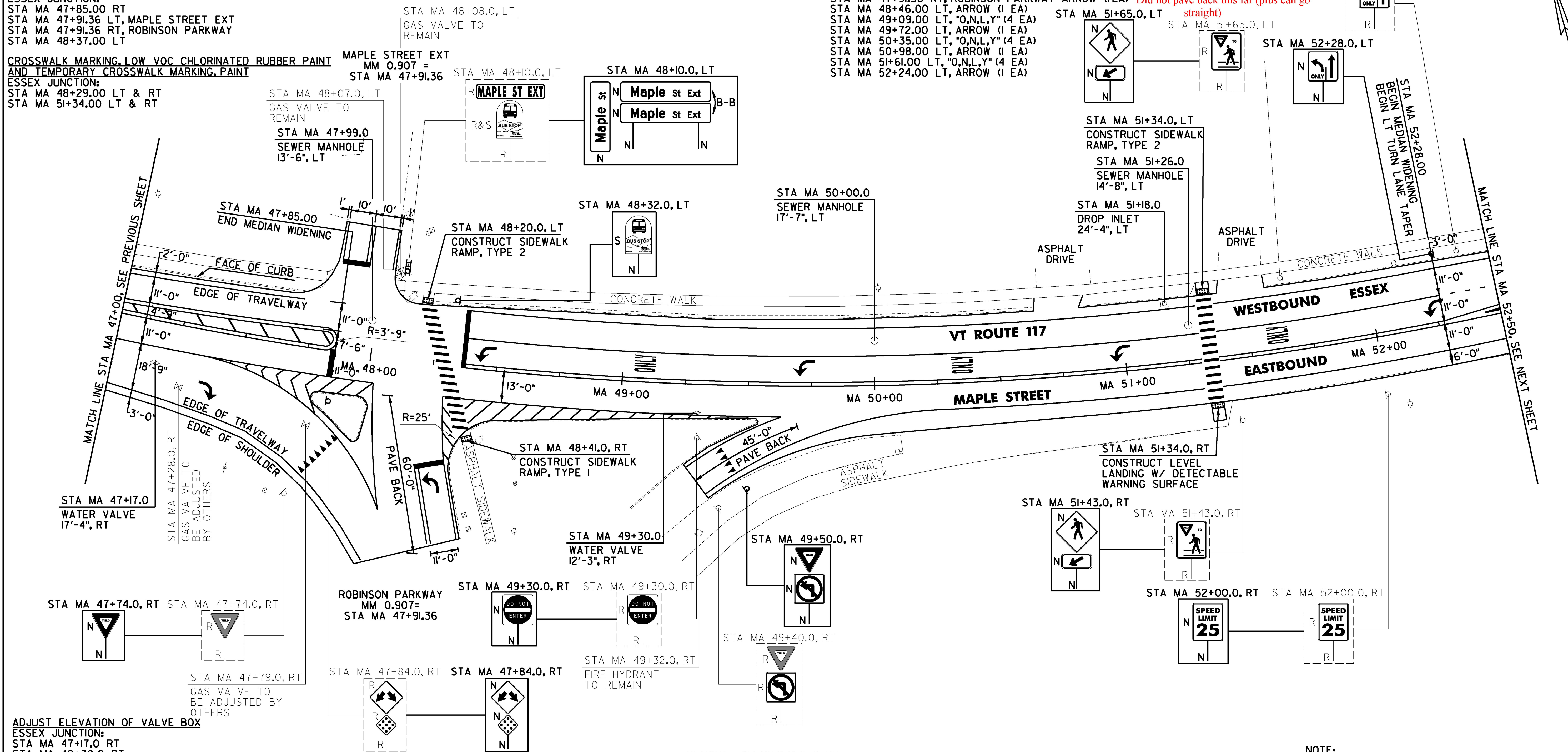
**LETTER OR SYMBOL, LOW VOC CHLORINATED RUBBER PAINT**  
**ESSEX JUNCTION:**  
 STA MA 47+40.00 RT, ARROW (1 EA)  
 STA MA 47+91.36 RT, ROBINSON PARKWAY YIELD LINE (7 EA)  
 STA MA 47+91.36 RT, ROBINSON PARKWAY YIELD LINE (4 EA)  
~~STA MA 47+91.36 RT, ROBINSON PARKWAY ARROW (1 EA)~~ *Did not pave back this far (plus can go straight)*  
 STA MA 48+46.00 LT, ARROW (1 EA)  
 STA MA 49+09.00 LT, "O,N,L,Y" (4 EA)  
 STA MA 49+72.00 LT, ARROW (1 EA)  
 STA MA 50+35.00 LT, "O,N,L,Y" (4 EA)  
 STA MA 50+98.00 LT, ARROW (1 EA)  
 STA MA 51+61.00 LT, "O,N,L,Y" (4 EA)  
 STA MA 52+24.00 LT, ARROW (1 EA)

**8 INCH YELLOW LINE, LOW VOC CHLORINATED RUBBER PAINT**  
**ESSEX JUNCTION:**  
 STA MA 47+00.00 - STA MA 47+85.00 MEDIAN HATCH C/L & LT  
 STA MA 52+28.00 - STA MA 52+50.00 MEDIAN HATCH LT

**8 INCH WHITE LINE, LOW VOC CHLORINATED RUBBER PAINT**  
**ESSEX JUNCTION:**  
 STA MA 47+42.00 - STA MA 48+02.00 HATCHED GORE AREA RT  
 STA MA 48+32.00 - STA MA 49+39.00 HATCHED GORE AREA RT

**ERECTING SALVAGED SIGNS**  
 AS SHOWN - 1

**REMOVING SIGNS**  
 AS SHOWN - 12



**ADJUST ELEVATION OF VALVE BOX**  
**ESSEX JUNCTION:**  
 STA MA 47+17.0 RT  
 STA MA 49+30.0 RT

**REHAB DROP INLETS, CATCH BASINS, OR MANHOLES, CLASS I, II OR III**  
**ESSEX JUNCTION:**  
 STA MA 51+18.0 LT **MA 50+00 LT**

**CHANGING ELEVATION OF SEWER MANHOLES**  
**ESSEX JUNCTION:**  
 STA MA 47+99.0 LT  
~~STA MA 50+00.0 LT~~  
 STA MA 51+26.0 LT

**DETECTABLE WARNING SURFACE**  
**ESSEX JUNCTION:**  
 STA MA 48+20.0 LT  
 STA MA 48+41.0 RT  
 STA MA 51+34.0 LT  
 STA MA 51+34.0 RT

**PORTLAND CEMENT CONCRETE SIDEWALK, 5 INCH**  
**ESSEX JUNCTION:**  
 STA MA 48+20.0 LT  
 STA MA 48+41.0 RT  
 STA MA 51+34.0 LT  
 STA MA 51+34.0 RT

**REMOVAL OF EXISTING CURB**  
**ESSEX JUNCTION:**  
~~STA MA 48+20.0 LT~~  
~~STA MA 48+41.0 RT~~  
~~STA MA 51+34.0 LT~~

**CAST-IN-PLACE CONCRETE CURB, TYPE B**  
**ESSEX JUNCTION:**  
 STA MA 48+20.0 LT **MA 51+34 RT**  
 STA MA 48+41.0 RT  
 STA MA 51+34.0 LT

**SIGN LEGEND**  
 R = REMOVE  
 S = SALVAGE  
 N = NEW  
 RET = RETAIN  
 B-B = BACK TO BACK  
 EXISTING =   
 NEW =   
 ⊙ = RETURN TO VILLAGE OF ESSEX JUNCTION

**NOT TO SCALE**

**NOTE:**  
 1. SEE SHEET 160 FOR TRAFFIC SIGNAL PLAN SHEET.

<b>PROJECT NAME:</b> ESSEX JUNCTION	
<b>PROJECT NUMBER:</b> NH 2956(2)	
<b>FILE NAME:</b> z15v026bdr.dgn	<b>PLOT DATE:</b> 4/19/2016
<b>PROJECT LEADER:</b> D.GOZALKOWSKI	<b>DRAWN BY:</b> C. KAHLBAUGH
<b>DESIGNED BY:</b> J. SCUDDER	<b>CHECKED BY:</b> J. SHIELDS
<b>PLAN SHEET 33</b>	<b>SHEET 115 OF 171</b>