

4 INCH WHITE LINE, LOW VOC CHLORINATED RUBBER PAINT AND TEMPORARY 4 INCH WHITE LINE, PAINT
 (ALL LINES WILL INCLUDE EDGE LINE BREAKS AND RADIUS FOR TOWN HIGHWAYS)

ESSEX JUNCTION:
 STA MA 27+00.00 - STA MA 28+20.00 BIKE LANE LINE RT
 STA MA 27+00.00 - STA MA 28+20.00 HATCH BUFFER RT
 STA MA 27+00.00 - STA MA 29+42.00 BIKE LANE LINE LT
 STA MA 27+00.00 - STA MA 29+42.00 HATCH BUFFER LT
 STA MA 28+20.00 - STA MA 28+44.00 DOTTED BIKE LANE LINE RT
 STA MA 28+44.00 - STA MA 32+00.00 BIKE LANE LINE RT
 STA MA 28+44.00 - STA MA 32+00.00 HATCH BUFFER RT
 STA MA 29+42.00 - STA MA 30+06.00 DOTTED BIKE LANE LINE LT
 STA MA 30+06.00 - STA MA 32+00.00 BIKE LANE LINE LT
 STA MA 30+06.00 - STA MA 32+00.00 HATCH BUFFER LT
 STA MA 29+72.64 EDGE LINES LT, MAPLEWOOD LANE

4 INCH YELLOW LINE, LOW VOC CHLORINATED RUBBER PAINT AND TEMPORARY 4 INCH YELLOW LINE, PAINT
 (ALL LINES WILL INCLUDE C/L LINE BREAKS FOR TOWN HIGHWAYS)

S = SOLID, D = DASHED
 ESSEX JUNCTION:
 STA MA 27+00.00 - STA MA 32+00.00 LT & RT
 STA MA 29+72.64 DOUBLE SOLID LT, MAPLEWOOD LANE

6 INCH WHITE LINE, LOW VOC CHLORINATED RUBBER PAINT AND TEMPORARY 6 INCH WHITE LINE, PAINT
 (ALL LINES WILL INCLUDE EDGE LINE BREAKS AND RADIUS FOR TOWN HIGHWAYS)

ESSEX JUNCTION:
 STA MA 27+00.00 - STA MA 28+20.00 BIKE LANE EDGE LINE RT
 STA MA 27+00.00 - STA MA 29+42.00 BIKE LANE EDGE LINE LT
 STA MA 28+44.00 - STA MA 32+00.00 BIKE LANE EDGE LINE RT
 STA MA 30+06.00 - STA MA 32+00.00 BIKE LANE EDGE LINE LT

24 INCH STOP BAR, LOW VOC CHLORINATED RUBBER PAINT AND TEMPORARY 24 INCH STOP BAR, PAINT

ESSEX JUNCTION:
 STA MA 29+72.64 LT, MAPLEWOOD LANE

CROSSWALK MARKING, LOW VOC CHLORINATED RUBBER PAINT AND TEMPORARY CROSSWALK MARKING, PAINT

ESSEX JUNCTION:
 STA MA 28+62.00 LT & RT
 STA MA 29+72.64 LT, MAPLEWOOD LANE

TEMPORARY LETTER OR SYMBOL, PAINT

ESSEX JUNCTION:
 STA MA 28+90.00 LT, BIKE LANE SYMBOL (2 EA)
 STA MA 30+13.00 RT, BIKE LANE SYMBOL (2 EA)
 STA MA 31+25.00 RT, "S,C,H,O,O,L" (12 EA)

LETTER OR SYMBOL, LOW VOC CHLORINATED RUBBER PAINT

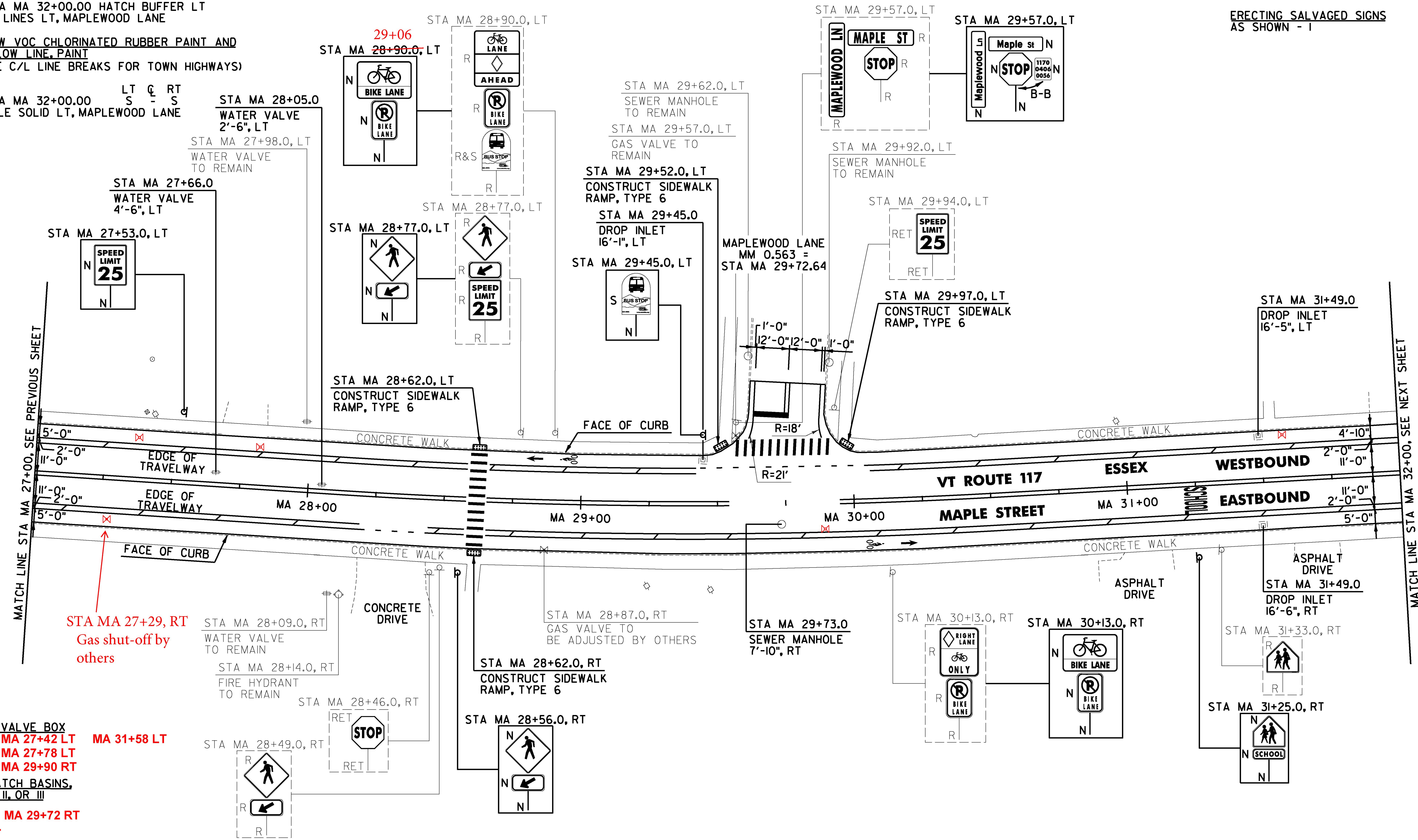
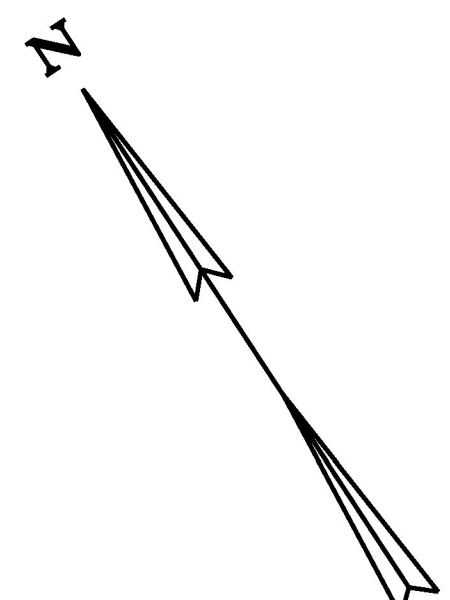
ESSEX JUNCTION:
 STA MA 28+90.00 LT, BIKE LANE SYMBOL (1 EA)
 STA MA 30+13.00 RT, BIKE LANE SYMBOL (1 EA)
 STA MA 31+25.00 RT, "S,C,H,O,O,L" (6 EA)

REMOVING SIGNS

AS SHOWN - 14

ERECTING SALVAGED SIGNS

AS SHOWN - 1



ADJUST ELEVATION OF VALVE BOX
 ESSEX JUNCTION:
 STA MA 27+66.0 LT MA 27+42 LT MA 31+58 LT
 STA MA 28+05.0 LT MA 27+78 LT
 STA MA 28+05.0 LT MA 29+90 RT

REHAB. DROP INLETS, CATCH BASINS, OR MANHOLES, CLASS I, II, OR III
 ESSEX JUNCTION:
 STA MA 29+45.0 LT MA 29+72 RT
~~STA MA 31+49.0 LT~~
 STA MA 31+49.0 RT

CHANGING ELEVATION OF SEWER MANHOLES
 ESSEX JUNCTION:
 STA MA 29+73.0 RT MA 31+49 LT

DETECTABLE WARNING SURFACE
 ESSEX JUNCTION:
 STA MA 28+62.0 LT
 STA MA 28+62.0 RT
 STA MA 29+52.0 LT
 STA MA 29+97.0 LT

PORTLAND CEMENT CONCRETE SIDEWALK, 5 INCH
 ESSEX JUNCTION:
 STA MA 28+62.0 LT
 STA MA 28+62.0 RT
 STA MA 29+52.0 LT
 STA MA 29+97.0 LT

CAST-IN-PLACE CONCRETE CURB, TYPE B
 ESSEX JUNCTION:
 STA MA 28+62.0 LT
~~STA MA 28+62.0 RT~~
 STA MA 29+52.0 LT
 STA MA 29+97.0 LT

REMOVAL OF EXISTING CURB
 ESSEX JUNCTION:
 STA MA 28+62.0 LT
~~STA MA 28+62.0 RT~~
 STA MA 29+52.0 LT
 STA MA 29+97.0 LT

SIGN LEGEND
 R = REMOVE
 S = SALVAGE
 N = NEW
 RET = RETAIN
 B-B = BACK TO BACK
 EXISTING =
 NEW =
 R = RETURN TO VILLAGE OF ESSEX JUNCTION

NOT TO SCALE



PROJECT NAME: ESSEX JUNCTION
 PROJECT NUMBER: NH 2956(2)

FILE NAME: z15v026bdr.dgn
 PROJECT LEADER: D.GOZALKOWSKI
 DESIGNED BY: J. SCUDDER
 PLAN SHEET 29

PLOT DATE: 4/19/2016
 DRAWN BY: C. KAHLBAUGH
 CHECKED BY: J. SHIELDS
 SHEET III OF 171