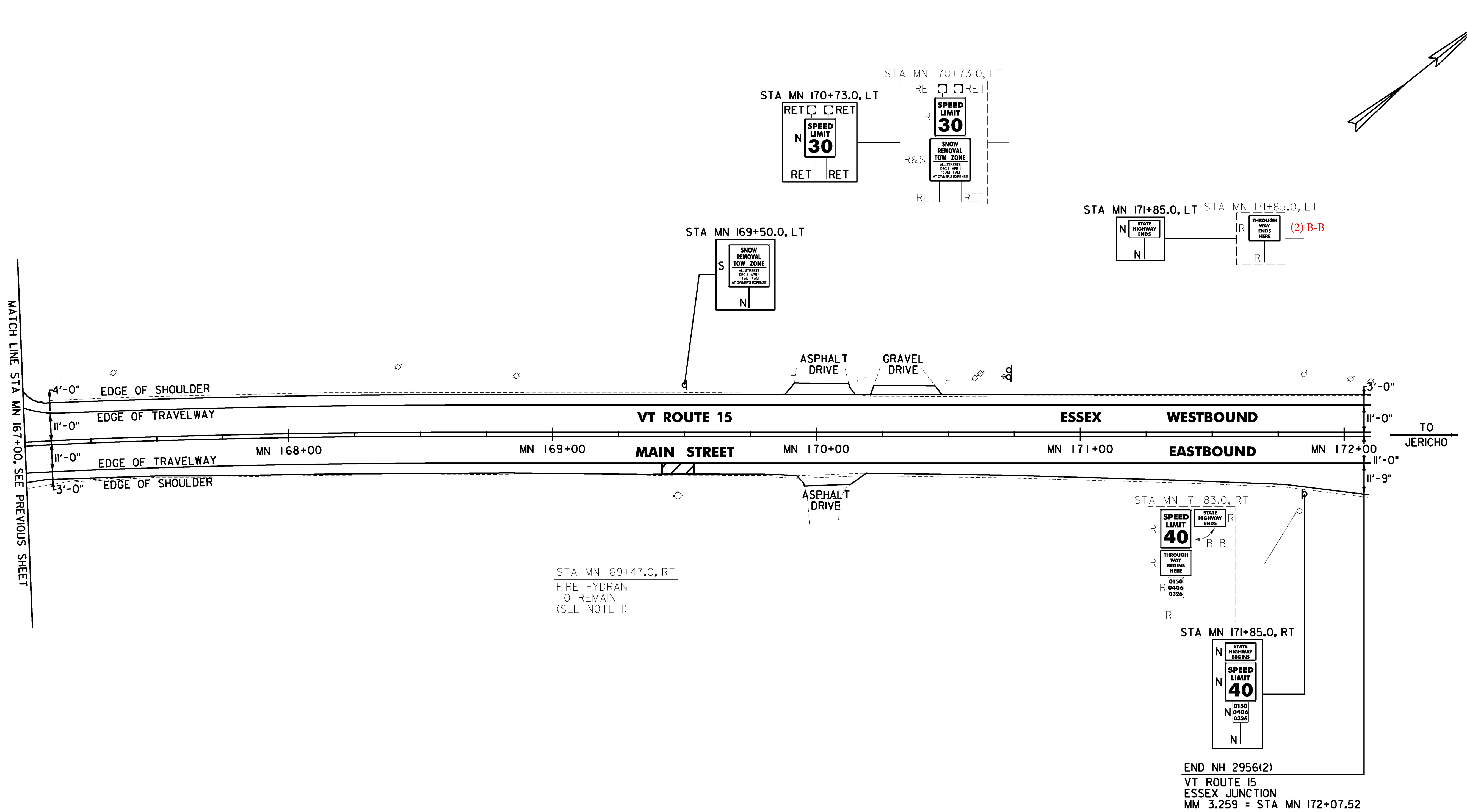


4 INCH WHITE LINE, LOW VOC CHLORINATED RUBBER PAINT AND  
 TEMPORARY 4 INCH WHITE LINE PAINT  
 (ALL LINES WILL INCLUDE EDGE LINE BREAKS AND  
 RADIUS FOR TOWN HIGHWAYS)  
 ESSEX:  
 STA MN 167+00.00 - STA MN 172+07.52 EDGE LINE LT & RT

4 INCH YELLOW LINE, LOW VOC CHLORINATED RUBBER PAINT AND  
 TEMPORARY 4 INCH YELLOW LINE PAINT  
 (ALL LINES WILL INCLUDE C/L LINE BREAKS FOR TOWN HIGHWAYS)  
 S = SOLID, D = DASHED  
 ESSEX JUNCTION:  
 STA MN 167+00.00 - STA MN 172+07.52  
 LT C RT  
 S - S

8 INCH WHITE LINE, LOW VOC CHLORINATED RUBBER PAINT  
 ESSEX JUNCTION:  
 STA MN 169+41.00 - STA MN 169+53.00 RT, FIRE HYDRANT, NO PARKING

REMOVING SIGNS  
 AS SHOWN - 7  
 ERECTING SALVAGED SIGNS  
 AS SHOWN - 1



MATCH LINE STA MN 167+00. SEE PREVIOUS SHEET

STA MN 169+47.0, RT  
 FIRE HYDRANT  
 TO REMAIN  
 (SEE NOTE 1)

END NH 2956(2)  
 VT ROUTE 15  
 ESSEX JUNCTION  
 MM 3.259 = STA MN 172+07.52

NOTE:  
 1. SEE SHEET 10 FOR FIRE HYDRANT PAVEMENT MARKING DETAIL.

**SIGN LEGEND**  
 R = REMOVE  
 S = SALVAGE  
 N = NEW  
 RET = RETAIN  
 B-B = BACK TO BACK  
 EXISTING = - - - - -  
 NEW = \_\_\_\_\_  
 R = RETURN TO VILLAGE  
 OF ESSEX JUNCTION

NOT TO SCALE  
**CHA**

PROJECT NAME: ESSEX JUNCTION	PLOT DATE: 4/19/2016
PROJECT NUMBER: NH 2956(2)	DRAWN BY: C. KAHLBAUGH
FILE NAME: z15v026bdr.dgn	CHECKED BY: J. SHIELDS
PROJECT LEADER: D.GOZALKOWSKI	SHEET 106 OF 171
DESIGNED BY: J. SCUDDER	
PLAN SHEET 24	