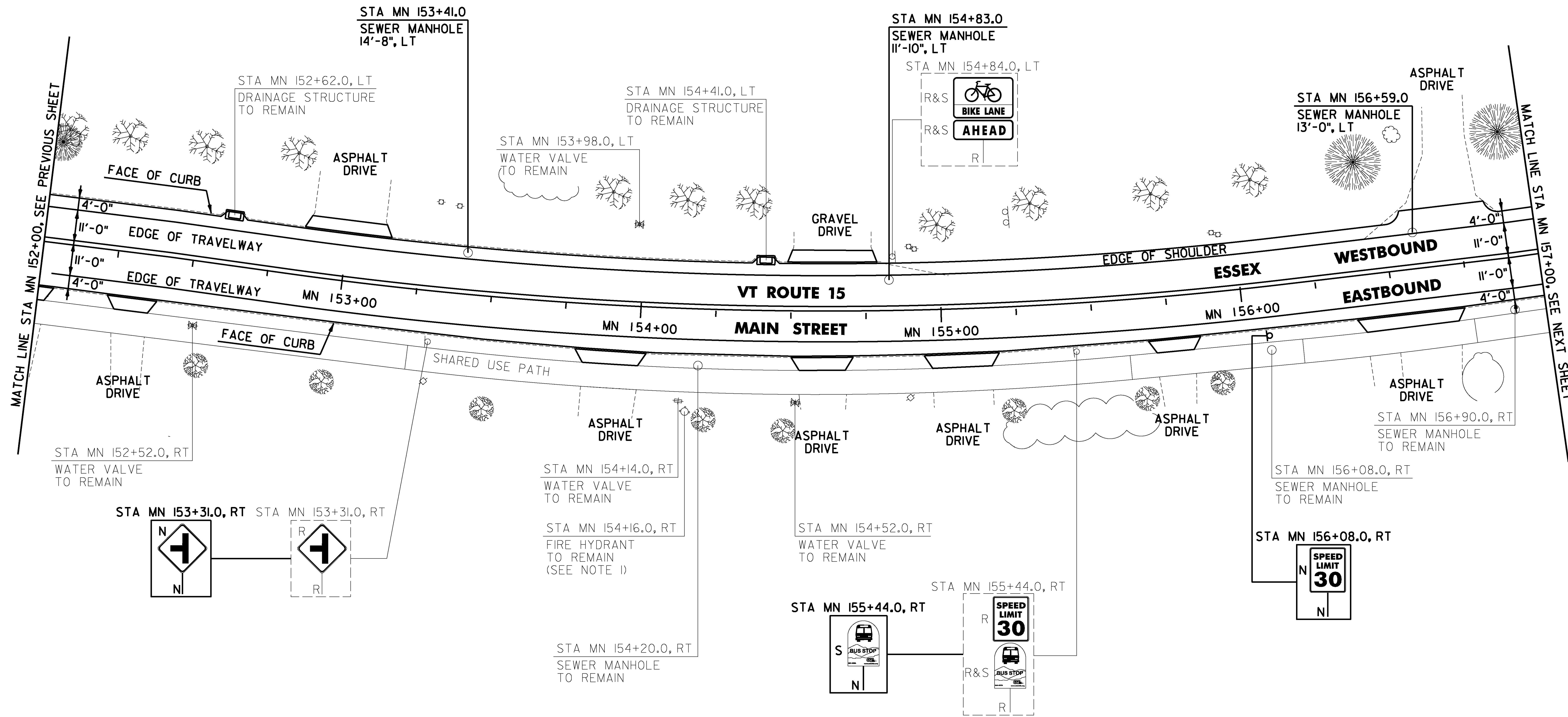
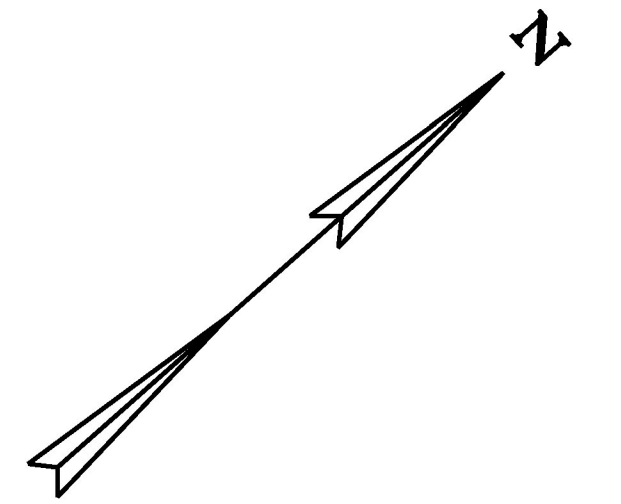


6 INCH WHITE LINE, LOW VOC CHLORINATED RUBBER PAINT AND TEMPORARY 6 INCH WHITE LINE PAINT
 (ALL LINES WILL INCLUDE EDGE LINE BREAKS AND RADIUS FOR TOWN HIGHWAYS)
 ESSEX JUNCTION:
 STA MN 152+00.00 - STA MN 152+05.00 DOTTED LANE LINE RT
 STA MN 152+00.00 - STA MN 157+00.00 BIKE LANE LINE LT
 STA MN 152+05.00 - STA MN 157+00.00 BIKE LANE LINE RT

4 INCH YELLOW LINE, LOW VOC CHLORINATED RUBBER PAINT AND TEMPORARY 4 INCH YELLOW LINE PAINT
 (ALL LINES WILL INCLUDE C/L LINE BREAKS FOR TOWN HIGHWAYS)
 S = SOLID, D = DASHED
 ESSEX JUNCTION:
 STA MN 152+00.00 - STA MN 157+00.00 DOUBLE SOLID LT

REMOVING SIGNS
 AS SHOWN - 5
ERECTING SALVAGED SIGNS
 AS SHOWN - 1



CHANGING ELEVATION OF SEWER MANHOLES
 ESSEX JUNCTION:
 STA MN 153+41.0 LT
 STA MN 154+83.0 LT
 STA MN 156+59.0 LT

SIGN LEGEND
 R = REMOVE
 S = SALVAGE
 N = NEW
 RET = RETAIN
 B-B = BACK TO BACK
 EXISTING = _____
 NEW = _____
 R = RETURN TO VILLAGE OF ESSEX JUNCTION

NOT TO SCALE
CHA

PROJECT NAME: ESSEX JUNCTION	PLOT DATE: 4/19/2016
PROJECT NUMBER: NH 2956(2)	DRAWN BY: C. KAHLBAUGH
FILE NAME: z15v026bdr.dgn	CHECKED BY: J. SHIELDS
DESIGNED BY: J. SCUDDER	SHEET 103 OF 171
PLAN SHEET 21	