

4 INCH WHITE LINE, LOW VOC CHLORINATED RUBBER PAINT AND TEMPORARY 4 INCH WHITE LINE, PAINT
 (ALL LINES WILL INCLUDE EDGE LINE BREAKS AND RADIUS FOR TOWN HIGHWAYS)
 ESSEX JUNCTION:
 STA MN 142+00.00 - STA MN 145+92.00 EDGE LINE RT
 STA MN 142+00.00 - STA MN 142+63.00 DOTTED LANE LINE LT
 STA MN 145+41.12 SOLID LANE LINE LT, CRESTVIEW ROAD
 STA MN 145+41.12 EDGE LINES RT, BRICKYARD ROAD
 STA MN 145+41.12 SOLID LANE LINE RT, BRICKYARD ROAD
 STA MN 145+80.00 - STA MN 146+92.00 SOLID LANE LINE LT
 STA MN 146+92.00 - STA MN 147+00.00 DOTTED LANE LINE LT

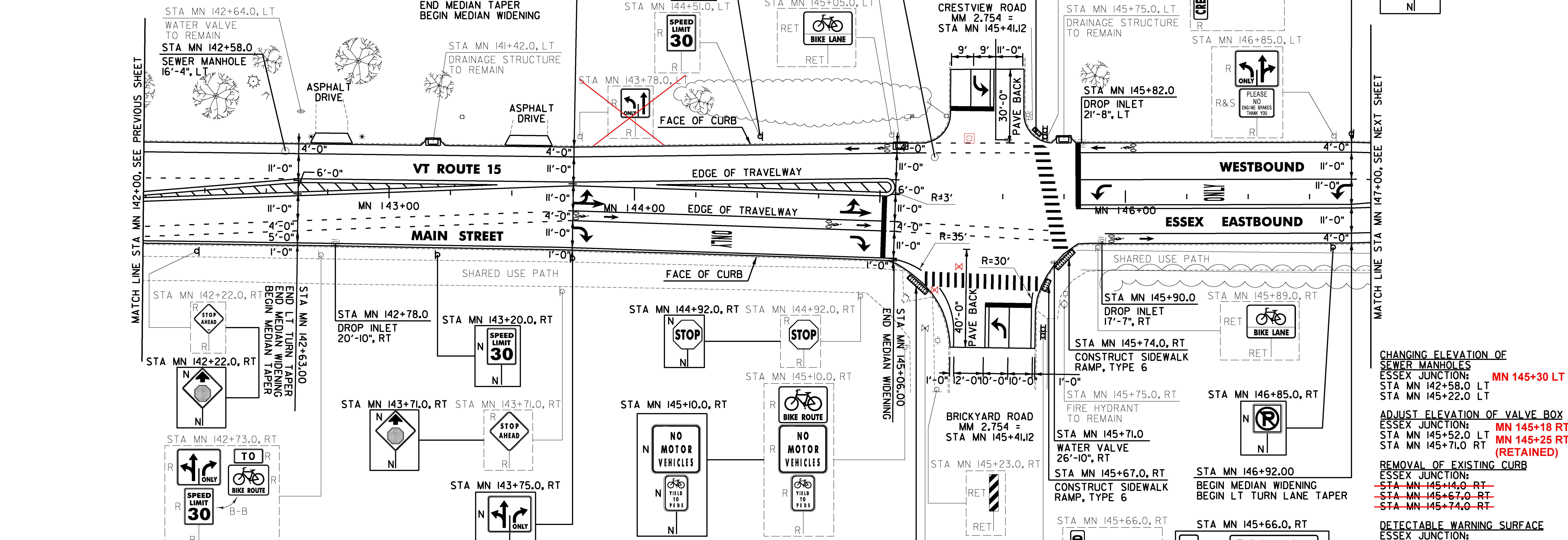
6 INCH WHITE LINE, LOW VOC CHLORINATED RUBBER PAINT AND TEMPORARY 6 INCH WHITE LINE, PAINT
 (ALL LINES WILL INCLUDE EDGE LINE BREAKS AND RADIUS FOR TOWN HIGHWAYS)
 ESSEX JUNCTION:
 STA MN 142+00.00 - STA MN 145+17.00 BIKE LANE LINE LT
 STA MN 142+00.00 - STA MN 143+75.00 DOTTED LANE LINES RT
 STA MN 143+75.00 - STA MN 145+03.00 BIKE LANE LINES RT
 STA MN 145+03.00 - STA MN 145+70.00 DOTTED LANE LINES RT
 STA MN 145+17.00 - STA MN 145+59.00 DOTTED LANE LINES LT
 STA MN 145+80.00 - STA MN 147+00.00 BIKE LANE LINE LT
 STA MN 145+92.00 - STA MN 147+00.00 BIKE LANE LINE RT

CROSSWALK MARKING, LOW VOC CHLORINATED RUBBER PAINT AND TEMPORARY CROSSWALK MARKING, PAINT
 ESSEX JUNCTION:
 STA MN 145+41.12 RT, BRICKYARD ROAD
 STA MN 145+69.00 LT & RT
 24 INCH STOP BAR, LOW VOC CHLORINATED RUBBER PAINT AND TEMPORARY 24 INCH STOP BAR, PAINT
 ESSEX JUNCTION:
 STA MN 145+02.00 RT
 STA MN 145+41.12 LT, CRESTVIEW ROAD
 STA MN 145+41.12 RT, BRICKYARD ROAD
 STA MN 145+81.00 LT & RT

REMOVING SIGNS AS SHOWN - 18

4 INCH YELLOW LINE, LOW VOC CHLORINATED RUBBER PAINT AND TEMPORARY 4 INCH YELLOW LINE, PAINT
 (ALL LINES WILL INCLUDE C/L LINE BREAKS FOR TOWN HIGHWAYS)
 S = SOLID, D = DASHED
 ESSEX JUNCTION:
 STA MN 142+00.00 - STA MN 143+75.00 DOUBLE SOLID MEDIAN LT & RT
 STA MN 143+75.00 - STA MN 145+06.00 DOUBLE SOLID MEDIAN LT
 STA MN 145+41.12 DOUBLE SOLID LT, CRESTVIEW ROAD
 STA MN 145+41.12 DOUBLE SOLID RT, BRICKYARD ROAD
 STA MN 145+80.00 - STA MN 146+92.00 DOUBLE SOLID RT
 STA MN 146+92.00 - STA MN 147+00.00 DOUBLE SOLID MEDIAN RT

8 INCH YELLOW LINE, LOW VOC CHLORINATED RUBBER PAINT
 ESSEX JUNCTION:
 STA MN 142+00.00 - STA MN 143+75.00 HATCH MEDIAN LT & RT
 STA MN 143+75.00 - STA MN 145+06.00 HATCH MEDIAN LT
 STA MN 146+92.00 - STA MN 147+00.00 HATCH MEDIAN RT



NOTE:

1. SEE SHEET 159 FOR TRAFFIC SIGNAL PLAN SHEET.

LETTER OR SYMBOL, LOW VOC CHLORINATED RUBBER PAINT
 ESSEX JUNCTION:
 STA MN 143+79.00 RT, ARROWS (2 EA)
 STA MN 143+85.00 RT, BIKE LANE SYMBOL (1EA)
 STA MN 144+36.00 RT, "O,N,L,Y" (4 EA)
 STA MN 144+88.00 RT, BIKE LANE SYMBOL (1EA)
 STA MN 144+93.00 RT, ARROWS (2 EA)
 STA MN 144+93.00 RT, ARROW (1EA)
 STA MN 144+94.00 LT, BIKE LANE SYMBOL (1EA)
 STA MN 145+41.12 LT, CRESTVIEW ROAD ARROW (1EA)
 STA MN 145+41.12 RT, BRICKYARD ROAD ARROW (1EA)
 STA MN 145+90.00 LT, ARROW (1EA)
 STA MN 145+95.00 LT, BIKE LANE SYMBOL (1EA)
 STA MN 146+03.00 RT, BIKE LANE SYMBOL (1EA)
 STA MN 146+39.00 LT, "O,N,L,Y" (4 EA)
 STA MN 146+88.00 LT, ARROW (1EA)

TEMPORARY LETTER OR SYMBOL, PAINT
 ESSEX JUNCTION:
 STA MN 143+79.00 RT, ARROWS (4 EA)
 STA MN 143+79.00 RT, ARROW (2 EA)
 STA MN 143+85.00 RT, BIKE LANE SYMBOL (2 EA)
 STA MN 144+88.00 RT, BIKE LANE SYMBOL (2 EA)
 STA MN 144+93.00 RT, ARROWS (4 EA)
 STA MN 144+93.00 RT, ARROW (2 EA)
 STA MN 144+94.00 LT, BIKE LANE SYMBOL (2 EA)
 STA MN 145+41.12 LT, CRESTVIEW ROAD ARROW (2 EA)
 STA MN 145+41.12 RT, BRICKYARD ROAD ARROW (2 EA)
 STA MN 145+90.00 LT, ARROW (2 EA)
 STA MN 145+95.00 LT, BIKE LANE SYMBOL (2 EA)
 STA MN 146+03.00 RT, BIKE LANE SYMBOL (2 EA)
 STA MN 146+88.00 LT, ARROW (2 EA)

CAST-IN-PLACE CONCRETE CURB, TYPE B
 ESSEX JUNCTION:
~~STA MN 145+14.0 RT~~
~~STA MN 145+67.0 RT~~
~~STA MN 145+74.0 RT~~
 REHAB, DROP INLETS, CATCH BASINS, OR MANHOLES, CLASS I, II OR III
 ESSEX JUNCTION:
 STA MN 142+78.0 RT
~~STA MN 145+82.0 LT~~
 STA MN 145+90.0 RT

SIGN LEGEND
 R = REMOVE
 S = SALVAGE
 N = NEW
 RET = RETAIN
 B-B = BACK TO BACK
 EXISTING = _____
 NEW = _____
 R = RETURN TO VILLAGE OF ESSEX JUNCTION

NOT TO SCALE



AT THE REQUEST OF THE VILLAGE OF ESSEX, THIS GROUP OF SIGNS WAS MOVED TO MN 145+25 RT. PER CMMJ AND JPH 12/12/2017

PROJECT NAME: ESSEX JUNCTION
 PROJECT NUMBER: NH 2956(2)

FILE NAME: z15v026bdr.dgn
 PROJECT LEADER: D.GOZALKOWSKI
 DESIGNED BY: J. SCUDDER
 PLAN SHEET 19

PLOT DATE: 4/19/2016
 DRAWN BY: C. KAHLBAUGH
 CHECKED BY: J. SHIELDS
 SHEET 101 OF 171

MATCH LINE STA MN 147+00, SEE NEXT SHEET

MATCH LINE STA MN 142+00, SEE PREVIOUS SHEET