

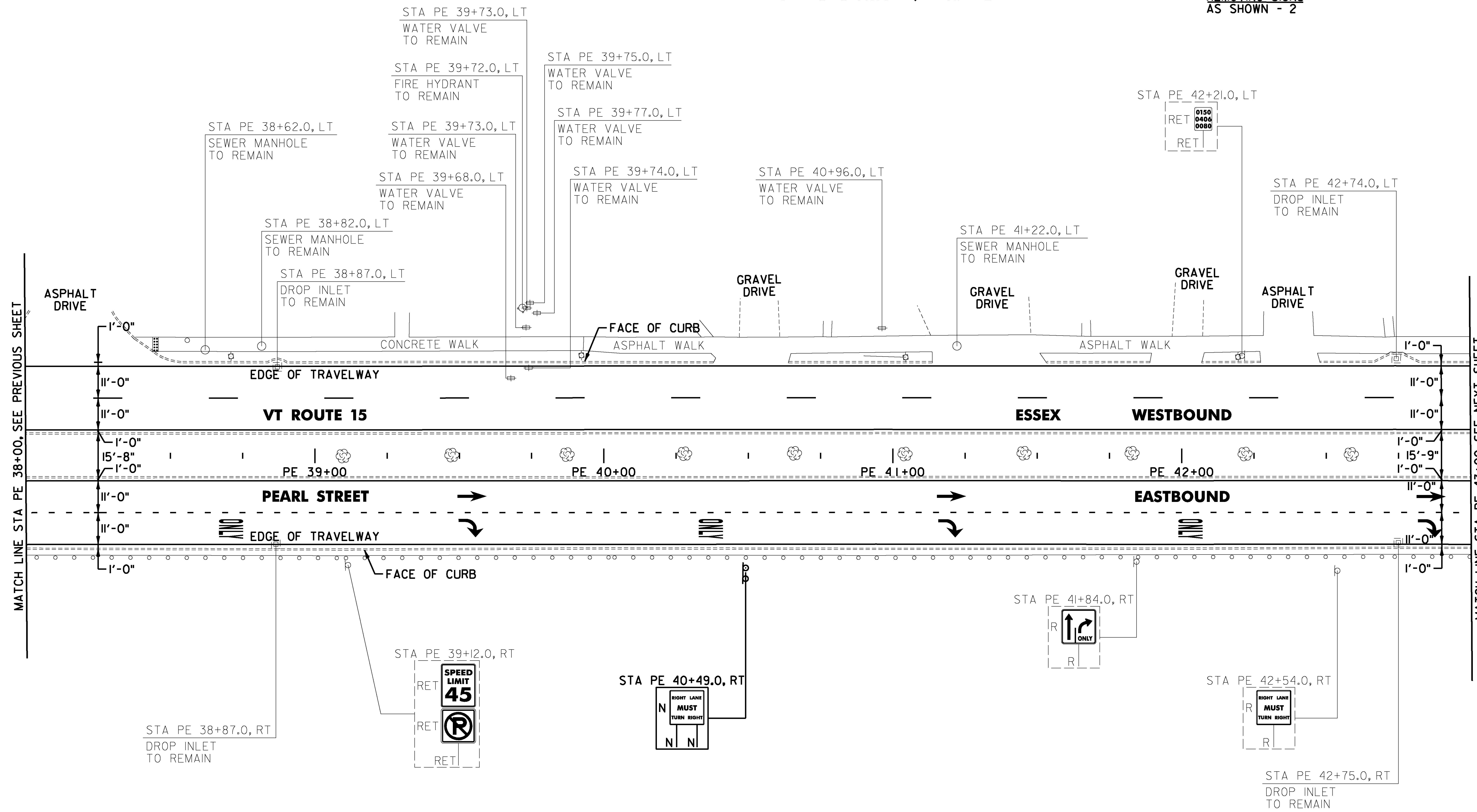
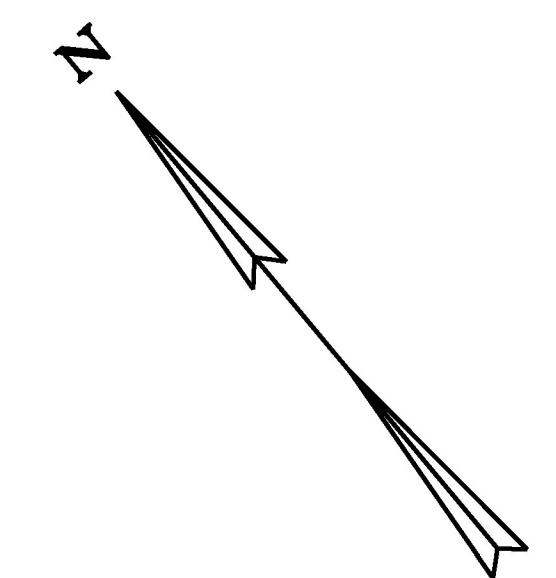
4 INCH WHITE LINE, LOW VOC CHLORINATED RUBBER PAINT
 (ALL LINES WILL INCLUDE EDGE LINE BREAKS AND RADIUS FOR TOWN HIGHWAYS)
ESSEX JUNCTION:
 STA PE 38+00.00 - STA PE 43+00.00 EDGE LINE LT & RT
 STA PE 38+00.00 - STA PE 43+00.00 DASHED LANE LINE LT
 STA PE 38+00.00 - STA PE 43+00.00 DOTTED LANE LINE RT

4 INCH YELLOW LINE, LOW VOC CHLORINATED RUBBER PAINT
 (ALL LINES WILL INCLUDE C/L LINE BREAKS FOR TOWN HIGHWAYS)
 S = SOLID, D = DASHED
ESSEX JUNCTION:
 STA PE 38+00.00 - STA PE 43+00.00 MEDIAN EDGE LINE LT
 STA PE 38+00.00 - STA PE 43+00.00 MEDIAN EDGE LINE RT

LETTER OR SYMBOL, LOW VOC CHLORINATED RUBBER PAINT
ESSEX JUNCTION:
 STA PE 38+71.00 RT, "O,N,L,Y" (4 EA)
 STA PE 39+54.00 RT, ARROW (1 EA)
 STA PE 39+54.00 RT, ARROW (1 EA)
 STA PE 40+37.00 RT, "O,N,L,Y" (4 EA)
 STA PE 41+20.00 RT, ARROW (1 EA)
 STA PE 41+20.00 RT, ARROW (1 EA)
 STA PE 42+03.00 RT, "O,N,L,Y" (4 EA)
 STA PE 42+86.00 RT, ARROW (1 EA)
 STA PE 42+86.00 RT, ARROW (1 EA)

REMOVAL OF EXISTING PAVEMENT MARKINGS
ESSEX JUNCTION:
 STA PE 38+00.00 - STA PE 43+00.00 DASHED LANE LINE RT
 STA PE 38+39.00 RT, ARROWS
 STA PE 39+21.00 RT, "O,N,L,Y"
 STA PE 40+13.00 RT, ARROWS
 STA PE 40+88.00 RT, "O,N,L,Y"
 STA PE 41+83.00 RT, ARROWS
 STA PE 42+67.00 RT, "O,N,L,Y"

REMOVING SIGNS
 AS SHOWN - 2



MATCH LINE STA PE 38+00, SEE PREVIOUS SHEET

MATCH LINE STA PE 43+00, SEE NEXT SHEET

SIGN LEGEND
 R = REMOVE
 S = SALVAGE
 N = NEW
 RET = RETAIN
 B-B = BACK TO BACK
 EXISTING =
 NEW =
 R = RETURN TO VILLAGE OF ESSEX JUNCTION

NOT TO SCALE

PROJECT NAME: ESSEX JUNCTION	
PROJECT NUMBER: NH 2956(2)	
FILE NAME: z15v026bdr.dgn	PLOT DATE: 4/19/2016
PROJECT LEADER: D.GOZALKOWSKI	DRAWN BY: C. KAHLBAUGH
DESIGNED BY: J. SCUDDER	CHECKED BY: J. SHIELDS
PLAN SHEET 3	SHEET 85 OF 171