

4 INCH WHITE LINE, LOW VOC CHLORINATED RUBBER PAINT AND TEMPORARY 4 INCH WHITE LINE, PAINT  
 (ALL LINES WILL INCLUDE EDGE LINE BREAKS AND RADIUS FOR TOWN HIGHWAYS)  
 ESSEX JUNCTION:  
 STA L 52+50.00 - STA L 58+02.72 EDGE LINE LT  
 STA L 52+50.00 - STA L 56+07.00 EDGE LINE RT  
 STA L 55+59.84 RT SOLID LANE LINE, NORTH STREET  
 STA L 55+59.84 EDGE LINE RT, NORTH STREET

4 INCH YELLOW LINE, LOW VOC CHLORINATED RUBBER PAINT AND TEMPORARY 4 INCH YELLOW LINE, PAINT  
 (ALL LINES WILL INCLUDE C/L LINE BREAKS FOR TOWN HIGHWAYS) S = SOLID, D = DASHED  
 ESSEX JUNCTION:  
 STA L 52+50.00 - STA L 57+00.00 LT & RT  
 STA L 55+59.84 DOUBLE SOLID RT, NORTH STREET  
 STA L 57+00.00 - STA L 58+02.72 DOUBLE SOLID RT

TEMPORARY LETTER OR SYMBOL, PAINT  
 ESSEX JUNCTION:  
 STA L 55+59.84 RT, NORTH STREET ARROW (2 EA)  
 STA L 55+59.84 RT, NORTH STREET ARROW (2 EA)  
 STA L 56+16.00 RT, BIKE LANE SYMBOL (2 EA)

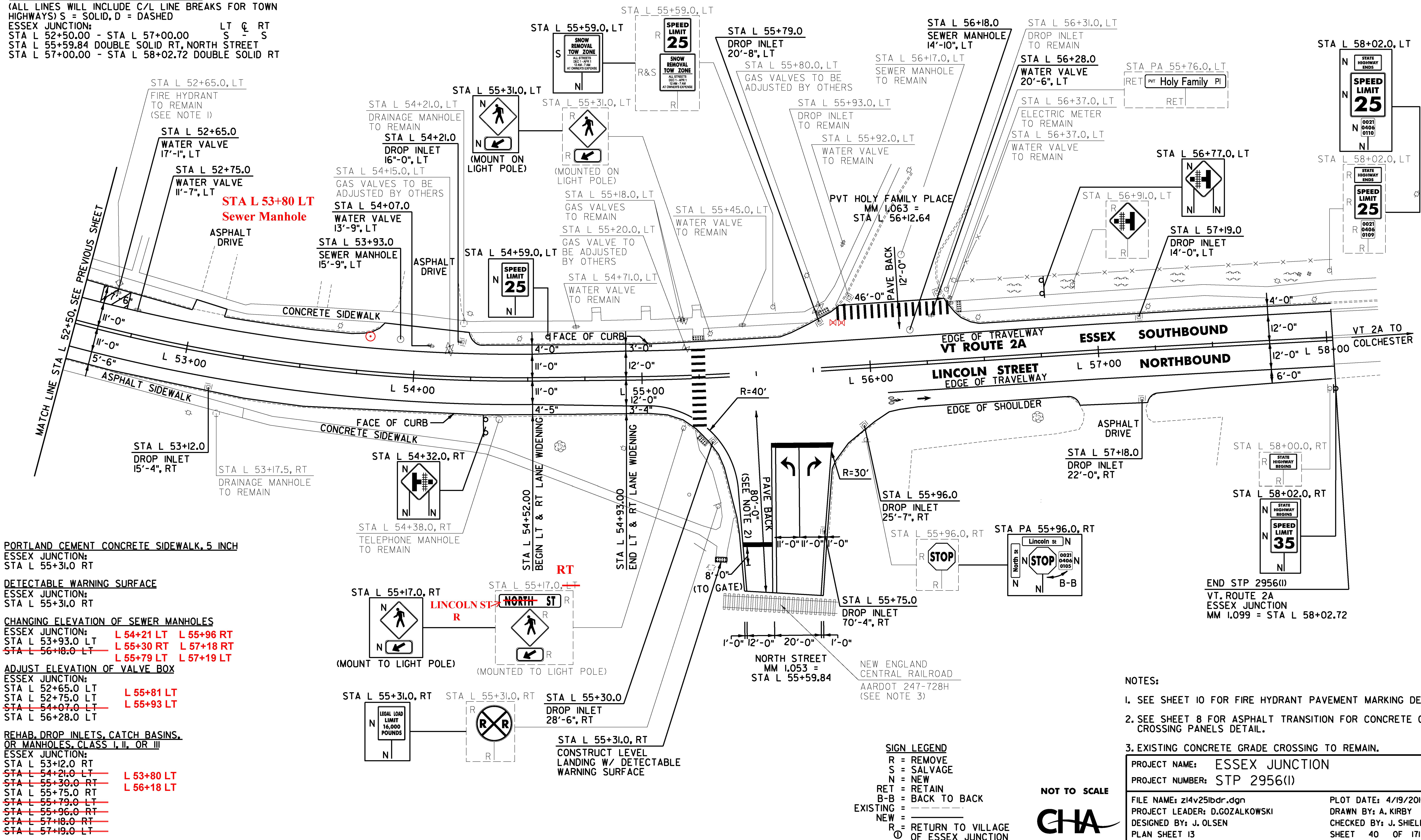
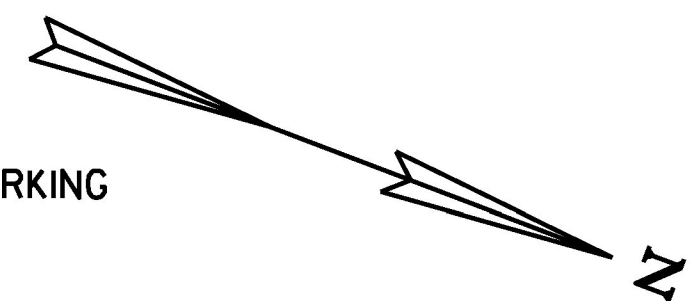
LETTER OR SYMBOL, LOW VOC CHLORINATED RUBBER PAINT  
 ESSEX JUNCTION:  
 STA L 55+59.84 RT, NORTH STREET ARROW (1 EA)  
 STA L 55+59.84 RT, NORTH STREET ARROW (1 EA)  
 STA L 56+16.00 RT, BIKE LANE SYMBOL (1 EA)

24 INCH STOP BAR, LOW VOC CHLORINATED RUBBER PAINT AND TEMPORARY 24 INCH STOP BAR, PAINT  
 ESSEX JUNCTION:  
 STA L 55+59.84 RT, NORTH STREET  
 STA L 55+59.84 RT, NORTH STREET

CROSSWALK MARKING, LOW VOC CHLORINATED RUBBER PAINT AND TEMPORARY CROSSWALK MARKING, PAINT  
 ESSEX JUNCTION:  
 STA L 55+25.00 LT/RT  
 STA L 56+12.64 LT, PVT HOLY FAMILY PLACE

6 INCH WHITE LINE, LOW VOC CHLORINATED RUBBER PAINT AND TEMPORARY 6 INCH WHITE LINE, PAINT  
 (ALL LINES WILL INCLUDE EDGE LINE BREAKS AND RADIUS FOR TOWN HIGHWAYS)  
 ESSEX JUNCTION:  
 STA L 56+07.00 - STA L 58+02.72 BIKE LANE LINE RT  
 8 INCH WHITE LINE, LOW VOC CHLORINATED RUBBER PAINT  
 ESSEX JUNCTION:  
 STA L 52+59.00 - STA L 52+71.00 LT, FIRE HYDRANT, NO PARKING

REMOVING SIGNS AS SHOWN - 14  
 ERECTING SALVAGED SIGNS AS SHOWN - 1

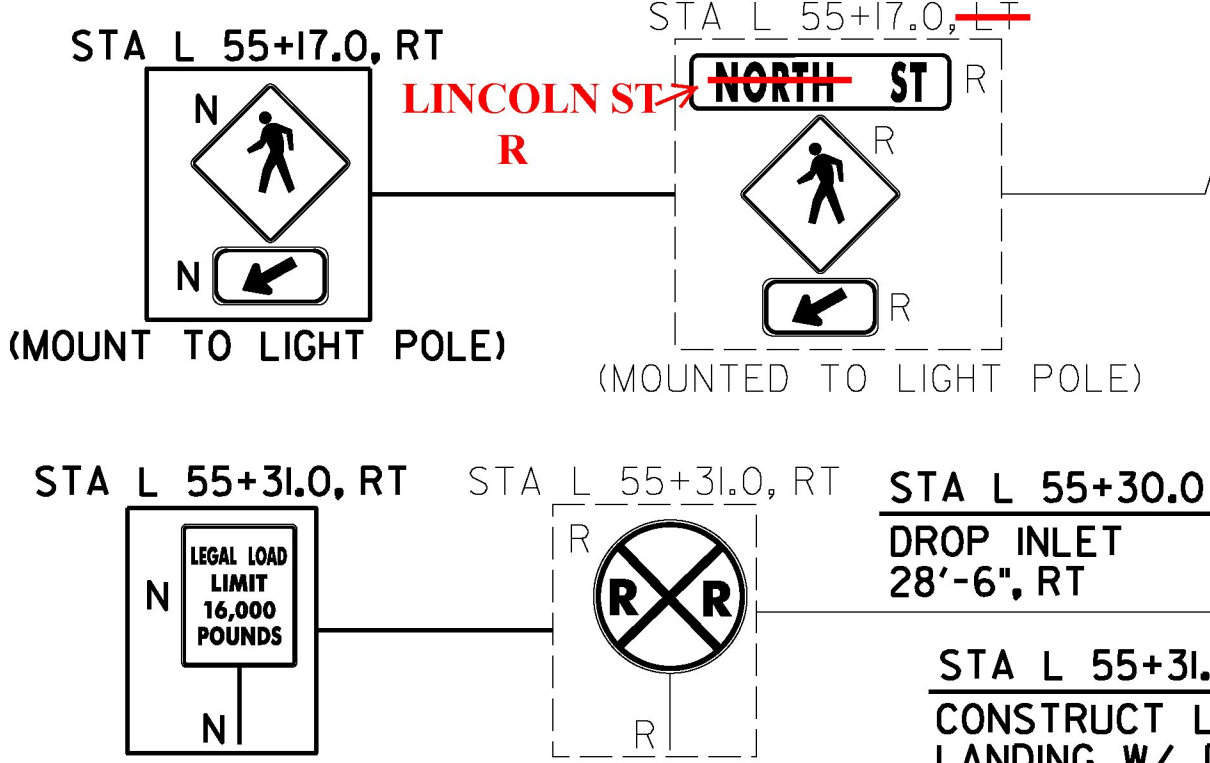


PORTLAND CEMENT CONCRETE SIDEWALK, 5 INCH  
 ESSEX JUNCTION:  
 STA L 55+31.0 RT  
 DETECTABLE WARNING SURFACE  
 ESSEX JUNCTION:  
 STA L 55+31.0 RT

CHANGING ELEVATION OF SEWER MANHOLES  
 ESSEX JUNCTION:  
 STA L 53+93.0 LT L 55+96 RT  
 STA L 53+93.0 LT L 55+30 RT L 57+18 RT  
 STA L 56+18.0 LT L 55+79 LT L 57+19 LT

ADJUST ELEVATION OF VALVE BOX  
 ESSEX JUNCTION:  
 STA L 52+65.0 LT L 55+81 LT  
 STA L 52+75.0 LT L 55+93 LT  
 STA L 54+07.0 LT L 55+93 LT  
 STA L 56+28.0 LT

REHAB. DROP INLETS, CATCH BASINS, OR MANHOLES, CLASS I, II, OR III  
 ESSEX JUNCTION:  
 STA L 53+12.0 RT  
 STA L 54+21.0 LT L 53+80 LT  
 STA L 55+30.0 RT L 56+18 LT  
 STA L 55+75.0 RT  
 STA L 55+79.0 LT  
 STA L 55+96.0 RT  
 STA L 57+18.0 RT  
 STA L 57+19.0 LT



SIGN LEGEND  
 R = REMOVE  
 S = SALVAGE  
 N = NEW  
 RET = RETAIN  
 B-B = BACK TO BACK  
 EXISTING =  
 NEW =  
 R = RETURN TO VILLAGE OF ESSEX JUNCTION

NOT TO SCALE  
**CHA**

NOTES:  
 1. SEE SHEET 10 FOR FIRE HYDRANT PAVEMENT MARKING DETAIL.  
 2. SEE SHEET 8 FOR ASPHALT TRANSITION FOR CONCRETE GRADE CROSSING PANELS DETAIL.  
 3. EXISTING CONCRETE GRADE CROSSING TO REMAIN.

PROJECT NAME: ESSEX JUNCTION  
 PROJECT NUMBER: STP 2956(I)  
 FILE NAME: z14v251bdr.dgn  
 PROJECT LEADER: D.GOZALKOWSKI  
 DESIGNED BY: J. OLSEN  
 PLAN SHEET 13

PLOT DATE: 4/19/2016  
 DRAWN BY: A. KIRBY  
 CHECKED BY: J. SHIELDS  
 SHEET 40 OF 171