

4 INCH WHITE LINE, LOW VOC CHLORINATED RUBBER PAINT AND TEMPORARY 4 INCH WHITE LINE, PAINT  
 (ALL LINES WILL INCLUDE EDGE LINE BREAKS AND RADIUS FOR TOWN HIGHWAYS)  
 ESSEX JUNCTION:  
 STA PA 34+50.00 - STA PA 35+31.00 C/L SOLID LANE LINE  
 STA PA 34+50.00 - STA PA 35+31.00 RT SOLID LANE LINE  
 STA PA 34+50.00 - STA PA 36+00.00 EDGE LINES LT & RT  
 STA L 36+00.00 - STA L 37+00.00 EDGE LINES LT & RT  
~~STA PE 114+86.00 - STA PE 115+11.00 C/L SOLID LANE LINE~~  
~~STA PE 114+86.00 - STA PE 116+16.44 EDGE LINES LT & RT~~  
~~STA MN 116+16.44 - STA MN 117+25.00 EDGE LINES LT & RT~~  
 STA L 36+64.00 - STA L 37+00.00 LT SOLID LANE LINE  
 STA MA 0+00.00 - STA MA 0+85.00 EDGE LINE LT & RT  
 STA MN 117+00.00 - STA MN 117+25.00 LT SOLID LANE LINE

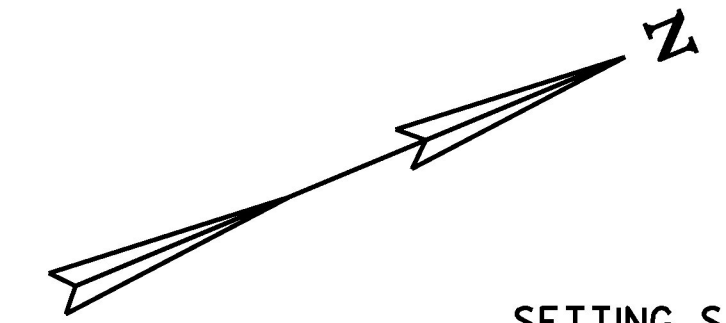
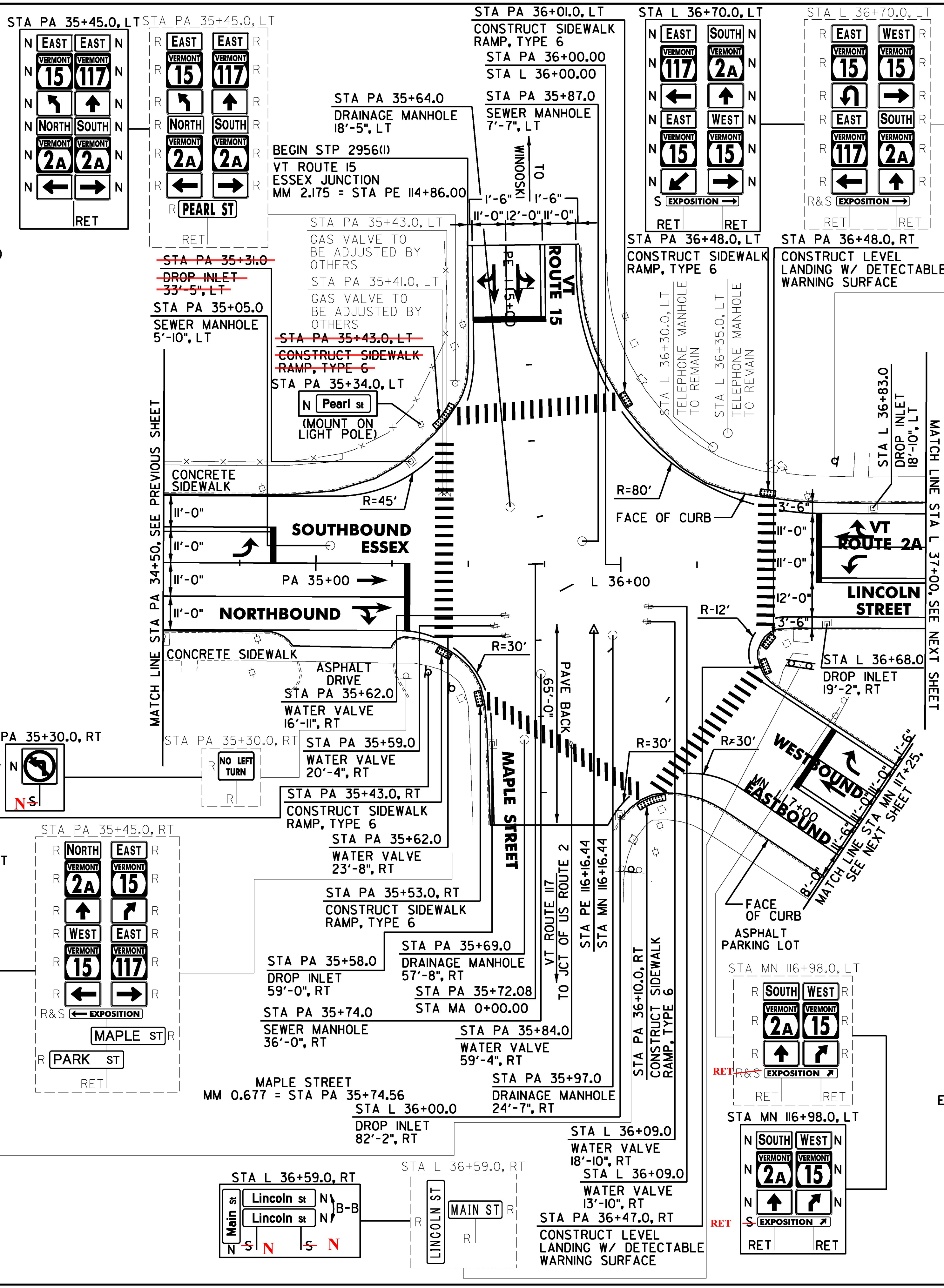
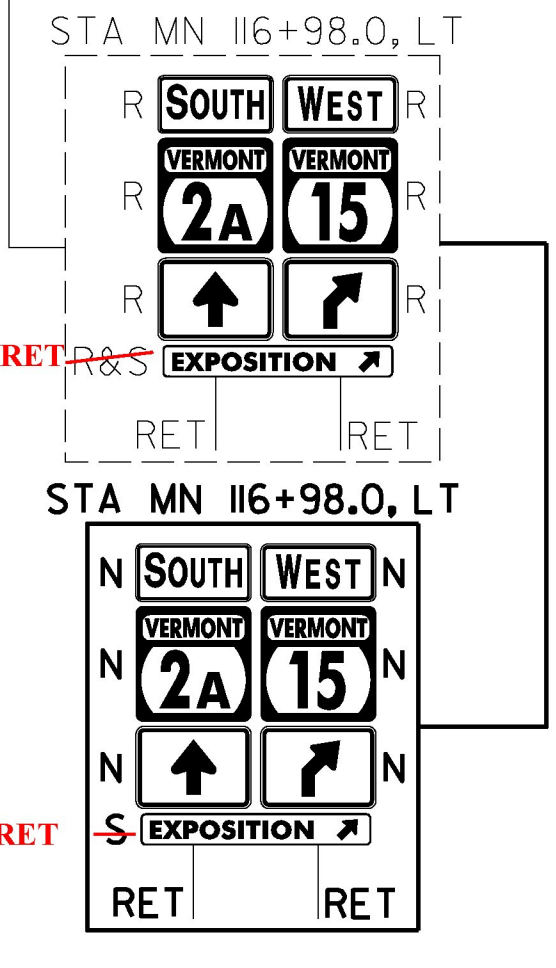
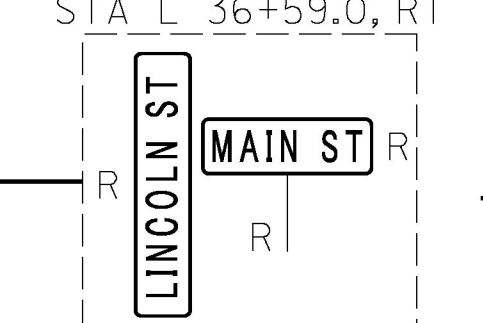
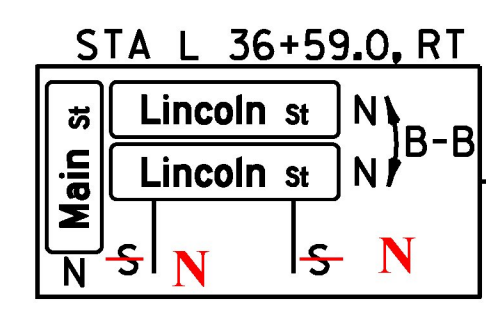
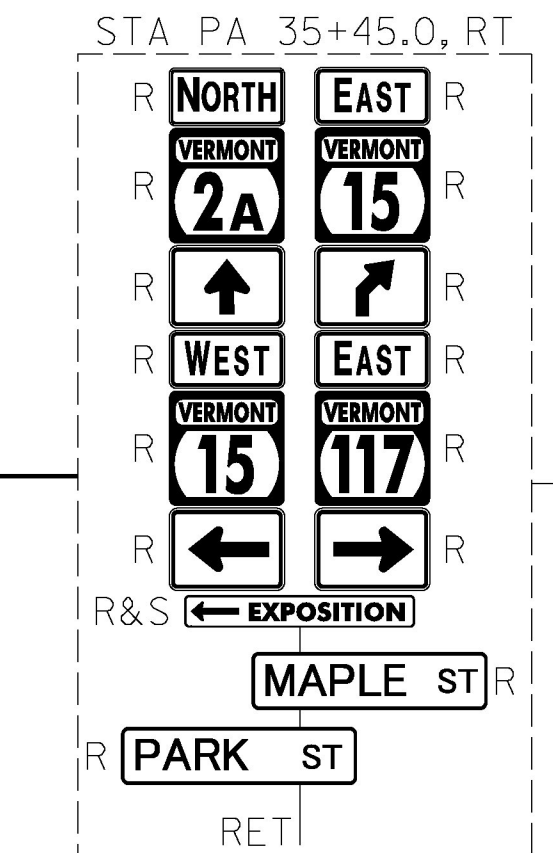
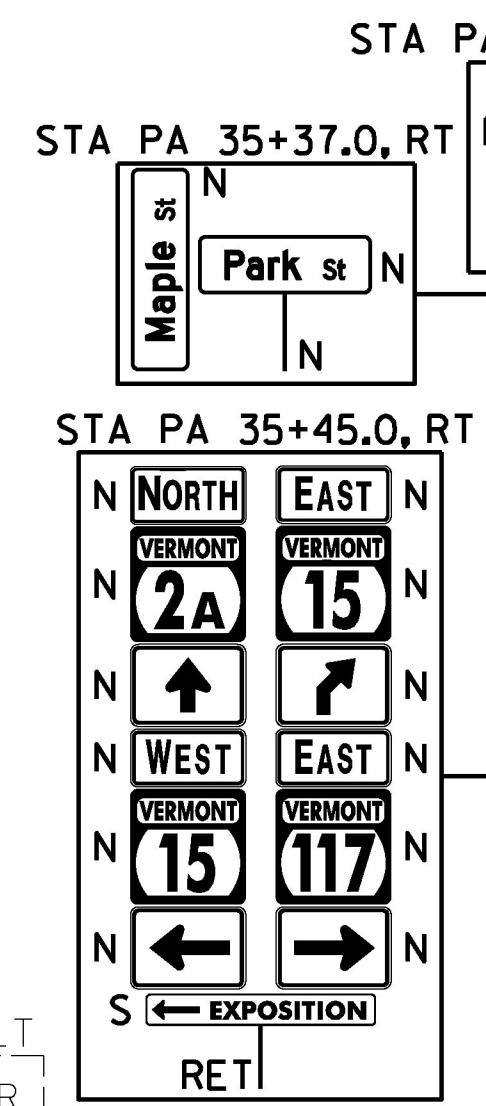
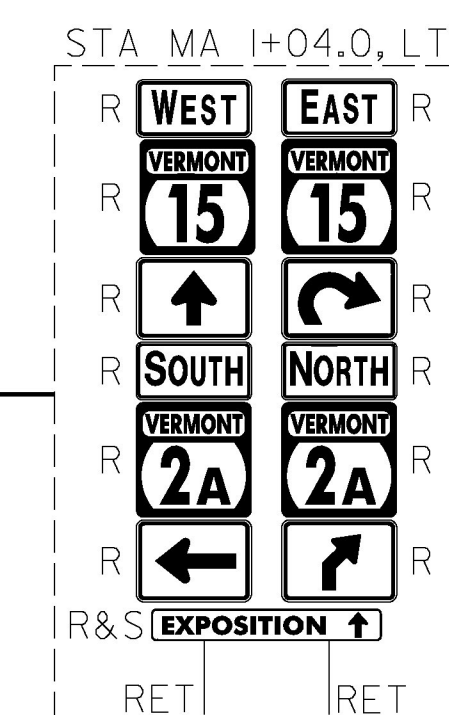
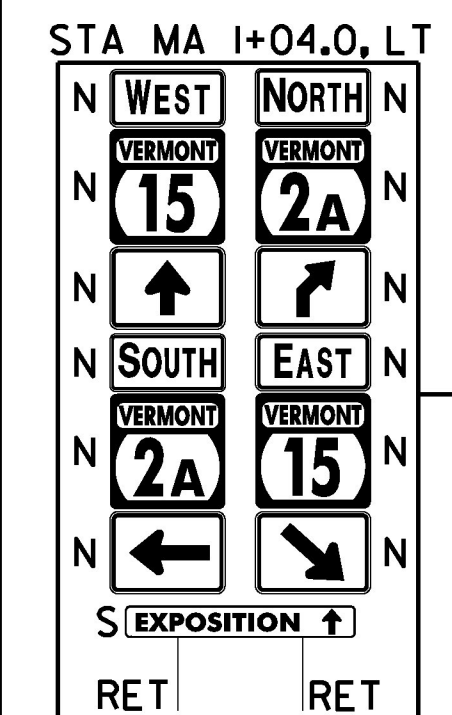
4 INCH YELLOW LINE, LOW VOC CHLORINATED RUBBER PAINT AND TEMPORARY 4 INCH YELLOW LINE, PAINT  
 (ALL LINES WILL INCLUDE C/L LINE BREAKS FOR TOWN HIGHWAYS)  
 S = SOLID, D = DASHED  
 ESSEX JUNCTION:  
 STA PA 34+50.00 - STA PA 34+87.00 DOUBLE SOLID LT  
 STA L 36+64.00 - STA L 37+00.00 DOUBLE SOLID RT  
~~STA PE 114+86.00 - STA PE 115+11.00 DOUBLE SOLID LT~~  
 STA MN 117+00.00 - STA MN 117+25.00 DOUBLE SOLID C/L

CROSSWALK MARKING, LOW VOC CHLORINATED RUBBER PAINT AND TEMPORARY CROSSWALK MARKING, PAINT  
 ESSEX JUNCTION:  
 STA PA 35+43.00 LT/RT  
 STA PA 35+72.00 LT, VT ROUTE 15  
 STA PA 35+82.00 RT, VT ROUTE 117  
 STA L 36+28.00 RT, VT ROUTE 15  
 STA L 36+48.00 LT/RT

24 INCH STOP BAR, LOW VOC CHLORINATED RUBBER PAINT AND TEMPORARY 24 INCH STOP BAR, PAINT  
 ESSEX JUNCTION:  
 STA PA 34+86.00 LT  
 STA PA 35+30.00 RT  
 STA L 36+65.00 LT/RT  
~~STA PE 115+10.00 LT/RT~~ RT 117 STOP Bars  
 STA MN 117+01.00 LT

LETTER OR SYMBOL, LOW VOC CHLORINATED RUBBER PAINT  
 ESSEX (ESSEX JCT):  
 STA PA 34+77.00 LT, ARROW (1 EA)  
 STA PA 35+19.50 RT, ARROW (1 EA)  
 STA PA 35+19.50 RT, ARROWS (2 EA)  
 STA L 36+76.50 C/L, ARROW (1 EA)  
 STA L 36+76.50 LT, ARROWS (2 EA)  
~~STA PE 114+98.50 LT, ARROWS (2 EA)~~  
~~STA PE 114+98.50 RT, ARROWS (2 EA)~~  
 STA MN 117+10.00 LT, ARROW (1 EA)  
 STA MN 117+10.00 LT, ARROW (1 EA)

TEMPORARY LETTER OR SYMBOL, PAINT  
 ESSEX (ESSEX JCT):  
 STA PA 34+77.00 LT, ARROW (2 EA)  
 STA PA 35+19.50 RT, ARROW (2 EA)  
 STA PA 35+19.50 RT, ARROWS (4 EA)  
 STA L 36+76.50 C/L, ARROW (2 EA)  
 STA L 36+76.50 LT, ARROWS (4 EA)  
~~STA PE 114+98.50 LT, ARROWS (4 EA)~~  
~~STA PE 114+98.50 RT, ARROWS (4 EA)~~  
 STA MN 117+10.00 LT, ARROW (2 EA)  
 STA MN 117+10.00 LT, ARROW (2 EA)



- SETTING SALVAGED POSTS AS SHOWN - 3
- ERECTING SALVAGED SIGNS AS SHOWN - 4
- REMOVING SIGNS AS SHOWN - 64
- PORTLAND CEMENT CONCRETE SIDEWALK, 5 INCH ESSEX JUNCTION:  
~~STA PA 35+43.0 LT~~  
~~STA PA 35+43.0 RT~~  
~~STA PA 35+53.0 RT~~  
~~STA L 36+01.0 LT~~  
~~STA L 36+10.0 RT~~  
~~STA L 36+47.0 RT~~  
~~STA L 36+48.0 LT~~  
~~STA L 36+48.0 RT~~
- DETECTABLE WARNING SURFACE ESSEX JUNCTION:  
~~STA PA 35+43.0 LT~~  
~~STA PA 35+43.0 RT~~  
~~STA PA 35+53.0 RT~~  
~~STA L 36+01.0 LT~~  
~~STA L 36+10.0 RT~~  
~~STA L 36+47.0 RT~~  
~~STA L 36+48.0 LT~~  
~~STA L 36+48.0 RT~~
- REMOVAL OF EXISTING CURB ESSEX JUNCTION:  
~~STA PA 35+43.0 LT~~  
~~STA PA 35+43.0 RT~~  
~~STA PA 35+53.0 RT~~  
~~STA L 36+01.0 LT~~  
~~STA L 36+10.0 RT~~  
~~STA L 36+47.0 RT~~  
~~STA L 36+48.0 LT~~  
~~STA L 36+48.0 RT~~
- CAST-IN-PLACE CONCRETE CURB, TYPE B ESSEX JUNCTION:  
~~STA PA 35+43.0 LT~~  
~~STA PA 35+43.0 RT~~  
~~STA PA 35+53.0 RT~~  
~~STA L 36+01.0 LT~~  
~~STA L 36+10.0 RT~~  
~~STA L 36+47.0 RT~~  
~~STA L 36+48.0 LT~~  
~~STA L 36+48.0 RT~~
- REHAB. DROP INLETS, CATCH BASINS, OR MANHOLES, CLASS I, II, OR III ESSEX JUNCTION:  
~~STA PA 35+31.0 LT~~  
~~STA PA 35+58.0 RT~~  
~~STA PA 35+64.0 LT~~  
~~STA PA 35+69.0 RT~~  
~~STA PA 35+97.0 RT~~  
~~STA L 36+00.0 RT~~  
~~STA L 36+68.0 RT~~  
~~STA L 36+83.0 RT~~
- ADJUST ELEVATION OF VALVE BOX ESSEX JUNCTION:  
~~STA PA 35+59.0 RT~~  
~~STA PA 35+62.0 RT~~  
~~STA PA 35+62.0 RT~~  
~~STA PA 35+84.0 RT~~  
~~STA L 36+09.0 RT~~  
~~STA L 36+09.0 RT~~
- CHANGING ELEVATION OF SEWER MANHOLES ESSEX JUNCTION:  
~~STA PA 35+05.0 LT~~ PA 35+58 RT  
~~STA PA 35+74.0 RT~~ PA 35+69 RT  
~~STA PA 35+87.0 LT~~ PA 36+00 RT  
~~STA PA 35+87.0 LT~~ L 36+83 LT

**SIGN LEGEND**  
 R = REMOVE  
 S = SALVAGE  
 N = NEW  
 RET = RETAIN  
 B-B = BACK TO BACK  
 EXISTING =  
 NEW =  
 R = RETURN TO VILLAGE  
 O = OFF ESSEX JUNCTION



PROJECT NAME: ESSEX JUNCTION  
 PROJECT NUMBER: STP 2956(I)  
 FILE NAME: z14v251bdr.dgn  
 PROJECT LEADER: D.GOZALKOWSKI  
 DESIGNED BY: J. OLSEN  
 PLAN SHEET 8  
 PLOT DATE: 4/19/2016  
 DRAWN BY: A. KIRBY  
 CHECKED BY: J. SHIELDS  
 SHEET 35 OF 171