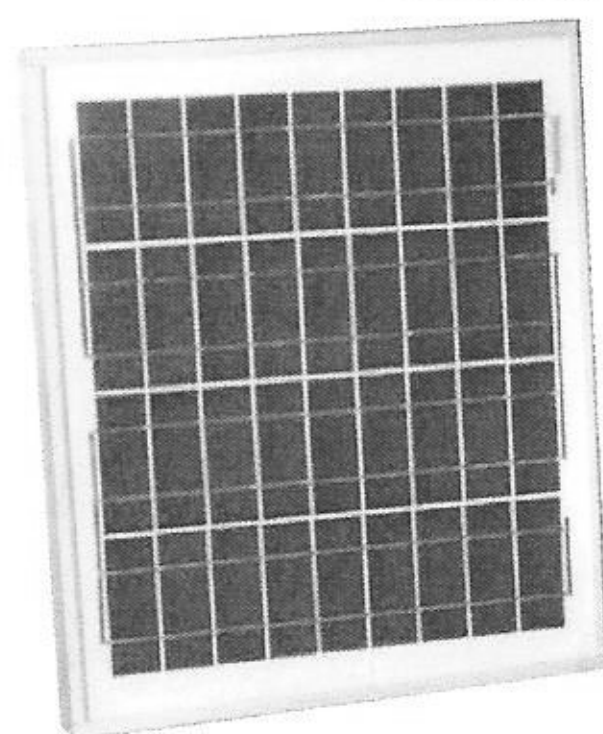


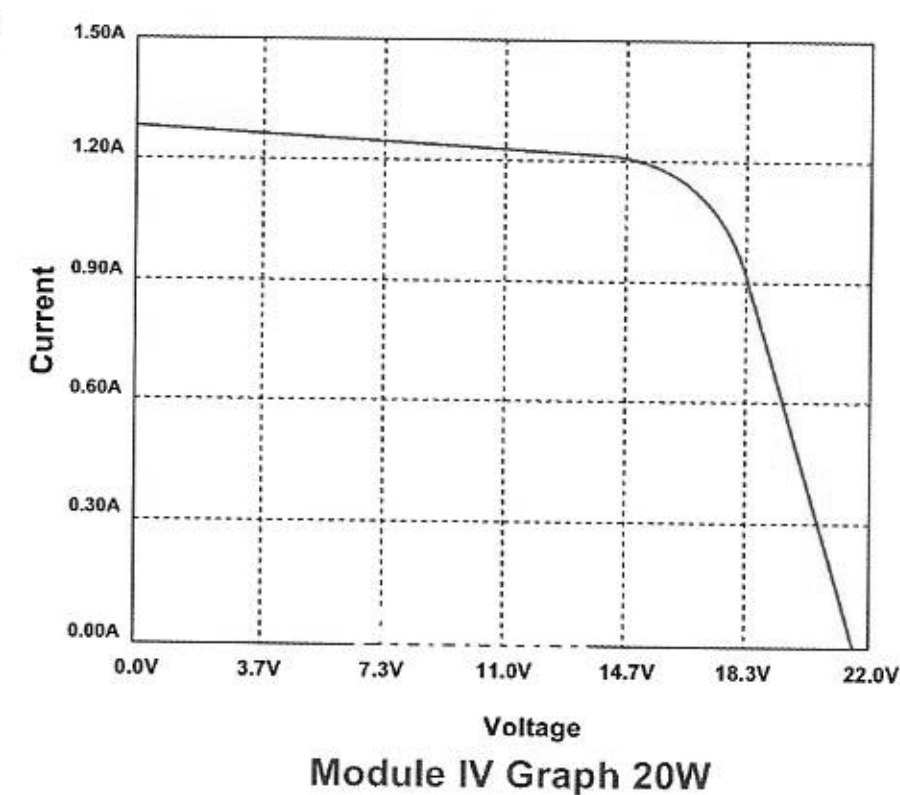
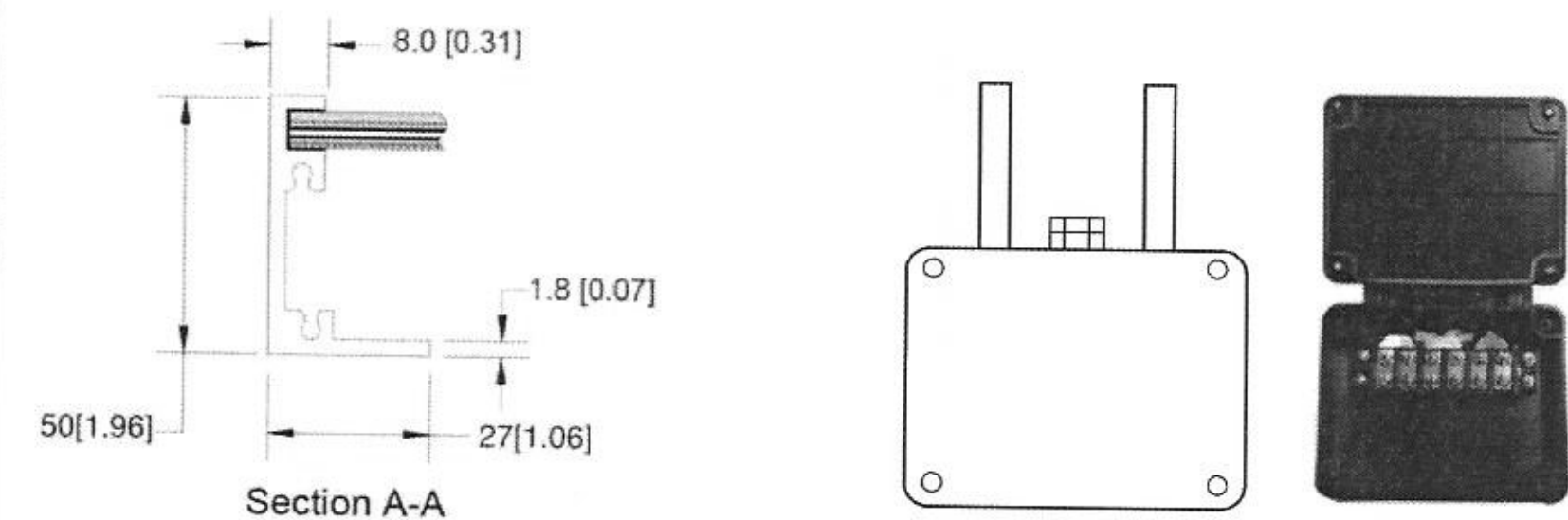
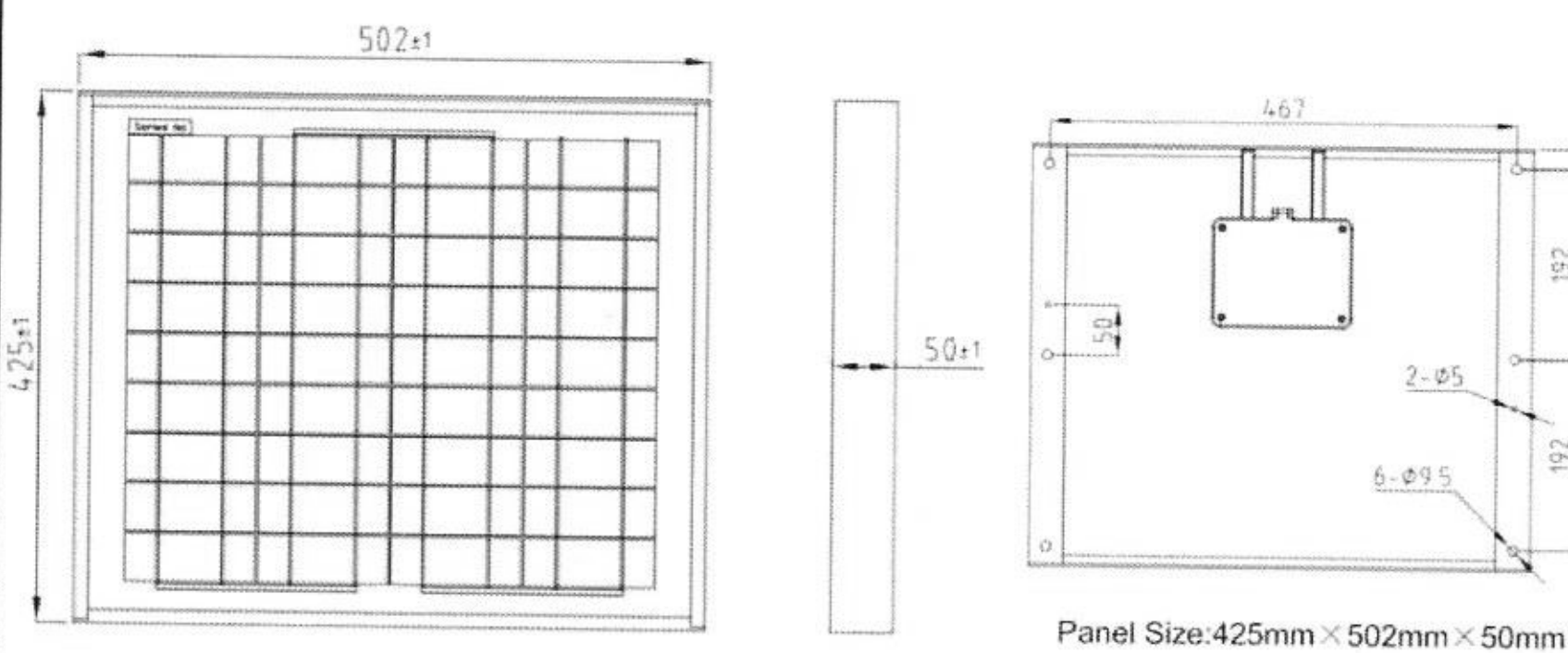
| Electrical Characteristics | IS-20J, 20W 12V |
|--|-------------------|
| Maximum power (P _{max}) | 20 W |
| Voltage at P _{max} (V _{mp}) | 17.2V |
| Current at P _{max} (I _{mp}) | 1.16A |
| Open-circuit voltage (V _{oc}) | 21.6V |
| Short-circuit current (I _{sc}) | 1.31A |
| Temperature coefficient of V _{oc} | -80±10mV/°C |
| Temperature coefficient of I _{sc} | (0.065±0.015)%/°C |
| Temperature coefficient of power | -(0.5±0.05)mV/°C |
| NOCT (Air 20 °C; Sun 0.8kW/m wind 1m/s) | 47±2 °C |
| Operating temperature | -40 °C to 85 °C |
| Maximum system voltage | 1000V DC |
| Power tolerance | ±3% |

*STC: Irradiance 1000W/m, AM1.5 spectrum, module temperature 25 °C



Features

- Nominal 12V DC for standard output.
 - Outstanding low-light performance.
 - Heavy-duty anodized frames.
 - High transparent low-iron, tempered glass.
 - Cells are laminated with TPT and EVA ensuring longer life and maximum performance.
 - Rugged design to withstand high wind pressure, hail and snow load.
 - Aesthetic appearance.
- 25 years limited power output warranty.
Custom design capabilities allow us to meet unique customer demands



| Specifications | IS-20J, 20W 12V |
|------------------------------|--|
| Cells | Multicrystalline silicon solar cell |
| No. of cells and connections | 36(2X18) |
| Module Dimension | 576mm[22.69in.]x356mm[14.02in.]x23mm[0.91in.] |
| Weight | 2.5kg[5.5lbs] |
| Packing information (carton) | 1245mm[49.2in.]x570mm[22.4in.]x105mm[4.13in.]/(2pcs/ctn) |

Reseller