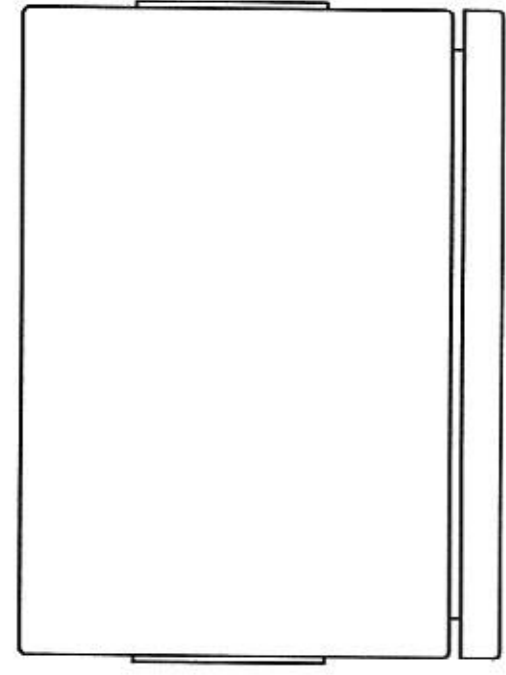
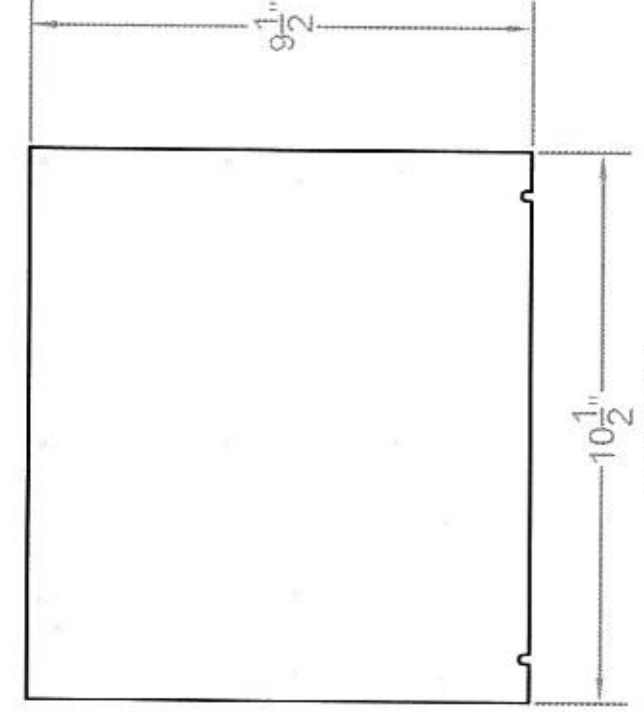


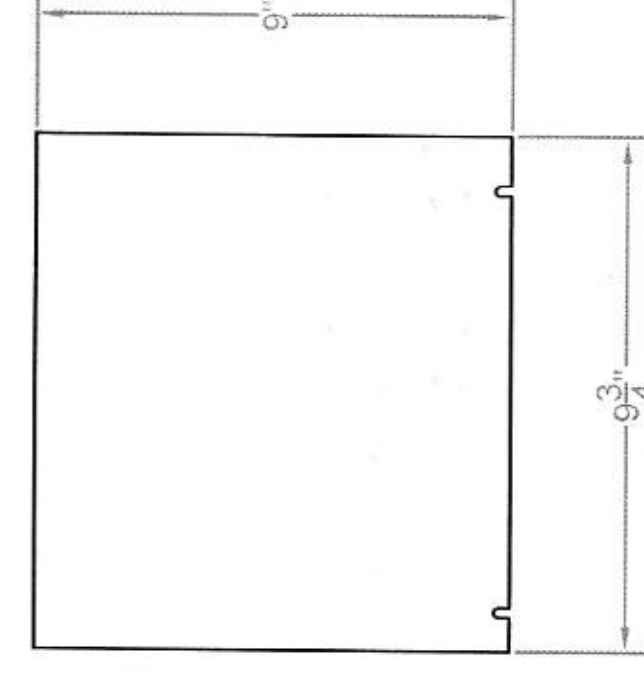
DATE	DESCRIPTION



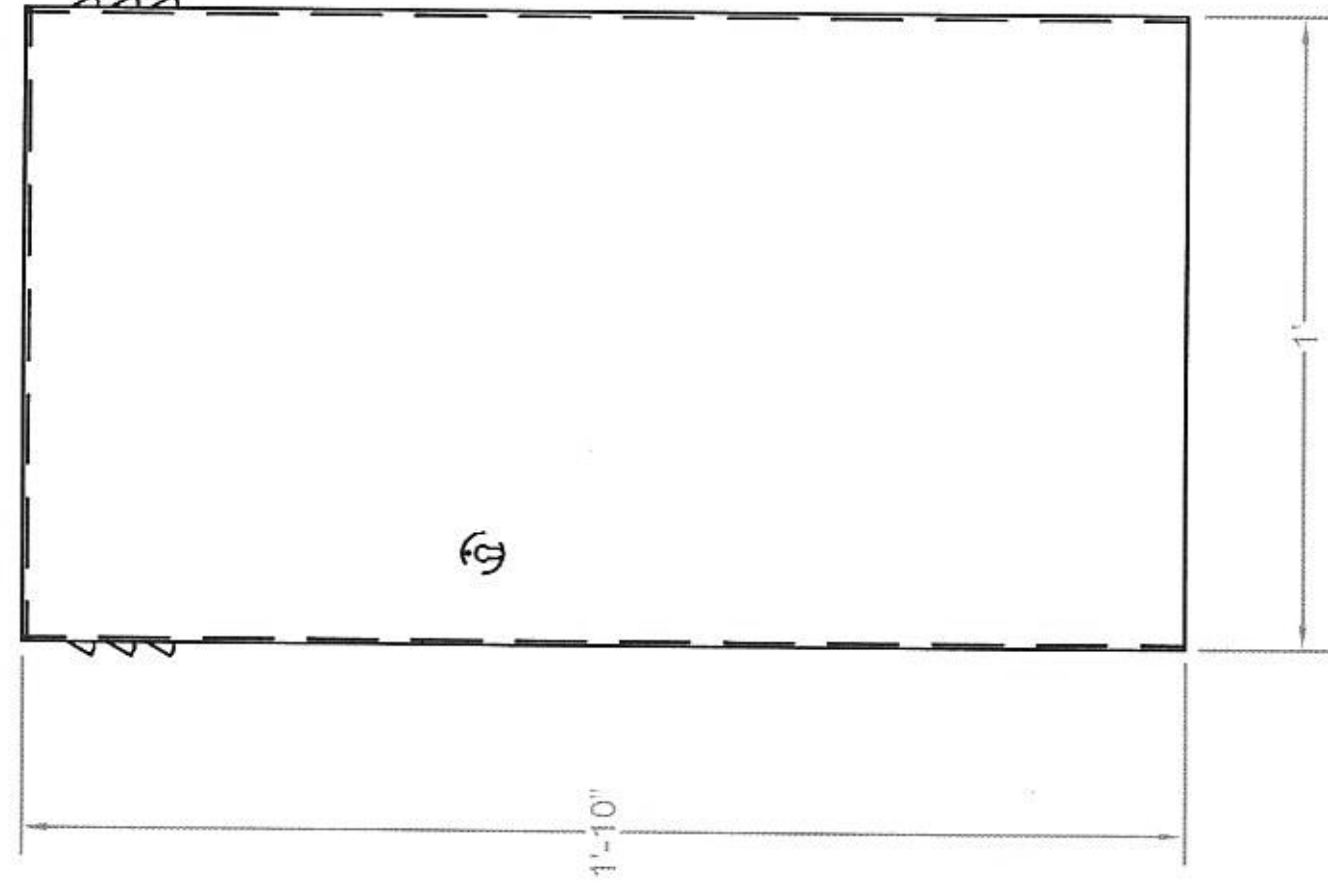
TOP VIEW



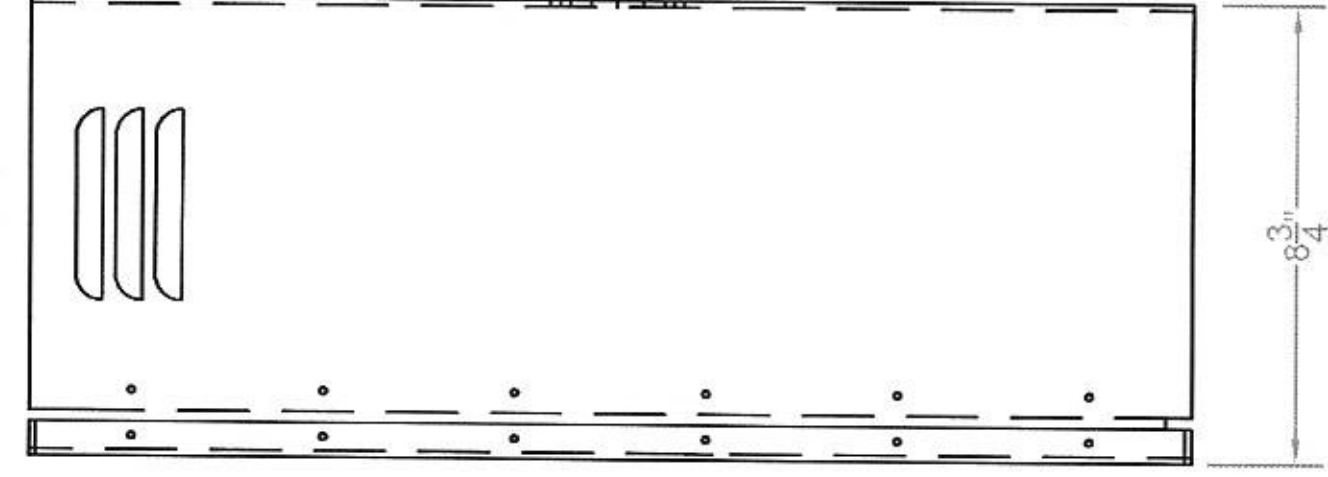
BACK PANEL



DOOR PANEL



FRONT VIEW



RIGHT-SIDE VIEW

This should be black for consistency

FEATURES:

- 1) CONSTRUCTED TO NEMA 3R STANDARDS
- 2) SINGLE-COMPARTMENT DESIGN, OVERALL DIMENSIONS 22"H x 12"W x 8-3/4"D
- 3) CABINET DOOR WITH CONTINUOUS PIANO HINGE RIVETED TO DOOR & CABINET
- 4) A730S PIANO HINGE WITH 304 STAINLESS STEEL HINGE PIN
- 5) CONTINUOUS NEOPRENE GASKET SEAL AROUND DOOR
- 6) SCREEN COVERED VENTILATION LOUVERS ON EACH SIDE
- 7) SCREEN COVERED DRAIN HOLES IN BOTTOM OF CABINET
- 8) STANDARD POLICE LOCK
- 9) BACK AND DOOR PANELS, STAND-OFF MOUNT
- 10) SINGLE CAPTIVE THUMB-SCREW PANEL RETENTION
- 11) SINGLE CAPTIVE THUMB-SCREW PANEL RETENTION
- 12) BANDING MOUNT HARDWARE AVAILABLE UPON REQUEST

		ELECTROTECHNICS CORPORATION 1310 COMMERCE - MARSHALL TEXAS - 75670	
MATERIAL	0.125 ALUMINUM	DRAWN BY / SCALE	CLS NTS
FINISH	BRUSHED	APPROVED BY / DOCUMENT NUMBER	JEP 830281-SL55
PART NUMBER	830281	DATE	01/25/2012
			SHEET #
			1