

**DURABLE 4 INCH WHITE LINE, TYPE A TAPE AND TEMPORARY 4 INCH WHITE LINE, PAINT**

(ALL LINES WILL INCLUDE EDGE LINE BREAKS AND RADIUS FOR TOWN HIGHWAYS)

WINDSOR:  
 STA W 254+00.00 - STA W 254+30.00 EDGE LINE LT & RT  
 STA W 254+38.00 - STA W 259+00.00 EDGE LINE LT & RT  
 STA W 255+76.32 EDGE LINE RT, TH-45

**DURABLE 4 INCH YELLOW LINE, TYPE A TAPE AND TEMPORARY 4 INCH YELLOW LINE, PAINT**

(ALL LINES WILL INCLUDE C/L BREAKS FOR TOWN HIGHWAYS)

S=SOLID D=DASHED  
 WINDSOR:  
 STA W 254+00.00 - STA W 259+00.00 LT C RT  
 S S

**DURABLE 8 INCH WHITE LINE, TYPE A TAPE**

WINDSOR:  
 STA W 254+10.00 - STA W 254+30.00 LT & RT, NO PARKING  
 STA W 254+38.00 - STA W 254+58.00 LT & RT, NO PARKING  
 STA W 256+90.00 - STA W 257+02.00 RT, FIRE HYDRANT, NO PARKING

**DURABLE LETTER OR SYMBOL, TYPE D TAPE**

WINDSOR:  
 STA W 256+89.00 RT, "S,I,G,N,A,L" (6 EA)  
 STA W 257+21.00 RT, "A,H,E,A,D" (5 EA)

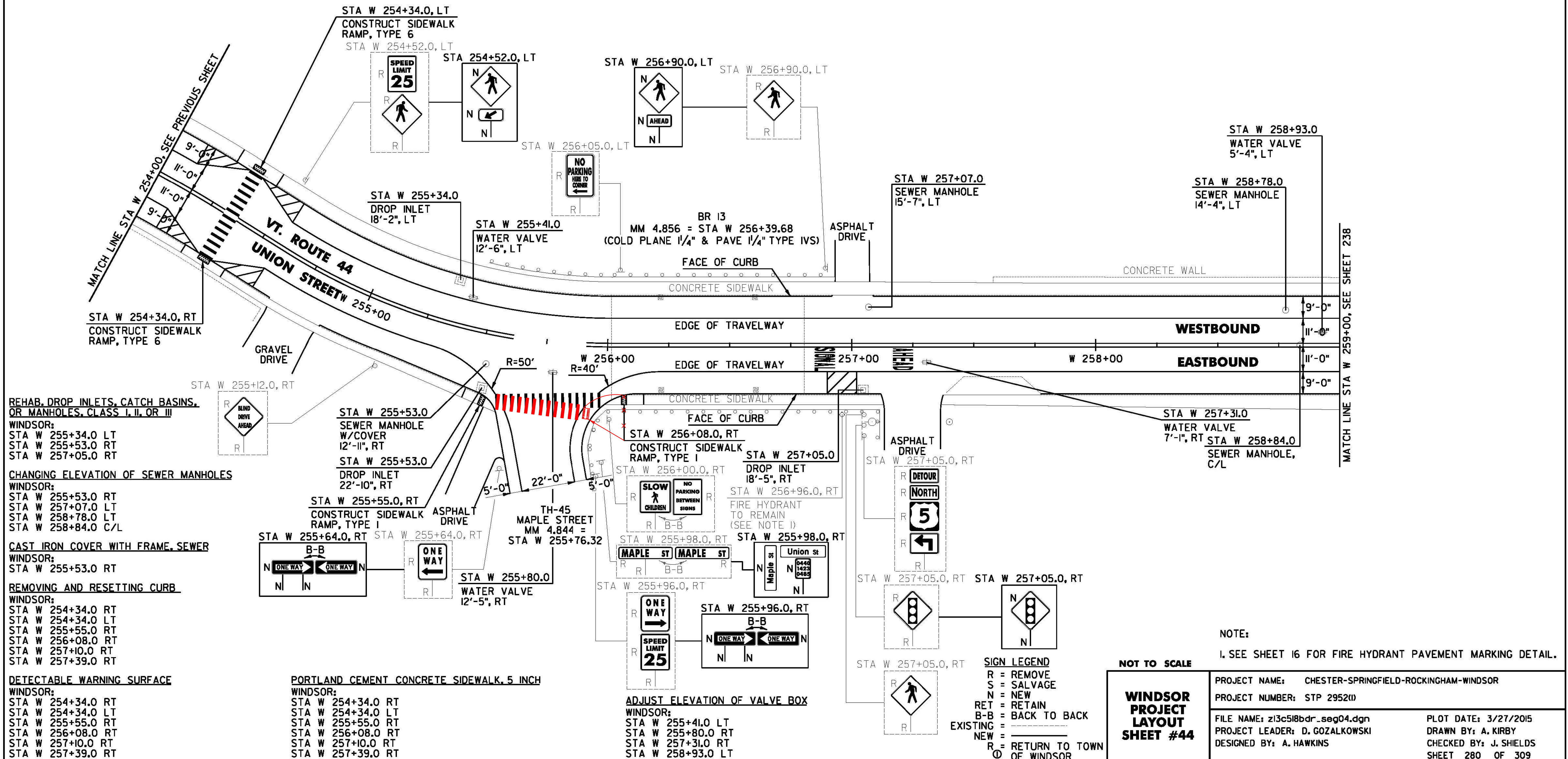
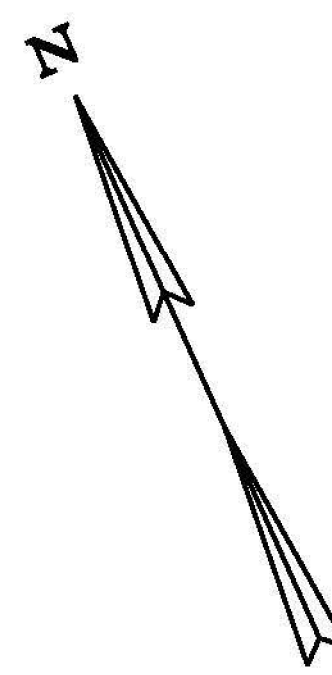
**REMOVING SIGNS AS SHOWN - 18**

**TEMPORARY LETTER OR SYMBOL, PAINT**

WINDSOR:  
 STA W 256+89.00 RT, "S,I,G,N,A,L" (12 EA)  
 STA W 257+21.00 RT, "A,H,E,A,D" (10 EA)

**DURABLE CROSSWALK MARKING, TYPE A TAPE AND TEMPORARY CROSSWALK MARKING, PAINT**

WINDSOR:  
 STA W 254+34.00 LT/RT  
 STA W 255+76.32 RT, TH-45



**REHAB. DROP INLETS, CATCH BASINS, OR MANHOLES, CLASS I, II, OR III**

WINDSOR:  
 STA W 255+34.0 LT  
 STA W 255+53.0 RT  
 STA W 257+05.0 RT

**CHANGING ELEVATION OF SEWER MANHOLES**

WINDSOR:  
 STA W 255+53.0 RT  
 STA W 257+07.0 LT  
 STA W 258+78.0 LT  
 STA W 258+84.0 C/L

**CAST IRON COVER WITH FRAME, SEWER**

WINDSOR:  
 STA W 255+53.0 RT

**REMOVING AND RESETTNG CURB**

WINDSOR:  
 STA W 254+34.0 RT  
 STA W 254+34.0 LT  
 STA W 255+55.0 RT  
 STA W 256+08.0 RT  
 STA W 257+10.0 RT  
 STA W 257+39.0 RT

**DETECTABLE WARNING SURFACE**

WINDSOR:  
 STA W 254+34.0 RT  
 STA W 254+34.0 LT  
 STA W 255+55.0 RT  
 STA W 256+08.0 RT  
 STA W 257+10.0 RT  
 STA W 257+39.0 RT

**PORTLAND CEMENT CONCRETE SIDEWALK, 5 INCH**

WINDSOR:  
 STA W 254+34.0 RT  
 STA W 254+34.0 LT  
 STA W 255+55.0 RT  
 STA W 256+08.0 RT  
 STA W 257+10.0 RT  
 STA W 257+39.0 RT

**ADJUST ELEVATION OF VALVE BOX**

WINDSOR:  
 STA W 255+41.0 LT  
 STA W 255+80.0 RT  
 STA W 257+31.0 RT  
 STA W 258+93.0 LT

NOTE:  
 1. SEE SHEET 16 FOR FIRE HYDRANT PAVEMENT MARKING DETAIL.

NOT TO SCALE

<b>WINDSOR PROJECT LAYOUT SHEET #44</b>	PROJECT NAME: CHESTER-SPRINGFIELD-ROCKINGHAM-WINDSOR
	PROJECT NUMBER: STP 2952(1)
	FILE NAME: z13c518bdr_seg04.dgn
	PLOT DATE: 3/27/2015
	DRAWN BY: A. KIRBY
	CHECKED BY: J. SHIELDS
	SHEET 280 OF 309

**SIGN LEGEND**  
 R = REMOVE  
 S = SALVAGE  
 N = NEW  
 RET = RETAIN  
 B-B = BACK TO BACK  
 EXISTING = \_\_\_\_\_  
 NEW = \_\_\_\_\_  
 R = RETURN TO TOWN OF WINDSOR