

DURABLE 4 INCH WHITE LINE, TYPE A TAPE AND TEMPORARY 4 INCH WHITE LINE, PAINT  
 (ALL LINES WILL INCLUDE EDGE LINE BREAKS AND RADIUS FOR TOWN HIGHWAYS)  
 WINDSOR:  
 STA W 129+50.00 - STA W 134+00.00 EDGE LINE LT & RT  
 STA W 131+94.72 EDGE LINES LT, TH-8

DURABLE 4 INCH YELLOW LINE, TYPE A TAPE AND TEMPORARY 4 INCH YELLOW LINE, PAINT  
 (ALL LINES WILL INCLUDE C/L BREAKS FOR TOWN HIGHWAYS)  
 S=SOLID D=DASHED  
 WINDSOR:  
 STA W 129+50.00 - STA W 134+00.00 LT & RT  
 STA W 131+94.72 DOUBLE SOLID LT, TH-8

DURABLE 24 INCH STOP BAR, TYPE A TAPE AND TEMPORARY 24 INCH STOP BAR, PAINT

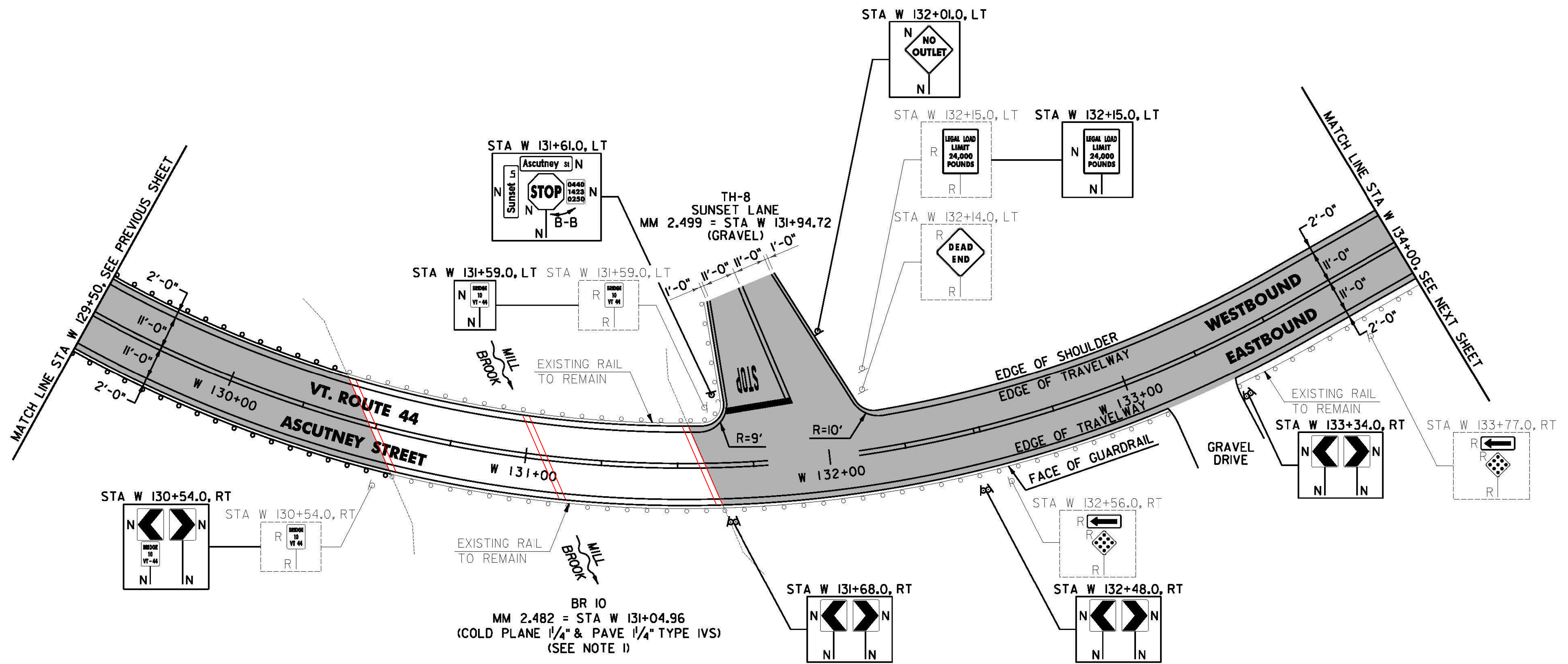
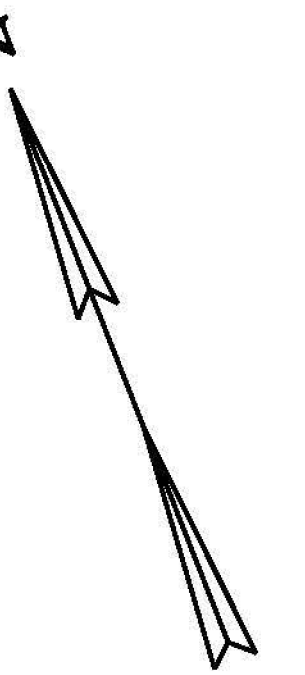
WINDSOR:  
 STA W 131+94.72 LT, TH-8

DURABLE LETTER OR SYMBOL, TYPE D TAPE  
 WINDSOR:  
 STA W 131+94.72 LT, TH-8 "S,T,O,P (4 EA)

TEMPORARY LETTER OR SYMBOL, PAINT  
 WINDSOR:  
 STA W 131+94.72 LT, TH-8 "S,T,O,P (8 EA)

BRIDGE EXPANSION JOINT, ASPHALTIC PLUG  
 BR 10 (3 JOINTS) 103 LF

REMOVING SIGNS  
 AS SHOWN - 8



**HD STEEL BEAM GUARDRAIL, GALVANIZED**

WINDSOR:  
 STA W 130+10.0 - STA W 130+35.0 LT  
 STA W 130+34.0 - STA W 130+59.0 RT

**REMOVAL AND DISPOSAL OF GUARDRAIL**

WINDSOR:  
 STA W 129+50.0 - STA W 130+35.0 LT  
 STA W 129+50.0 - STA W 130+59.0 RT

**STEEL BEAM GUARDRAIL, GALVANIZED**

WINDSOR:  
 STA W 129+50.0 - STA W 130+10.0 LT  
 STA W 129+50.0 - STA W 130+34.0 RT

**LEGEND**

OVERLAY AREA

**SIGN LEGEND**

R = REMOVE  
 S = SALVAGE  
 N = NEW  
 RET = RETAIN  
 B-B = BACK TO BACK  
 EXISTING =   
 NEW =   
 R = RETURN TO TOWN OF WINDSOR

**NOTE:**

I. SEE SHEET 308 FOR BR 10 DETAILS.

**NOT TO SCALE**

**WINDSOR PROJECT LAYOUT SHEET #19**

PROJECT NAME: CHESTER-SPRINGFIELD-ROCKINGHAM-WINDSOR

PROJECT NUMBER: STP 2952(1)

FILE NAME: z13c518bdr\_seg04.dgn

PROJECT LEADER: D. GOZALKOWSKI

DESIGNED BY: A. HAWKINS

PLOT DATE: 3/27/2015

DRAWN BY: A. KIRBY

CHECKED BY: J. SHIELDS

SHEET 255 OF 309