

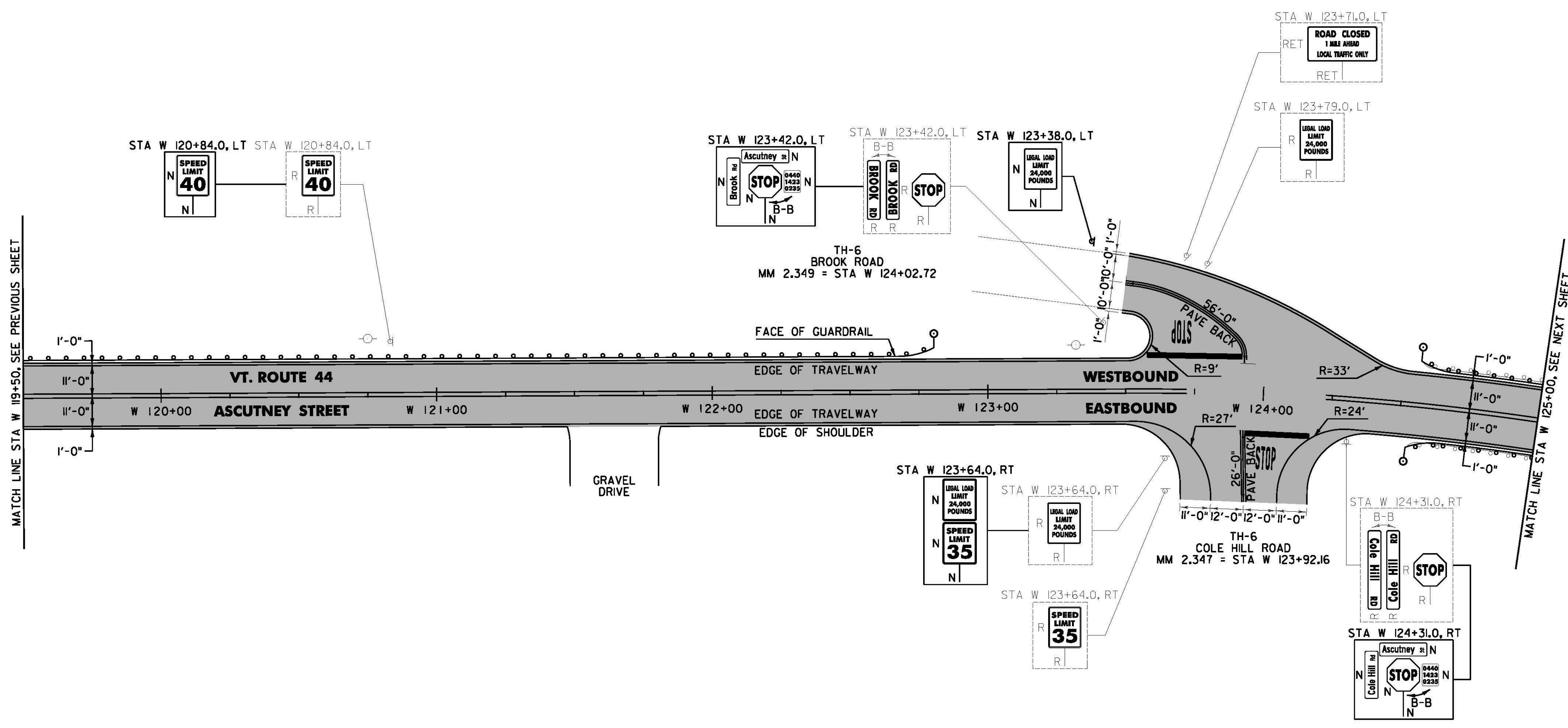
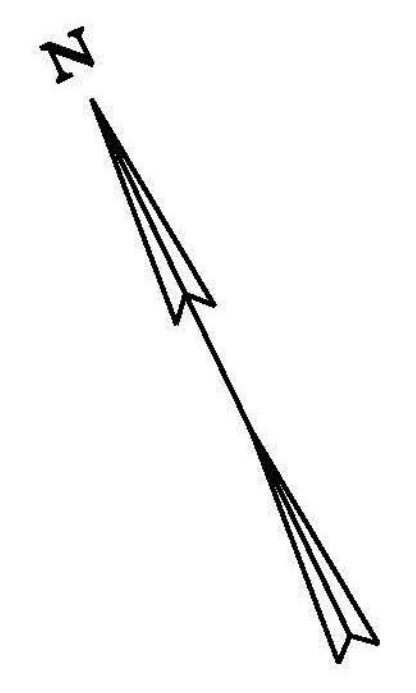
DURABLE 4 INCH WHITE LINE, TYPE A TAPE AND TEMPORARY 4 INCH WHITE LINE, PAINT
 (ALL LINES WILL INCLUDE EDGE LINE BREAKS AND RADIUS FOR TOWN HIGHWAYS)
 WINDSOR:
 STA W 119+50.00 - STA W 125+00.00 EDGE LINE LT & RT
 STA W 123+92.16 EDGE LINES RT, TH-6
 STA W 124+02.72 EDGE LINES LT, TH-6

DURABLE 4 INCH YELLOW LINE, TYPE A TAPE AND TEMPORARY 4 INCH YELLOW LINE, PAINT
 (ALL LINES WILL INCLUDE C/L BREAKS FOR TOWN HIGHWAYS)
 S=SOLID D=DASHED
 WINDSOR:
 STA W 119+50.00 - STA W 125+00.00 S - S
 STA W 123+92.16 DOUBLE SOLID RT, TH-6
 STA W 124+02.72 DOUBLE SOLID LT, TH-6

DURABLE LETTER OR SYMBOL, TYPE D TAPE
 WINDSOR:
 STA W 123+92.16 RT, TH-6 "S,T,O,P (4 EA)
 STA W 124+02.72 LT, TH-6 "S,T,O,P (4 EA)
TEMPORARY LETTER OR SYMBOL, PAINT
 WINDSOR:
 STA W 123+92.16 RT, TH-6 "S,T,O,P (8 EA)
 STA W 124+02.72 LT, TH-6 "S,T,O,P (8 EA)

DURABLE 24 INCH STOP BAR, TYPE A TAPE AND TEMPORARY 24 INCH STOP BAR, PAINT
 WINDSOR:
 STA W 123+92.16 RT, TH-6
 STA W 124+02.72 LT, TH-6

REMOVING SIGNS AS SHOWN - 10



MATCH LINE STA W 119+50, SEE PREVIOUS SHEET

MATCH LINE STA W 125+00, SEE NEXT SHEET

STEEL BEAM GUARDRAIL, GALVANIZED
 WINDSOR:
 STA W 124+50.5 - STA W 125+00.0 RT
 STA W 124+57.0 - STA W 125+00.0 LT

STEEL BEAM GUARDRAIL, GALVANIZED W/8 FEET POSTS
 WINDSOR:
 STA W 119+50.0 - STA W 122+80.5 LT

ANCHOR FOR STEEL BEAM RAIL
 WINDSOR:
 STA W 122+74.0 LT
 STA W 124+57.0 RT
 STA W 124+63.5 LT

REMOVAL AND DISPOSAL OF GUARDRAIL
 WINDSOR:
 STA W 119+50.0 - STA W 122+73.0 LT
 STA W 124+58.0 - STA W 125+00.0 RT
 STA W 124+60.0 - STA W 125+00.0 LT

DELINEATOR WITH STEEL POST
 WINDSOR:
 STA W 122+80.5 LT
 STA W 124+50.5 RT
 STA W 124+57.0 LT

LEGEND
 [Grey Box] OVERLAY AREA

SIGN LEGEND
 R = REMOVE
 S = SALVAGE
 N = NEW
 RET = RETAIN
 B-B = BACK TO BACK
 EXISTING = [Dashed Line]
 NEW = [Solid Line]
 R = RETURN TO TOWN OF WINDSOR

NOT TO SCALE
WINDSOR PROJECT LAYOUT SHEET #17

PROJECT NAME: CHESTER-SPRINGFIELD-ROCKINGHAM-WINDSOR	PLOT DATE: 3/27/2015
PROJECT NUMBER: STP 295210	DRAWN BY: A. KIRBY
FILE NAME: z13c518bdr_seg04.dgn	CHECKED BY: J. SHIELDS
PROJECT LEADER: D. GOZALKOWSKI	SHEET 253 OF 309
DESIGNED BY: A. HAWKINS	