

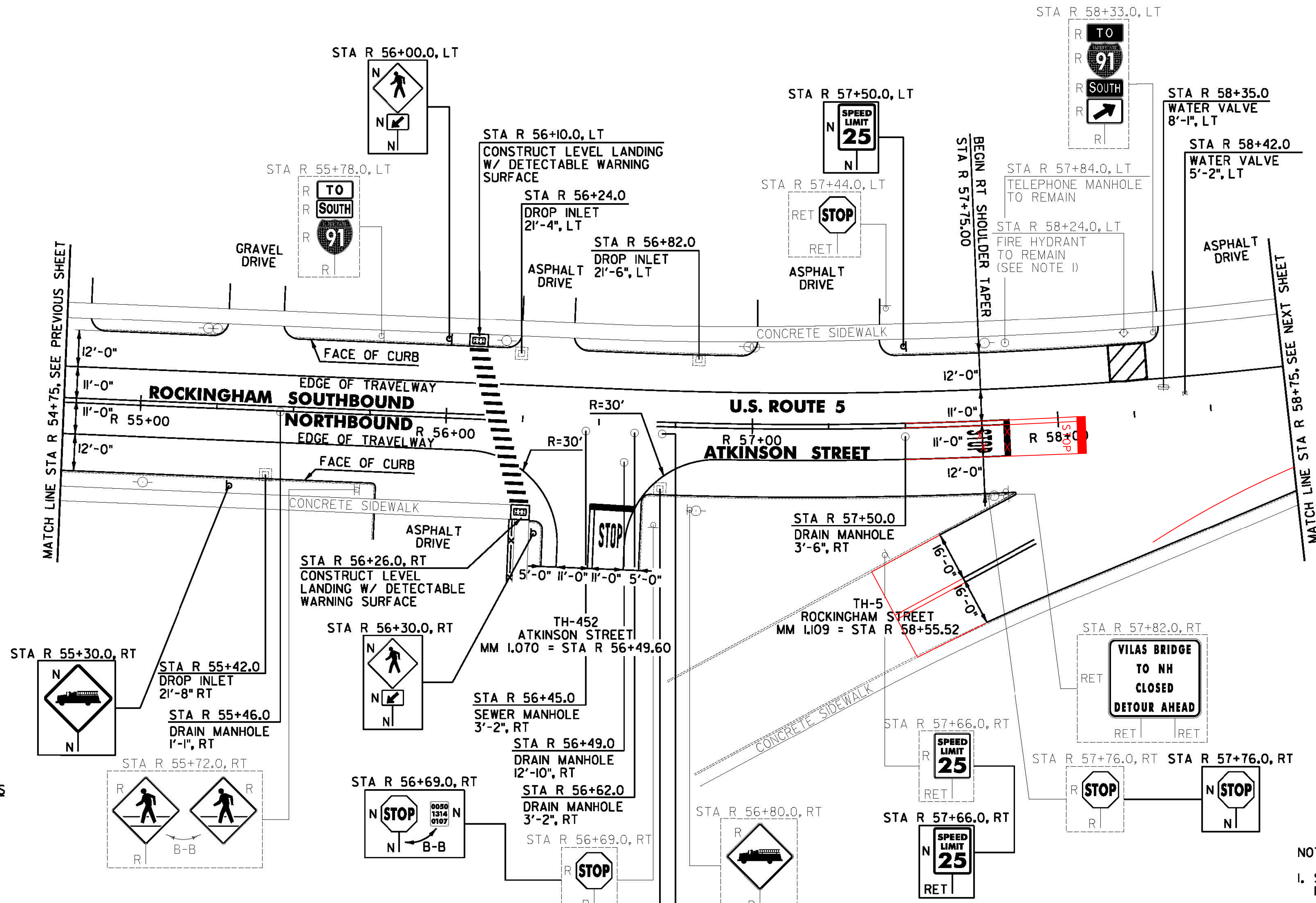
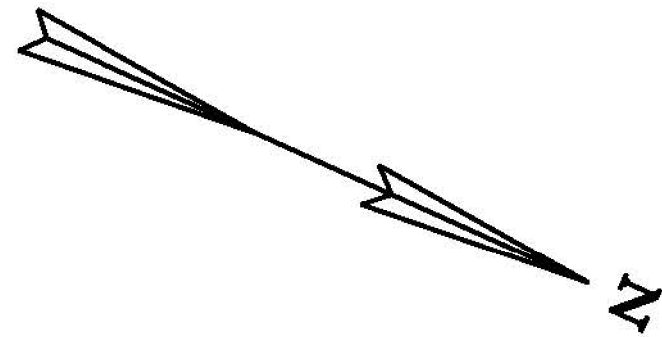
DURABLE 4 INCH WHITE LINE, TYPE A TAPE AND TEMPORARY 4 INCH WHITE LINE, PAINT
 (ALL LINES WILL INCLUDE EDGE LINE BREAKS AND RADIUS FOR TOWN HIGHWAYS)
 ROCKINGHAM:
 STA R 54+75.00 - STA R 58+75.00 EDGE LINE LT & RT
 STA R 56+49.60 EDGE LINES RT, TH-452
 STA R 58+24.00 - STA R 58+75.00 RT
DURABLE LETTER OR SYMBOL, TYPE D TAPE
 ROCKINGHAM:
 STA R 56+49.60 RT, TH-452 "S,T,O,P (4 EA)
 STA R 57+75.0 RT, "S,T,O,P (4 EA)

DURABLE 4 INCH YELLOW LINE, TYPE A TAPE AND TEMPORARY 4 INCH YELLOW LINE, PAINT
 (ALL LINES WILL INCLUDE C/L LINE BREAKS FOR TOWN HIGHWAYS)
 S = SOLID, D = DASHED
 ROCKINGHAM:
 STA R 54+75.00 - STA R 57+75.00
 STA R 56+49.60 DOUBLE SOLID RT, TH-452
 STA R 58+55.52 DOUBLE SOLID RT, TH-5

DURABLE 8 INCH WHITE LINE, TYPE A TAPE
 ROCKINGHAM:
 STA R 58+18.00 - STA R 58+30.00 LT, FIRE HYDRANT, NO PARKING
DURABLE 24 INCH STOP BAR, TYPE A TAPE AND TEMPORARY 24 INCH STOP BAR, PAINT
 ROCKINGHAM:
 STA R 56+49.60 RT, TH-452
 STA R 57+83.00 RT
 STA R 58+06.00 RT

DURABLE CROSSWALK MARKING, TYPE A TAPE AND TEMPORARY CROSSWALK MARKING, PAINT
 ROCKINGHAM:
 STA R 56+17.00 LT/RT
TEMPORARY LETTER OR SYMBOL, PAINT
 ROCKINGHAM:
 STA R 56+49.60 RT, TH-452 "S,T,O,P (8 EA)
 STA R 57+75.0 RT, "S,T,O,P (8 EA)
 57+98.0

REMOVING SIGNS
 AS SHOWN - 13



CHANGING ELEVATION OF SEWER MANHOLES
 ROCKINGHAM:
 STA R 56+45.0 RT

CHANGING ELEVATION OF DROP INLETS, CATCH BASINS, OR MANHOLES
 ROCKINGHAM:

- STA R 55+46.0 RT
- STA R 56+49.0 RT
- STA R 56+62.0 RT
- STA R 56+71.0 RT
- STA R 57+50.0 RT
- STA R 56+45.0 RT

REHAB, DROP INLETS, CATCH BASINS, OR MANHOLES, CLASS I, II OR III
 ROCKINGHAM:
 STA R 55+42.0 RT
 STA R 56+24.0 LT
 STA R 56+71.0 RT
 STA R 56+82.0 LT

PORTLAND CEMENT CONCRETE SIDEWALK, 5 INCH
 ROCKINGHAM:
 STA R 56+10.0 LT
 STA R 56+26.0 RT

DETECTABLE WARNING SURFACE
 ROCKINGHAM:
 STA R 56+10.0 LT
 STA R 56+26.0 RT

ADJUST ELEVATION OF VALVE BOX
 ROCKINGHAM:
 STA R 58+35.0 LT
 STA R 58+42.0 LT
 STA R 58+42.0 LT

SIGN LEGEND
 R = REMOVE
 S = SALVAGE
 N = NEW
 RET = RETAIN
 B-B = BACK TO BACK
 EXISTING = _____
 NEW = _____
 R = RETURN TO TOWN OF ROCKINGHAM

NOT TO SCALE
ROCKINGHAM PROJECT LAYOUT SHEET #15

PROJECT NAME: CHESTER-SPRINGFIELD-ROCKINGHAM-WINDSOR
PROJECT NUMBER: STP 2952(1)
FILE NAME: z13c518bdr_seg03.dgn
PROJECT LEADER: D. GOZALKOWSKI
DESIGNED BY: A. HAWKINS
PLOT DATE: 3/27/2015
DRAWN BY: A. KIRBY
CHECKED BY: J. SHIELDS
SHEET 193 OF 309

NOTE:
 1. SEE SHEET 16 FOR FIRE HYDRANT PAVEMENT MARKING DETAIL.