

**DURABLE 4 INCH WHITE LINE, TYPE A TAPE AND TEMPORARY 4 INCH WHITE LINE, PAINT**  
 (ALL LINES WILL INCLUDE EDGE LINE BREAKS AND RADIUS FOR TOWN HIGHWAYS)  
 ROCKINGHAM:  
 STA R 12+25.00 - STA R 15+50.00 EDGE LINE LT & RT  
 STA R 14+67.84 EDGE LINES LT, TH-5  
 STA R 14+83.68 SOLID LANE LINE RT, TH-5  
 STA R 14+83.68 EDGE LINES RT, TH-5  
 STA R 14+83.68 SIDEWALK DESIGNATION LINES RT, TH-5  
 STA R 14+83.68 SIDEWALK DESIGNATION LINES RT, TH-5

**DURABLE 8 INCH WHITE LINE, TYPE A TAPE**  
 ROCKINGHAM:  
 STA R 13+83.00 - STA R 14+70.00 HATCHED ISLAND, RT

**DURABLE 24 INCH STOP BAR, TYPE A TAPE AND TEMPORARY 24 INCH STOP BAR, PAINT**  
 ROCKINGHAM:  
 STA R 14+28.00 RT  
 STA R 14+67.84 LT, TH-5  
 STA R 14+83.68 RT, TH-5  
 STA R 15+29.00 LT

**DURABLE CROSSWALK MARKING, TYPE A TAPE AND TEMPORARY CROSSWALK MARKING, PAINT**  
 ROCKINGHAM:  
 STA R 14+83.68 RT, TH-5  
 STA R 15+09.00 LT/RT

**DURABLE 4 INCH YELLOW LINE, TYPE A TAPE AND TEMPORARY 4 INCH YELLOW LINE, PAINT**  
 (ALL LINES WILL INCLUDE C/L LINE BREAKS FOR TOWN HIGHWAYS)  
 S = SOLID, D = DASHED  
 ROCKINGHAM:  
 STA R 12+25.00 - STA R 15+50.00 LT & RT  
 STA R 14+01.00 - STA R 14+86.00 HATCHED ISLAND EDGE LINE RT  
 STA R 14+67.84 DOUBLE SOLID LT, TH-5  
 STA R 14+83.68 DOUBLE SOLID RT, TH-5

**DURABLE LETTER OR SYMBOL, TYPE D TAPE**  
 ROCKINGHAM:  
 STA R 14+82.00 RT, YIELD LINE (5 EA)  
 STA R 14+83.68 RT, TH-5 ARROW (1 EA)  
 STA R 14+83.68 RT, TH-5 ARROW (1 EA)  
 STA R 14+83.68 RT, TH-5 "O,N,L,Y" (4 EA)  
 STA R 14+83.68 RT, TH-5 ARROW (2 EA)  
 STA R 14+83.68 RT, TH-5 ARROW (2 EA)  
 STA R 14+83.68 RT, TH-5 ARROW (2 EA)  
 STA R 14+83.68 RT, TH-5 ARROW (2 EA)

**TEMPORARY LETTER OR SYMBOL, PAINT**  
 ROCKINGHAM:  
 STA R 14+82.00 RT, YIELD LINE (10 EA)  
 STA R 14+83.68 RT, TH-5 ARROW (2 EA)  
 STA R 14+83.68 RT, TH-5 ARROW (2 EA)  
 STA R 14+83.68 RT, TH-5 ARROW (4 EA)  
 STA R 14+83.68 RT, TH-5 ARROW (4 EA)  
 STA R 14+83.68 RT, TH-5 ARROW (4 EA)  
 STA R 14+83.68 RT, TH-5 ARROW (4 EA)

**CHANGING ELEVATION OF DROP INLETS, CATCH BASINS, OR MANHOLES**  
 ROCKINGHAM:  
 STA R 14+54.0 RT  
 STA R 14+75.0 RT  
 STA R 14+90.0 RT  
 STA R 15+22.0 RT  
 STA R 15+27.0 C/L

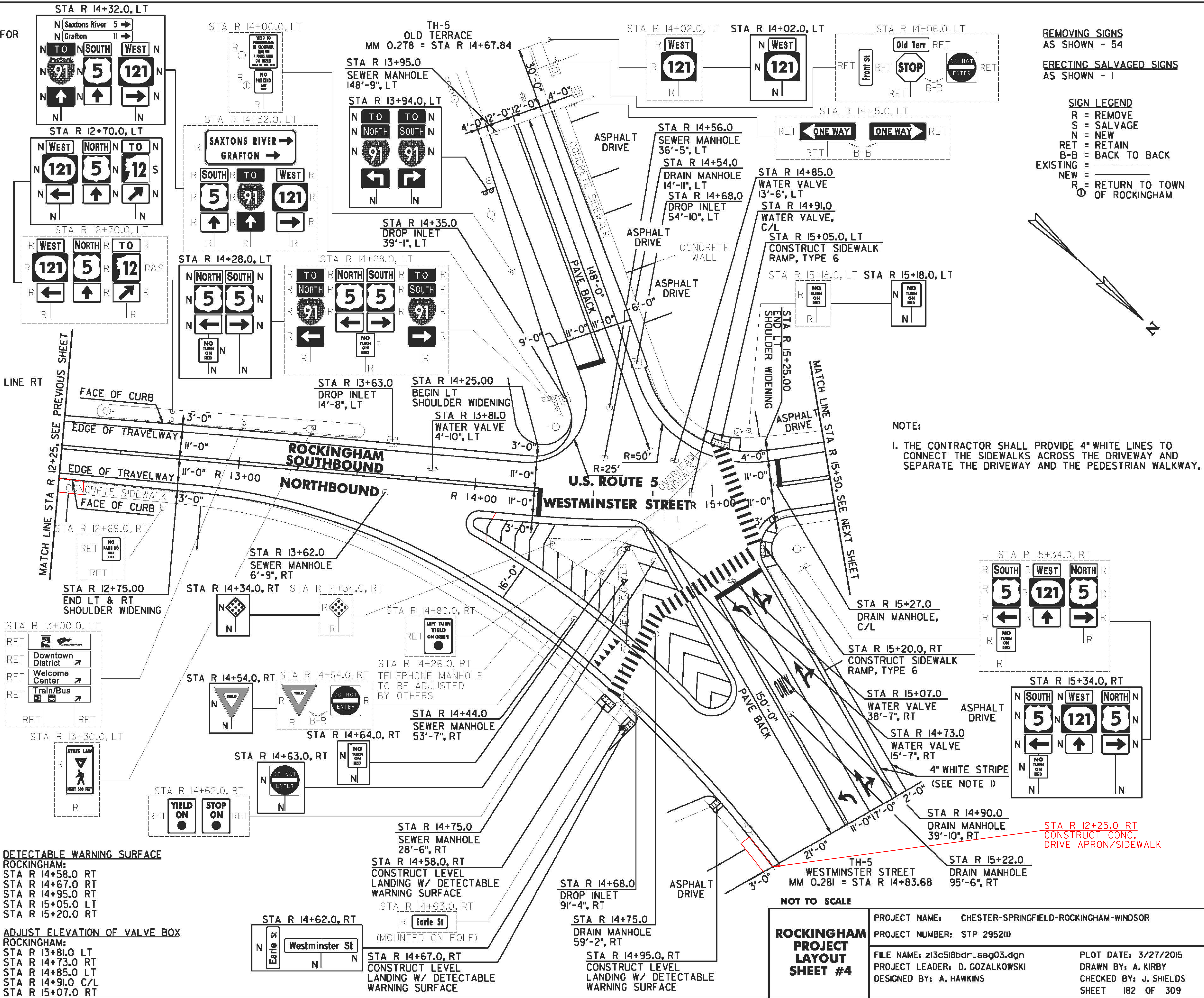
**REHAB. DROP INLETS, CATCH BASINS, OR MANHOLES, CLASS I, II OR III**  
 ROCKINGHAM:  
 STA R 13+63.0 LT  
 STA R 14+35.0 LT  
 STA R 14+68.0 RT  
 STA R 14+68.0 LT

**CHANGING ELEVATION OF SEWER MANHOLES**  
 ROCKINGHAM:  
 STA R 13+62.0 RT  
 STA R 13+95.0 LT  
 STA R 14+44.0 RT  
 STA R 14+56.0 LT  
 STA R 14+75.0 RT

**PORTLAND CEMENT CONCRETE SIDEWALK, 5 INCH**  
 ROCKINGHAM:  
 STA R 14+58.0 RT STA R 15+25.0 RT  
 STA R 14+67.0 RT  
 STA R 14+95.0 RT  
 STA R 15+05.0 LT  
 STA R 15+20.0 RT

**CAST-IN-PLACE CONCRETE CURB, TYPE B**  
 ROCKINGHAM:  
 STA R 15+05.0, LT

**REMOVING AND RESETTING CURB**  
 ROCKINGHAM:  
 STA R 15+20.0, RT



**REMOVING SIGNS**  
 AS SHOWN - 54

**ERECTING SALVAGED SIGNS**  
 AS SHOWN - 1

**SIGN LEGEND**  
 R = REMOVE  
 S = SALVAGE  
 N = NEW  
 RET = RETAIN  
 B-B = BACK TO BACK  
 EXISTING =   
 NEW =   
 R = RETURN TO TOWN OF ROCKINGHAM

**NOTE:**  
 1. THE CONTRACTOR SHALL PROVIDE 4" WHITE LINES TO CONNECT THE SIDEWALKS ACROSS THE DRIVEWAY AND SEPARATE THE DRIVEWAY AND THE PEDESTRIAN WALKWAY.

**NOT TO SCALE**

**ROCKINGHAM PROJECT LAYOUT SHEET #4**

PROJECT NAME: CHESTER-SPRINGFIELD-ROCKINGHAM-WINDSOR	PLOT DATE: 3/27/2015
PROJECT NUMBER: STP 2952(1)	DRAWN BY: A. KIRBY
FILE NAME: z13c518bdr_seg03.dgn	CHECKED BY: J. SHIELDS
DESIGNED BY: A. HAWKINS	SHEET 182 OF 309