

**DURABLE 4 INCH WHITE LINE, TYPE A TAPE AND TEMPORARY 4 INCH WHITE LINE, PAINT**

(ALL LINES WILL INCLUDE EDGE LINE BREAKS AND RADIUS FOR TOWN HIGHWAYS)

SPRINGFIELD:

- STA S 251+20.00 - STA S 254+50.00 EDGE LINE RT
- STA S 250+50.00 - STA S 250+56.00 LT, PARKING SPACES
- STA S 250+50.00 - STA S 251+01.00 RT, PARKING SPACES
- STA S 251+22.00 - STA S 252+07.00 LT, PARKING SPACES
- STA S 253+22.00 - STA S 254+22.00 LT, PARKING SPACES

**DURABLE 4 INCH YELLOW LINE, TYPE A TAPE AND TEMPORARY 4 INCH YELLOW LINE, PAINT**

(ALL LINES WILL INCLUDE C/L LINE BREAKS FOR TOWN HIGHWAYS)

S = SOLID, D = DASHED

SPRINGFIELD: LT C RT

STA S 250+50.00 - STA S 254+50.00 S - S

**DURABLE CROSSWALK MARKING, TYPE A TAPE AND TEMPORARY CROSSWALK MARKING, PAINT**

SPRINGFIELD:

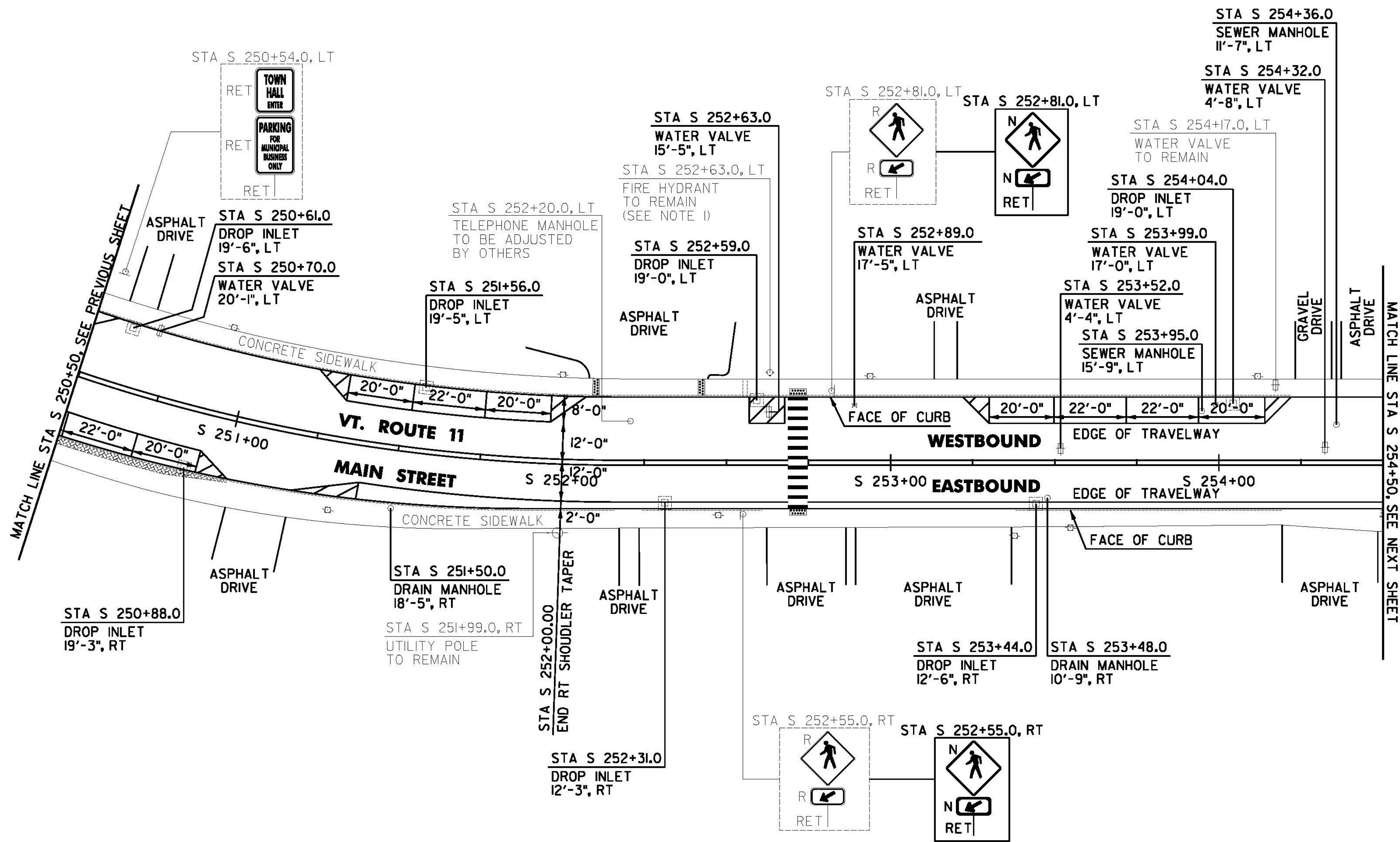
STA S 252+72.00 LT/RT

**DURABLE 8 INCH WHITE LINE, TYPE A TAPE**

SPRINGFIELD:

- STA S 250+50.00 - STA S 250+56.00 LT, NO PARKING
- STA S 250+92.00 - STA S 251+01.00 RT, NO PARKING
- STA S 251+20.00 - STA S 251+40.00 RT, NO PARKING
- STA S 251+22.00 - STA S 251+32.00 LT, NO PARKING
- STA S 251+96.00 - STA S 252+07.00 LT, NO PARKING
- STA S 252+57.00 - STA S 252+69.00 LT, FIRE HYDRANT, NO PARKING
- STA S 253+22.00 - STA S 253+30.00 LT, NO PARKING
- STA S 254+14.00 - STA S 254+22.00 LT, NO PARKING

**REMOVING SIGNS AS SHOWN - 4**



**CHANGING ELEVATION OF DROP INLETS, CATCH BASINS, OR MANHOLES**

SPRINGFIELD:

- STA S 251+50.0 RT
- STA S 253+48.0 RT

**REHAB. DROP INLETS, CATCH BASINS, OR MANHOLES, CLASS I, II, OR III**

SPRINGFIELD:

- STA S 250+61.0 LT
- STA S 250+88.0 RT
- STA S 251+56.0 LT
- STA S 252+31.0 RT
- STA S 252+59.0 LT
- STA S 253+44.0 RT
- STA S 254+04.0 LT

**CHANGING ELEVATION OF SEWER MANHOLES**

SPRINGFIELD:

- STA S 253+95.0 LT
- STA S 254+36.0 LT

**ADJUST ELEVATION OF VALVE BOX**

SPRINGFIELD:

- STA S 250+70.0 LT
- STA S 252+63.0 LT
- STA S 252+89.0 LT
- STA S 253+52.0 LT
- STA S 253+99.0 LT
- STA S 254+32.0 LT

NOTE:

1. SEE SHEET 16 FOR FIRE HYDRANT PAVEMENT MARKING DETAIL.

**SIGN LEGEND**

- R = REMOVE
- S = SALVAGE
- N = NEW
- RET = RETAIN
- B-B = BACK TO BACK
- EXISTING = \_\_\_\_\_
- NEW = \_\_\_\_\_
- R = RETURN TO TOWN OF SPRINGFIELD

**NOT TO SCALE**

**SPRINGFIELD PROJECT LAYOUT SHEET #14**

PROJECT NAME: CHESTER-SPRINGFIELD-ROCKINGHAM-WINDSOR

PROJECT NUMBER: STP 29520

FILE NAME: z13c518bdr\_seg02.dgn

PROJECT LEADER: D. GOZALKOWSKI

DESIGNED BY: A. HAWKINS

PLOT DATE: 3/27/2015

DRAWN BY: A. KIRBY

CHECKED BY: J. SHIELDS

SHEET 121 OF 309